



Dealers Industrial Equipment

No.:

Date: 29-SEP-2016

Customer :

TECHNICAL PROPOSAL

Three-phase induction motor - Squirrel cage rotor

Product line : ODP – Open Induction Motors – NEMA Premium Efficiency

Catalog Number : 30036OT3G445TS

List Price : \$22,294

Notes:

Downloaded from <http://dealerselectric.com>

Generated for Model #30036OT3G445TS

Performed by:

Checked:



Dealers Industrial Equipment

No.:

Date: 29-SEP-2016

DATA SHEET Three-phase induction motor - Squirrel cage rotor

Customer :
 Product line : ODP – Open Induction Motors – NEMA Premium Efficiency

Frame : 445TS
 Output : 300 HP
 Frequency : 60 Hz
 Poles : 2
 Full load speed : 3565 rpm
 Slip : 0.97 %
 Voltage : 460 V
 Rated current : 322 A
 Locked rotor current : 2030 A
 Locked rotor current (I_L/I_n) : 6.3
 No-load current : 81.0 A
 Full load torque : 436 lb.ft
 Locked rotor torque : 200 %
 Breakdown torque : 260 %
 Design : B
 Insulation class : F
 Temperature rise : 80 K
 Locked rotor time : 16 s (hot)
 Service factor : 1.15
 Duty cycle : S1
 Ambient temperature : -20°C - +40°C
 Altitude : 1000 m
 Degree of Protection : IP23
 Approximate weight : 2007 lb
 Moment of inertia : 33.508 sq.ft.lb
 Noise level : 89 dB(A)

	D.E.	N.D.E.
Bearings	6314 C3	6314 C3
Regreasing interval	14418 h	14418 h
Grease amount	27 g	27 g

Load	Power factor	Efficiency (%)
100%	0.90	95.4
75%	0.89	95.4
50%	0.84	94.5

Notes:
 Downloaded from <http://dealerselectric.com>
 Generated for Model #30036OT3G445TS

Performed by

Checked



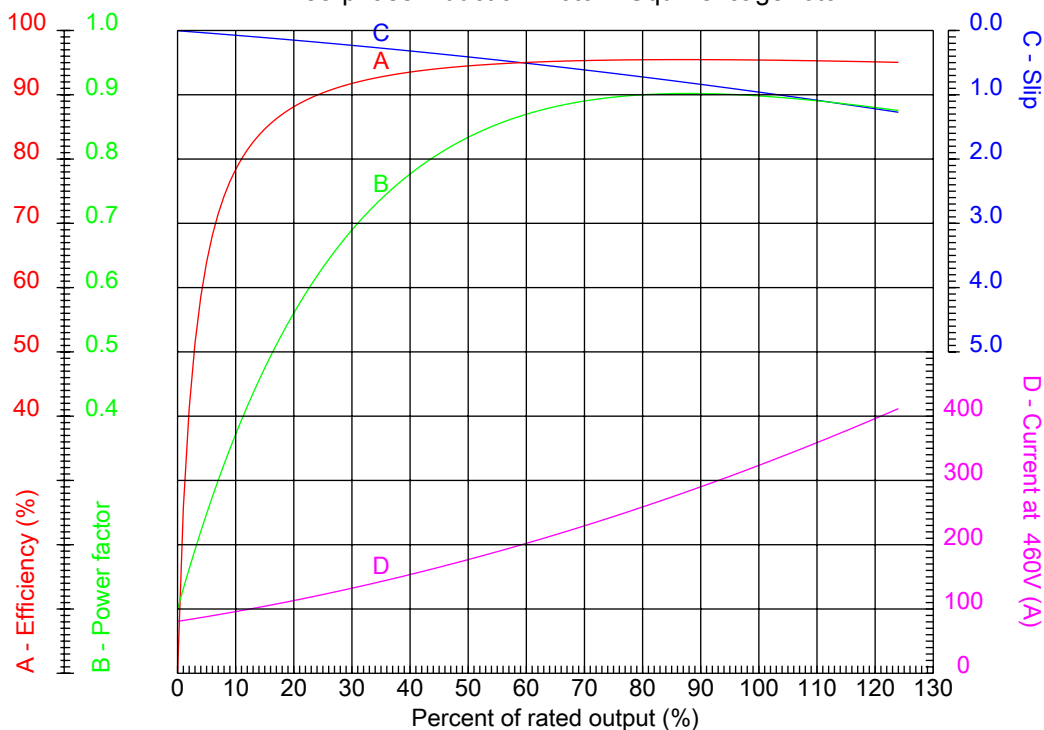
Dealers Industrial Equipment

No.:

Date: 29-SEP-2016

PERFORMANCE CURVES RELATED TO RATED OUTPUT

Three-phase induction motor - Squirrel cage rotor



Customer :
Product line : ODP – Open Induction Motors – NEMA Premium Efficiency

Frame	: 445TS	Locked rotor current (I _L /I _n)	: 6.3
Output	: 300 HP	Duty cycle	: S1
Frequency	: 60 Hz	Service factor	: 1.15
Full load speed	: 3565 rpm	Design	: B
Voltage	: 460 V	Locked rotor torque	: 200 %
Rated current	: 322 A	Breakdown torque	: 260 %
Insulation class	: F		

Notes:
Downloaded from <http://dealerselectric.com>
Generated for Model #30036OT3G445TS

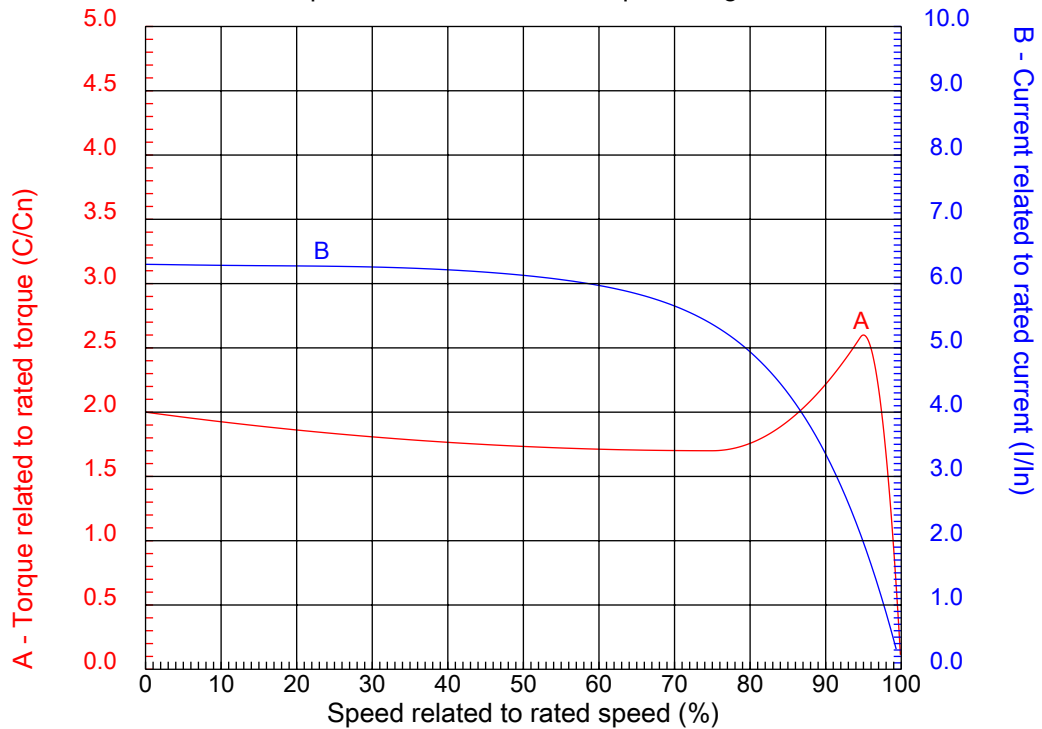
Performed by

Checked



CHARACTERISTIC CURVES RELATED TO SPEED

Three-phase induction motor - Squirrel cage rotor



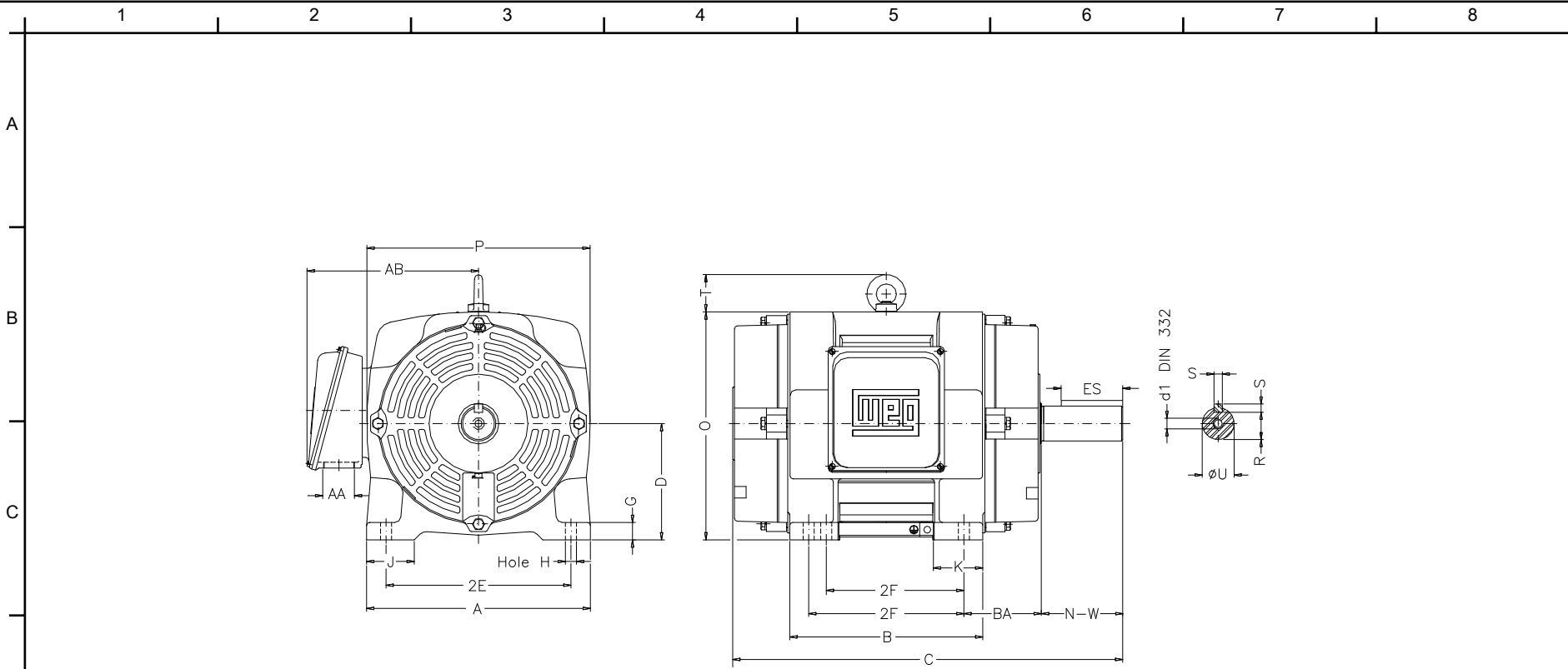
Customer :
Product line : ODP – Open Induction Motors – NEMA Premium Efficiency

Frame	: 445TS	Locked rotor current (I _l /I _n)	: 6.3
Output	: 300 HP	Duty cycle	: S1
Frequency	: 60 Hz	Service factor	: 1.15
Full load speed	: 3565 rpm	Design	: B
Voltage	: 460 V	Locked rotor torque	: 200 %
Rated current	: 322 A	Breakdown torque	: 260 %
Insulation class	: F		

Notes:
Downloaded from <http://dealerselectric.com>
Generated for Model #30036OT3G445TS

Performed by

Checked



Notes: Downloaded from <http://dealerselectric.com>
 Generated for Model #30036OT3G445TS

Performed by:

Checked:

Customer:

ODP – Open Induction Motors – NEMA Premium Efficiency

2E 18.000	J 3.937	A 21.929	P 22.125	AB 20.236
2F 14.500/16.500	K 5.590	B 20.078	BA 7.500	U 2.375
d1 DUNC 3/4"-10	N-W 4.750	ES 3.000	S 0.625	R 2.021
depth 0.625	D 11.000	G 1.811	O 22.440	T 3.544
H 0.807	C 36.062	AA 2xNPT 3"		

Three-phase induction motor
 Frame 445TS - IP23

29-SEP-2016



1 2 3 4 5 6 7 8

A

PART-WINDING

WYE-DELTA

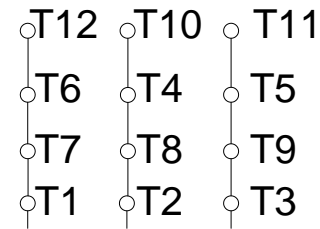
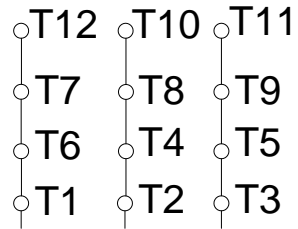
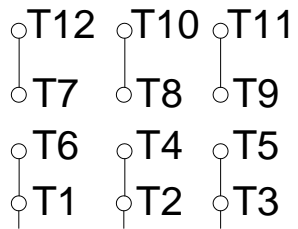
START

RUN

START

RUN

B



C

L1 L2 L3

L1 L2 L3

L1 L2 L3

L1 L2 L3

D

E

F

Notes: Downloaded from <http://dealerselectric.com>
Generated for Model #30036OT3G445TS

Performed by:

Checked:

Customer:

ODP – Open Induction Motors – NEMA Premium Efficiency

Three-phase induction motor
Frame 445TS - IP23

29-SEP-2016

