



Dealers Industrial Equipment

No.:

Date: 28-SEP-2016

Customer :

TECHNICAL PROPOSAL

Three-phase induction motor - Squirrel cage rotor

Product line : Three-Phase : Explosion Proof - High Efficiency

Catalog Number : 25036XP3G505S

List Price : \$25,936

Notes:

Downloaded from <http://dealerselectric.com>

Generated for Model #25036XP3G505S

Performed by:

Checked:



Dealers Industrial Equipment

No.:

Date: 28-SEP-2016

DATA SHEET Three-phase induction motor - Squirrel cage rotor

Customer :
 Product line : Three-Phase : Explosion Proof - High Efficiency

Frame : 505TS
 Output : 250 HP
 Frequency : 60 Hz
 Poles : 2
 Full load speed : 3570 rpm
 Slip : 0.83 %
 Voltage : 460 V
 Rated current : 267 A
 Locked rotor current : 1760 A
 Locked rotor current (I_L/I_n) : 6.6
 No-load current : 50.0 A
 Full load torque : 363 lb.ft
 Locked rotor torque : 200 %
 Breakdown torque : 250 %
 Design : B
 Insulation class : F
 Temperature rise : 80 K
 Locked rotor time : 34 s (hot)
 Service factor : 1.15
 Duty cycle : S1
 Ambient temperature : -20°C - +40°C
 Altitude : 1000 m
 Degree of Protection : IP54
 Approximate weight : 2542 lb
 Moment of inertia : 51.379 sq.ft.lb
 Noise level : 88 dB(A)

	D.E.	N.D.E.
Bearings	6316 C3	6316 C3
Regreasing interval	2701 h	2701 h
Grease amount	34 g	34 g

Load	Power factor	Efficiency (%)
100%	0.91	95.4
75%	0.90	95.4
50%	0.88	93.6

Notes:
 Downloaded from <http://dealerselectric.com>
 Generated for Model #25036XP3G505S

Performed by

Checked



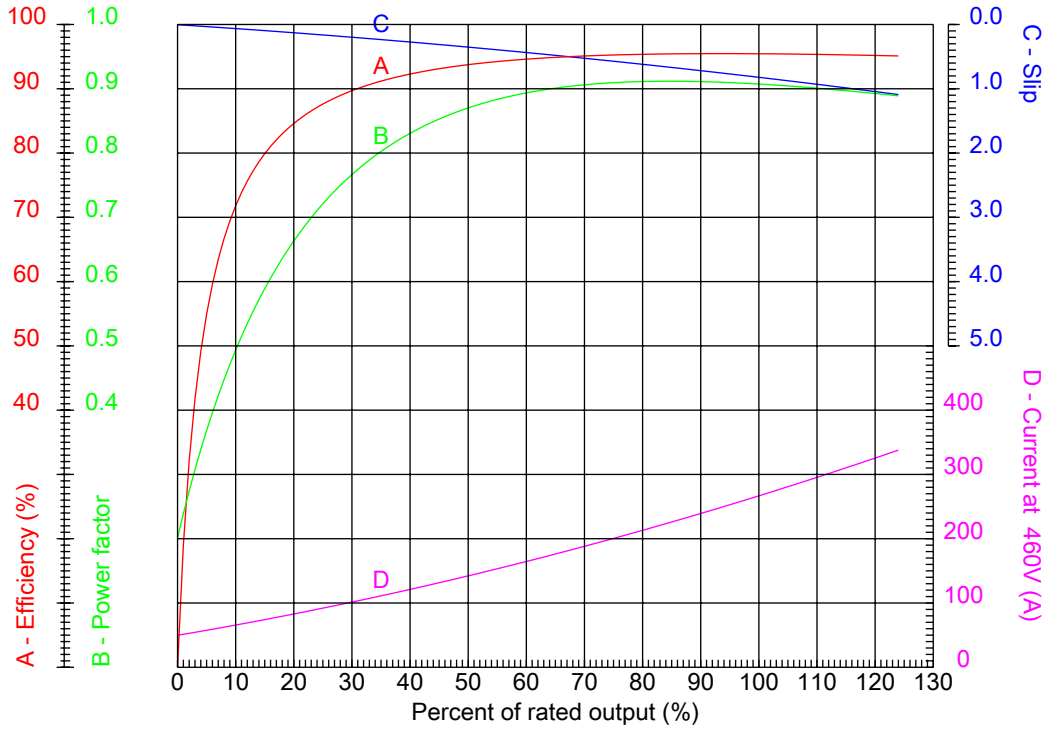
Dealers Industrial Equipment

No.:

Date: 28-SEP-2016

PERFORMANCE CURVES RELATED TO RATED OUTPUT

Three-phase induction motor - Squirrel cage rotor



Customer :
 Product line : Three-Phase : Explosion Proof - High Efficiency

Frame	: 505TS	Locked rotor current (I _l /I _n)	: 6.6
Output	: 250 HP	Duty cycle	: S1
Frequency	: 60 Hz	Service factor	: 1.15
Full load speed	: 3570 rpm	Design	: B
Voltage	: 460 V	Locked rotor torque	: 200 %
Rated current	: 267 A	Breakdown torque	: 250 %
Insulation class	: F		

Notes:
 Downloaded from <http://dealerselectric.com>
 Generated for Model #25036XP3G505S

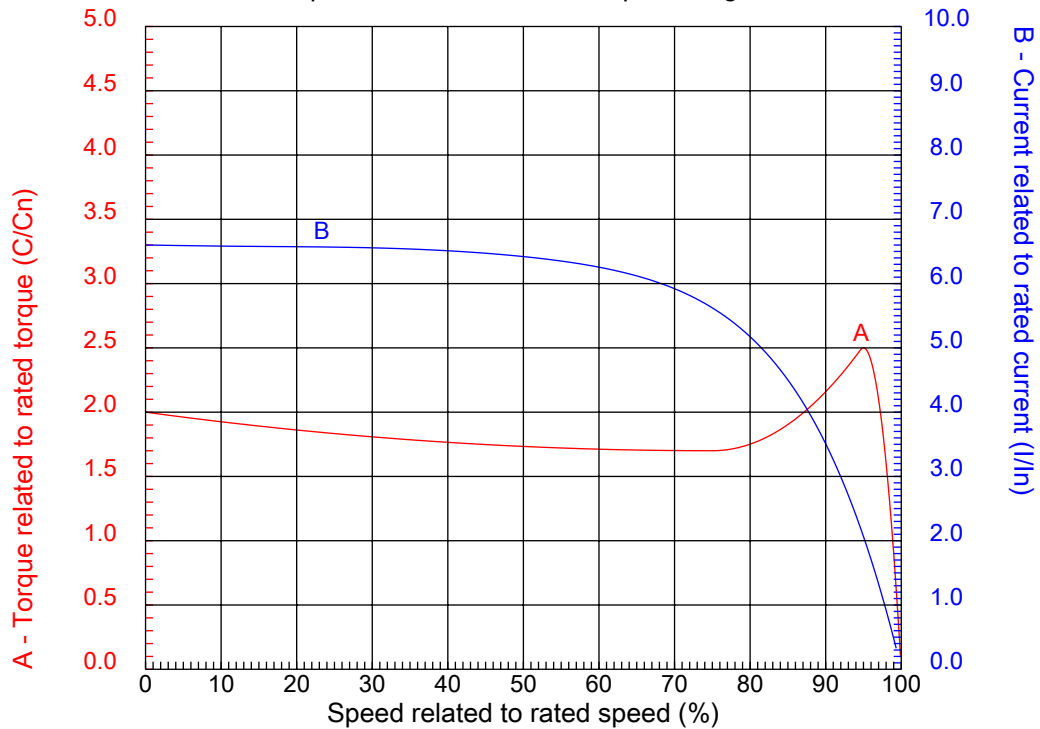
Performed by

Checked



CHARACTERISTIC CURVES RELATED TO SPEED

Three-phase induction motor - Squirrel cage rotor



Customer :
Product line : Three-Phase : Explosion Proof - High Efficiency

Frame	: 505TS	Locked rotor current (I _l /I _n)	: 6.6
Output	: 250 HP	Duty cycle	: S1
Frequency	: 60 Hz	Service factor	: 1.15
Full load speed	: 3570 rpm	Design	: B
Voltage	: 460 V	Locked rotor torque	: 200 %
Rated current	: 267 A	Breakdown torque	: 250 %
Insulation class	: F		

Notes:
Downloaded from <http://dealerselectric.com>
Generated for Model #25036XP3G505S

Performed by

Checked

1 2 3 4 5 6 7 8

A

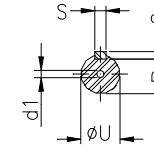
B

C

D

E

F



Notes: Downloaded from <http://dealerselectric.com>
Generated for Model #25036XP3G505S

Performed by:

Checked:

Customer:

Three-Phase : Explosion Proof - High Efficiency

Three-phase induction motor
Frame 505TS - IP54

28-SEP-2016



2E 20.000	A 24.724	2F 16.000/18.000	B 21.969	BA 8.500
J 4.724	K 5.984	P 24.212	ES 3.000	depth 0.625
S 0.625	N-W 4.750	U 2.375	R 2.021	AB 21.850
D 12.500	G 2.146	O 25.197	H 1.250	C 46.875
AA 2xNPT 3"	d1 DUNC 3/4"-10	d2 DUNC 3/4"-10	T 3.543	

1 2 3 4 5 6 7 8

A

PART-WINDING

WYE-DELTA

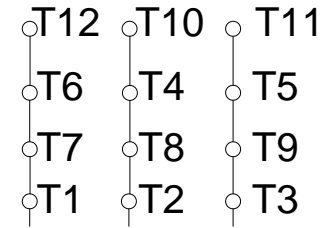
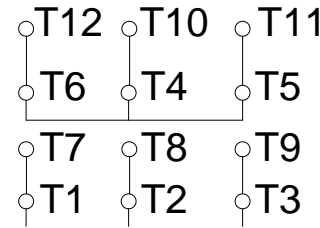
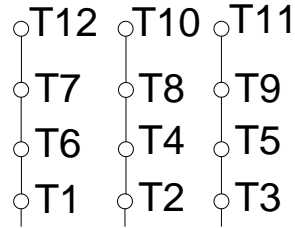
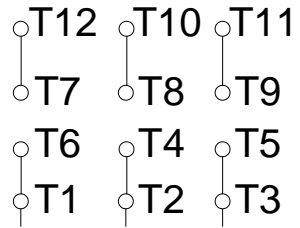
START

RUN

START

RUN

B



C

L1 L2 L3

L1 L2 L3

L1 L2 L3

L1 L2 L3

D

E

F

Notes: Downloaded from <http://dealerselectric.com>
 Generated for Model #25036XP3G505S

Performed by:

Checked:

Customer:

Three-Phase : Explosion Proof - High Efficiency

Three-phase induction motor
 Frame 505TS - IP54

28-SEP-2016

