



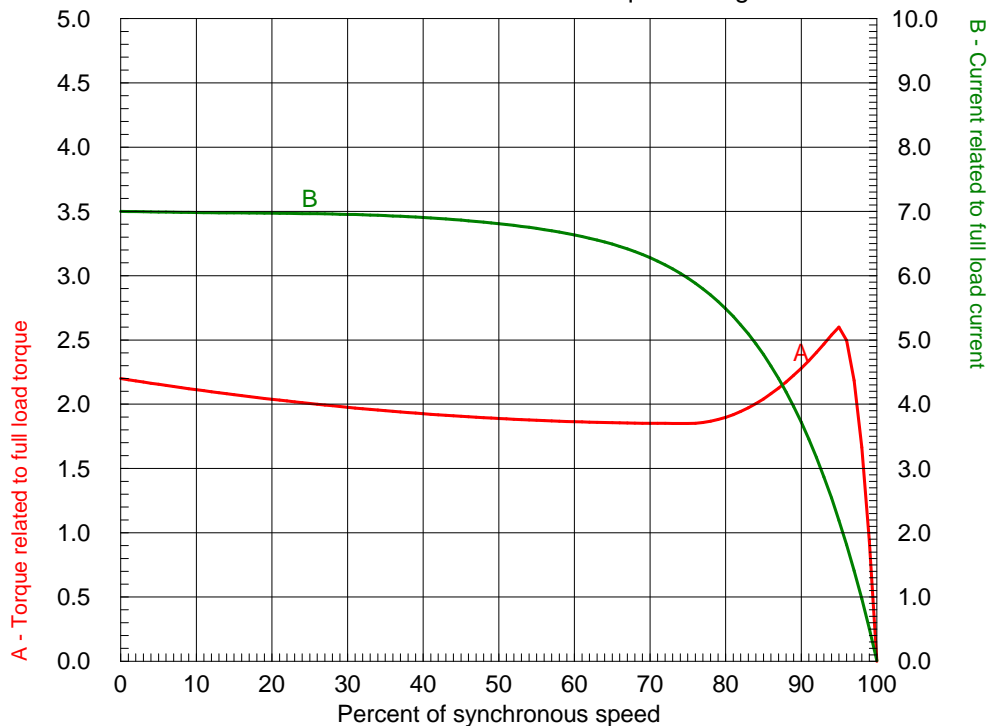


# Curves

Nr.: 012072/2016

Date: 12-MAR-2016

## TORQUE AND CURRENT X SPEED CURVE Three Phase Induction Motor - Squirrel Cage



Customer : WEG ELECTRIC CORPORATION - WEC  
Product code :  
Product line : Special Motor

Output	: 200 HP (150 kW)	Duty cycle	: Cont.(S1)
Frame	: 504/5TZ	Service factor	: 1.15
Rated speed	: 1191 rpm	Design	: A
Frequency	: 60 Hz	Enclosure	: IP55 (TEFC)
Rated voltage	: 460 V	Locked rotor torque	: 220 %
Insulation class	: F	Pull up torque	: 185 %
Rated current	: 244 A	Breakdown torque	: 260 %
LRC (p.u.)	: 7.0 Code H		

Notes:  
W22 Crusher Duty - NEMA Premium Efficiency

The figures given herewith are regarded as average values based on actual tests and applied to sinusoidal power supplied motors, within permissible tolerances under NEMA MG 1-12.

Performed by  
marcioa

Checked  
AUTOMATICO

Revision  
Nr.: 0 Date: 12-MAR-2016

Approved

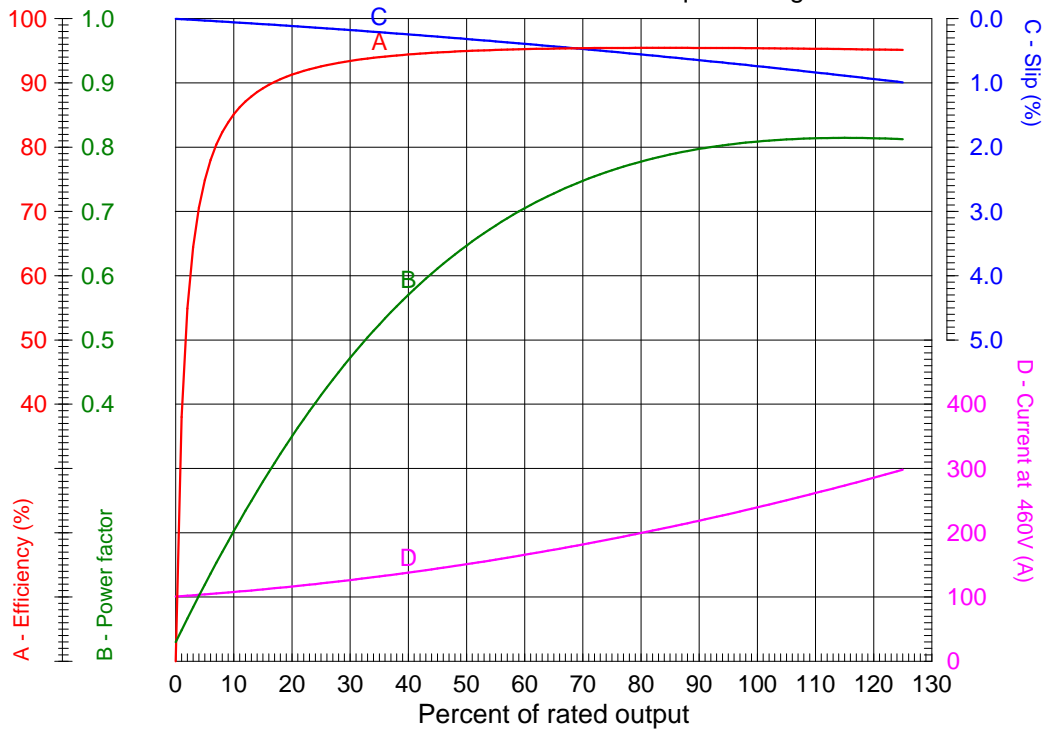


# Curves

Nr.: 012072/2016

Date: 12-MAR-2016

## LOAD PERFORMANCE CURVE Three Phase Induction Motor - Squirrel Cage



Customer : WEG ELECTRIC CORPORATION - WEC  
 Product code :  
 Product line : Special Motor

Output : 200 HP (150 kW)	Duty cycle : Cont.(S1)
Frame : 504/5TZ	Service factor : 1.15
Rated speed : 1191 rpm	Design : A
Frequency : 60 Hz	Enclosure : IP55 (TEFC)
Rated voltage : 460 V	Locked rotor torque : 220 %
Insulation class : F	Pull up torque : 185 %
Rated current : 244 A	Breakdown torque : 260 %
LRC (p.u.) : 7.0 Code H	

Notes:  
W22 Crusher Duty - NEMA Premium Efficiency

The figures given herewith are regarded as average values based on actual tests and applied to sinusoidal power supplied motors, within permissible tolerances under NEMA MG 1-12.

Performed by  
marcioa

Checked  
AUTOMATICO

Revision  
Nr.: 0 Date: 12-MAR-2016

Approved

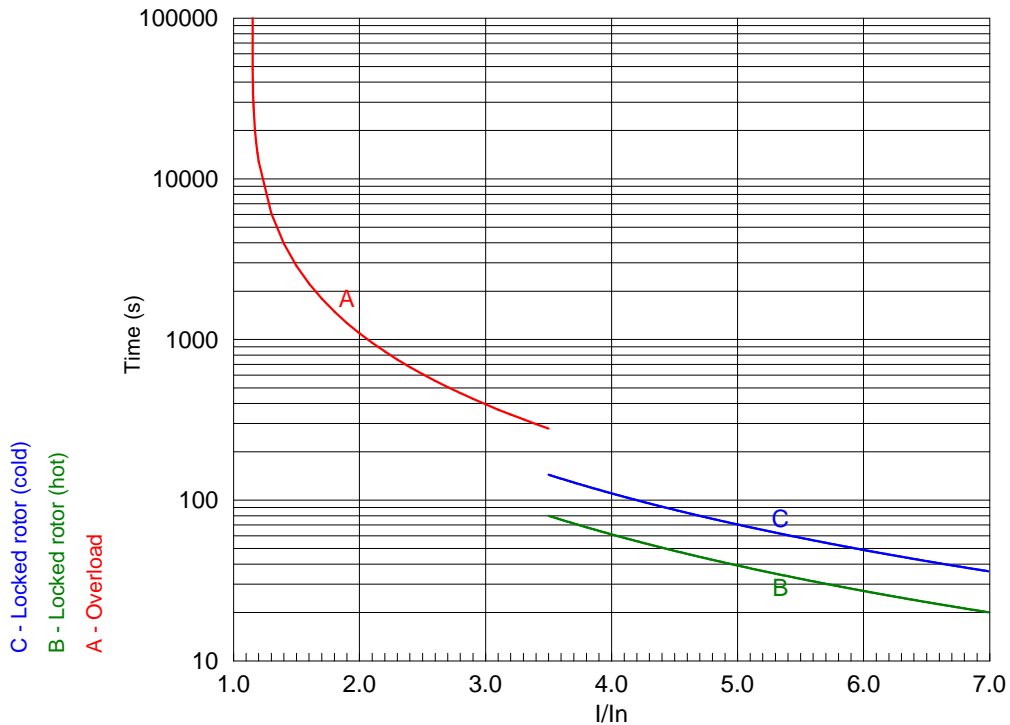


# Curves

Nr.: 012072/2016

Date: 12-MAR-2016

## THERMAL LIMIT CURVE Three Phase Induction Motor - Squirrel Cage



Customer : WEG ELECTRIC CORPORATION - WEC  
Product code :  
Product line : Special Motor

Output	: 200 HP (150 kW)	Duty cycle	: Cont.(S1)
Frame	: 504/5TZ	Service factor	: 1.15
Rated speed	: 1191 rpm	Design	: A
Frequency	: 60 Hz	Enclosure	: IP55 (TEFC)
Rated voltage	: 460 V	Locked rotor torque	: 220 %
Insulation class	: F	Pull up torque	: 185 %
Rated current	: 244 A	Breakdown torque	: 260 %
LRC (p.u.)	: 7.0 Code H		

Notes:  
W22 Crusher Duty - NEMA Premium Efficiency

The figures given herewith are regarded as average values based on actual tests and applied to sinusoidal power supplied motors, within permissible tolerances under NEMA MG 1-12.

Performed by  
marcioa

Checked  
AUTOMATICO

Revision  
Nr.: 0 Date: 12-MAR-2016

Approved

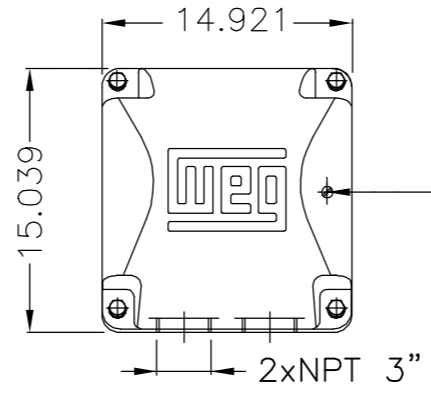
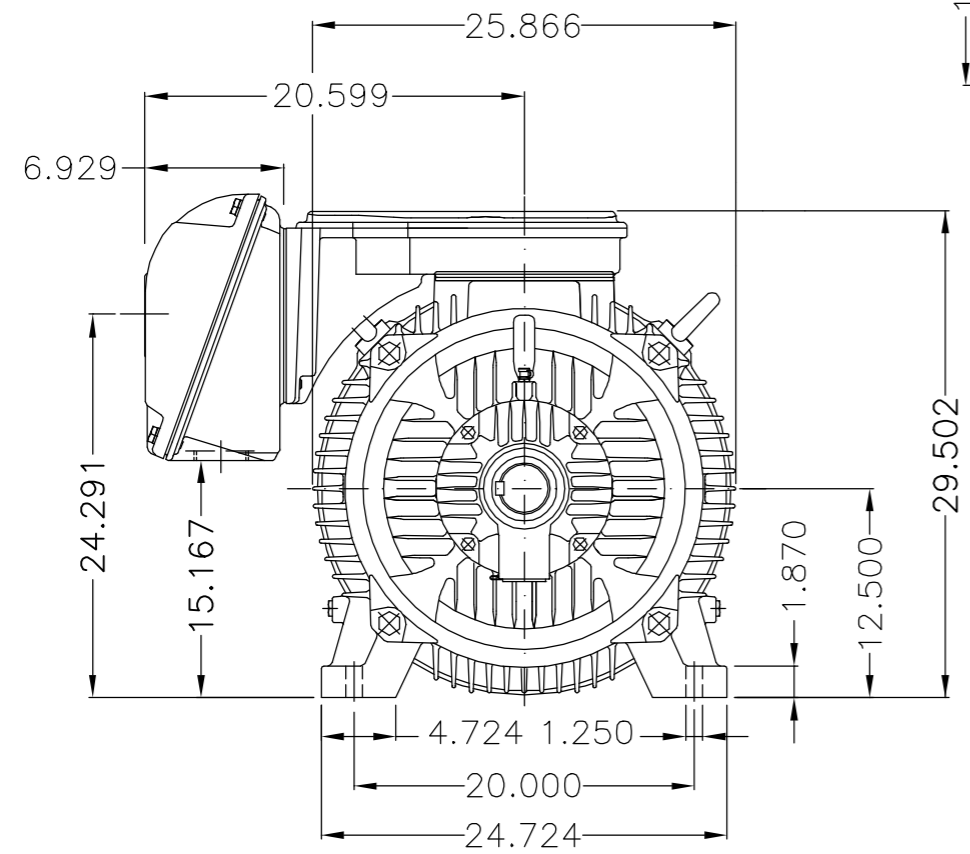
EIXO/SHAFT	
PADRÃO/STANDARD	
OPCIONAL/OPTIONAL	
ESPECIAL/SPECIAL	X

Dimensões em polegada  
Dimensions in inches

**CERTIFIED WEG MOTORES**  
Certified document.  
Not subject to changes.

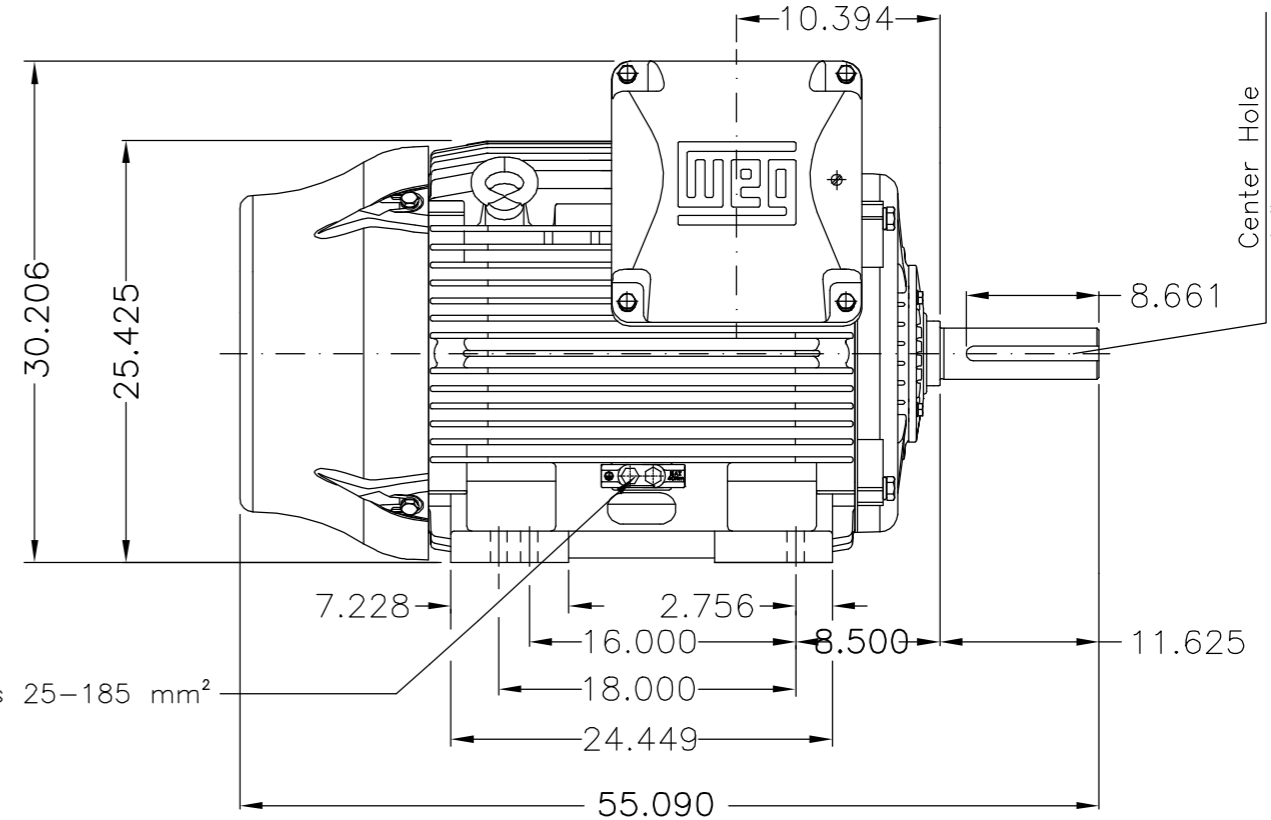
THIS IS AN UPDATED REVISION, THE PREVIOUS ONE MUST BE DISREGARDED.

A  
B  
C  
D  
E

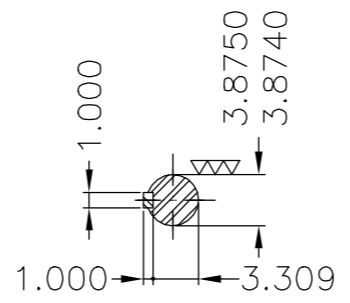


Main terminal box

Grounding for leads 35-70 mm<sup>2</sup>



Grounding for leads 25-185 mm<sup>2</sup>



DE Shaft End

Tampa dianteira especial / Special DE endshield
Rolamento dianteiro de rolos NU-322 C3 / NU-322 C3 DE roller bearing
Dispositivo de travamento de eixo / Shaft locking device
Vedação - labirinto Taconite / Sealing - Taconite labyrinth
Ventilador de Alumínio / Aluminum fan
Categoria A / Design A
Tampa traseira com mancal eletricamente isolado / N.D.E bearing hub electrically insulated
Cor RAL 5009 / Color RAL 5009
Plano de pintura 203A / Painting plan 203A
Forma construtiva NEMA F-1 / Mounting NEMA F-1
Forma construtiva B3D / Mounting B3R(D)

**WEG ELECTRIC CORPORATION - WEC**

500001130675	DOCUMENTO NOVO	DVEGINI	NSCHMIDT	22.01.2016	00		
ECM	LOC	SUMMARY OF MODIFICATIONS	EXECUTED	CHECKED	RELEASED	DATE	VER
EXECUTED	DVEGINI	THREE PHASE W22 MOTOR - NEMA PREMIUM EFF					
CHECKED		FRAME 504/5TZ IP55					
RELEASED	NSCHMIDT						
REL DT	22.01.2016	WMO	Jaraguá do Sul	Product Engineering	SHEET	1 / 1	

200 HP 06 Poles 60Hz 414149562/0 MEC

A



UNCONTROLLED COPY

RELEASED

ZME A3

1 2 3 4 5 6 7 8

A

### PART-WINDING

### WYE-DELTA

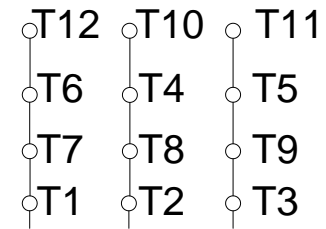
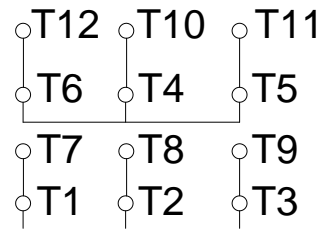
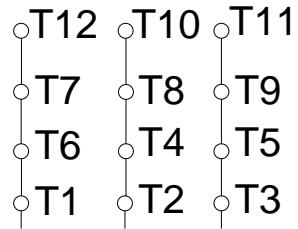
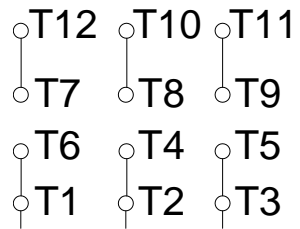
#### START

#### RUN

#### START

#### RUN

B



C

L1 L2 L3

L1 L2 L3

L1 L2 L3

L1 L2 L3

D

E

F

Notes: G voltage code

Performed by:

Checked:

Customer:

W22

Three-phase induction motor  
Frame IP55

