



# Dealers Industrial Equipment

No.:

Date: 27-SEP-2016

Customer :

## TECHNICAL PROPOSAL

### Three-phase induction motor - Squirrel cage rotor

Product line : W22 NEMA Premium - Ball Bearings

Catalog Number : 10018ET3E405TSC-W22

List Price : \$12,179

#### Notes:

Downloaded from <http://dealerselectric.com>

Generated for Model #10018ET3E405TSC-W22

Performed by:

Checked:



# Dealers Industrial Equipment

No.:

Date: 27-SEP-2016

## DATA SHEET Three-phase induction motor - Squirrel cage rotor

Customer :  
Product line : W22 NEMA Premium - Ball Bearings

Frame : 404/5TS  
Output : 100 HP  
Frequency : 60 Hz  
Poles : 4  
Full load speed : 1775 rpm  
Slip : 1.39 %  
Voltage : 208-230/460 V  
Rated current : 245-222/111 A  
Locked rotor current : 1620/810 A  
Locked rotor current (I<sub>L</sub>/I<sub>n</sub>) : 7.3  
No-load current : 76.0/38.0 A  
Full load torque : 292 lb.ft  
Locked rotor torque : 240 %  
Breakdown torque : 260 %  
Design : B  
Insulation class : F  
Temperature rise : 80 K  
Locked rotor time : 13 s (hot)  
Service factor : 1.25  
Duty cycle : S1  
Ambient temperature : -20°C - +40°C  
Altitude : 1000 m  
Degree of Protection : IP55  
Approximate weight : 1140 lb  
Moment of inertia : 29.894 sq.ft.lb  
Noise level : 68 dB(A)

|                     | D.E.    | N.D.E.  | Load | Power factor | Efficiency (%) |
|---------------------|---------|---------|------|--------------|----------------|
| Bearings            | 6314 C3 | 6314 C3 | 100% | 0.88         | 95.4           |
| Regreasing interval | 12000 h | 12000 h | 75%  | 0.84         | 95.0           |
| Grease amount       | 27 g    | 27 g    | 50%  | 0.77         | 95.0           |

Notes:  
Downloaded from <http://dealerselectric.com>  
Generated for Model #10018ET3E405TSC-W22

Performed by

Checked



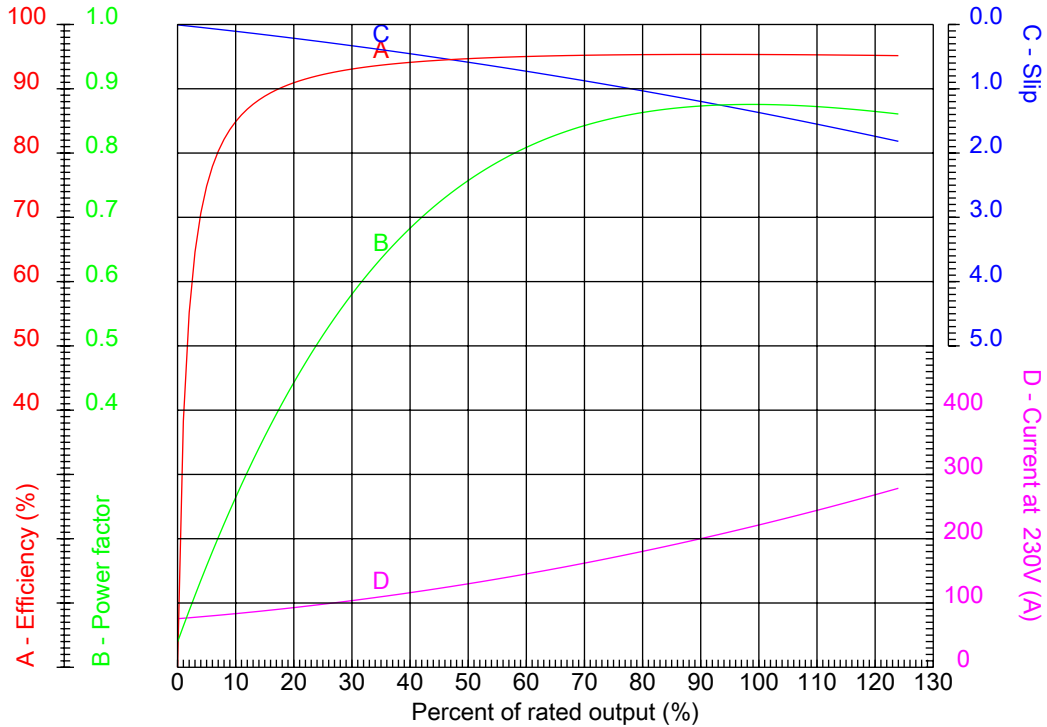
# Dealers Industrial Equipment

No.:

Date: 27-SEP-2016

## PERFORMANCE CURVES RELATED TO RATED OUTPUT

Three-phase induction motor - Squirrel cage rotor



Customer :  
 Product line : W22 NEMA Premium - Ball Bearings

|                  |                 |  |         |
|------------------|-----------------|--|---------|
| Frame            | : 404/5TS       | Locked rotor current (I <sub>l</sub> /I <sub>n</sub> ) | : 7.3   |
| Output           | : 100 HP        | Duty cycle   | : S1    |
| Frequency        | : 60 Hz         | Service factor   | : 1.25  |
| Full load speed  | : 1775 rpm      | Design   | : B     |
| Voltage          | : 208-230/460 V | Locked rotor torque                                    | : 240 % |
| Rated current    | : 245-222/111 A | Breakdown torque                                       | : 260 % |
| Insulation class | : F             |  |         |

Notes:  
 Downloaded from <http://dealerselectric.com>  
 Generated for Model #10018ET3E405TSC-W22

Performed by

Checked



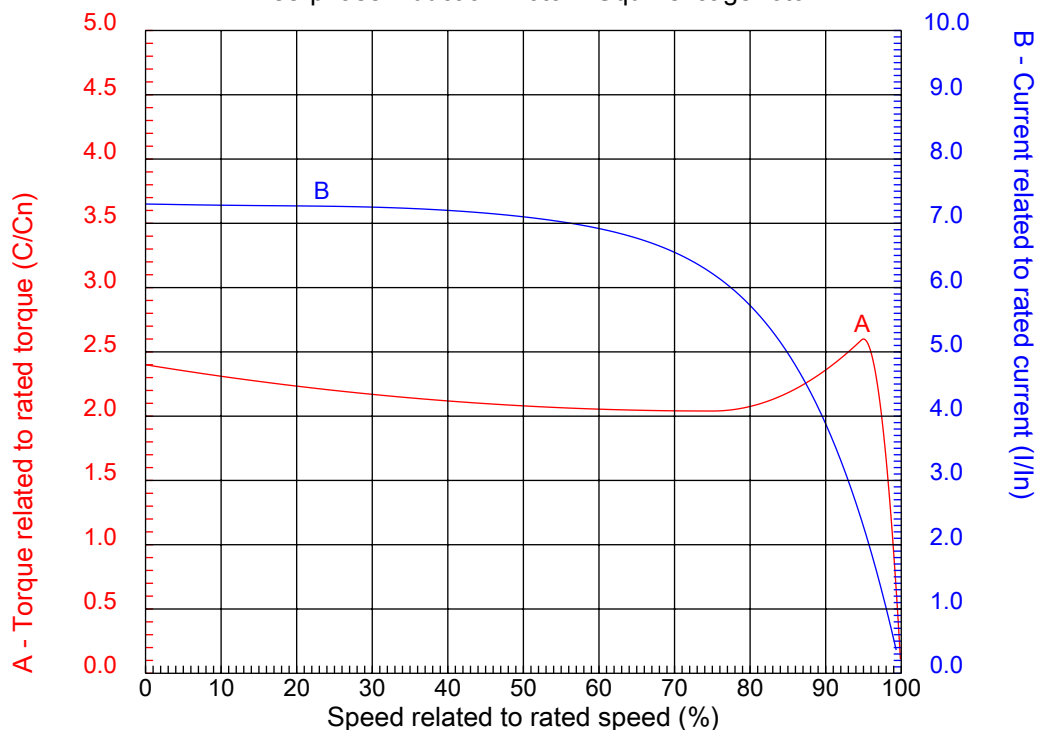
# Dealers Industrial Equipment

No.:

Date: 27-SEP-2016

## CHARACTERISTIC CURVES RELATED TO SPEED

Three-phase induction motor - Squirrel cage rotor



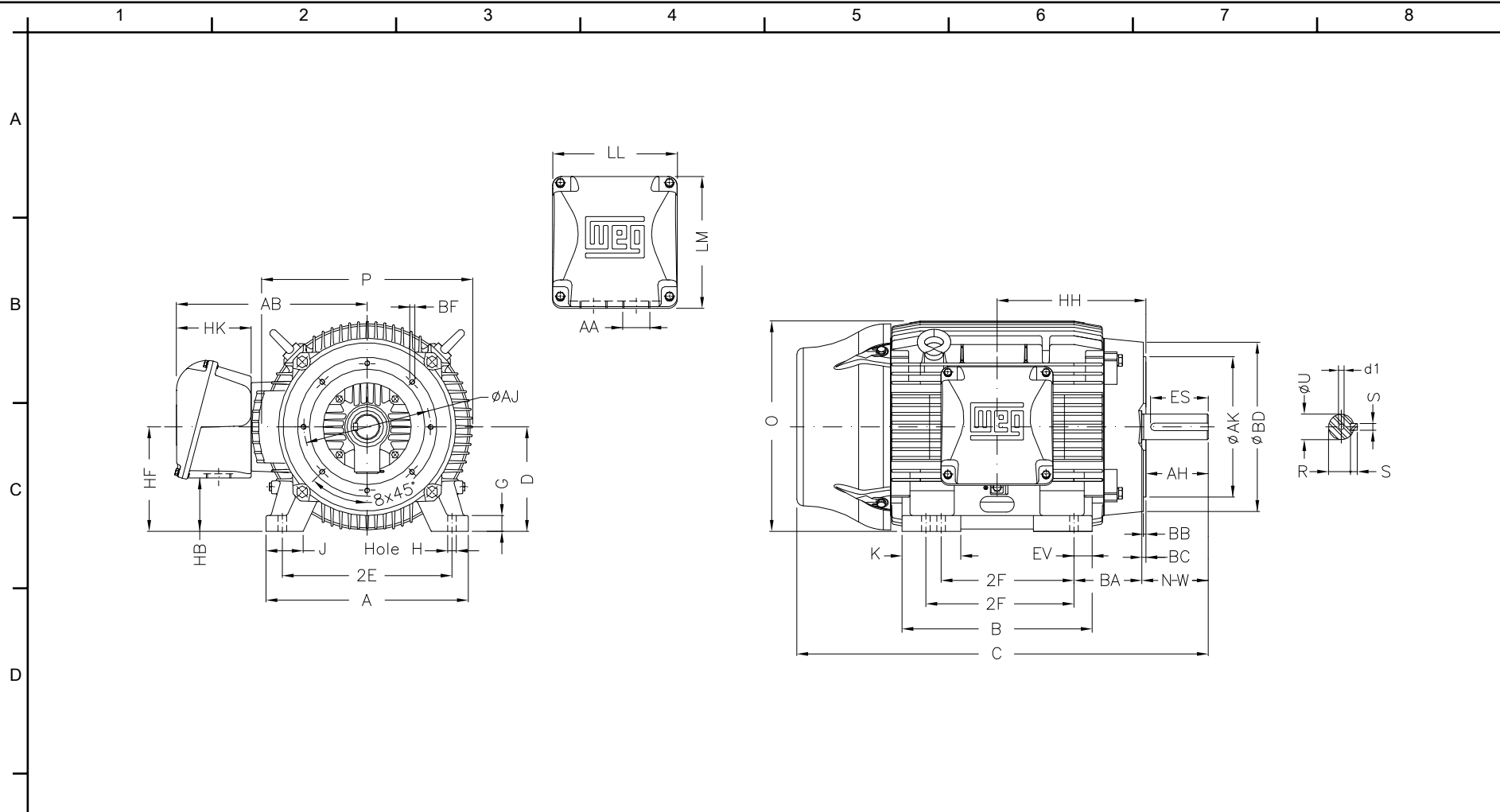
Customer :  
Product line : W22 NEMA Premium - Ball Bearings

|                  |                 |  |         |
|------------------|-----------------|--|---------|
| Frame            | : 404/5TS       | Locked rotor current (I <sub>l</sub> /I <sub>n</sub> ) | : 7.3   |
| Output           | : 100 HP        | Duty cycle   | : S1    |
| Frequency        | : 60 Hz         | Service factor   | : 1.25  |
| Full load speed  | : 1775 rpm      | Design   | : B     |
| Voltage          | : 208-230/460 V | Locked rotor torque                                    | : 240 % |
| Rated current    | : 245-222/111 A | Breakdown torque                                       | : 260 % |
| Insulation class | : F             |  |         |

Notes:  
Downloaded from <http://dealerselectric.com>  
Generated for Model #10018ET3E405TSC-W22

Performed by

Checked



|   |               |        |        |              |        |
|---|---------------|--------|--------|--------------|--------|
| E | 2E            | J      | A      | P            | AB     |
|   | 15.984        | 3.937  | 19.921 | 19.134       | 16.016 |
| F | 2F            | K      | B      | BA           | FBA    |
|   | 12.244/13.740 | 5.669  | 18.386 | 6.625        | 13.926 |
| F | U             | N-W    | ES     | S            | R      |
|   | 2.125         | 4.250  | 2.756  | 0.500        | 1.842  |
| F | depth         | D      | G      | HB           | O      |
|   | 0.500         | 10.000 | 1.811  | 5.252        | 19.566 |
| F | HH            | HK     | EV     | H            | C      |
|   | 13.496        | 6.024  | 2.323  | 0.810        | 36.732 |
| F | LL            | LM     | AA     | d1           | Flange |
|   | 10.591        | 11.267 | NPT 3" | DUNC 3/4"-10 | FC-279 |
| F | AJ            | AK     | BD     | BF           | BB     |
|   | 11.000        | 12.500 | 15.55  | UNC 5/8"x11  | 0.250  |
| F | BC            | AH     |        |              |        |
|   | 0.250         | 4.000  |        |              |        |

Notes: Downloaded from <http://dealerselectric.com>  
 Generated for Model #10018ET3E405TSC-W22

Performed by:


Checked:

Customer:

W22 NEMA Premium - Ball Bearings

Three-phase induction motor  
 Frame 404/5TS - IP55

27-SEP-2016



1 2 3 4 5 6 7 8

A  
B  
C  
D  
E  
F

LOW VOLTAGE

HIGH VOLTAGE



CONNECTIONS FOR STARTING ONLY:

LOW VOLTAGE

HIGH VOLTAGE



Notes: Downloaded from <http://dealerselectric.com>  
Generated for Model #10018ET3E405TSC-W22

Performed by:

Checked:

Customer:

W22 NEMA Premium - Ball Bearings

Three-phase induction motor  
Frame 404/5TS - IP55

27-SEP-2016

