



Dealers Industrial Equipment

No.:

Date: 27-SEP-2016

Customer :

TECHNICAL PROPOSAL

Three-phase induction motor - Squirrel cage rotor

Product line : Close Coupled Pump: Three-Phase - W22 "JM" Type - TEFC - NEMA Premium

Catalog Number : 07536ET3H365JM-W22

List Price : \$11,124

Notes:

Downloaded from <http://dealerselectric.com>

Generated for Model #07536ET3H365JM-W22

Performed by:

Checked:



Dealers Industrial Equipment

No.:

Date: 27-SEP-2016

DATA SHEET

Three-phase induction motor - Squirrel cage rotor

Customer :
 Product line : Close Coupled Pump: Three-Phase - W22 "JM" Type - TEFC - NEMA Premium

Frame : 364/5JM
 Output : 75 HP
 Frequency : 60 Hz
 Poles : 2
 Full load speed : 3555 rpm
 Slip : 1.25 %
 Voltage : 575 V
 Rated current : 65.5 A
 Locked rotor current : 439 A
 Locked rotor current (I_L/I_n) : 6.7
 No-load current : 17.6 A
 Full load torque : 109 lb.ft
 Locked rotor torque : 200 %
 Breakdown torque : 260 %
 Design : B
 Insulation class : F
 Temperature rise : 80 K
 Locked rotor time : 10 s (hot)
 Service factor : 1.25
 Duty cycle : S1
 Ambient temperature : -20°C - +40°C
 Altitude : 1000 m
 Degree of Protection : IP55
 Approximate weight : 847 lb
 Moment of inertia : 11.919 sq.ft.lb
 Noise level : 79 dB(A)

| | D.E. | N.D.E. | Load | Power factor | Efficiency (%) |
|---------------------|---------|---------|------|--------------|----------------|
| Bearings | 6314 C3 | 6314 C3 | 100% | 0.90 | 93.6 |
| Regreasing interval | 4000 h | 4000 h | 75% | 0.88 | 93.6 |
| Grease amount | 27 g | 27 g | 50% | 0.83 | 92.4 |

Notes:
 Downloaded from <http://dealerselectric.com>
 Generated for Model #07536ET3H365JM-W22

Performed by

Checked



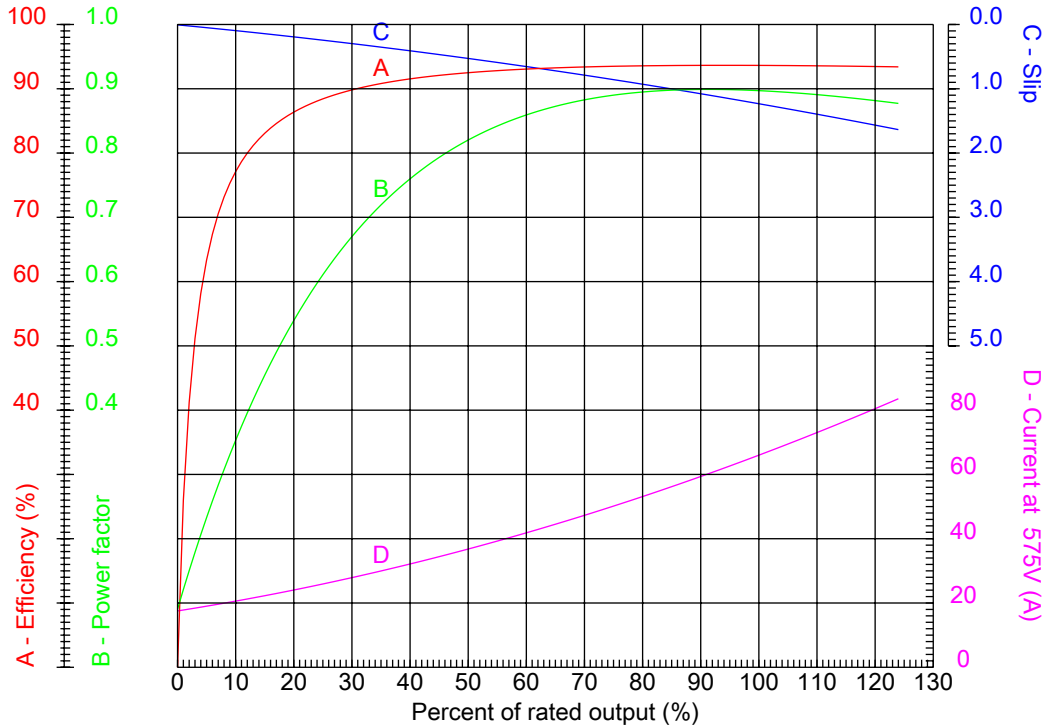
Dealers Industrial Equipment

No.:

Date: 27-SEP-2016

PERFORMANCE CURVES RELATED TO RATED OUTPUT

Three-phase induction motor - Squirrel cage rotor



Customer :
Product line : Close Coupled Pump: Three-Phase - W22 "JM" Type - TEFC - NEMA Premium

| | | | |
|------------------|------------|--|---------|
| Frame | : 364/5JM | Locked rotor current (I _l /I _n) | : 6.7 |
| Output | : 75 HP | Duty cycle | : S1 |
| Frequency | : 60 Hz | Service factor | : 1.25 |
| Full load speed | : 3555 rpm | Design | : B |
| Voltage | : 575 V | Locked rotor torque | : 200 % |
| Rated current | : 65.5 A | Breakdown torque | : 260 % |
| Insulation class | : F | | |

Notes:
Downloaded from <http://dealerselectric.com>
Generated for Model #07536ET3H365JM-W22

Performed by

Checked



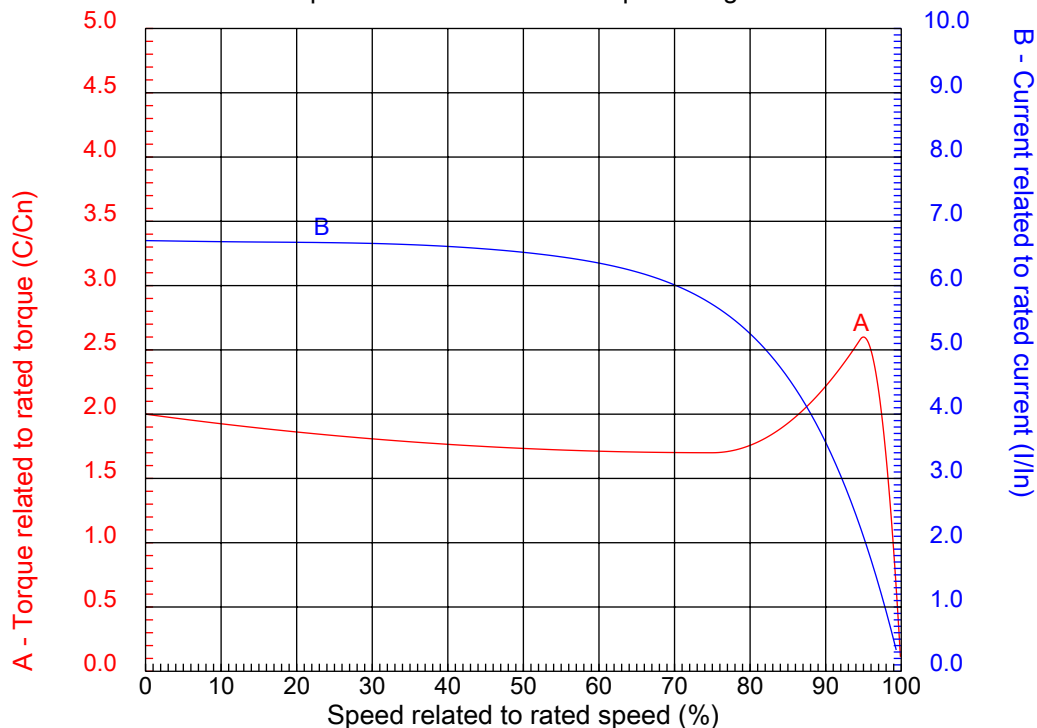
Dealers Industrial Equipment

No.:

Date: 27-SEP-2016

CHARACTERISTIC CURVES RELATED TO SPEED

Three-phase induction motor - Squirrel cage rotor



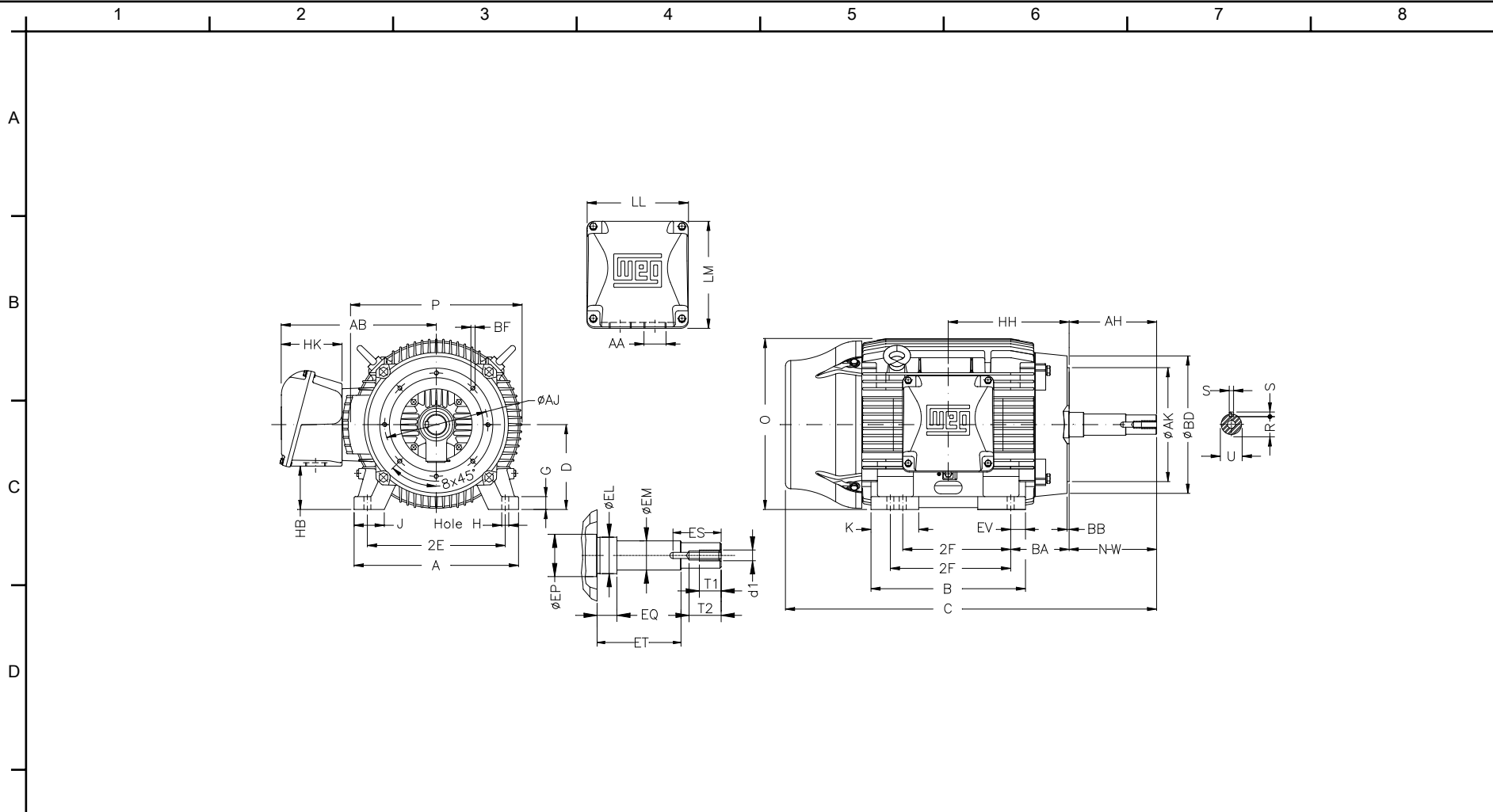
Customer :
Product line : Close Coupled Pump: Three-Phase - W22 "JM" Type - TEFC - NEMA Premium

| | | | |
|------------------|------------|--|---------|
| Frame | : 364/5JM | Locked rotor current (I _l /I _n) | : 6.7 |
| Output | : 75 HP | Duty cycle | : S1 |
| Frequency | : 60 Hz | Service factor | : 1.25 |
| Full load speed | : 3555 rpm | Design | : B |
| Voltage | : 575 V | Locked rotor torque | : 200 % |
| Rated current | : 65.5 A | Breakdown torque | : 260 % |
| Insulation class | : F | | |

Notes:
Downloaded from <http://dealerselectric.com>
Generated for Model #07536ET3H365JM-W22

Performed by

Checked



Notes: Downloaded from <http://dealerselectric.com>
 Generated for Model #07536ET3H365JM-W22

| | | | | | |
|---|---------------------|-------------------|------------------|--------------|--------------------|
| E | 2E 14.016 | J 3.150 | A 17.165 | P 17.914 | AB 16.016 |
| | 2F 11.260/12.244 | K 4.138 | B 16.220 | BA 5.875 | D 9.000 |
| | G 1.480 | O 17.716 | H 0.660 | AA NPT 3" | EQ 0.630 |
| | ET 3.006 | U 1.249 | EM 1.375 | EL 1.750 | EP 2.756 |
| | ES 2.480 | t1 0.984 | t2 1.496 | C 33.832 | d1 EUNC 1/2"-13 |
| F | HH 11.988 | HK 6.024 | HB 4.251 | LL 10.591 | LM 11.267 |
| | S 0.250 | R 1.110 | Flange FC-279 | AJ 11.000 | AK 12.500 |
| | BD 15.562 | BF UNC 5/8"x11 | BB 0.248 | AH 5.250 | |

Performed by:

Checked:

Customer:

Close Coupled Pump: Three-Phase - W22 "JM" Type - TEFC - NEMA Premium

Three-phase induction motor
 Frame 364/5JM - IP55

27-SEP-2016



1 2 3 4 5 6 7 8

A

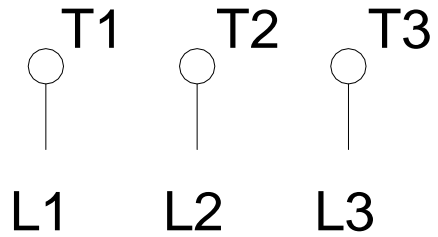
B

C

D

E

F



Notes: Downloaded from <http://dealerselectric.com>
Generated for Model #07536ET3H365JM-W22

Performed by:

Checked:

Customer:

Close Coupled Pump: Three-Phase - W22 "JM" Type - TEFC - NEMA Premium

Three-phase induction motor
Frame 364/5JM - IP55

27-SEP-2016

