



Dealers Industrial Equipment

No.:

Date: 27-SEP-2016

Customer :

TECHNICAL PROPOSAL

Three-phase induction motor - Squirrel cage rotor

Product line : Close Coupled Pump: Three-Phase - W22 "JP" Type - TEFC - NEMA Premium

Catalog Number : 07536ET3G365JP-W22

List Price : \$11,321

Notes:

Downloaded from <http://dealerselectric.com>

Generated for Model #07536ET3G365JP-W22

Performed by:

Checked:



Dealers Industrial Equipment

No.:

Date: 27-SEP-2016

DATA SHEET Three-phase induction motor - Squirrel cage rotor

Customer :
 Product line : Close Coupled Pump: Three-Phase - W22 "JP" Type - TEFC - NEMA Premium

Frame : 364/5JP
 Output : 75 HP
 Frequency : 60 Hz
 Poles : 2
 Full load speed : 3555 rpm
 Slip : 1.25 %
 Voltage : 460 V
 Rated current : 81.9 A
 Locked rotor current : 549 A
 Locked rotor current (I_L/I_n) : 6.7
 No-load current : 22.0 A
 Full load torque : 109 lb.ft
 Locked rotor torque : 200 %
 Breakdown torque : 260 %
 Design : B
 Insulation class : F
 Temperature rise : 80 K
 Locked rotor time : 10 s (hot)
 Service factor : 1.25
 Duty cycle : S1
 Ambient temperature : -20°C - +40°C
 Altitude : 1000 m
 Degree of Protection : IP55
 Approximate weight : 847 lb
 Moment of inertia : 11.919 sq.ft.lb
 Noise level : 79 dB(A)

	D.E.	N.D.E.	Load	Power factor	Efficiency (%)
Bearings	6314 C3	6314 C3	100%	0.90	93.6
Regreasing interval	4000 h	4000 h	75%	0.88	93.6
Grease amount	27 g	27 g	50%	0.83	92.4

Notes:
 Downloaded from <http://dealerselectric.com>
 Generated for Model #07536ET3G365JP-W22

Performed by

Checked



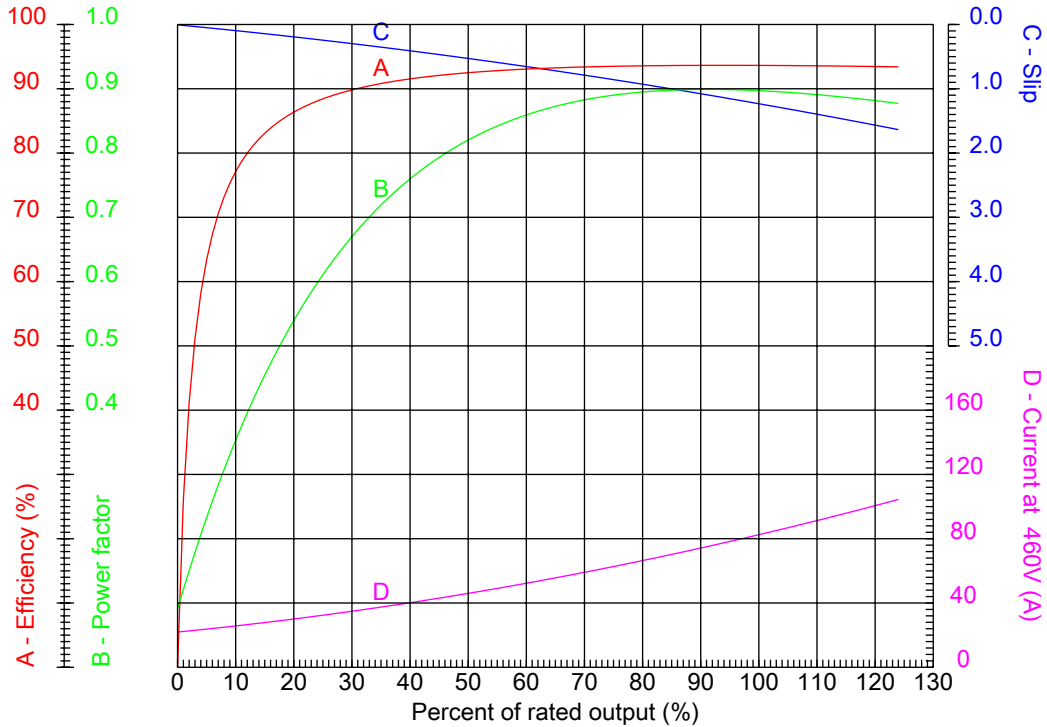
Dealers Industrial Equipment

No.:

Date: 27-SEP-2016

PERFORMANCE CURVES RELATED TO RATED OUTPUT

Three-phase induction motor - Squirrel cage rotor



Customer :
 Product line : Close Coupled Pump: Three-Phase - W22 "JP" Type - TEFC - NEMA Premium

Frame : 364/5JP	Locked rotor current (I _l /I _n) : 6.7
Output : 75 HP	Duty cycle : S1
Frequency : 60 Hz	Service factor : 1.25
Full load speed : 3555 rpm	Design : B
Voltage : 460 V	Locked rotor torque : 200 %
Rated current : 81.9 A	Breakdown torque : 260 %
Insulation class : F	

Notes:
 Downloaded from <http://dealerselectric.com>
 Generated for Model #07536ET3G365JP-W22

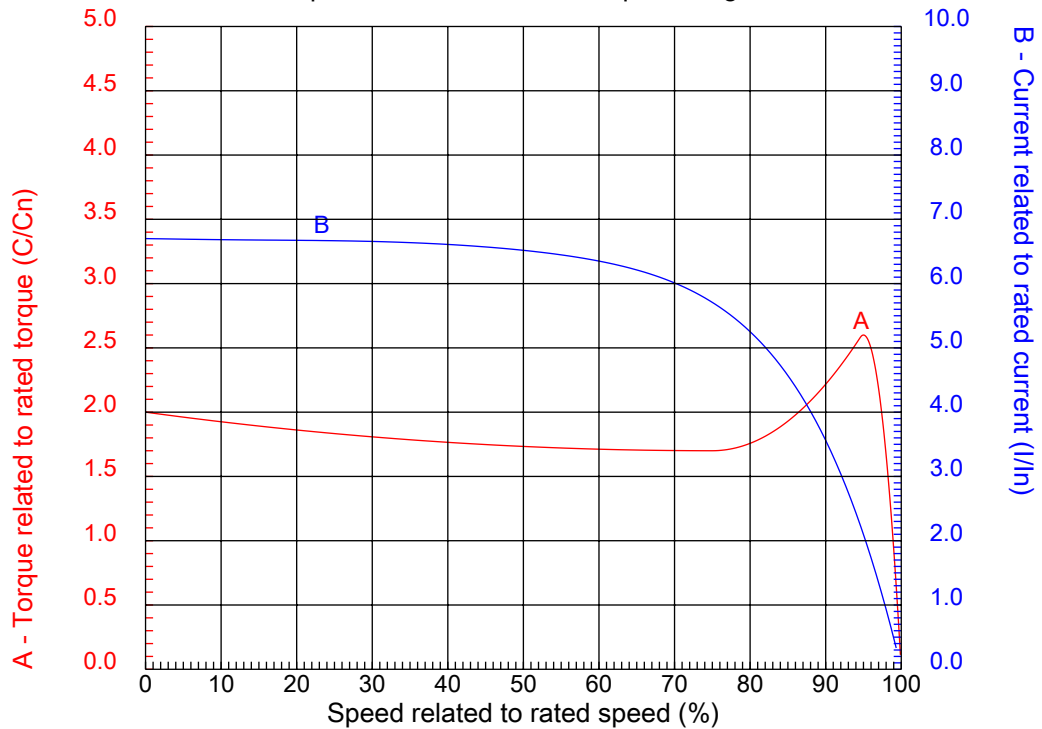
Performed by

Checked



CHARACTERISTIC CURVES RELATED TO SPEED

Three-phase induction motor - Squirrel cage rotor



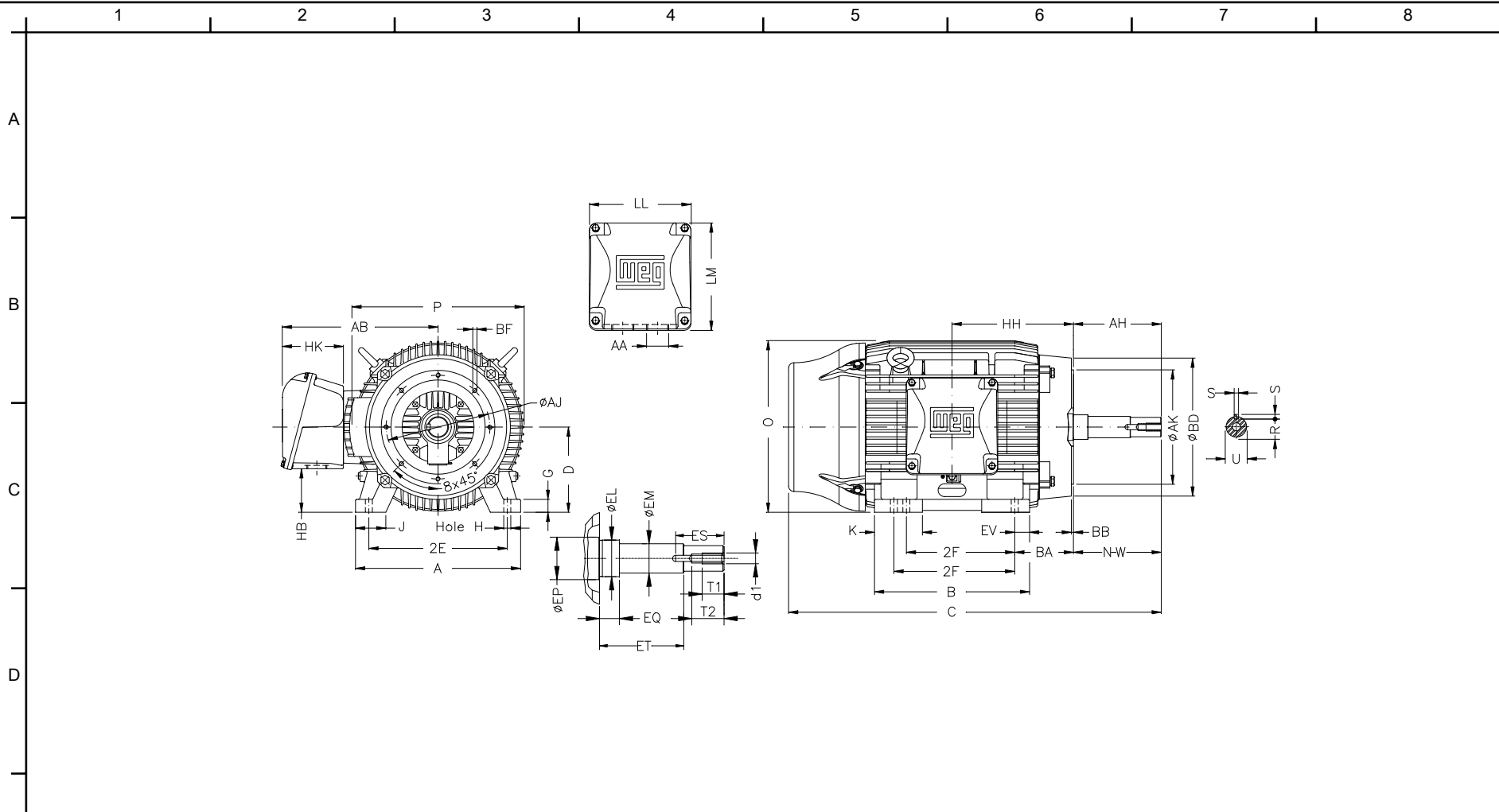
Customer :
Product line : Close Coupled Pump: Three-Phase - W22 "JP" Type - TEFC - NEMA Premium

Frame	: 364/5JP	Locked rotor current (I _l /I _n)	: 6.7
Output	: 75 HP	Duty cycle	: S1
Frequency	: 60 Hz	Service factor	: 1.25
Full load speed	: 3555 rpm	Design	: B
Voltage	: 460 V	Locked rotor torque	: 200 %
Rated current	: 81.9 A	Breakdown torque	: 260 %
Insulation class	: F		

Notes:
Downloaded from <http://dealerselectric.com>
Generated for Model #07536ET3G365JP-W22

Performed by

Checked



Notes: Downloaded from <http://dealerselectric.com>
 Generated for Model #07536ET3G365JP-W22

E	2E 14.016	J 3.150	A 17.165	P 17.914	AB 16.016
	2F 11.260/12.244	K 4.138	B 16.220	BA 5.875	D 9.000
	G 1.480	O 17.716	H 0.660	AA NPT 3"	EQ 2.382
	ET 5.886	U 1.624	EM 1.750	EL 2.125	EP 2.756
	ES 2.480	t1 0.984	t2 1.496	C 36.711	d1 EUNC 1/2"-13
F	HH 11.988	HK 6.024	HB 4.251	LL 10.591	LM 11.267
	S 0.375	R 1.413	Flange FC-279	AJ 11.000	AK 12.500
	BD 15.562	BF UNC 5/8"x11	BB 0.248	AH 8.130	

Performed by:

Checked:

Customer:

Close Coupled Pump: Three-Phase - W22 "JP" Type - TEFC - NEMA Premium

Three-phase induction motor
 Frame 364/5JP - IP55

27-SEP-2016



1 2 3 4 5 6 7 8

A
B
C
D
E
F

RUN



ONLY FOR START



Notes: Downloaded from http://dealerselectric.com Generated for Model #07536ET3G365JP-W22		
Performed by:		
Checked:		
Customer:		
Close Coupled Pump: Three-Phase - W22 "JP" Type - TEFC - NEMA Premium		
Three-phase induction motor Frame 364/5JP - IP55	27-SEP-2016	