



Dealers Industrial Equipment

No.:

Date: 27-SEP-2016

Customer :

TECHNICAL PROPOSAL

Three-phase induction motor - Squirrel cage rotor

Product line : Three-Phase: W22 IEEE-841™ Petrochem Motors - NEMA Premium® Efficiency

Catalog Number : 06018ST3HIE364T-W22

List Price : \$8,044

Notes:

Downloaded from <http://dealerselectric.com>

Generated for Model #06018ST3HIE364T-W22

Performed by:

Checked:



Dealers Industrial Equipment

No.:

Date: 27-SEP-2016

DATA SHEET

Three-phase induction motor - Squirrel cage rotor

Customer :
Product line : Three-Phase: W22 IEEE-841™ Petrochem Motors - NEMA Premium® Efficiency

Frame : 364/5T
Output : 60 HP
Frequency : 60 Hz
Poles : 4
Full load speed : 1775 rpm
Slip : 1.39 %
Voltage : 575 V
Rated current : 54.6 A
Locked rotor current : 361 A
Locked rotor current (I_L/I_n) : 6.6
No-load current : 19.2 A
Full load torque : 175 lb.ft
Locked rotor torque : 240 %
Breakdown torque : 260 %
Design : B
Insulation class : F
Temperature rise : 80 K
Locked rotor time : 15 s (hot)
Service factor : 1.25
Duty cycle : S1
Ambient temperature : -20°C - +40°C
Altitude : 1000 m
Degree of Protection : IP55
Approximate weight : 869 lb
Moment of inertia : 22.421 sq.ft.lb
Noise level : 67 dB(A)

| | D.E. | N.D.E. |
|---------------------|---------|---------|
| Bearings | 6314 C3 | 6314 C3 |
| Regreasing interval | 12000 h | 12000 h |
| Grease amount | 27 g | 27 g |

| Load | Power factor | Efficiency (%) |
|------|--------------|----------------|
| 100% | 0.87 | 95.0 |
| 75% | 0.83 | 94.5 |
| 50% | 0.75 | 94.1 |

Notes:

Downloaded from <http://dealerselectric.com>
Generated for Model #06018ST3HIE364T-W22

Performed by

Checked



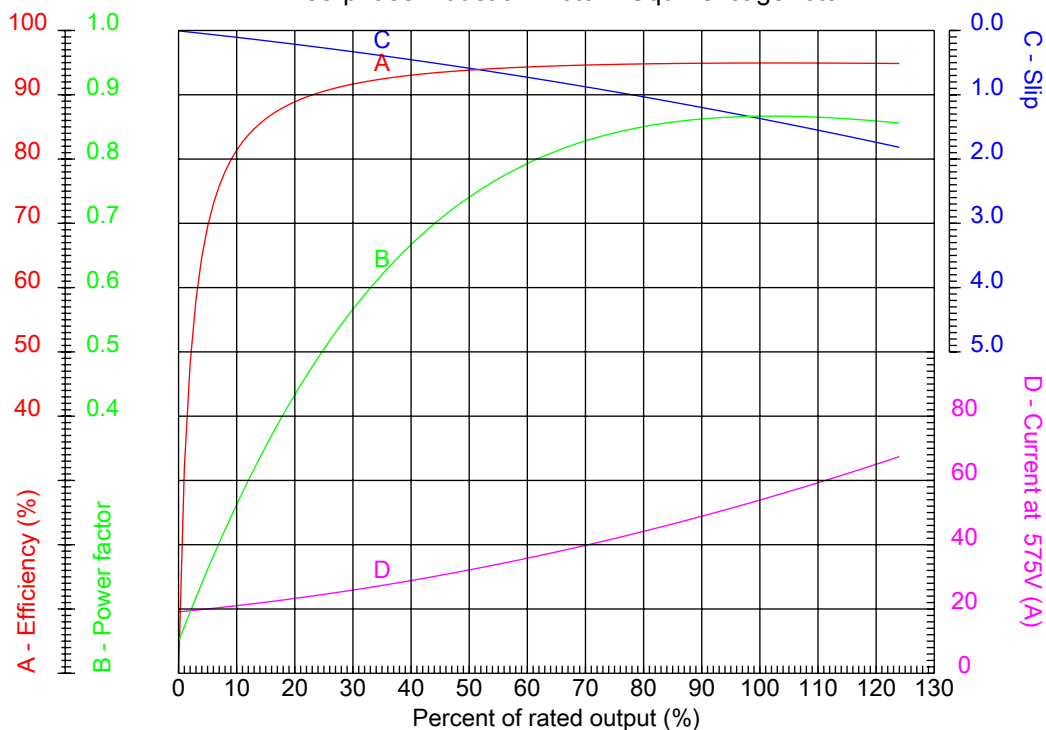
Dealers Industrial Equipment

No.:

Date: 27-SEP-2016

PERFORMANCE CURVES RELATED TO RATED OUTPUT

Three-phase induction motor - Squirrel cage rotor



Customer :
Product line : Three-Phase: W22 IEEE-841™ Petrochem Motors - NEMA Premium® Efficiency

| | | | |
|------------------|------------|--|---------|
| Frame | : 364/5T | Locked rotor current (I _L /I _n) | : 6.6 |
| Output | : 60 HP | Duty cycle | : S1 |
| Frequency | : 60 Hz | Service factor | : 1.25 |
| Full load speed | : 1775 rpm | Design | : B |
| Voltage | : 575 V | Locked rotor torque | : 240 % |
| Rated current | : 54.6 A | Breakdown torque | : 260 % |
| Insulation class | : F | | |

Notes:
Downloaded from <http://dealerselectric.com>
Generated for Model #06018ST3HIE364T-W22

Performed by

Checked



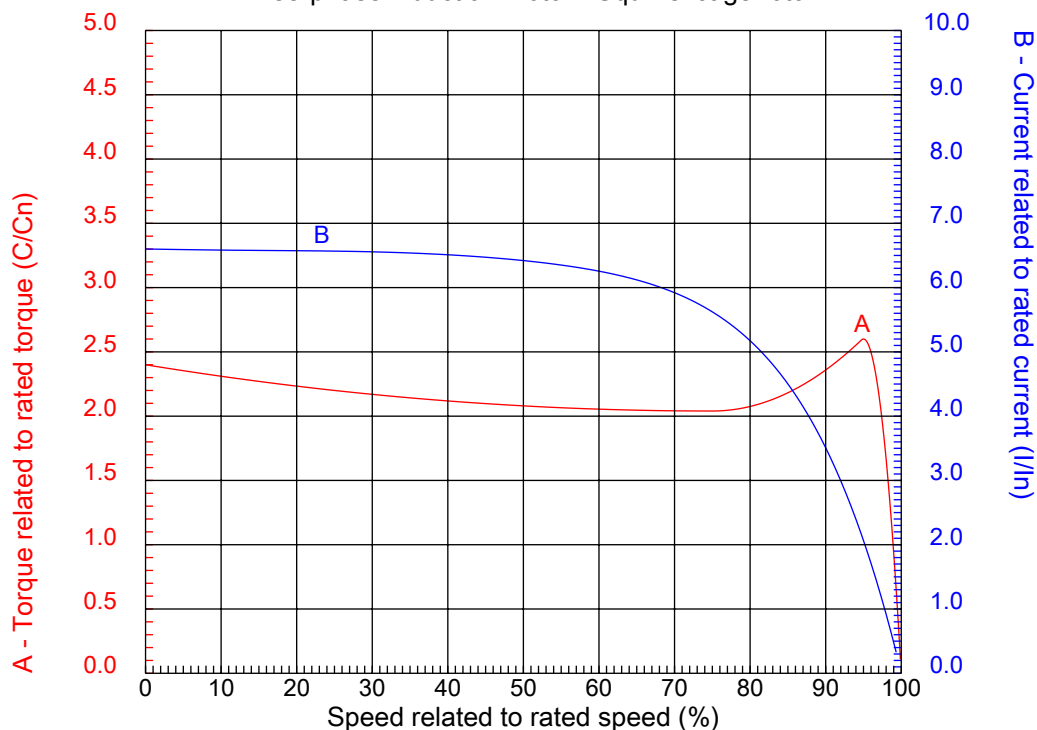
Dealers Industrial Equipment

No.:

Date: 27-SEP-2016

CHARACTERISTIC CURVES RELATED TO SPEED

Three-phase induction motor - Squirrel cage rotor



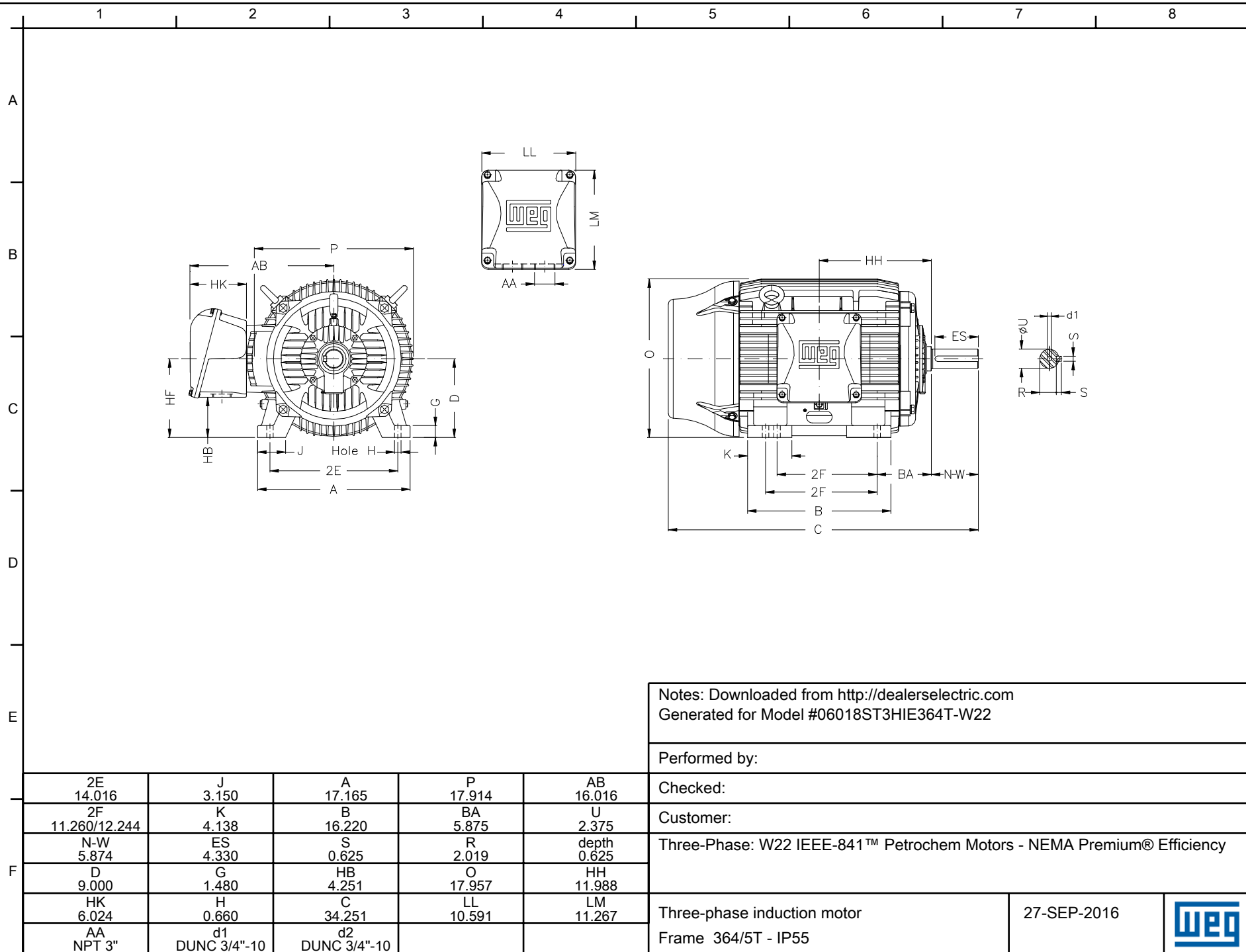
Customer :
Product line : Three-Phase: W22 IEEE-841™ Petrochem Motors - NEMA Premium® Efficiency

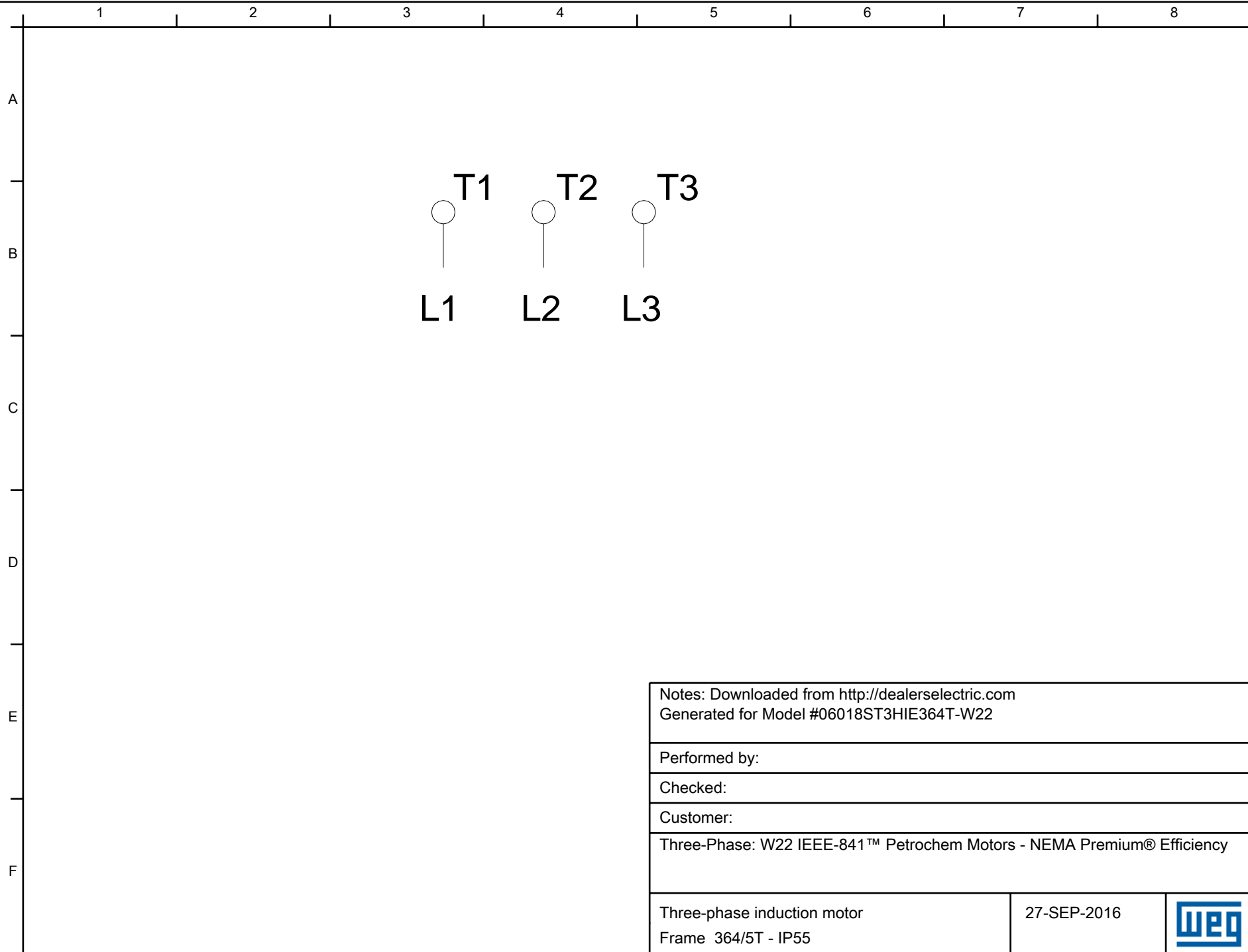
| | | | |
|------------------|------------|--|---------|
| Frame | : 364/5T | Locked rotor current (I _L /I _n) | : 6.6 |
| Output | : 60 HP | Duty cycle | : S1 |
| Frequency | : 60 Hz | Service factor | : 1.25 |
| Full load speed | : 1775 rpm | Design | : B |
| Voltage | : 575 V | Locked rotor torque | : 240 % |
| Rated current | : 54.6 A | Breakdown torque | : 260 % |
| Insulation class | : F | | |


Notes:
Downloaded from <http://dealerselectric.com>
Generated for Model #06018ST3HIE364T-W22

Performed by

Checked





| | | |
|--|-------------|---|
| Notes: Downloaded from http://dealerselectric.com Generated for Model #06018ST3HIE364T-W22 | | |
| Performed by: | | |
| Checked: | | |
| Customer: | | |
| Three-Phase: W22 IEEE-841™ Petrochem Motors - NEMA Premium® Efficiency | | |
| Three-phase induction motor Frame 364/5T - IP55 | 27-SEP-2016 |  |