



Dealers Industrial Equipment

No.:

Date: 27-SEP-2016

Customer :

TECHNICAL PROPOSAL

Three-phase induction motor - Squirrel cage rotor

Product line : Three-Phase: W22 IEEE-841™ Petrochem Motors - NEMA Premium® Efficiency

Catalog Number : 06012ST3QIE404TC-W22

List Price : \$12,315

Notes:

Downloaded from <http://dealerselectric.com>

Generated for Model #06012ST3QIE404TC-W22

Performed by:

Checked:



Dealers Industrial Equipment

No.:

Date: 27-SEP-2016

DATA SHEET

Three-phase induction motor - Squirrel cage rotor

Customer :
 Product line : Three-Phase: W22 IEEE-841™ Petrochem Motors - NEMA Premium® Efficiency

Frame : 404/5T
 Output : 60 HP
 Frequency : 60 Hz
 Poles : 6
 Full load speed : 1185 rpm
 Slip : 1.25 %
 Voltage : 460 V
 Rated current : 69.5 A
 Locked rotor current : 493 A
 Locked rotor current (I_L/I_n) : 7.1
 No-load current : 25.0 A
 Full load torque : 262 lb.ft
 Locked rotor torque : 200 %
 Breakdown torque : 230 %
 Design : B
 Insulation class : F
 Temperature rise : 80 K
 Locked rotor time : 20 s (hot)
 Service factor : 1.25
 Duty cycle : S1
 Ambient temperature : -20°C - +40°C
 Altitude : 1000 m
 Degree of Protection : IP55
 Approximate weight : 1036 lb
 Moment of inertia : 36.858 sq.ft.lb
 Noise level : 68 dB(A)

	D.E.	N.D.E.
Bearings	6316 C3	6314 C3
Regreasing interval	16000 h	17000 h
Grease amount	34 g	27 g

Load	Power factor	Efficiency (%)
100%	0.86	94.5
75%	0.82	94.5
50%	0.74	94.1

Notes:
 Downloaded from <http://dealerselectric.com>
 Generated for Model #06012ST3QIE404TC-W22

Performed by

Checked



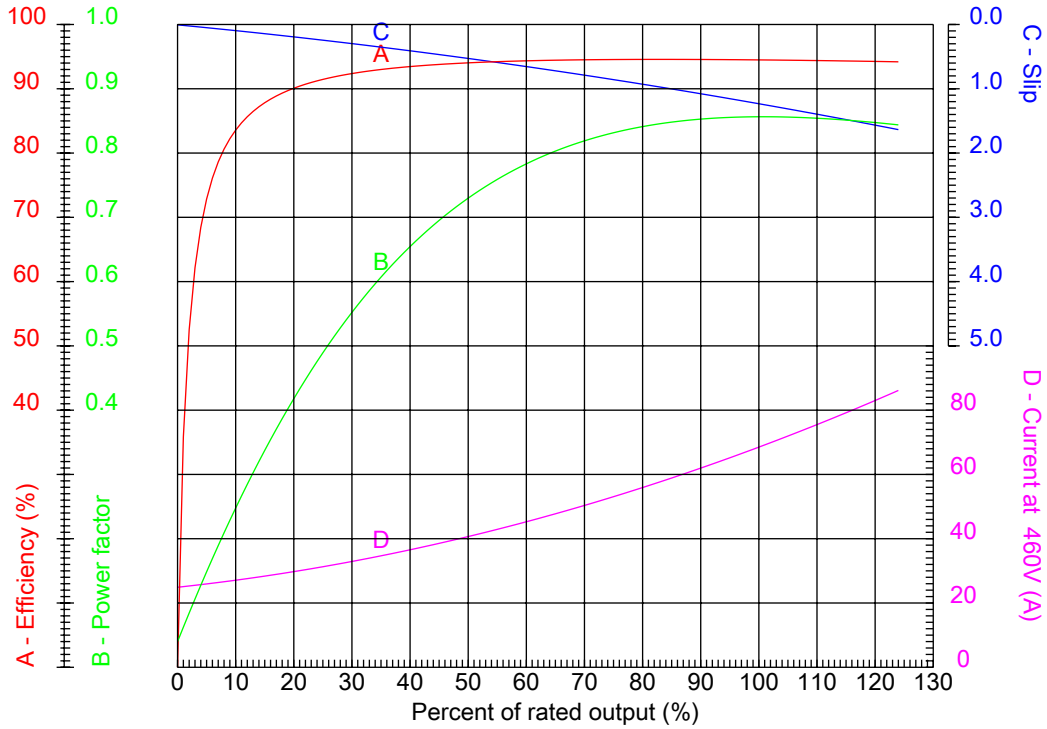
Dealers Industrial Equipment

No.:

Date: 27-SEP-2016

PERFORMANCE CURVES RELATED TO RATED OUTPUT

Three-phase induction motor - Squirrel cage rotor



Customer :
 Product line : Three-Phase: W22 IEEE-841™ Petrochem Motors - NEMA Premium® Efficiency

Frame	: 404/5T	Locked rotor current (I _l /I _n)	: 7.1
Output	: 60 HP	Duty cycle	: S1
Frequency	: 60 Hz	Service factor	: 1.25
Full load speed	: 1185 rpm	Design	: B
Voltage	: 460 V	Locked rotor torque	: 200 %
Rated current	: 69.5 A	Breakdown torque	: 230 %
Insulation class	: F		

Notes:
 Downloaded from <http://dealerselectric.com>
 Generated for Model #06012ST3QIE404TC-W22

Performed by

Checked



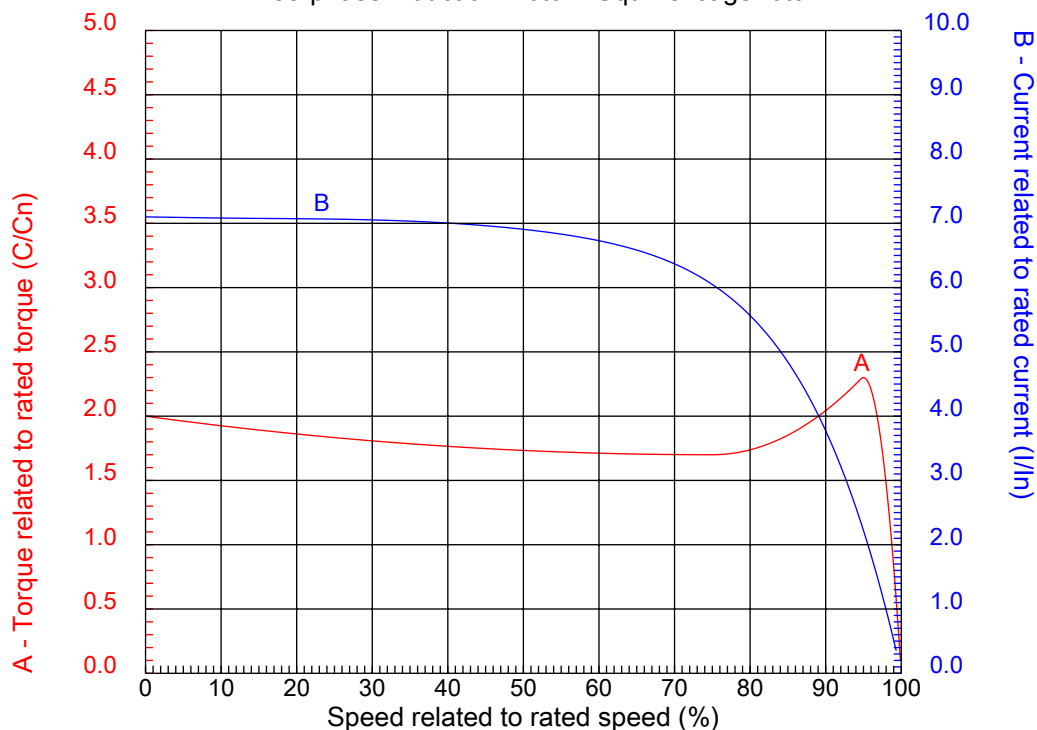
Dealers Industrial Equipment

No.:

Date: 27-SEP-2016

CHARACTERISTIC CURVES RELATED TO SPEED

Three-phase induction motor - Squirrel cage rotor



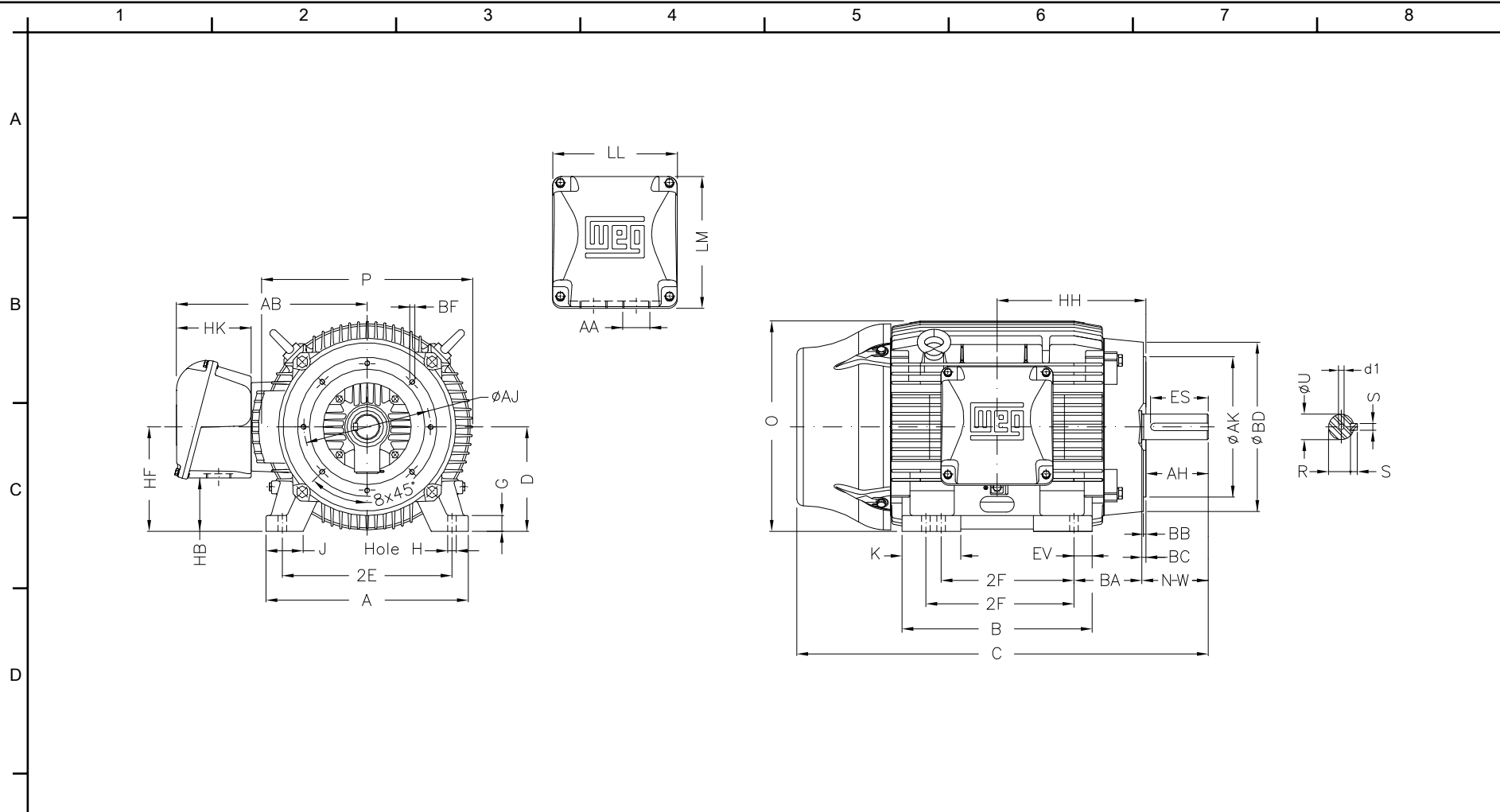
Customer :
Product line : Three-Phase: W22 IEEE-841™ Petrochem Motors - NEMA Premium® Efficiency

Frame	: 404/5T	Locked rotor current (I _l /I _n)	: 7.1
Output	: 60 HP	Duty cycle	: S1
Frequency	: 60 Hz	Service factor	: 1.25
Full load speed	: 1185 rpm	Design	: B
Voltage	: 460 V	Locked rotor torque	: 200 %
Rated current	: 69.5 A	Breakdown torque	: 230 %
Insulation class	: F		

Notes:
Downloaded from <http://dealerselectric.com>
Generated for Model #06012ST3QIE404TC-W22

Performed by

Checked



Notes: Downloaded from <http://dealerselectric.com>
 Generated for Model #06012ST3QIE404TC-W22

2E	J	A	P	AB
15.984	3.937	19.921	19.134	16.016
2F	K	B	BA	U
12.244/13.740	5.669	18.386	6.625	2.875
N-W	ES	S	R	depth
7.250	5.708	0.750	2.449	0.750
D	G	HB	O	HH
10.000	1.811	5.252	19.566	13.496
HK	H	C	LL	LM
6.024	0.810	39.730	10.591	11.267
AA	d1	d2	Flange	AJ
NPT 3"	DUNC 3/4"-10	DUNC 3/4"-10	FC-279	11.000
AK	BD	BF	BB	BC
12.500	15.55	UNC 5/8"x11	0.250	0.250
AH				
7.000				

Performed by:
 Checked:
 Customer:
 Three-Phase: W22 IEEE-841™ Petrochem Motors - NEMA Premium® Efficiency

Three-phase induction motor Frame 404/5T - IP55	27-SEP-2016	
--	-------------	--

1 2 3 4 5 6 7 8

A
B
C
D
E
F

RUN



ONLY FOR START



Notes: Downloaded from <http://dealerselectric.com>
 Generated for Model #06012ST3QIE404TC-W22

Performed by:

Checked:

Customer:

Three-Phase: W22 IEEE-841™ Petrochem Motors - NEMA Premium® Efficiency

Three-phase induction motor
 Frame 404/5T - IP55

27-SEP-2016

