



Dealers Industrial Equipment

No.:

Date: 27-SEP-2016

Customer :

TECHNICAL PROPOSAL

Three-phase induction motor - Squirrel cage rotor

Product line : Three-Phase : Explosion Proof - NEMA Premium

Catalog Number : 05036XT3H326TS

List Price : \$6,582

Notes:

Downloaded from <http://dealerselectric.com>

Generated for Model #05036XT3H326TS

Performed by:

Checked:



Dealers Industrial Equipment

No.:

Date: 27-SEP-2016

DATA SHEET Three-phase induction motor - Squirrel cage rotor

Customer :
 Product line : Three-Phase : Explosion Proof - NEMA Premium

Frame : 326TS
 Output : 50 HP
 Frequency : 60 Hz
 Poles : 2
 Full load speed : 3550 rpm
 Slip : 1.39 %
 Voltage : 575 V
 Rated current : 44.4 A
 Locked rotor current : 320 A
 Locked rotor current (I_L/I_n) : 7.2
 No-load current : 11.8 A
 Full load torque : 73.0 lb.ft
 Locked rotor torque : 210 %
 Breakdown torque : 210 %
 Design : B
 Insulation class : F
 Temperature rise : 80 K
 Locked rotor time : 33 s (hot)
 Service factor : 1.15
 Duty cycle : S1
 Ambient temperature : -20°C - +40°C
 Altitude : 1000 m
 Degree of Protection : IP55
 Approximate weight : 728 lb
 Moment of inertia : 5.4187 sq.ft.lb
 Noise level : 81 dB(A)

	D.E.	N.D.E.
Bearings	6312 2RS-C3	6212 2RS-C3
Regreasing interval	---	---
Grease amount	---	---

Load	Power factor	Efficiency (%)
100%	0.89	94.1
75%	0.88	93.6
50%	0.82	92.4

Notes:
 Downloaded from <http://dealerselectric.com>
 Generated for Model #05036XT3H326TS

Performed by

Checked



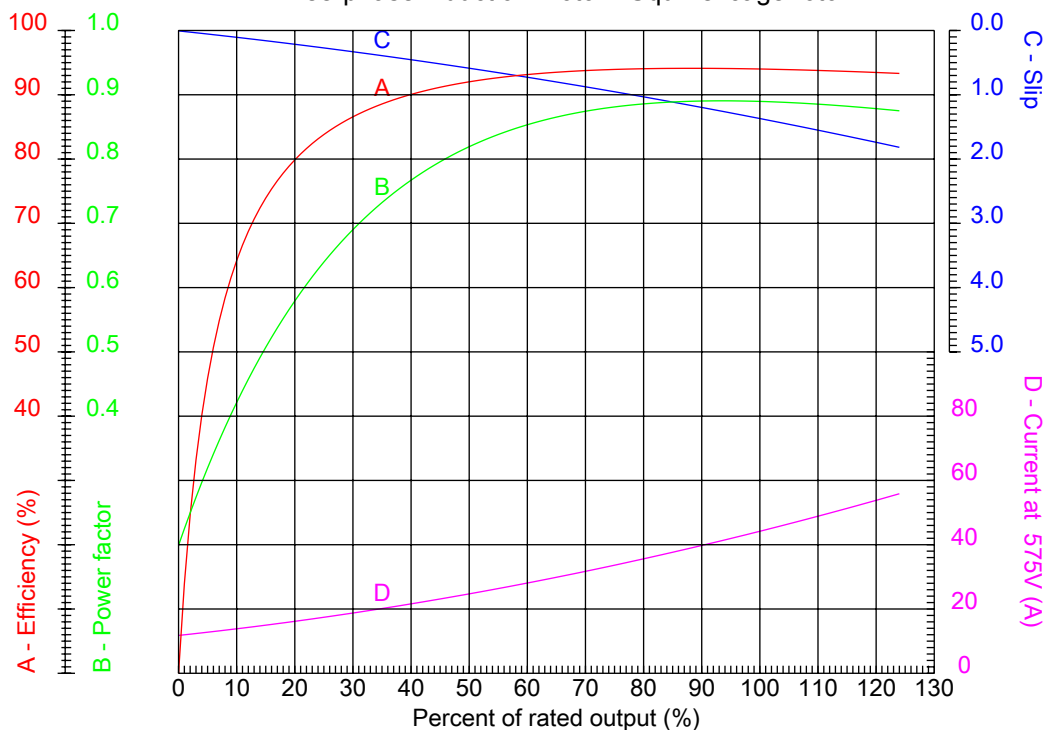
Dealers Industrial Equipment

No.:

Date: 27-SEP-2016

PERFORMANCE CURVES RELATED TO RATED OUTPUT

Three-phase induction motor - Squirrel cage rotor



Customer :
Product line : Three-Phase : Explosion Proof - NEMA Premium

Frame : 326TS	Locked rotor current (I _L /I _n) : 7.2
Output : 50 HP	Duty cycle : S1
Frequency : 60 Hz	Service factor : 1.15
Full load speed : 3550 rpm	Design : B
Voltage : 575 V	Locked rotor torque : 210 %
Rated current : 44.4 A	Breakdown torque : 210 %
Insulation class : F	

Notes:
Downloaded from <http://dealerselectric.com>
Generated for Model #05036XT3H326TS

Performed by

Checked



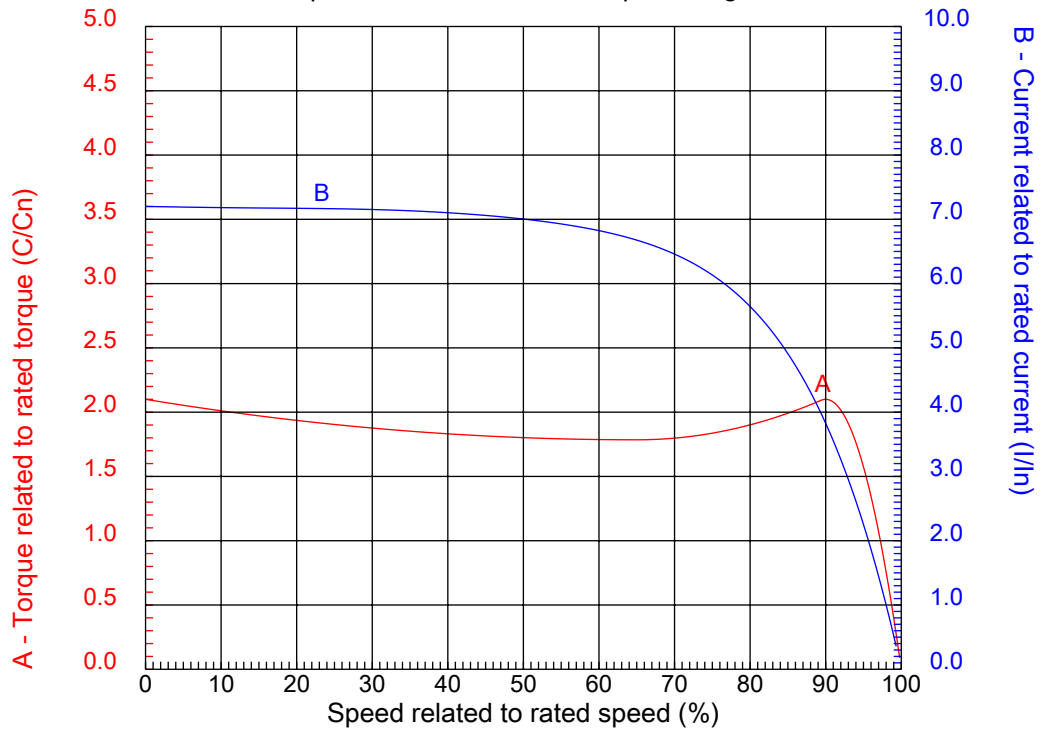
Dealers Industrial Equipment

No.:

Date: 27-SEP-2016

CHARACTERISTIC CURVES RELATED TO SPEED

Three-phase induction motor - Squirrel cage rotor



Customer :
Product line : Three-Phase : Explosion Proof - NEMA Premium

Frame	: 326TS	Locked rotor current (I _L /I _n)	: 7.2
Output	: 50 HP	Duty cycle	: S1
Frequency	: 60 Hz	Service factor	: 1.15
Full load speed	: 3550 rpm	Design	: B
Voltage	: 575 V	Locked rotor torque	: 210 %
Rated current	: 44.4 A	Breakdown torque	: 210 %
Insulation class	: F		

Notes:
Downloaded from <http://dealerselectric.com>
Generated for Model #05036XT3H326TS

Performed by

Checked

1 2 3 4 5 6 7 8

A

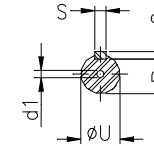
B

C

D

E

F



Notes: Downloaded from <http://dealerselectric.com>
Generated for Model #05036XT3H326TS

Performed by:

Checked:

Customer:

Three-Phase : Explosion Proof - NEMA Premium

Three-phase induction motor
Frame 326TS - IP55

27-SEP-2016



2E 12.500	A 15.157	2F 12.000	B 14.567	BA 5.250
J 3.228	K 3.346	P 15.697	ES 2.756	depth 0.500
S 0.500	N-W 3.750	U 1.875	R 1.594	AB 12.961
D 8.000	G 1.307	O 15.992	T 2.795	H 0.657
C 29.606	AA NPT 2"	d1 A 4	d2 A 4	

1 2 3 4 5 6 7 8

A
B
C
D
E
F

RUN



ONLY FOR START



Notes: Downloaded from http://dealerselectric.com Generated for Model #05036XT3H326TS		
Performed by:		
Checked:		
Customer:		
Three-Phase : Explosion Proof - NEMA Premium		
Three-phase induction motor Frame 326TS - IP55	27-SEP-2016	