



Dealers Industrial Equipment

No.:

Date: 23-SEP-2016

Customer :

TECHNICAL PROPOSAL

Three-phase induction motor - Squirrel cage rotor

Product line : Three-Phase : Explosion Proof - NEMA Premium

Catalog Number : 04012XT3E364T

List Price : \$10,576

Notes:

Downloaded from <http://dealerselectric.com>

Generated for Model #04012XT3E364T

Performed by:

Checked:



Dealers Industrial Equipment

No.:

Date: 23-SEP-2016

DATA SHEET

Three-phase induction motor - Squirrel cage rotor

Customer :
Product line : Three-Phase : Explosion Proof - NEMA Premium

Frame : 364/5T
Output : 40 HP
Frequency : 60 Hz
Poles : 6
Full load speed : 1185 rpm
Slip : 1.25 %
Voltage : 208-230/460 V
Rated current : 104-94.2/47.1 A
Locked rotor current : 659/330 A
Locked rotor current (I_L/I_N) : 7.0
No-load current : 35.0/17.5 A
Full load torque : 175 lb.ft
Locked rotor torque : 230 %
Breakdown torque : 230 %
Design : B
Insulation class : F
Temperature rise : 80 K
Locked rotor time : 24 s (hot)
Service factor : 1.15
Duty cycle : S1
Ambient temperature : -20°C - +40°C
Altitude : 1000 m
Degree of Protection : IP55
Approximate weight : 1010 lb
Moment of inertia : 29.040 sq.ft.lb
Noise level : 65 dB(A)

	D.E.	N.D.E.
Bearings	6314 C3	6314 C3
Regreasing interval	14267 h	14267 h
Grease amount	27 g	27 g

Load	Power factor	Efficiency (%)
100%	0.85	94.1
75%	0.80	94.1
50%	0.72	93.6

Notes:

Downloaded from <http://dealerselectric.com>
Generated for Model #04012XT3E364T

Performed by

Checked



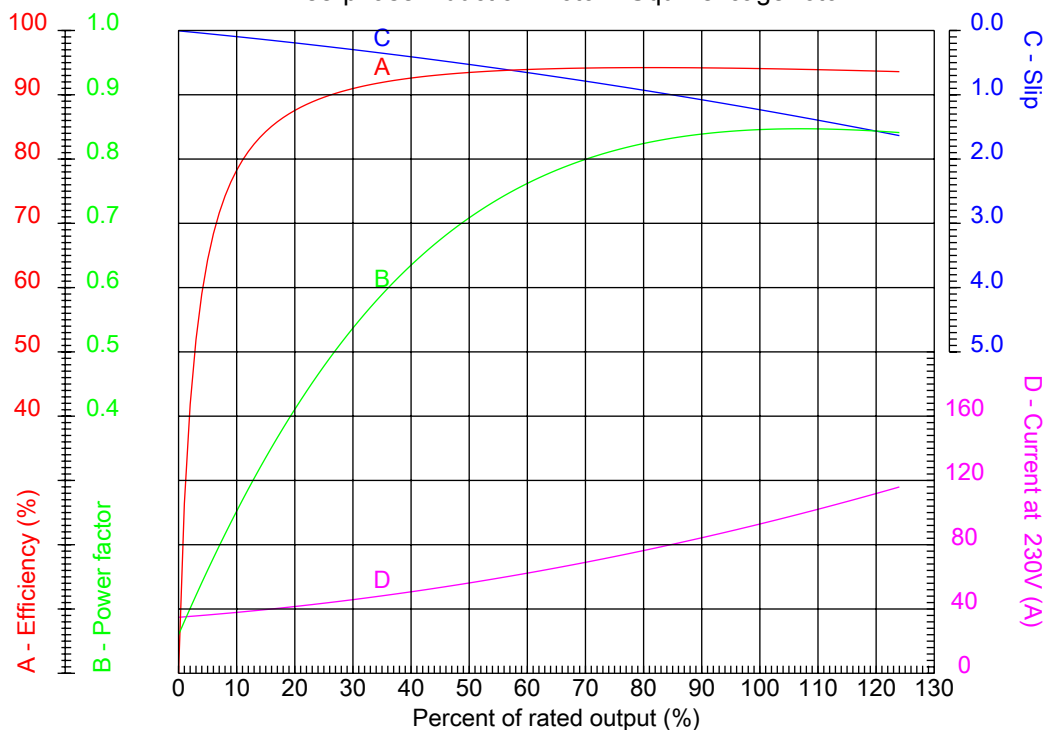
Dealers Industrial Equipment

No.:

Date: 23-SEP-2016

PERFORMANCE CURVES RELATED TO RATED OUTPUT

Three-phase induction motor - Squirrel cage rotor



Customer :
Product line : Three-Phase : Explosion Proof - NEMA Premium

Frame	: 364/5T	Locked rotor current (I _L /I _n)	: 7.0
Output	: 40 HP	Duty cycle	: S1
Frequency	: 60 Hz	Service factor	: 1.15
Full load speed	: 1185 rpm	Design	: B
Voltage	: 208-230/460 V	Locked rotor torque	: 230 %
Rated current	: 104-94.2/47.1 A	Breakdown torque	: 230 %
Insulation class	: F		

Notes:
Downloaded from <http://dealerselectric.com>
Generated for Model #04012XT3E364T

Performed by

Checked



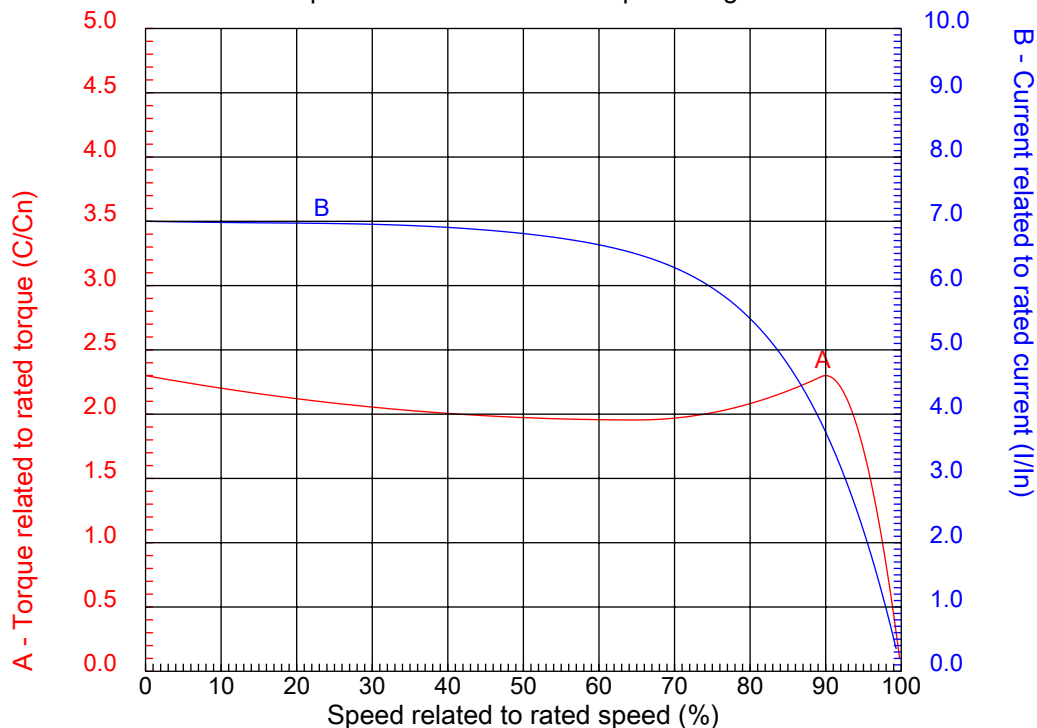
Dealers Industrial Equipment

No.:

Date: 23-SEP-2016

CHARACTERISTIC CURVES RELATED TO SPEED

Three-phase induction motor - Squirrel cage rotor



Customer :
Product line : Three-Phase : Explosion Proof - NEMA Premium

Frame	: 364/5T	Locked rotor current (I _L /I _n)	: 7.0
Output	: 40 HP	Duty cycle	: S1
Frequency	: 60 Hz	Service factor	: 1.15
Full load speed	: 1185 rpm	Design	: B
Voltage	: 208-230/460 V	Locked rotor torque	: 230 %
Rated current	: 104-94.2/47.1 A	Breakdown torque	: 230 %
Insulation class	: F		

Notes:
Downloaded from <http://dealerselectric.com>
Generated for Model #04012XT3E364T

Performed by

Checked

1 2 3 4 5 6 7 8

A

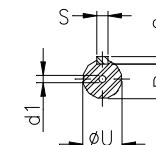
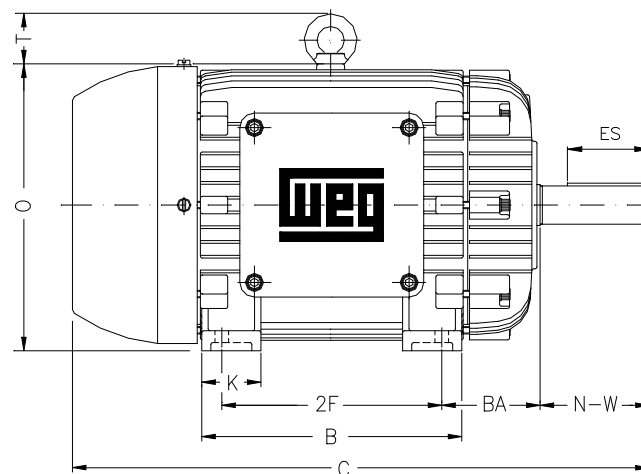
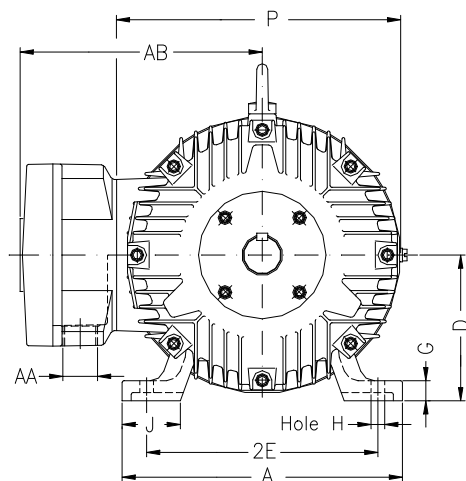
B

C

D

E

F



Notes: Downloaded from <http://dealerselectric.com>
Generated for Model #04012XT3E364T

Performed by:

Checked:

Customer:

Three-Phase : Explosion Proof - NEMA Premium

Three-phase induction motor
Frame 364/5T - IP55

23-SEP-2016



2E
14.000

A
17.165

2F
11.250/12.250

B
15.394

BA
5.875

J
3.150

K
4.134

P
18.583

ES
4.330

depth
0.625

S
0.625

N-W
5.874

U
2.375

R
2.019

AB
16.654

D
9.000

G
1.480

O
18.898

T
2.795

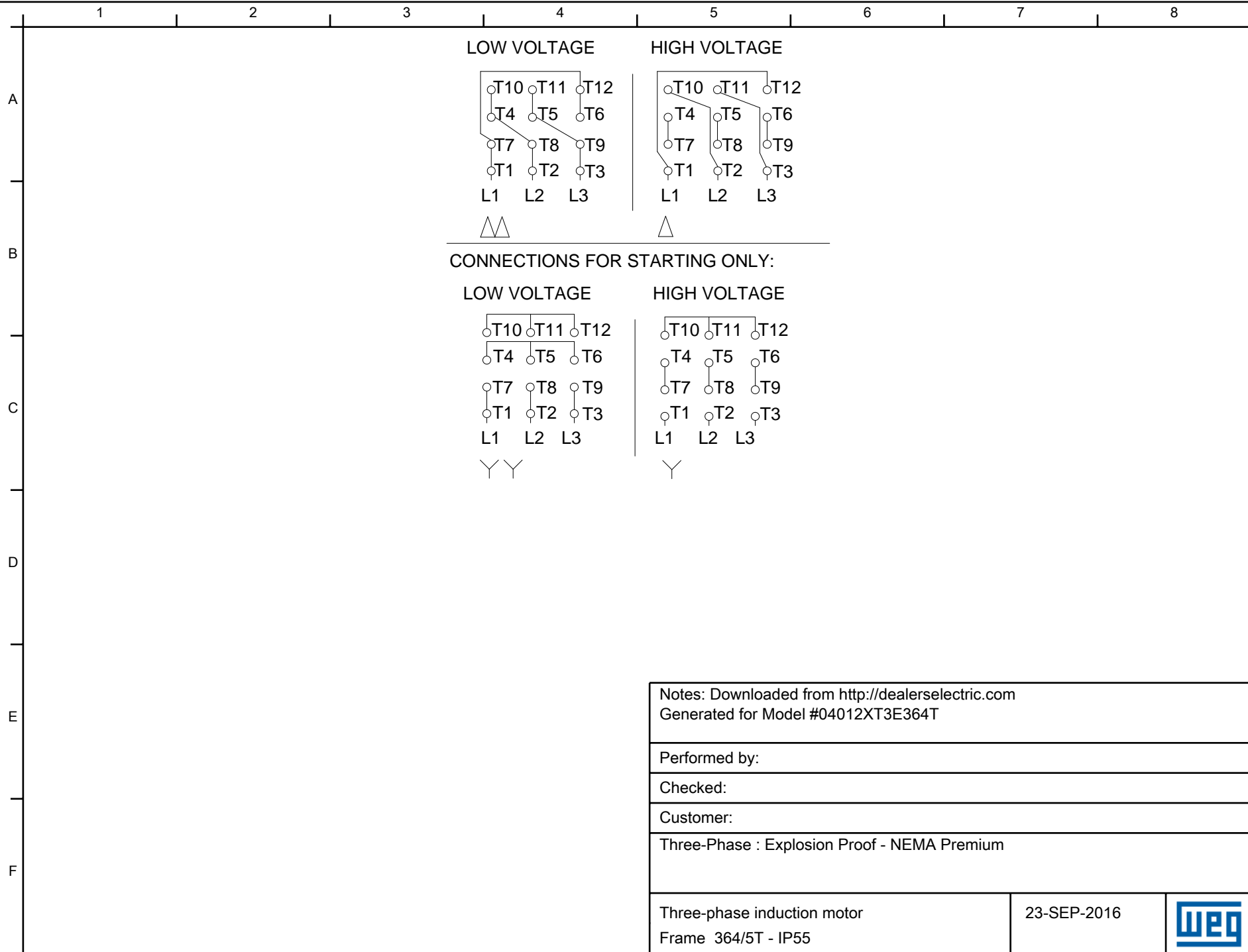
H
0.657

C
33.701

AA
NPT 3"

d1
DUNC 3/4"-10

d2
DUNC 3/4"-10



Notes: Downloaded from http://dealerselectric.com Generated for Model #04012XT3E364T		
Performed by:		
Checked:		
Customer:		
Three-Phase : Explosion Proof - NEMA Premium		
Three-phase induction motor Frame 364/5T - IP55	23-SEP-2016	