



Dealers Industrial Equipment

No.:

Date: 23-SEP-2016

Customer :

TECHNICAL PROPOSAL

Three-phase induction motor - Squirrel cage rotor

Product line : Close Coupled Pump: Three-Phase - W22 "JM" Type - TEFC - NEMA Premium

Catalog Number : 04012ET3E364JM-W22

List Price : \$8,807

Notes:

Downloaded from <http://dealerselectric.com>

Generated for Model #04012ET3E364JM-W22

Performed by:

Checked:



# Dealers Industrial Equipment

No.:

Date: 23-SEP-2016

## DATA SHEET Three-phase induction motor - Squirrel cage rotor

Customer :  
 Product line : Close Coupled Pump: Three-Phase - W22 "JM" Type - TEFC - NEMA Premium

Frame : 364/5JM  
 Output : 40 HP  
 Frequency : 60 Hz  
 Poles : 6  
 Full load speed : 1185 rpm  
 Slip : 1.25 %  
 Voltage : 208-230/460 V  
 Rated current : 103-93.0/46.5 A  
 Locked rotor current : 595/298 A  
 Locked rotor current (I<sub>L</sub>/I<sub>n</sub>) : 6.4  
 No-load current : 34.0/17.0 A  
 Full load torque : 175 lb.ft  
 Locked rotor torque : 200 %  
 Breakdown torque : 240 %  
 Design : B  
 Insulation class : F  
 Temperature rise : 80 K  
 Locked rotor time : 21 s (hot)  
 Service factor : 1.25  
 Duty cycle : S1  
 Ambient temperature : -20°C - +40°C  
 Altitude : 1000 m  
 Degree of Protection : IP55  
 Approximate weight : 833 lb  
 Moment of inertia : 29.040 sq.ft.lb  
 Noise level : 66 dB(A)

|                     | D.E.    | N.D.E.  | Load | Power factor | Efficiency (%) |
|---------------------|---------|---------|------|--------------|----------------|
| Bearings            | 6314 C3 | 6314 C3 | 100% | 0.86         | 94.1           |
| Regreasing interval | 17000 h | 17000 h | 75%  | 0.82         | 93.6           |
| Grease amount       | 27 g    | 27 g    | 50%  | 0.73         | 93.6           |

Notes:  
 Downloaded from <http://dealerselectric.com>  
 Generated for Model #04012ET3E364JM-W22

Performed by

Checked



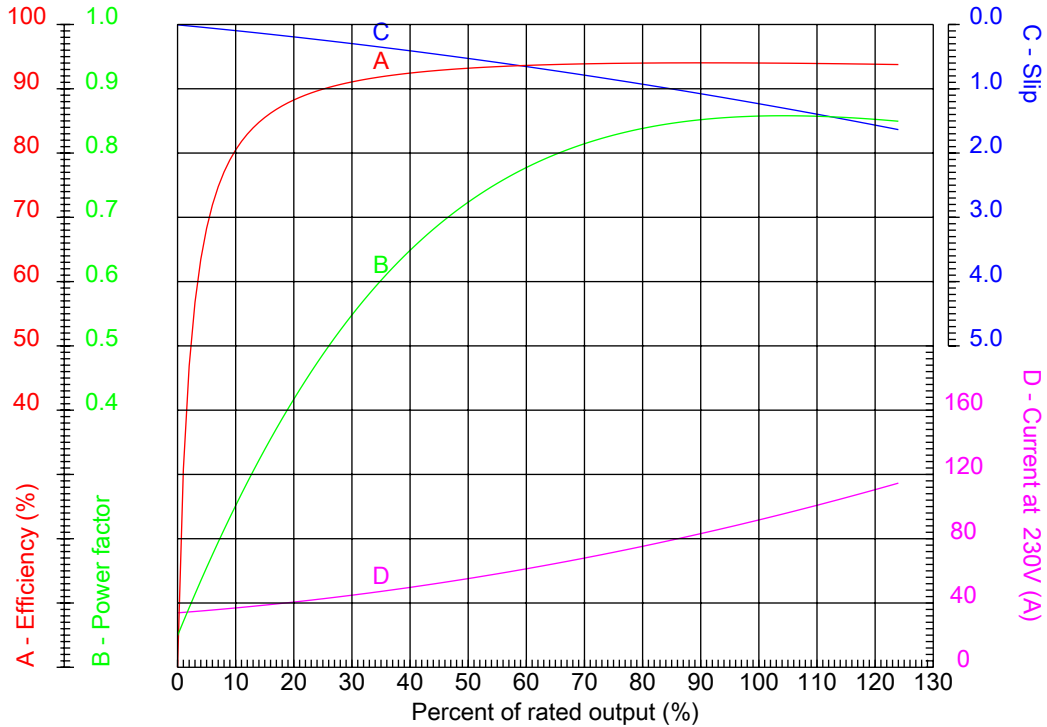
# Dealers Industrial Equipment

No.:

Date: 23-SEP-2016

## PERFORMANCE CURVES RELATED TO RATED OUTPUT

Three-phase induction motor - Squirrel cage rotor



Customer :  
 Product line : Close Coupled Pump: Three-Phase - W22 "JM" Type - TEFC - NEMA Premium

|                  |                   |  |         |
|------------------|-------------------|--|---------|
| Frame            | : 364/5JM         | Locked rotor current (I <sub>l</sub> /I <sub>n</sub> ) | : 6.4   |
| Output           | : 40 HP           | Duty cycle   | : S1    |
| Frequency        | : 60 Hz           | Service factor   | : 1.25  |
| Full load speed  | : 1185 rpm        | Design   | : B     |
| Voltage          | : 208-230/460 V   | Locked rotor torque                                    | : 200 % |
| Rated current    | : 103-93.0/46.5 A | Breakdown torque                                       | : 240 % |
| Insulation class | : F               |  |         |

Notes:  
 Downloaded from <http://dealerselectric.com>  
 Generated for Model #04012ET3E364JM-W22

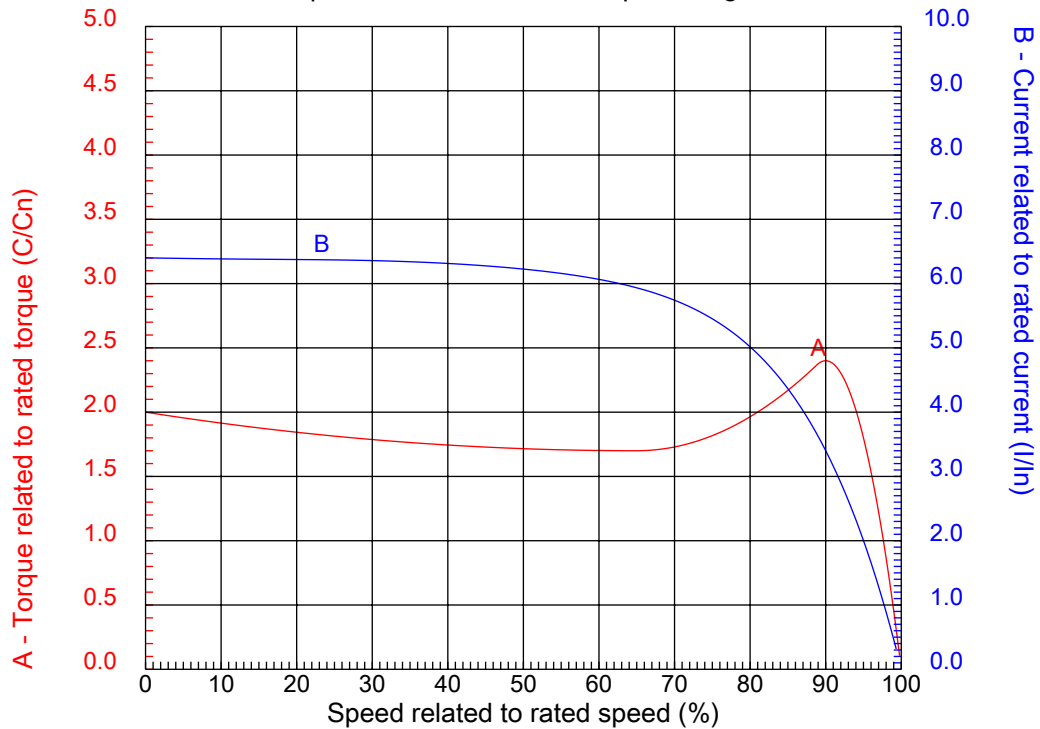
Performed by

Checked



## CHARACTERISTIC CURVES RELATED TO SPEED

Three-phase induction motor - Squirrel cage rotor



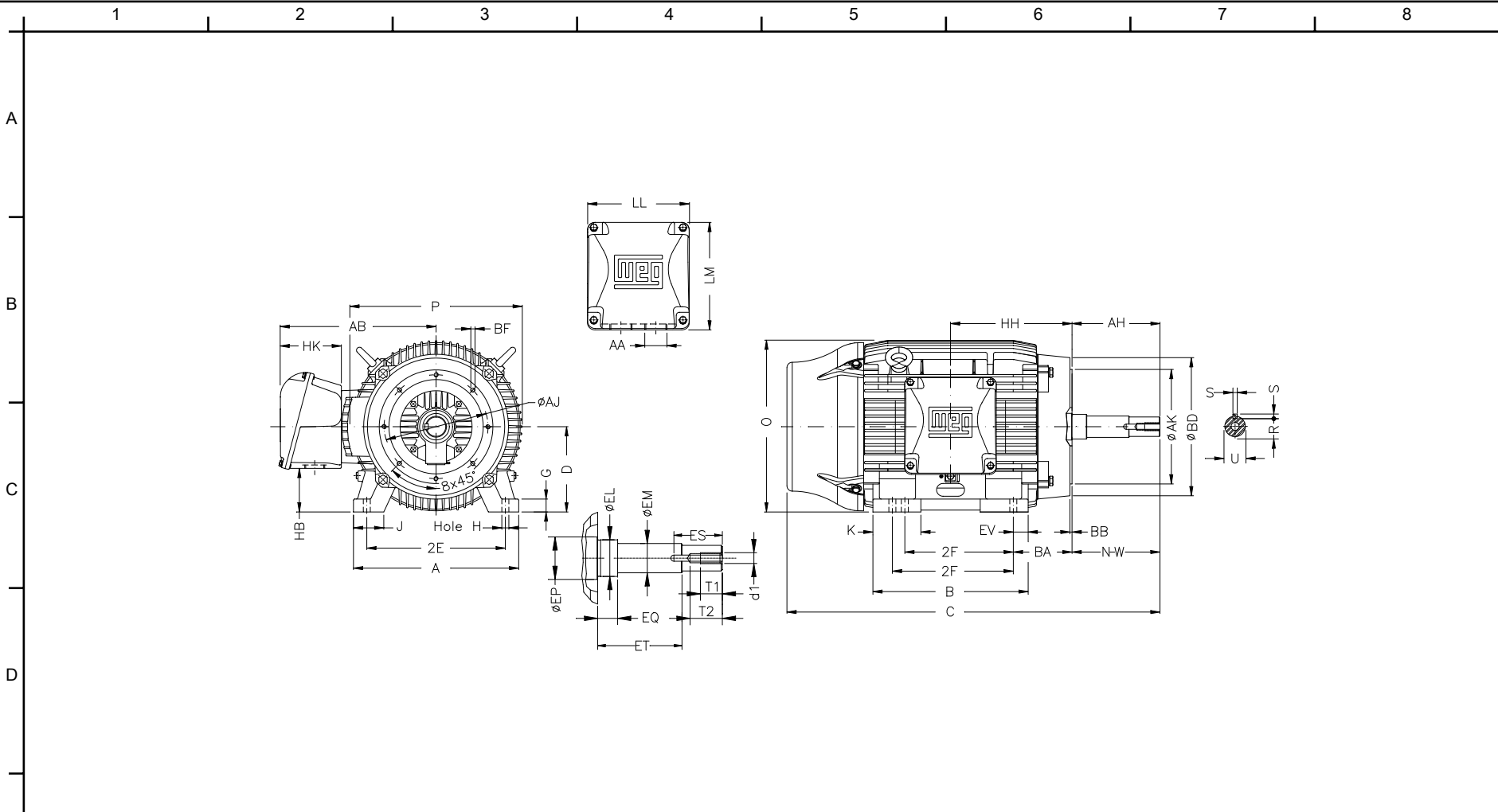
Customer :  
Product line : Close Coupled Pump: Three-Phase - W22 "JM" Type - TEFC - NEMA Premium

|                  |                   |  |         |
|------------------|-------------------|--|---------|
| Frame            | : 364/5JM         | Locked rotor current (I <sub>l</sub> /I <sub>n</sub> ) | : 6.4   |
| Output           | : 40 HP           | Duty cycle   | : S1    |
| Frequency        | : 60 Hz           | Service factor   | : 1.25  |
| Full load speed  | : 1185 rpm        | Design   | : B     |
| Voltage          | : 208-230/460 V   | Locked rotor torque                                    | : 200 % |
| Rated current    | : 103-93.0/46.5 A | Breakdown torque                                       | : 240 % |
| Insulation class | : F               |  |         |

Notes:  
Downloaded from <http://dealerselectric.com>  
Generated for Model #04012ET3E364JM-W22

Performed by

Checked



Notes: Downloaded from <http://dealerselectric.com>  
 Generated for Model #04012ET3E364JM-W22

|   |                     |                   |                  |              |                    |
|---|---------------------|-------------------|------------------|--------------|--------------------|
| E | 2E<br>14.016        | J<br>3.150        | A<br>17.165      | P<br>17.914  | AB<br>16.016       |
|   | 2F<br>11.260/12.244 | K<br>4.138        | B<br>16.220      | BA<br>5.875  | D<br>9.000         |
|   | G<br>1.480          | O<br>17.716       | H<br>0.660       | AA<br>NPT 3" | EQ<br>0.630        |
|   | ET<br>3.006         | U<br>1.249        | EM<br>1.375      | EL<br>1.750  | EP<br>2.756        |
|   | ES<br>2.480         | t1<br>0.984       | t2<br>1.496      | C<br>33.031  | d1<br>EUNC 1/2"-13 |
| F | HH<br>11.988        | HK<br>6.024       | HB<br>4.251      | LL<br>10.591 | LM<br>11.267       |
|   | S<br>0.250          | R<br>1.110        | Flange<br>FC-279 | AJ<br>11.000 | AK<br>12.500       |
|   | BD<br>15.562        | BF<br>UNC 5/8"x11 | BB<br>0.248      | AH<br>5.250  |                    |

Performed by:

Checked:

Customer:

Close Coupled Pump: Three-Phase - W22 "JM" Type - TEFC - NEMA Premium

Three-phase induction motor  
 Frame 364/5JM - IP55

23-SEP-2016



1 2 3 4 5 6 7 8

A  
B  
C  
D  
E  
F

LOW VOLTAGE

HIGH VOLTAGE



CONNECTIONS FOR STARTING ONLY:

LOW VOLTAGE

HIGH VOLTAGE



Notes: Downloaded from <http://dealerselectric.com>  
Generated for Model #04012ET3E364JM-W22

Performed by:

Checked:

Customer:

Close Coupled Pump: Three-Phase - W22 "JM" Type - TEFC - NEMA Premium

Three-phase induction motor  
Frame 364/5JM - IP55

23-SEP-2016

