



Dealers Industrial Equipment

No.:

Date: 23-SEP-2016

Customer :

TECHNICAL PROPOSAL

## Three-phase induction motor - Squirrel cage rotor

Product line : W22 High Efficiency

Catalog Number : 02009EP3E324T-W22

List Price : \$5,277

Notes:

Downloaded from <http://dealerselectric.com>

Generated for Model #02009EP3E324T-W22

Performed by:

Checked:



# Dealers Industrial Equipment

No.:

Date: 23-SEP-2016

## DATA SHEET Three-phase induction motor - Squirrel cage rotor

Customer :  
Product line : W22 High Efficiency

Frame : 324T  
Output : 20 HP  
Frequency : 60 Hz  
Poles : 8  
Full load speed : 880 rpm  
Slip : 2.22 %  
Voltage : 230/460 V  
Rated current : 56.8/28.4 A  
Locked rotor current : 284/142 A  
Locked rotor current (I<sub>L</sub>/I<sub>n</sub>) : 5.0  
No-load current : 30.0/15.0 A  
Full load torque : 118 lb.ft  
Locked rotor torque : 200 %  
Breakdown torque : 220 %  
Design : B  
Insulation class : F  
Temperature rise : 80 K  
Locked rotor time : 24 s (hot)  
Service factor : 1.25  
Duty cycle : S1  
Ambient temperature : -20°C - +40°C  
Altitude : 1000 m  
Degree of Protection : IP55  
Approximate weight : 452 lb  
Moment of inertia : 9.7905 sq.ft.lb  
Noise level : 56 dB(A)

	D.E.	N.D.E.
Bearings	6312 C3	6212 C3
Regreasing interval	20000 h	20000 h
Grease amount	21 g	13 g

Load	Power factor	Efficiency (%)
100%	0.74	89.5
75%	0.67	89.5
50%	0.55	87.5

Notes:  
Downloaded from <http://dealerselectric.com>  
Generated for Model #02009EP3E324T-W22

Performed by

Checked



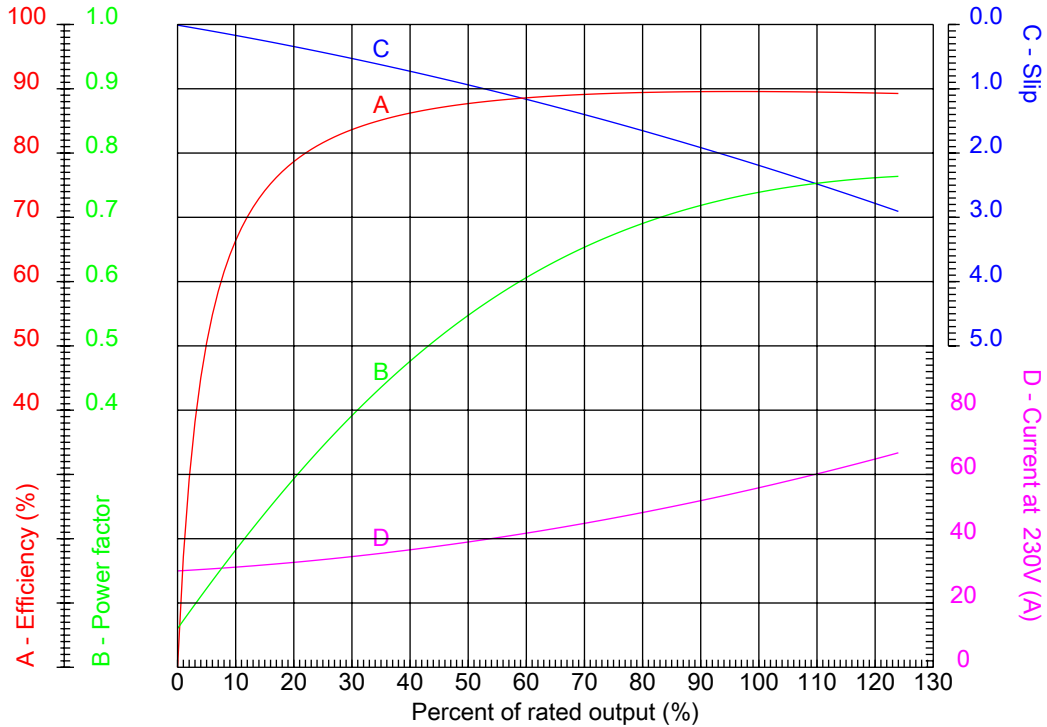
# Dealers Industrial Equipment

No.:

Date: 23-SEP-2016

## PERFORMANCE CURVES RELATED TO RATED OUTPUT

Three-phase induction motor - Squirrel cage rotor



Customer :  
Product line : W22 High Efficiency

Frame : 324T	Locked rotor current (I <sub>l</sub> /I <sub>n</sub> ) : 5.0
Output : 20 HP	Duty cycle : S1
Frequency : 60 Hz	Service factor : 1.25
Full load speed : 880 rpm	Design : B
Voltage : 230/460 V	Locked rotor torque : 200 %
Rated current : 56.8/28.4 A	Breakdown torque : 220 %
Insulation class : F	

Notes:  
Downloaded from <http://dealerselectric.com>  
Generated for Model #02009EP3E324T-W22

Performed by

Checked



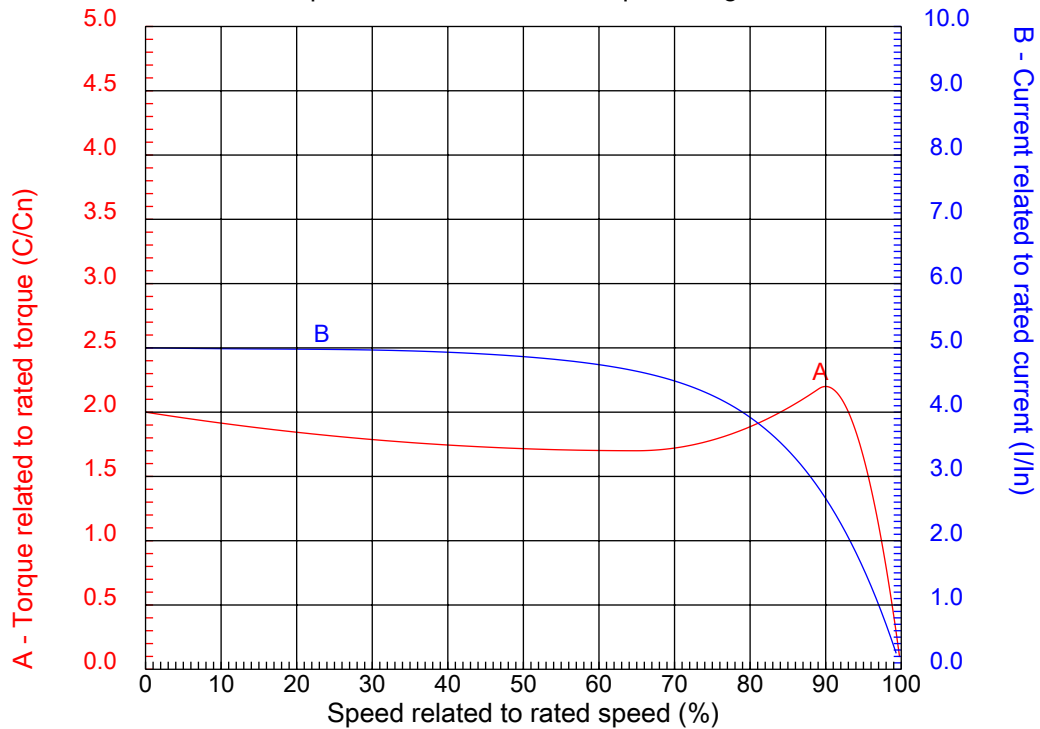
# Dealers Industrial Equipment

No.:

Date: 23-SEP-2016

## CHARACTERISTIC CURVES RELATED TO SPEED

Three-phase induction motor - Squirrel cage rotor



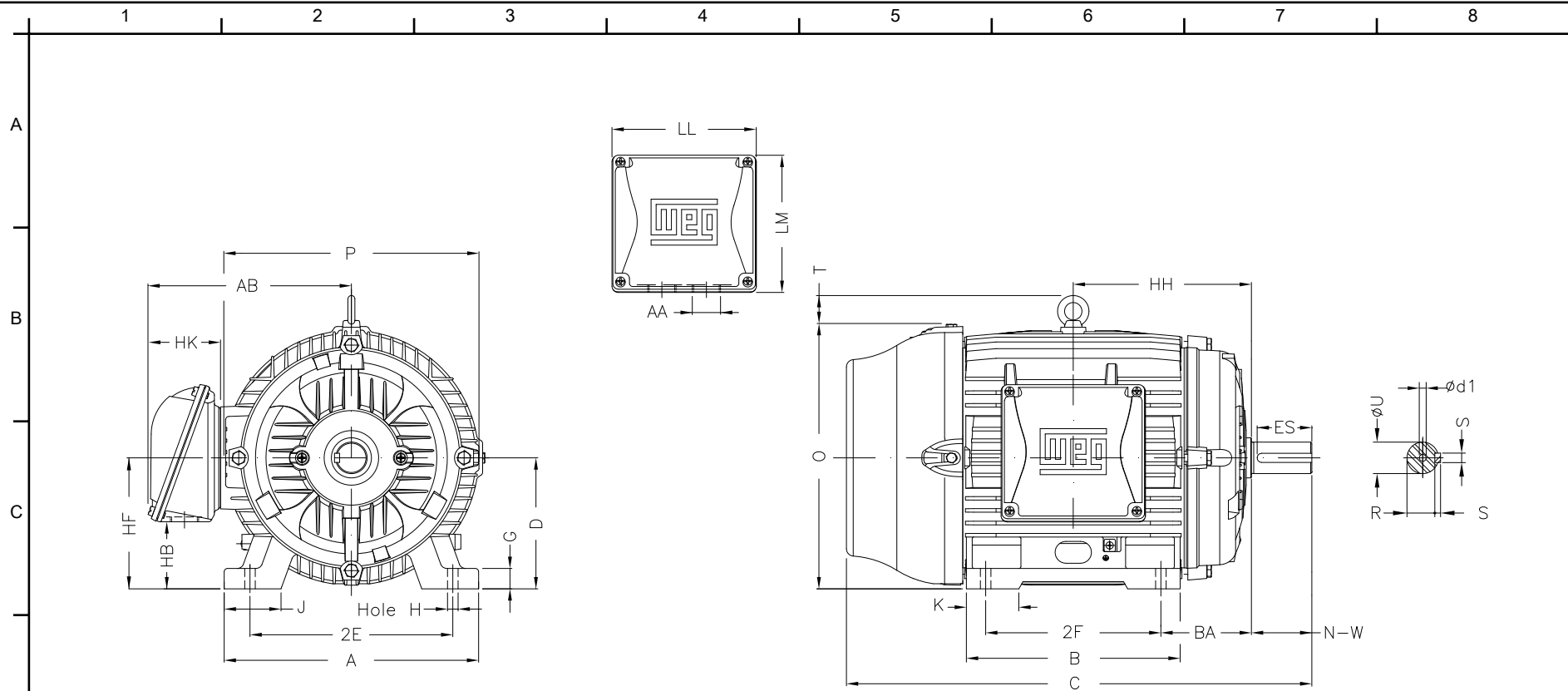
Customer :  
Product line : W22 High Efficiency

Frame	: 324T	Locked rotor current (I <sub>l</sub> /I <sub>n</sub> )	: 5.0
Output	: 20 HP	Duty cycle	: S1
Frequency	: 60 Hz	Service factor	: 1.25
Full load speed	: 880 rpm	Design	: B
Voltage	: 230/460 V	Locked rotor torque	: 200 %
Rated current	: 56.8/28.4 A	Breakdown torque	: 220 %
Insulation class	: F		

Notes:  
Downloaded from <http://dealerselectric.com>  
Generated for Model #02009EP3E324T-W22

Performed by

Checked



Notes: Downloaded from <http://dealerselectric.com>  
 Generated for Model #02009EP3E324T-W22

Performed by:

Checked:

Customer:

W22 High Efficiency

Three-phase induction motor  
 Frame 324T - IP55

23-SEP-2016



	2E 12.500	J 3.189	A 15.157	P 15.827	AB 12.575
	2F 10.500	K 4.055	B 13.071	BA 5.250	FBA 8.738
	U 2.125	N-W 5.250	ES 3.937	S 0.500	R 1.844
F	depth 0.500	D 8.000	G 1.300	HB 4.811	O 15.953
	T 2.441	HF 8.708	HH 10.500	HK 4.705	H 0.657
	C 29.620	LL 9.055	LM 8.661	AA NPT 2"	d1 A 4

1 2 3 4 5 6 7 8

A  
B  
C  
D  
E  
F

LOW VOLTAGE

HIGH VOLTAGE



CONNECTIONS FOR STARTING ONLY:

LOW VOLTAGE

HIGH VOLTAGE



Notes: Downloaded from <http://dealerselectric.com>  
Generated for Model #02009EP3E324T-W22

Performed by:

Checked:

Customer:

W22 High Efficiency

Three-phase induction motor  
Frame 324T - IP55

23-SEP-2016

