



Dealers Industrial Equipment

No.:

Date: 13-SEP-2016

Customer :

TECHNICAL PROPOSAL

## Single-phase induction motor - Squirrel cage rotor

Product line : Single-Phase : NEMA 48 & 56 ODP - Start Capacitor

Catalog Number : 00336OS1BG56C

List Price : \$496

Notes:

Downloaded from <http://dealerselectric.com>

Generated for Model #00336OS1BG56C

Performed by:

Checked:



# Dealers Industrial Equipment

No.:

Date: 13-SEP-2016

## DATA SHEET Single-phase induction motor - Squirrel cage rotor

Customer :  
 Product line : Single-Phase : NEMA 48 & 56 ODP - Start Capacitor

Frame : G56H  
 Output : 3 HP  
 Frequency : 60 Hz  
 Poles : 2  
 Full load speed : 3490 rpm  
 Slip : 3.06 %  
 Voltage : 230 V  
 Rated current : 15.5 A  
 Locked rotor current : 109 A  
 Locked rotor current (I<sub>L</sub>/I<sub>n</sub>) : 7.0  
 No-load current : 8.50 A  
 Full load torque : 4.45 lb.ft  
 Locked rotor torque : 230 %  
 Breakdown torque : 250 %  
 Design : ---  
 Insulation class : B  
 Temperature rise : 80 K  
 Locked rotor time : 6 s (hot)  
 Service factor : 1.00  
 Duty cycle : S1  
 Ambient temperature : -20°C - +40°C  
 Altitude : 1000 m  
 Degree of Protection : IP21  
 Approximate weight : 42 lb  
 Moment of inertia : 0.07214 sq.ft.lb  
 Noise level : ---

	D.E.	N.D.E.
Bearings	6204 ZZ	6203 ZZ
Regreasing interval	---	---
Grease amount	---	---

Load	Power factor	Efficiency (%)
100%	0.80	78.0
75%	0.73	78.0
50%	0.61	75.0

Notes:  
 Downloaded from <http://dealerselectric.com>  
 Generated for Model #00336OS1BG56C

Performed by

Checked



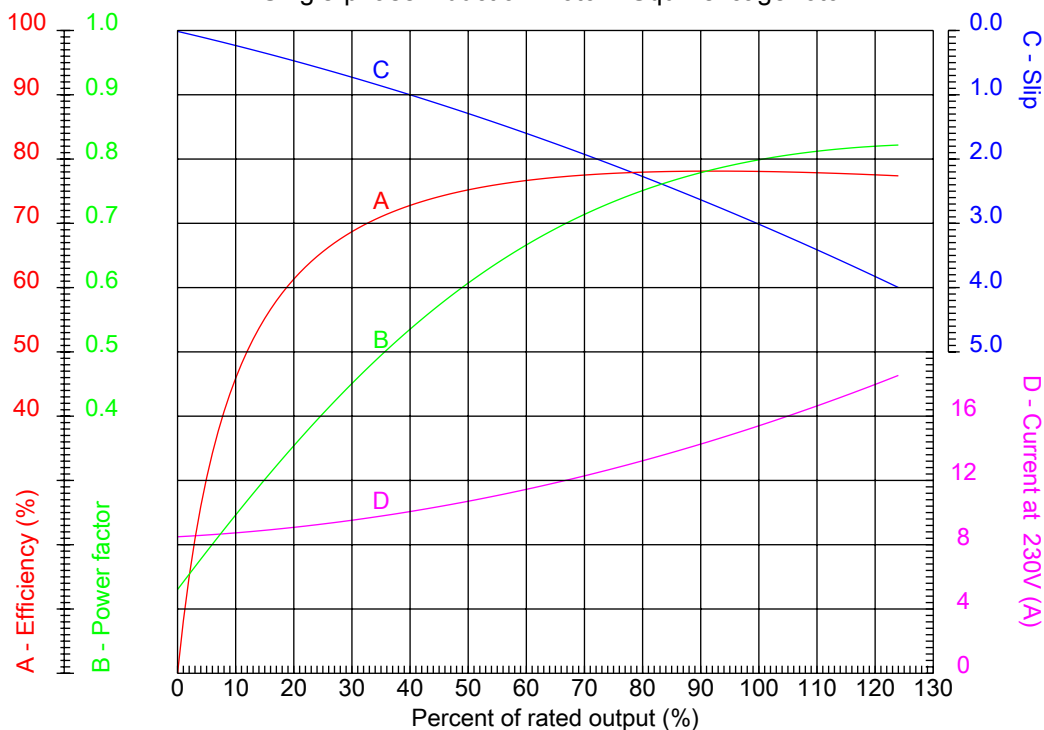
# Dealers Industrial Equipment

No.:

Date: 13-SEP-2016

## PERFORMANCE CURVES RELATED TO RATED OUTPUT

Single-phase induction motor - Squirrel cage rotor



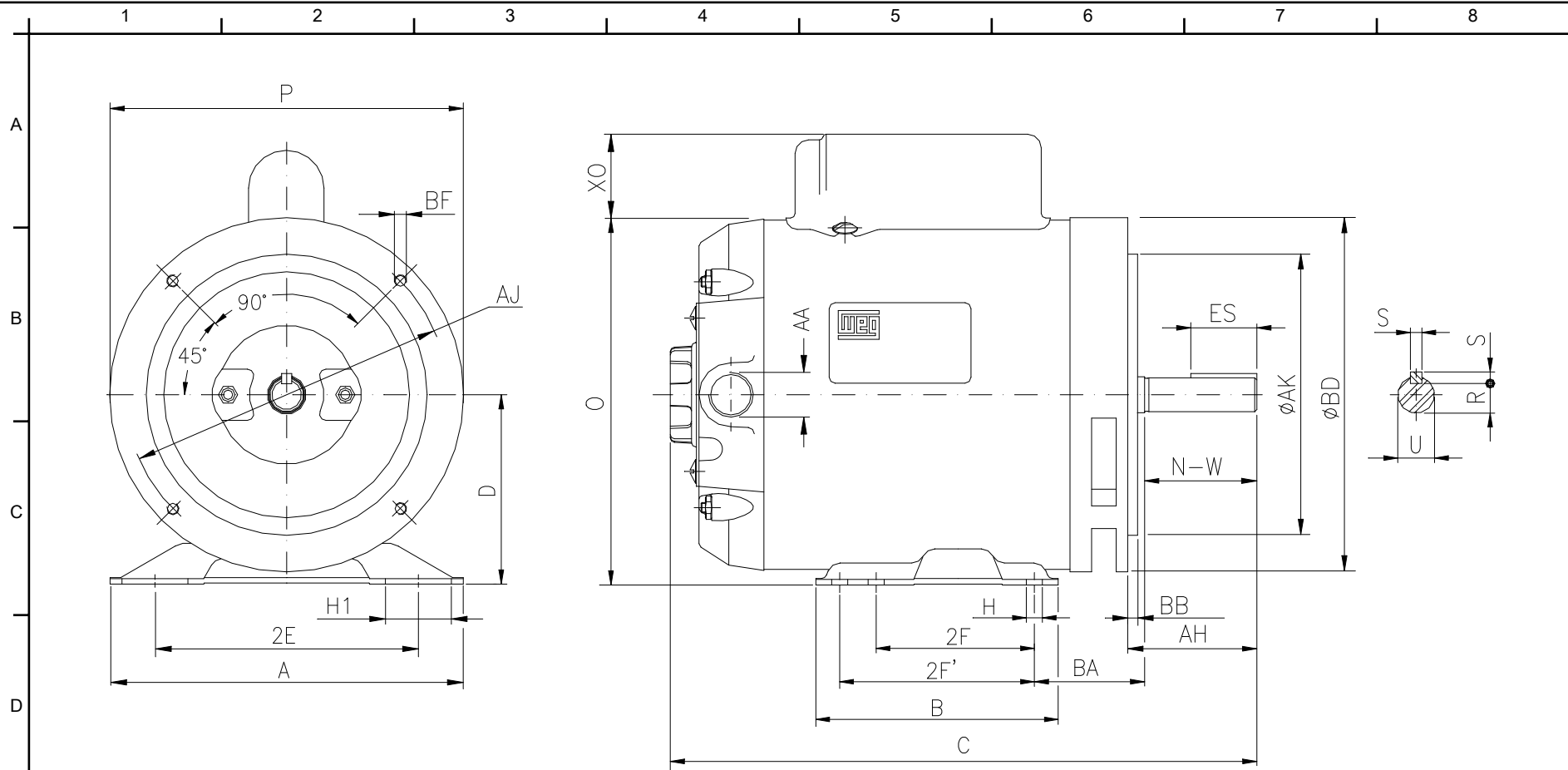
Customer :  
 Product line : Single-Phase : NEMA 48 & 56 ODP - Start Capacitor

Frame	: G56H	Locked rotor current (I <sub>l</sub> /I <sub>n</sub> )	: 7.0
Output	: 3 HP	Duty cycle	: S1
Frequency	: 60 Hz	Service factor	: 1.00
Full load speed	: 3490 rpm	Design	: ---
Voltage	: 230 V	Locked rotor torque	: 230 %
Rated current	: 15.5 A	Breakdown torque	: 250 %
Insulation class	: B		

Notes:  
 Downloaded from <http://dealerselectric.com>  
 Generated for Model #00336OS1BG56C

Performed by

Checked



Notes: Downloaded from <http://dealerselectric.com>  
 Generated for Model #00336OS1BG56C

Performed by:

Checked:

Customer:

Single-Phase : NEMA 48 & 56 ODP - Start Capacitor

2E	2F	H	H1	BA
4.874	3.000/5.000	0.342	1.220	2.750
A	B	C	D	O
6.535	6.496	13.858	3.500	6.732
XO	P	ES	S	N-W
0.000	6.457	1.102	0.187	1.874
U	R	AA	d1	AH
0.6250	0.517	NPT 1/2"	A 3.15	2.063
Flange	AJ	AK	BD	BF
FC-149	5.874	4.500	6.500	UNC 3/8"x16-2B
BB				
0.157				

Single-phase induction motor  
 Frame G56H - IP21

13-SEP-2016

