



# Dealers Industrial Equipment

No.:

Date: 12-SEP-2016

Customer :

## TECHNICAL PROPOSAL

### Three-phase induction motor - Squirrel cage rotor

Product line : Close Coupled Pump: Three-Phase - W01 (Rolled Steel) "JM" Type - TEFC - High Efficiency  
Catalog Number : 00336EP3H145JM-S  
List Price : \$647

#### Notes:

Downloaded from <http://dealerselectric.com>  
Generated for Model #00336EP3H145JM-S

Performed by:

Checked:



# Dealers Industrial Equipment

No.:

Date: 12-SEP-2016

## DATA SHEET Three-phase induction motor - Squirrel cage rotor

Customer :  
 Product line : Close Coupled Pump: Three-Phase - W01 (Rolled Steel) "JM" Type - TEFC - High Efficiency

Frame : 143/5JM  
 Output : 3 HP  
 Frequency : 60 Hz  
 Poles : 2  
 Full load speed : 3480 rpm  
 Slip : 3.33 %  
 Voltage : 575 V  
 Rated current : 2.84 A  
 Locked rotor current : 23.9 A  
 Locked rotor current (I<sub>L</sub>/I<sub>n</sub>) : 8.4  
 No-load current : 1.04 A  
 Full load torque : 4.47 lb.ft  
 Locked rotor torque : 270 %  
 Breakdown torque : 330 %  
 Design : A  
 Insulation class : F  
 Temperature rise : 80 K  
 Locked rotor time : 9 s (hot)  
 Service factor : 1.15  
 Duty cycle : S1  
 Ambient temperature : -20°C - +40°C  
 Altitude : 1000 m  
 Degree of Protection : IP55  
 Approximate weight : 44 lb  
 Moment of inertia : 0.14072 sq.ft.lb  
 Noise level : 68 dB(A)

|                     | D.E.    | N.D.E.  | Load | Power factor | Efficiency (%) |
|---------------------|---------|---------|------|--------------|----------------|
| Bearings            | 6206 ZZ | 6203 ZZ | 100% | 0.91         | 85.5           |
| Regreasing interval | ---     | ---     | 75%  | 0.87         | 85.5           |
| Grease amount       | ---     | ---     | 50%  | 0.78         | 84.0           |

Notes:  
 Downloaded from <http://dealerselectric.com>  
 Generated for Model #00336EP3H145JM-S

Performed by

Checked



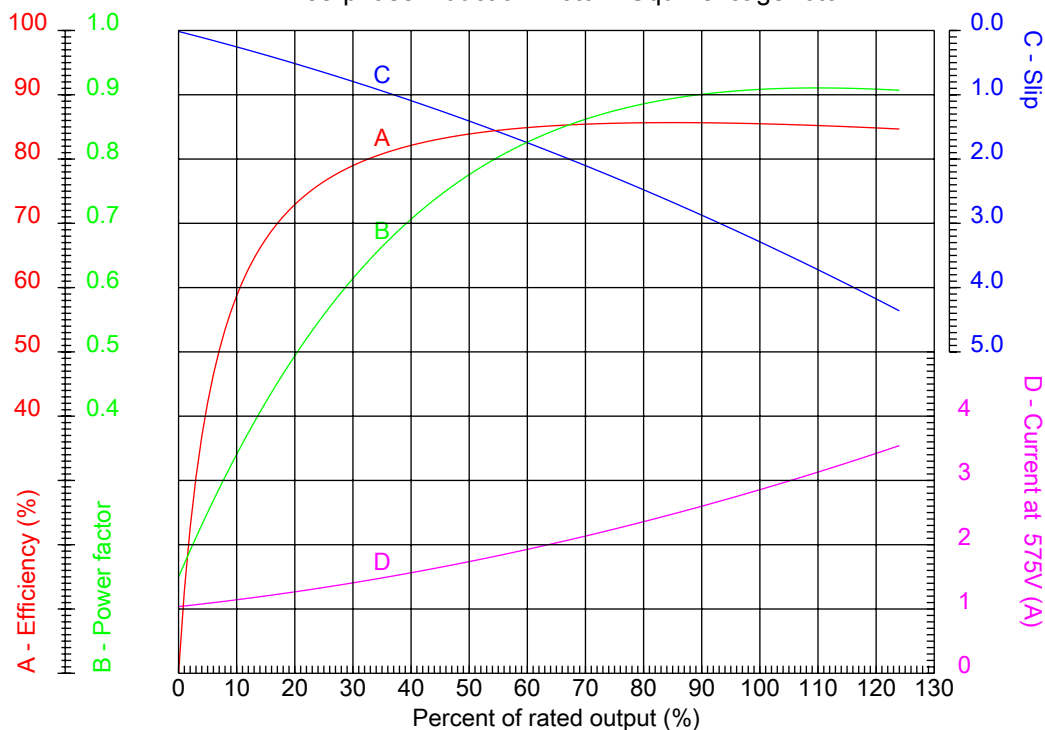
# Dealers Industrial Equipment

No.:

Date: 12-SEP-2016

## PERFORMANCE CURVES RELATED TO RATED OUTPUT

Three-phase induction motor - Squirrel cage rotor



Customer :  
Product line : Close Coupled Pump: Three-Phase - W01 (Rolled Steel) "JM" Type - TEFC - High Efficiency

|                  |            |  |         |
|------------------|------------|--|---------|
| Frame            | : 143/5JM  | Locked rotor current (I <sub>l</sub> /I <sub>n</sub> ) | : 8.4   |
| Output           | : 3 HP     | Duty cycle   | : S1    |
| Frequency        | : 60 Hz    | Service factor   | : 1.15  |
| Full load speed  | : 3480 rpm | Design   | : A     |
| Voltage          | : 575 V    | Locked rotor torque                                    | : 270 % |
| Rated current    | : 2.84 A   | Breakdown torque                                       | : 330 % |
| Insulation class | : F        |  |         |

Notes:  
Downloaded from <http://dealerselectric.com>  
Generated for Model #00336EP3H145JM-S

Performed by

Checked



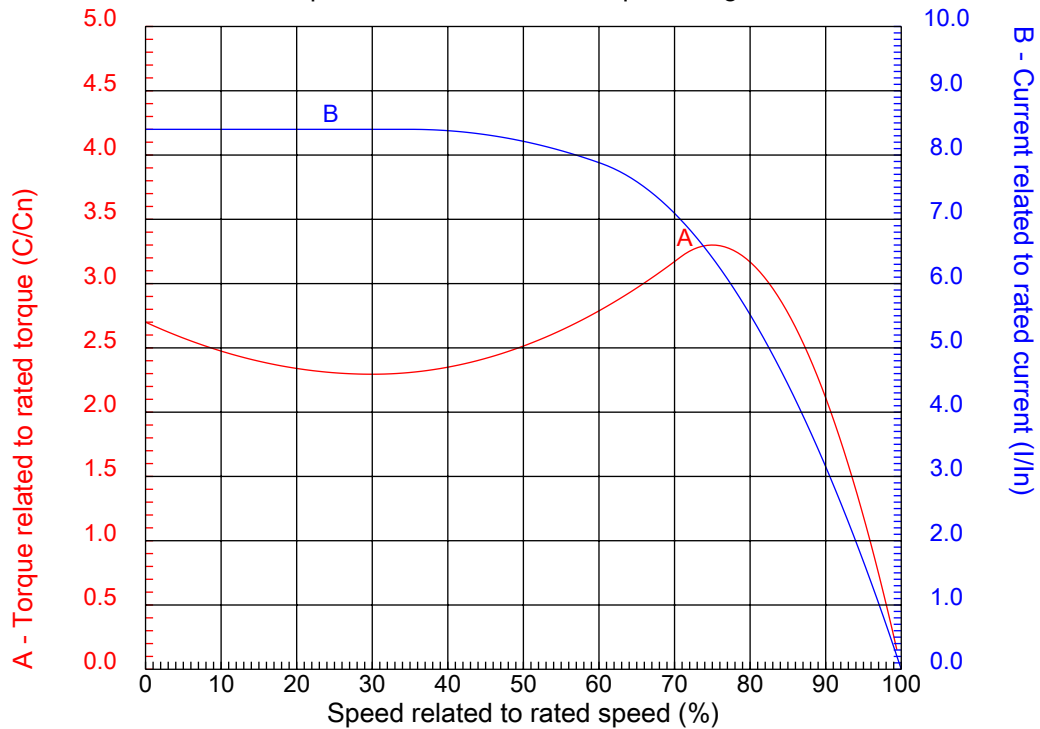
# Dealers Industrial Equipment

No.:

Date: 12-SEP-2016

## CHARACTERISTIC CURVES RELATED TO SPEED

Three-phase induction motor - Squirrel cage rotor



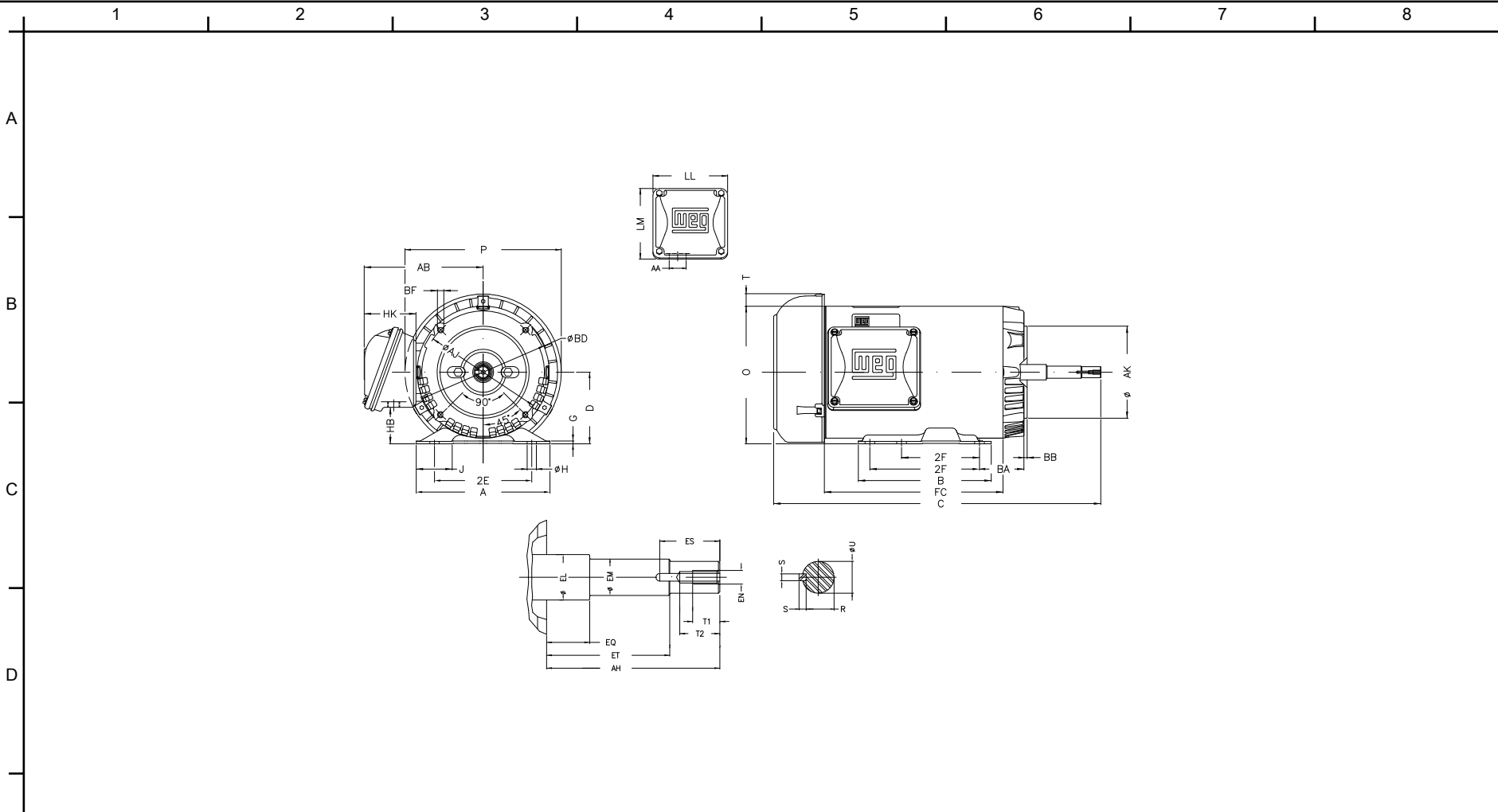
Customer :  
Product line : Close Coupled Pump: Three-Phase - W01 (Rolled Steel) "JM" Type - TEFC - High Efficiency

|                  |            |  |         |
|------------------|------------|--|---------|
| Frame            | : 143/5JM  | Locked rotor current (I <sub>l</sub> /I <sub>n</sub> ) | : 8.4   |
| Output           | : 3 HP     | Duty cycle   | : S1    |
| Frequency        | : 60 Hz    | Service factor   | : 1.15  |
| Full load speed  | : 3480 rpm | Design   | : A     |
| Voltage          | : 575 V    | Locked rotor torque                                    | : 270 % |
| Rated current    | : 2.84 A   | Breakdown torque                                       | : 330 % |
| Insulation class | : F        |  |         |

Notes:  
Downloaded from <http://dealerselectric.com>  
Generated for Model #00336EP3H145JM-S

Performed by

Checked



Notes: Downloaded from <http://dealerselectric.com>  
 Generated for Model #00336EP3H145JM-S

|                   |                   |                  |              |             |
|-------------------|-------------------|------------------|--------------|-------------|
| 2E<br>5.500       | J<br>1.732        | A<br>6.535       | P<br>7.638   | AB<br>5.873 |
| 2F<br>4.000/5.000 | B<br>6.496        | BA<br>2.750      | D<br>3.500   | G<br>0.120  |
| O<br>6.724        | T<br>0.603        | H<br>0.343       | AA<br>1.118" | ER<br>4.258 |
| EQ<br>0.630       | ET<br>2.880       | U<br>0.8745      | EM<br>1.000  | EL<br>1.156 |
| EP<br>1.179       | ES<br>1.575       | t1<br>0.787      | t2<br>1.102  | C<br>16.890 |
| CH<br>1.377       | FC<br>9.055       | Flange<br>FC-149 | AJ<br>5.874  | AK<br>4.500 |
| BD<br>6.450       | BF<br>UNC 3/8"x16 | BB<br>0.157      | AH<br>4.267  |             |

Performed by:


Checked:

Customer:

Close Coupled Pump: Three-Phase - W01 (Rolled Steel) "JM" Type - TEFC -

Three-phase induction motor  
 Frame 143/5JM - IP55

12-SEP-2016




1 2 3 4 5 6 7 8

A  
B  
C  
D  
E  
F

### RUN

### ONLY FOR START



|   |             |   |
|---|-------------|---|
| Notes: Downloaded from <a href="http://dealerselectric.com">http://dealerselectric.com</a><br>Generated for Model #00336EP3H145JM-S |             |   |
| Performed by:   |             |   |
| Checked:  |             |   |
| Customer:   |             |   |
| Close Coupled Pump: Three-Phase - W01 (Rolled Steel) "JM" Type - TEFC -   |             |   |
| Three-phase induction motor<br>Frame 143/5JM - IP55   | 12-SEP-2016 |  |