



Dealers Industrial Equipment

No.:

Date: 12-SEP-2016

Customer :

TECHNICAL PROPOSAL

Three-phase induction motor - Squirrel cage rotor

Product line : Three Phase: W01 (Rolled Steel) - ODP - Standard Efficiency

Catalog Number : 00236OS3E56CFL-S

List Price : \$355

Notes:

Downloaded from <http://dealerselectric.com>

Generated for Model #00236OS3E56CFL-S

Performed by:

Checked:



Dealers Industrial Equipment

No.:

Date: 12-SEP-2016

DATA SHEET Three-phase induction motor - Squirrel cage rotor

Customer :
 Product line : Three Phase: W01 (Rolled Steel) - ODP - Standard Efficiency

Frame : 56H
 Output : 2 HP
 Frequency : 60 Hz
 Poles : 2
 Full load speed : 3470 rpm
 Slip : 3.61 %
 Voltage : 208-230/460 V
 Rated current : 6.24-5.64/2.82 A
 Locked rotor current : 39.5/19.7 A
 Locked rotor current (I_L/I_n) : 7.0
 No-load current : 2.60/1.30 A
 Full load torque : 2.99 lb.ft
 Locked rotor torque : 230 %
 Breakdown torque : 250 %
 Design : A
 Insulation class : F
 Temperature rise : 80 K
 Locked rotor time : 10 s (hot)
 Service factor : 1.15
 Duty cycle : S1
 Ambient temperature : -20°C - +40°C
 Altitude : 1000 m
 Degree of Protection : ODP
 Approximate weight : 27 lb
 Moment of inertia : 0.08400 sq.ft.lb
 Noise level : 62 dB(A)

| | D.E. | N.D.E. |
|---------------------|---------|---------|
| Bearings | 6204 ZZ | 6202 ZZ |
| Regreasing interval | --- | --- |
| Grease amount | --- | --- |

| Load | Power factor | Efficiency (%) |
|------|--------------|----------------|
| 100% | 0.85 | 78.5 |
| 75% | 0.79 | 78.5 |
| 50% | 0.66 | 77.0 |

Notes:
 Downloaded from <http://dealerselectric.com>
 Generated for Model #00236OS3E56CFL-S

Performed by

Checked



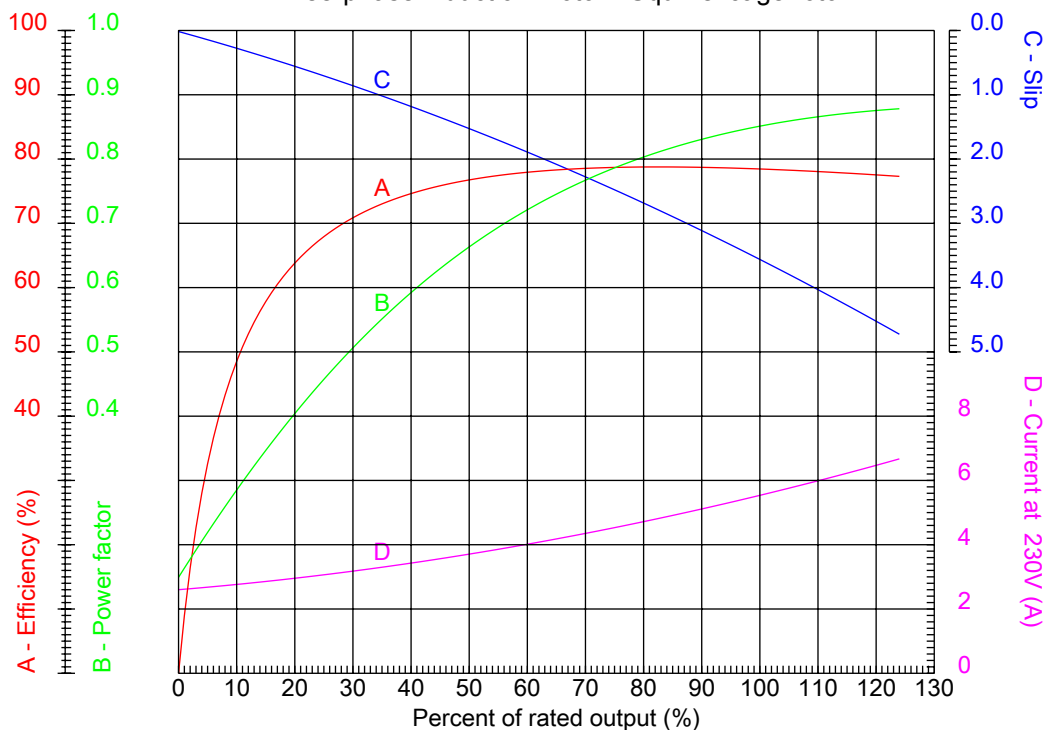
Dealers Industrial Equipment

No.:

Date: 12-SEP-2016

PERFORMANCE CURVES RELATED TO RATED OUTPUT

Three-phase induction motor - Squirrel cage rotor



Customer :
Product line : Three Phase: W01 (Rolled Steel) - ODP - Standard Efficiency

| | | | |
|------------------|--------------------|--|---------|
| Frame | : 56H | Locked rotor current (I _L /I _n) | : 7.0 |
| Output | : 2 HP | Duty cycle | : S1 |
| Frequency | : 60 Hz | Service factor | : 1.15 |
| Full load speed | : 3470 rpm | Design | : A |
| Voltage | : 208-230/460 V | Locked rotor torque | : 230 % |
| Rated current | : 6.24-5.64/2.82 A | Breakdown torque | : 250 % |
| Insulation class | : F | | |

Notes:
Downloaded from <http://dealerselectric.com>
Generated for Model #00236OS3E56CFL-S

Performed by

Checked



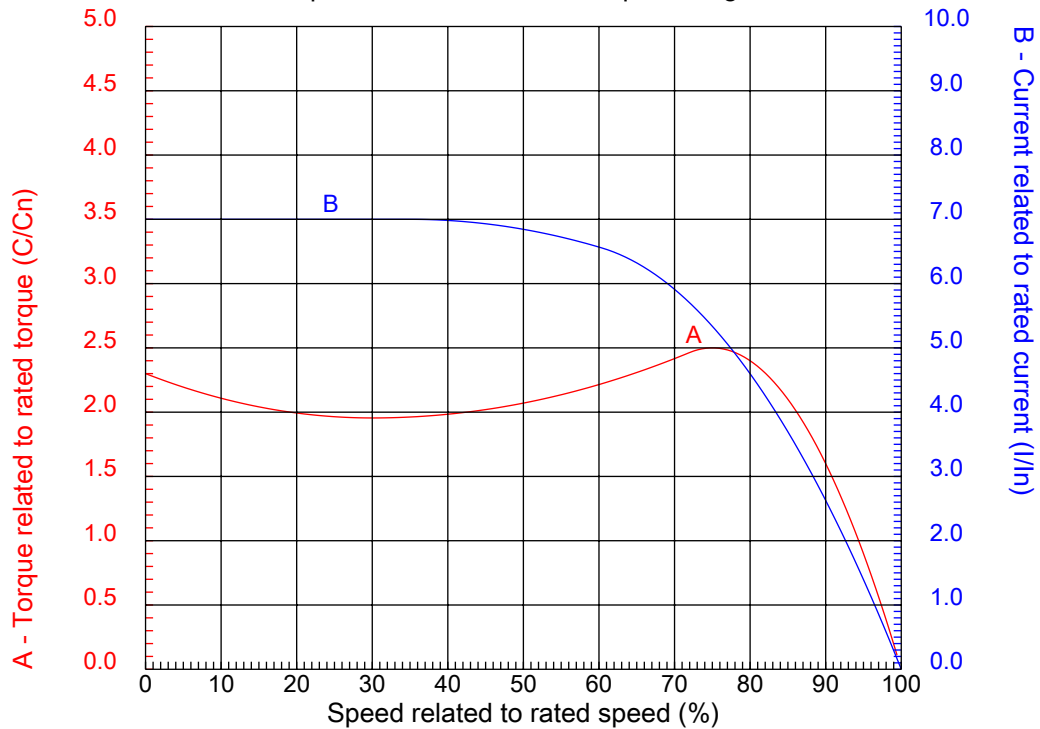
Dealers Industrial Equipment

No.:

Date: 12-SEP-2016

CHARACTERISTIC CURVES RELATED TO SPEED

Three-phase induction motor - Squirrel cage rotor



Customer :
Product line : Three Phase: W01 (Rolled Steel) - ODP - Standard Efficiency

| | | | |
|------------------|--------------------|--|---------|
| Frame | : 56H | Locked rotor current (I _l /I _n) | : 7.0 |
| Output | : 2 HP | Duty cycle | : S1 |
| Frequency | : 60 Hz | Service factor | : 1.15 |
| Full load speed | : 3470 rpm | Design | : A |
| Voltage | : 208-230/460 V | Locked rotor torque | : 230 % |
| Rated current | : 6.24-5.64/2.82 A | Breakdown torque | : 250 % |
| Insulation class | : F | | |

Notes:
Downloaded from <http://dealerselectric.com>
Generated for Model #00236OS3E56CFL-S

Performed by

Checked

1 2 3 4 5 6 7 8

A

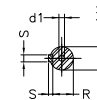
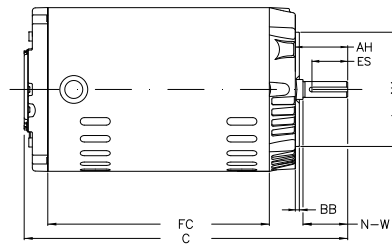
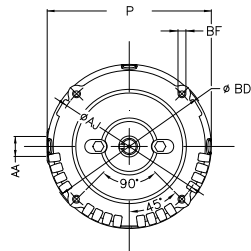
B

C

D

E

F



Notes: Downloaded from <http://dealerselectric.com>
Generated for Model #00236OS3E56CFL-S

Performed by:

Checked:

Customer:

Three Phase: W01 (Rolled Steel) - ODP - Standard Efficiency

Three-phase induction motor
Frame 56H - ODP

12-SEP-2016



| | | | | |
|------------------|----------------|--------------|-------------|----------------------|
| P 6.456 | AB 5.882 | HK 2.638 | FC 7.480 | C 11.496 |
| N-W 1.874 | ES 1.417 | d1 A 3.15 | S 0.187 | U 0.625 |
| AA NPT 1/2" | depth 0.187 | R 0.517 | LL 4.543 | LM 4.106 |
| Flange FC-149 | AJ 5.874 | AK 4.500 | BD 6.450 | BF UNC 3/8"x16-2B |
| BB 0.157 | AH 2.062 | | | |