



# Dealers Industrial Equipment

No.:

Date: 12-SEP-2016

Customer :

## TECHNICAL PROPOSAL

### Single-phase induction motor - Squirrel cage rotor

Product line : Compressor Duty : Single-Phase - ODP

Catalog Number : 00236OS1BCDD56

List Price : \$372

#### Notes:

Downloaded from <http://dealerselectric.com>

Generated for Model #00236OS1BCDD56

Performed by:

Checked:



# Dealers Industrial Equipment

No.:

Date: 12-SEP-2016

## DATA SHEET Single-phase induction motor - Squirrel cage rotor

Customer :  
Product line : Compressor Duty : Single-Phase - ODP

Frame : D56  
Output : 2 HP  
Frequency : 60 Hz  
Poles : 2  
Full load speed : 3440 rpm  
Slip : 4.44 %  
Voltage : 115/208-230 V  
Rated current : 22.0/12.0-11.0 A  
Locked rotor current : 125/62.7 A  
Locked rotor current (I<sub>L</sub>/I<sub>n</sub>) : 5.7  
No-load current : 11.0/5.50 A  
Full load torque : 3.01 lb.ft  
Locked rotor torque : 210 %  
Breakdown torque : 190 %  
Design : ---  
Insulation class : B  
Temperature rise : 80 K  
Locked rotor time : 6 s (hot)  
Service factor : 1.00 (1.00 at 208V)  
Duty cycle : COMPRESSOR  
Ambient temperature : -20°C - +40°C  
Altitude : 1000 m  
Degree of Protection : IP21  
Approximate weight : 38 lb  
Moment of inertia : 0.04983 sq.ft.lb  
Noise level : ---

	D.E.	N.D.E.
Bearings	6204 ZZ	6203 ZZ
Regreasing interval	---	---
Grease amount	---	---

Load	Power factor	Efficiency (%)
100%	0.84	70.0
75%	0.77	70.0
50%	0.67	67.0

Notes:  
Downloaded from <http://dealerselectric.com>  
Generated for Model #00236OS1BCDD56

Performed by

Checked

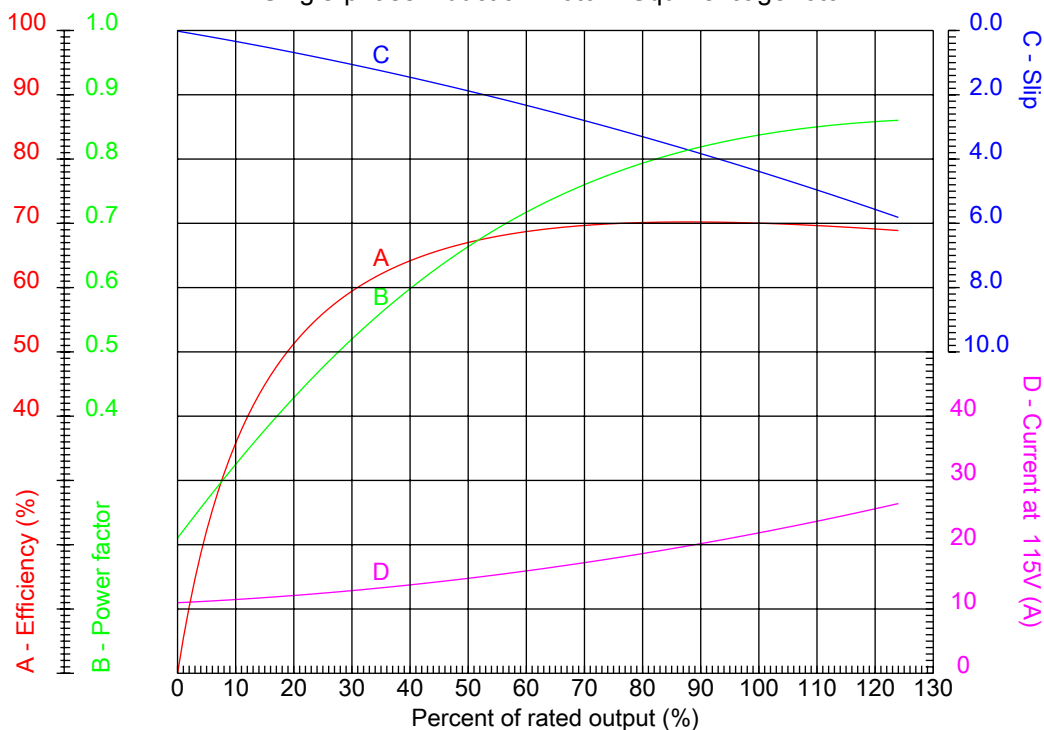


# Dealers Industrial Equipment

No.:

Date: 12-SEP-2016

## PERFORMANCE CURVES RELATED TO RATED OUTPUT Single-phase induction motor - Squirrel cage rotor



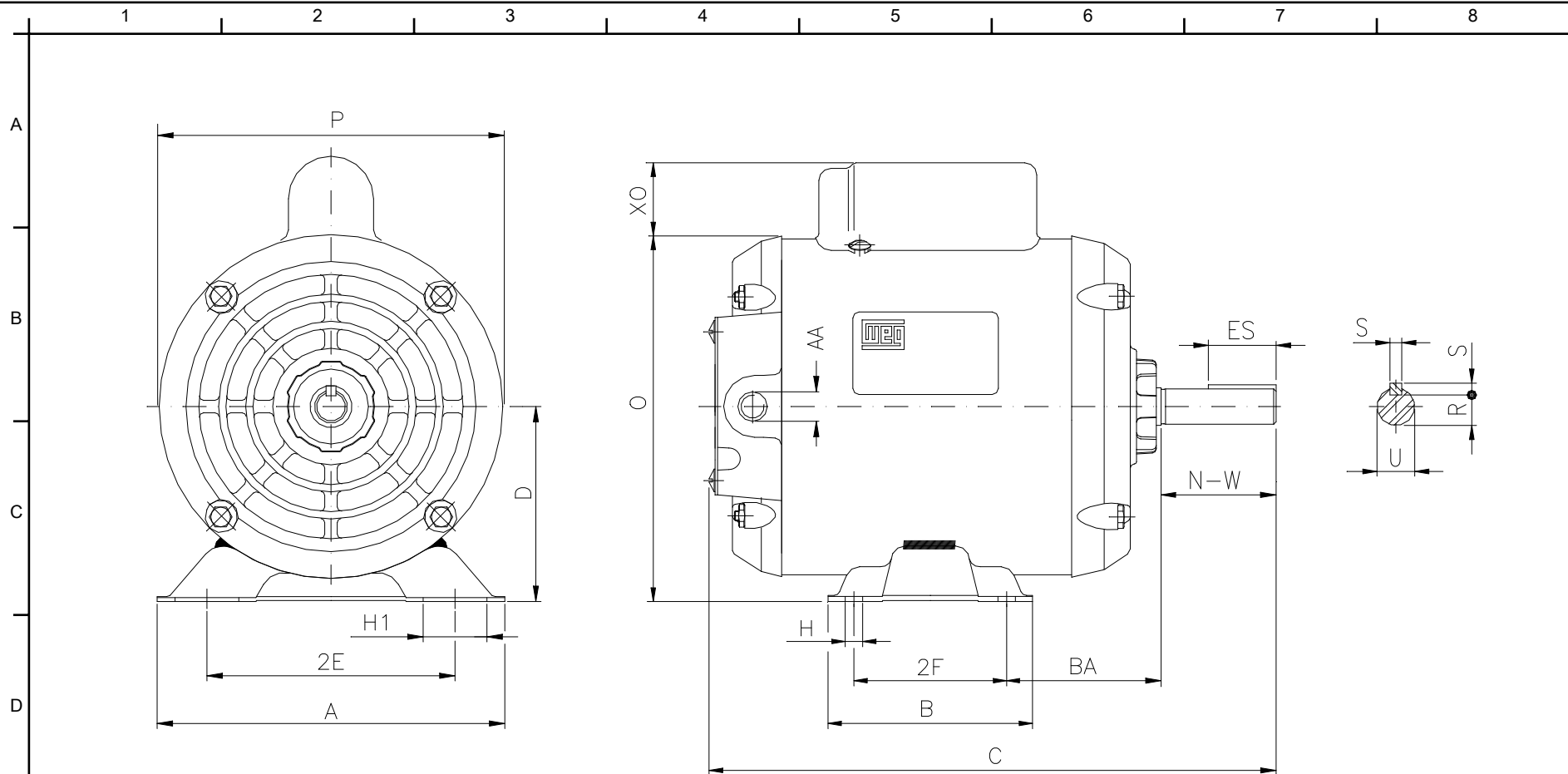
Customer :  
 Product line : Compressor Duty : Single-Phase - ODP

Frame	: D56	Locked rotor current (I <sub>l</sub> /I <sub>n</sub> )	: 5.7
Output	: 2 HP	Duty cycle	: COMPRESSOR
Frequency	: 60 Hz	Service factor	: 1.00 (1.00 at 208V)
Full load speed	: 3440 rpm	Design	: ---
Voltage	: 115/208-230 V	Locked rotor torque	: 210 %
Rated current	: 22.0/12.0-11.0 A	Breakdown torque	: 190 %
Insulation class	: B		

Notes:  
 Downloaded from <http://dealerselectric.com>  
 Generated for Model #00236OS1BCDD56

Performed by

Checked



Notes: Downloaded from <http://dealerselectric.com>  
 Generated for Model #00236OS1BCDD56

Performed by:

Checked:

Customer:

Compressor Duty : Single-Phase - ODP

	2E 4.874	2F 3.000	H 0.342	BA 2.748	A 6.535
F	B 4.016	C 12.283	D 3.500	G 3.04	J 1.220
	O 6.772	P 6.496	ES 1.102	S 0.187	N-W 1.874
	U 0.6250	R 0.517	AA NPT 1/2"		

Single-phase induction motor  
 Frame D56 - IP21

12-SEP-2016

