



# Dealers Industrial Equipment

No.:

Date: 12-SEP-2016

Customer :

## TECHNICAL PROPOSAL

### Three-phase induction motor - Squirrel cage rotor

Product line : W01 (Rolled Steel) Close Coupled Pump ODP - JP Type

Catalog Number : 00158OT3E145JP-SG

List Price : \$693

#### Notes:

Downloaded from <http://dealerselectric.com>

Generated for Model #00158OT3E145JP-SG

Performed by:

Checked:



Dealers Industrial Equipment

No.:

Date: 12-SEP-2016

### DATA SHEET Three-phase induction motor - Squirrel cage rotor

Customer :  
Product line : W01 (Rolled Steel) Close Coupled Pump ODP - JP Type

Frame : 143/5JP  
Output : 1.5 HP  
Frequency : 60 Hz  
Poles : 4  
Full load speed : 1760 rpm  
Slip : 2.22 %  
Voltage : 208-230/460 V  
Rated current : 4.58-4.14/2.07 A  
Locked rotor current : 36.0/18.0 A  
Locked rotor current (I<sub>L</sub>/I<sub>n</sub>) : 8.7  
No-load current : 2.40/1.20 A  
Full load torque : 4.42 lb.ft  
Locked rotor torque : 280 %  
Breakdown torque : 330 %  
Design : B  
Insulation class : F  
Temperature rise : 80 K  
Locked rotor time : 15 s (hot)  
Service factor : 1.15  
Duty cycle : S1  
Ambient temperature : -20°C - +40°C  
Altitude : 1000 m  
Degree of Protection : ODP  
Approximate weight : 42 lb  
Moment of inertia : 0.14262 sq.ft.lb  
Noise level : 52 dB(A)

	D.E.	N.D.E.
Bearings	6206 ZZ	6203 ZZ
Regreasing interval	---	---
Grease amount	---	---

Load	Power factor	Efficiency (%)
100%	0.77	86.5
75%	0.69	86.5
50%	0.56	84.0

Notes:  
Downloaded from <http://dealerselectric.com>  
Generated for Model #00158OT3E145JP-SG

Performed by

Checked



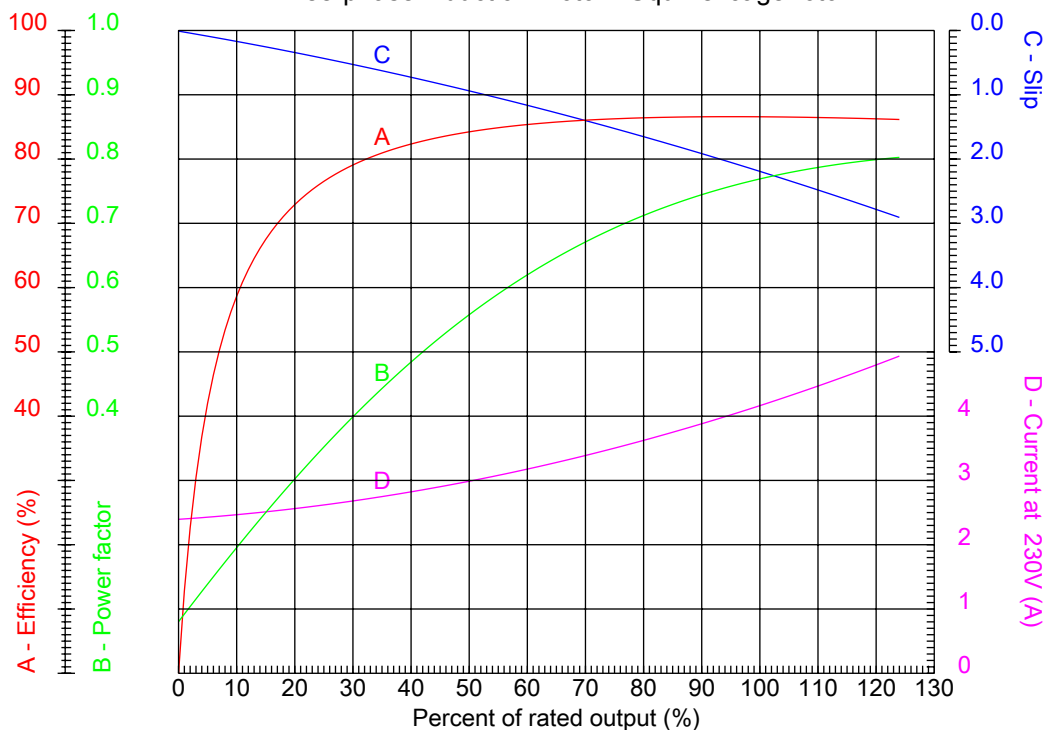
# Dealers Industrial Equipment

No.:

Date: 12-SEP-2016

## PERFORMANCE CURVES RELATED TO RATED OUTPUT

Three-phase induction motor - Squirrel cage rotor



Customer :  
Product line : W01 (Rolled Steel) Close Coupled Pump ODP - JP Type

Frame	: 143/5JP	Locked rotor current (I <sub>l</sub> /I <sub>n</sub> )	: 8.7
Output	: 1.5 HP	Duty cycle	: S1
Frequency	: 60 Hz	Service factor	: 1.15
Full load speed	: 1760 rpm	Design	: B
Voltage	: 208-230/460 V	Locked rotor torque	: 280 %
Rated current	: 4.58-4.14/2.07 A	Breakdown torque	: 330 %
Insulation class	: F		

Notes:  
Downloaded from <http://dealerselectric.com>  
Generated for Model #00158OT3E145JP-SG

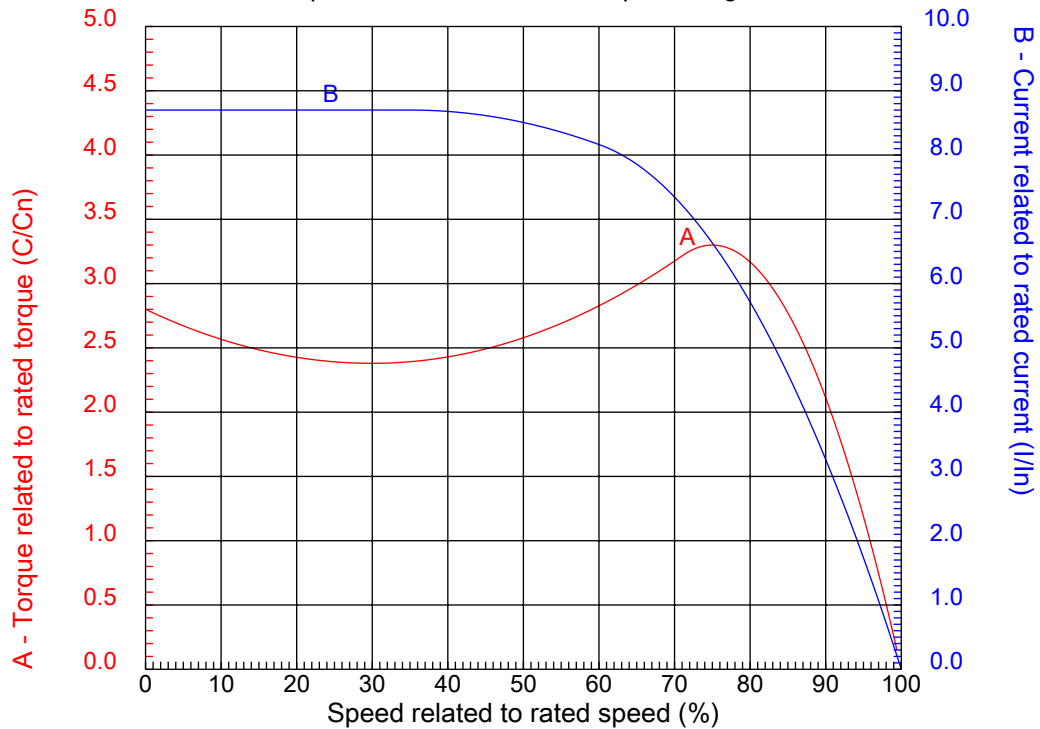
Performed by

Checked



## CHARACTERISTIC CURVES RELATED TO SPEED

Three-phase induction motor - Squirrel cage rotor



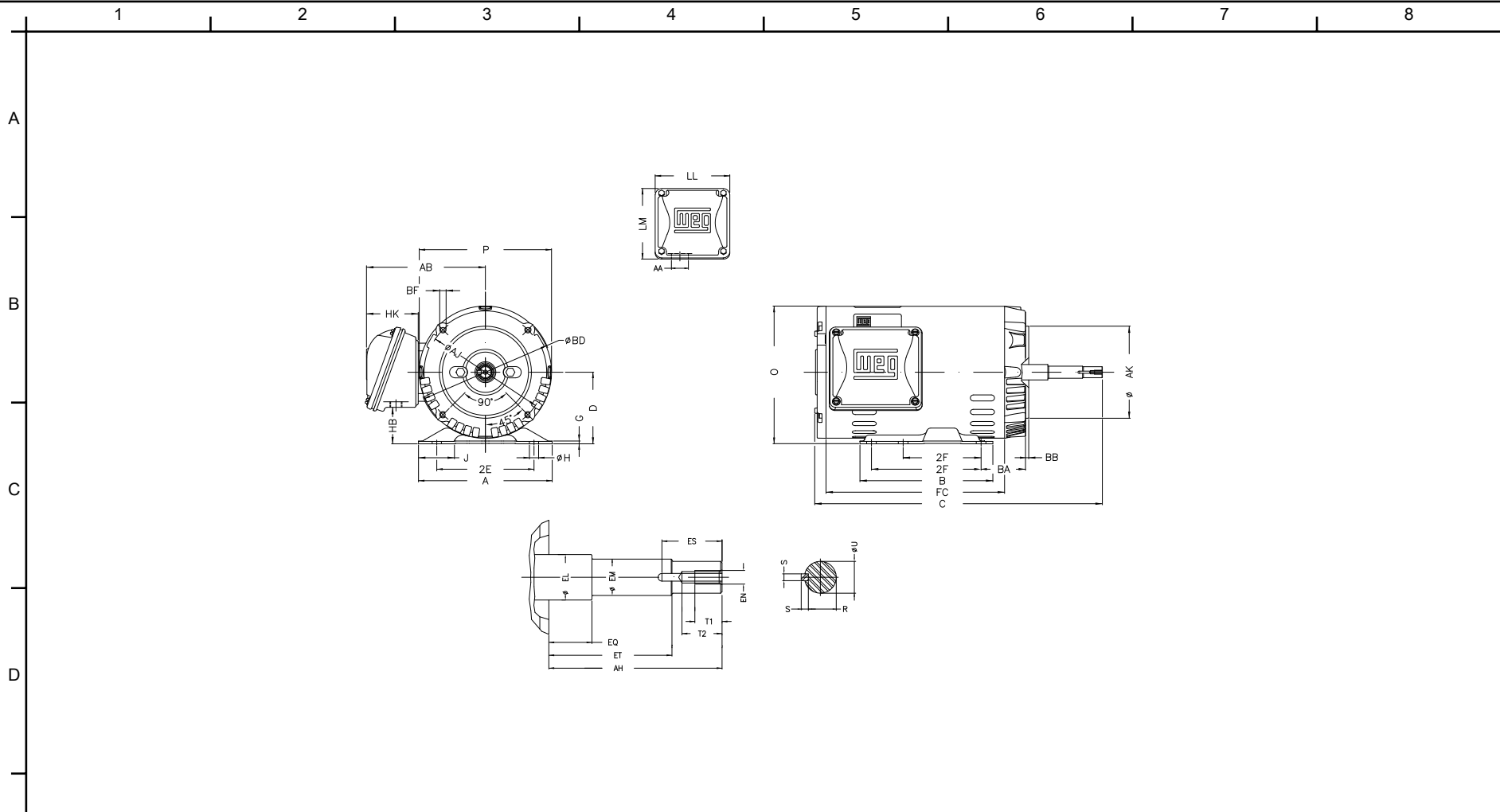
Customer :  
Product line : W01 (Rolled Steel) Close Coupled Pump ODP - JP Type

Frame	: 143/5JP	Locked rotor current (I <sub>l</sub> /I <sub>n</sub> )	: 8.7
Output	: 1.5 HP	Duty cycle	: S1
Frequency	: 60 Hz	Service factor	: 1.15
Full load speed	: 1760 rpm	Design	: B
Voltage	: 208-230/460 V	Locked rotor torque	: 280 %
Rated current	: 4.58-4.14/2.07 A	Breakdown torque	: 330 %
Insulation class	: F		

Notes:  
Downloaded from <http://dealerselectric.com>  
Generated for Model #00158OT3E145JP-SG

Performed by

Checked



Notes: Downloaded from <http://dealerselectric.com>  
 Generated for Model #00158OT3E145JP-SG

2E 5.500	J 1.732	A 6.535	P 6.456	AB 5.873
2F 4.000/5.000	B 6.496	BA 2.750	D 3.500	G 0.120
O 6.724	T 0.004	H 0.343	AA 1.118"	ER 7.319
EQ 1.563	ET 5.941	U 0.8745	EM 1.000	EL 1.156
EP 1.179	ES 1.654	t1 0.787	t2 1.102	C 17.953
CH 1.377	FC 9.055	Flange FC-149	AJ 5.874	AK 4.500
BD 6.450	BF UNC 3/8"x16	BB 0.157	AH 7.319	

Performed by:	
Checked:	
Customer:	
W01 (Rolled Steel) Close Coupled Pump ODP - JP Type	
Three-phase induction motor Frame 143/5JP - ODP	12-SEP-2016



1 2 3 4 5 6 7 8

A

### LOW VOLTAGE

### HIGH VOLTAGE

B



C



D

E

F

Notes: Downloaded from <http://dealerselectric.com>  
 Generated for Model #00158OT3E145JP-SG

Performed by:

Checked:

Customer:

W01 (Rolled Steel) Close Coupled Pump ODP - JP Type

Three-phase induction motor  
 Frame 143/5JP - IP21

12-SEP-2016

