



Dealers Industrial Equipment

No.:

Date: 12-SEP-2016

Customer :

TECHNICAL PROPOSAL

## Single-phase induction motor - Squirrel cage rotor

Product line : Single-Phase : NEMA 48 & 56 ODP - Start Capacitor

Catalog Number : 00158OS1BF56C

List Price : \$461

Notes:

Downloaded from <http://dealerselectric.com>

Generated for Model #00158OS1BF56C

Performed by:

Checked:



Dealers Industrial Equipment

No.:

Date: 12-SEP-2016

### DATA SHEET Single-phase induction motor - Squirrel cage rotor

Customer :  
Product line : Single-Phase : NEMA 48 & 56 ODP - Start Capacitor

Frame : F56H  
Output : 1.5 HP  
Frequency : 60 Hz  
Poles : 4  
Full load speed : 1730 rpm  
Slip : 3.89 %  
Voltage : 115/208-230 V  
Rated current : 18.5/9.27 A  
Locked rotor current : 111/55.6 A  
Locked rotor current (I<sub>L</sub>/I<sub>n</sub>) : 6.0  
No-load current : 12.8/6.38 A  
Full load torque : 4.49 lb.ft  
Locked rotor torque : 260 %  
Breakdown torque : 240 %  
Design : ---  
Insulation class : B  
Temperature rise : 80 K  
Locked rotor time : ---  
Service factor : 1.15 (1.00 at 208V)  
Duty cycle : S1  
Ambient temperature : -20°C - +40°C  
Altitude : 1000 m  
Degree of Protection : IP21  
Approximate weight : 45 lb  
Moment of inertia : 0.19554 sq.ft.lb  
Noise level : ---

	D.E.	N.D.E.
Bearings	6204 ZZ	6203 ZZ
Regreasing interval	---	---
Grease amount	---	---

Load	Power factor	Efficiency (%)
100%	0.71	72.9
75%	0.62	72.0
50%	0.50	67.5

Notes:  
Downloaded from <http://dealerselectric.com>  
Generated for Model #00158OS1BF56C

Performed by

Checked



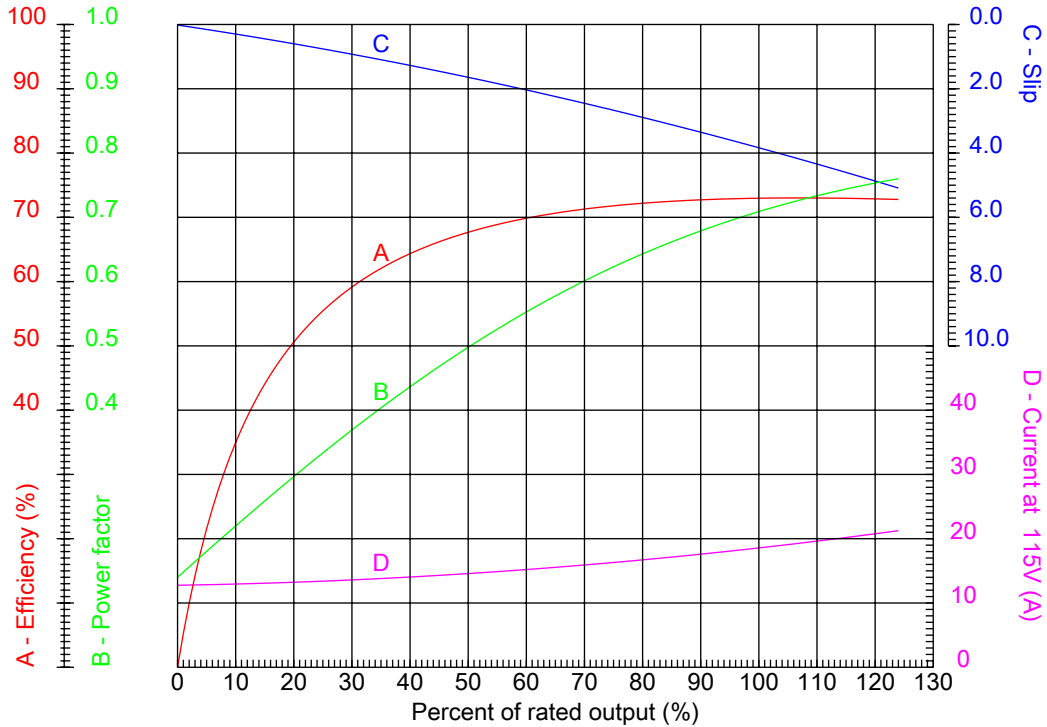
# Dealers Industrial Equipment

No.:

Date: 12-SEP-2016

## PERFORMANCE CURVES RELATED TO RATED OUTPUT

Single-phase induction motor - Squirrel cage rotor



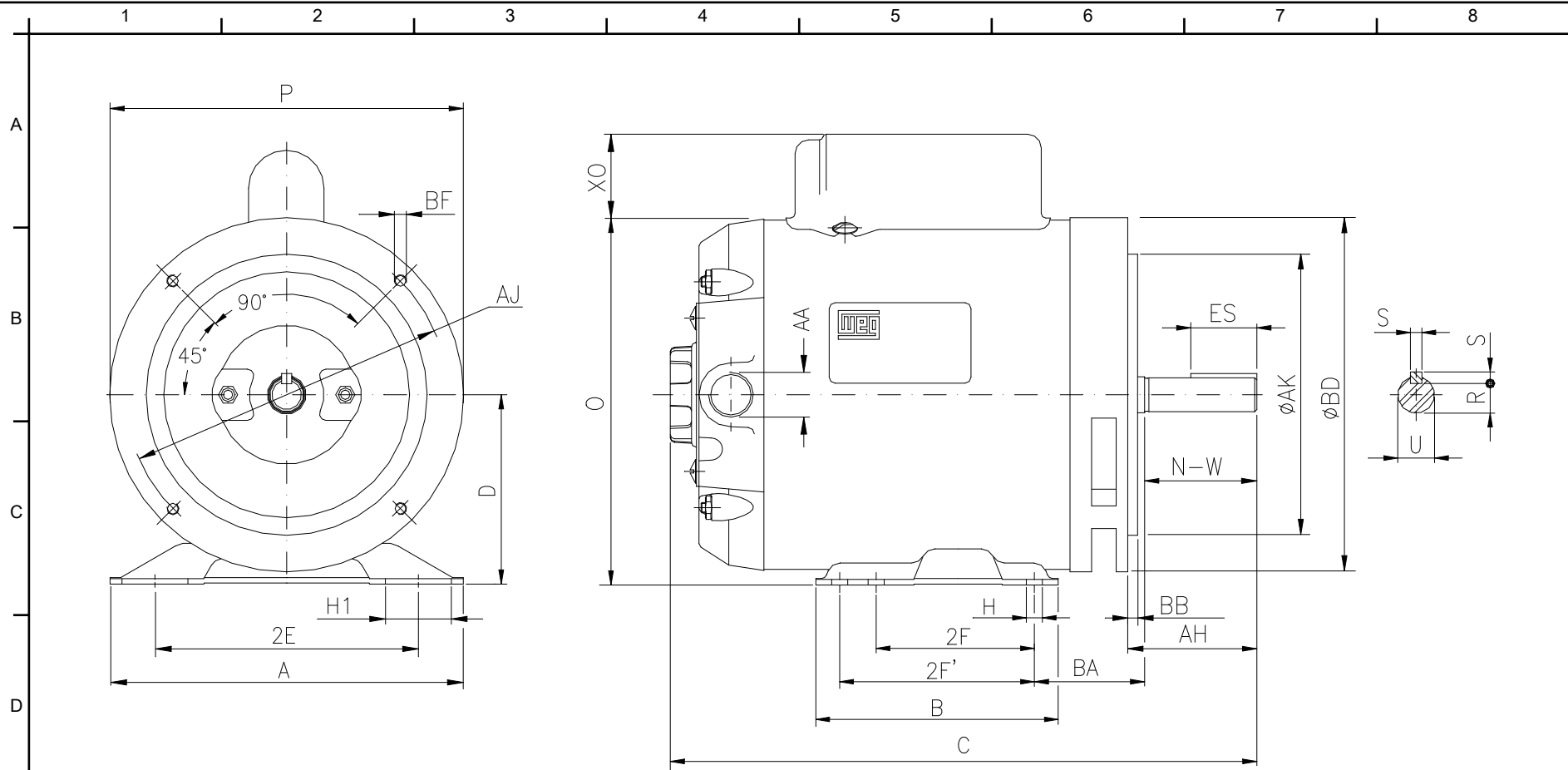
Customer :  
 Product line : Single-Phase : NEMA 48 & 56 ODP - Start Capacitor

Frame	: F56H	Locked rotor current (I <sub>l</sub> /I <sub>n</sub> )	: 6.0
Output	: 1.5 HP	Duty cycle	: S1
Frequency	: 60 Hz	Service factor	: 1.15 (1.00 at 208V)
Full load speed	: 1730 rpm	Design	: ---
Voltage	: 115/208-230 V	Locked rotor torque	: 260 %
Rated current	: 18.5/9.27 A	Breakdown torque	: 240 %
Insulation class	: B		

Notes:  
 Downloaded from <http://dealerselectric.com>  
 Generated for Model #00158OS1BF56C

Performed by

Checked



Notes: Downloaded from <http://dealerselectric.com>  
 Generated for Model #00158OS1BF56C

Performed by:

Checked:

Customer:

Single-Phase : NEMA 48 & 56 ODP - Start Capacitor

Single-phase induction motor

Frame F56H - IP21

12-SEP-2016



	2E 4.874	2F 3.000	H 0.342	H1 1.220	BA 2.750
	A 6.535	B 6.496	C 13.464	D 3.500	O 6.732
	XO 0.000	P 6.457	ES 1.102	S 0.187	N-W 1.874
F	U 0.6250	R 0.517	AA NPT 1/2"	d1 A 3.15	AH 2.063
	Flange FC-149	AJ 5.874	AK 4.500	BD 6.500	BF UNC 3/8"x16-2B
	BB 0.157				