



Dealers Industrial Equipment

No.:

Date: 12-SEP-2016

Customer :

TECHNICAL PROPOSAL

Single-phase induction motor - Squirrel cage rotor

Product line : Single Phase: W01 (Rolled Steel) - TEFC - Standard Efficiency

Catalog Number : 00158ES1B56-S

List Price : \$456

Notes:

Downloaded from <http://dealerselectric.com>

Generated for Model #00158ES1B56-S

Performed by:

Checked:



Dealers Industrial Equipment

No.:

Date: 12-SEP-2016

DATA SHEET Single-phase induction motor - Squirrel cage rotor

Customer :
 Product line : Single Phase: W01 (Rolled Steel) - TEFC - Standard Efficiency

Frame : 56H
 Output : 1.5 HP
 Frequency : 60 Hz
 Poles : 4
 Full load speed : 1745 rpm
 Slip : 3.06 %
 Voltage : 115/208-230 V
 Rated current : 15.0/8.27-7.48 A
 Locked rotor current : 120/59.8 A
 Locked rotor current (I_L/I_n) : 8.0
 No-load current : 8.50/4.25 A
 Full load torque : 4.45 lb.ft
 Locked rotor torque : 250 %
 Breakdown torque : 270 %
 Design : ---
 Insulation class : F
 Temperature rise : 80 K
 Locked rotor time : 8 s (hot)
 Service factor : 1.15
 Duty cycle : S1
 Ambient temperature : -20°C - +40°C
 Altitude : 1000 m
 Degree of Protection : IP55
 Approximate weight : 43 lb
 Moment of inertia : 0.14262 sq.ft.lb
 Noise level : 54 dB(A)

| | D.E. | N.D.E. |
|---------------------|---------|---------|
| Bearings | 6204 ZZ | 6202 ZZ |
| Regreasing interval | --- | --- |
| Grease amount | --- | --- |

| Load | Power factor | Efficiency (%) |
|------|--------------|----------------|
| 100% | 0.83 | 77.0 |
| 75% | 0.78 | 75.0 |
| 50% | 0.68 | 69.0 |

Notes:
 Downloaded from <http://dealerselectric.com>
 Generated for Model #00158ES1B56-S

Performed by

Checked



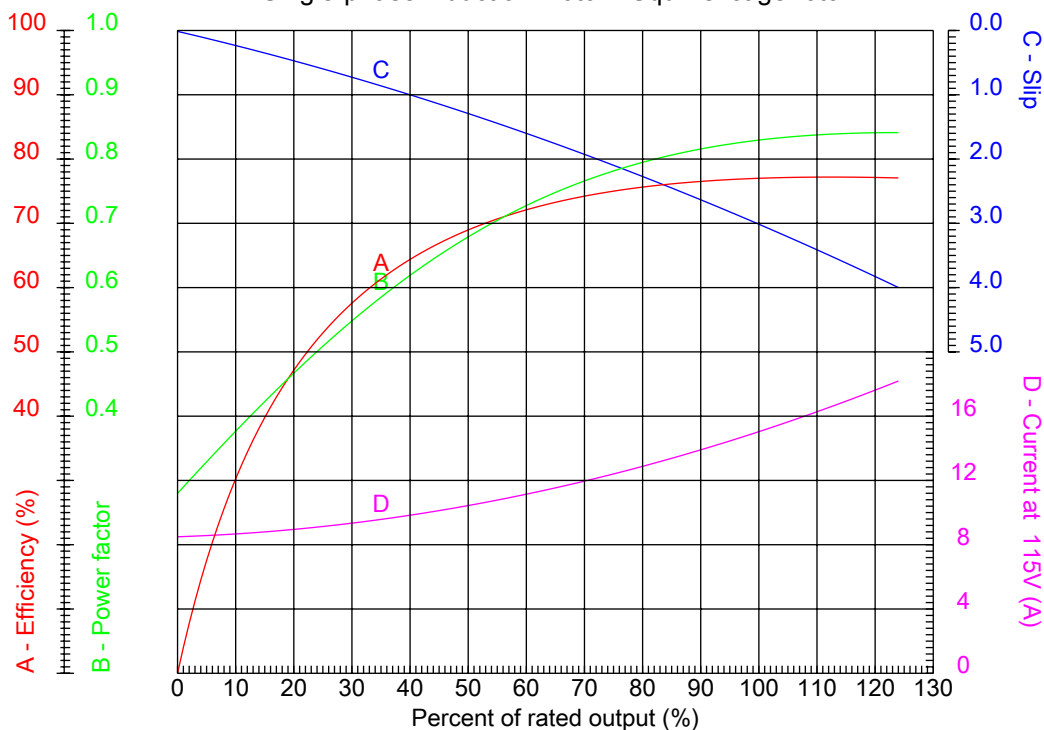
Dealers Industrial Equipment

No.:

Date: 12-SEP-2016

PERFORMANCE CURVES RELATED TO RATED OUTPUT

Single-phase induction motor - Squirrel cage rotor



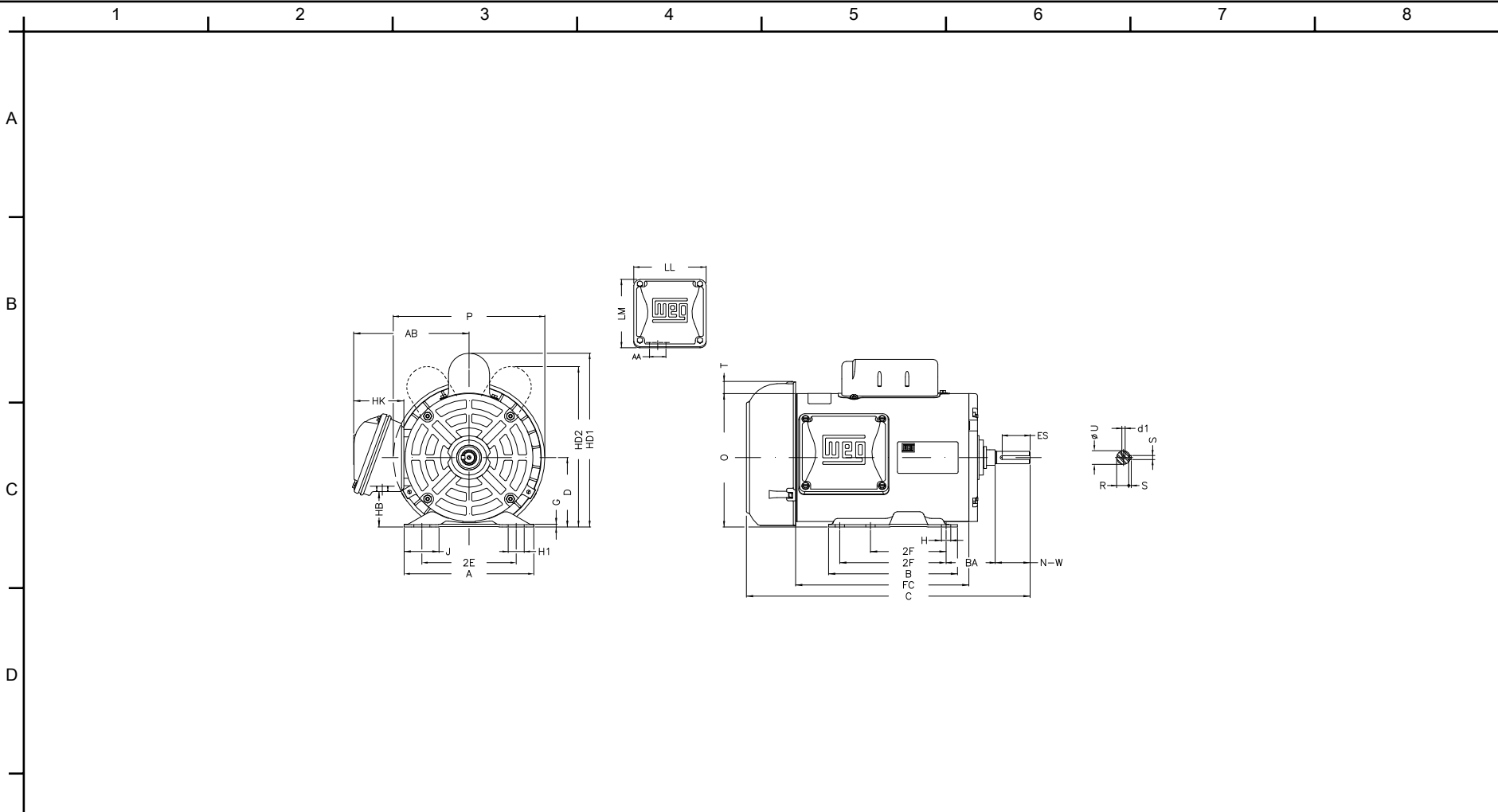
Customer :
 Product line : Single Phase: W01 (Rolled Steel) - TEFC - Standard Efficiency

| | | | |
|------------------|--------------------|--|---------|
| Frame | : 56H | Locked rotor current (I _l /I _n) | : 8.0 |
| Output | : 1.5 HP | Duty cycle | : S1 |
| Frequency | : 60 Hz | Service factor | : 1.15 |
| Full load speed | : 1745 rpm | Design | : --- |
| Voltage | : 115/208-230 V | Locked rotor torque | : 250 % |
| Rated current | : 15.0/8.27-7.48 A | Breakdown torque | : 270 % |
| Insulation class | : F | | |

Notes:
 Downloaded from <http://dealerselectric.com>
 Generated for Model #00158ES1B56-S


Performed by

Checked



Notes: Downloaded from <http://dealerselectric.com>
 Generated for Model #00158ES1B56-S

| | | | | |
|-------|--------|-------------|--------|--------|
| P | AB | J | 2E | A |
| 7.638 | 5.882 | 1.732 | 4.874 | 6.535 |
| H | G | HB | HK | XO |
| 0.343 | 0.120 | 1.783 | 2.638 | 0.603 |
| O | FC | 2F | B | C |
| 6.724 | 9.448 | 3.000/5.000 | 6.496 | 15.083 |
| BA | N-W | ES | d1 | S |
| 2.750 | 1.874 | 1.417 | A 3.15 | 0.187 |
| U | AA | depth | R | LL |
| 0.625 | 0.881" | 0.187 | 0.517 | 4.543 |
| LM | BB | D | CH | HD2 |
| 4.106 | 0.603 | 3.500 | 1.377 | 8.150 |
| HC2 | | | | |
| 4.650 | | | | |

| | |
|---|---|
| Performed by: | |
| Checked: | |
| Customer: | |
| Single Phase: W01 (Rolled Steel) - TEFC - Standard Efficiency | |
| Single-phase induction motor | 12-SEP-2016 |
| Frame 56H - IP55 |  |