



Dealers Industrial Equipment

No.:

Date: 12-SEP-2016

Customer :

TECHNICAL PROPOSAL

Single-phase induction motor - Squirrel cage rotor

Product line : Single Phase: W01 (Rolled Steel) - ODP - Premium Efficiency (DOE)

Catalog Number : 00156OT1B56-S

List Price : \$393

Notes:

Downloaded from <http://dealerselectric.com>

Generated for Model #00156OT1B56-S

Performed by:

Checked:



Dealers Industrial Equipment

No.:

Date: 12-SEP-2016

DATA SHEET Single-phase induction motor - Squirrel cage rotor

Customer :
 Product line : Single Phase: W01 (Rolled Steel) - ODP - Premium Efficiency (DOE)

Frame : 56
 Output : 1.5 HP
 Frequency : 60 Hz
 Poles : 2
 Full load speed : 3500 rpm
 Slip : 2.78 %
 Voltage : 115/208-230 V
 Rated current : 13.3/6.90-6.65 A
 Locked rotor current : 102/51.2 A
 Locked rotor current (I_L/I_n) : 7.7
 No-load current : 3.20/1.60 A
 Full load torque : 2.22 lb.ft
 Locked rotor torque : 260 %
 Breakdown torque : 270 %
 Design : ---
 Insulation class : F
 Temperature rise : 80 K
 Locked rotor time : 10 s (hot)
 Service factor : 1.15
 Duty cycle : S1
 Ambient temperature : -20°C - +40°C
 Altitude : 1000 m
 Degree of Protection : ODP
 Approximate weight : 32 lb
 Moment of inertia : 0.06288 sq.ft.lb
 Noise level : 58 dB(A)

	D.E.	N.D.E.	Load	Power factor	Efficiency (%)
Bearings	6204 ZZ	6202 ZZ	100%	0.89	81.5
Regreasing interval	---	---	75%	0.89	79.0
Grease amount	---	---	50%	0.88	73.0

Notes:
 Downloaded from <http://dealerselectric.com>
 Generated for Model #00156OT1B56-S

Performed by

Checked



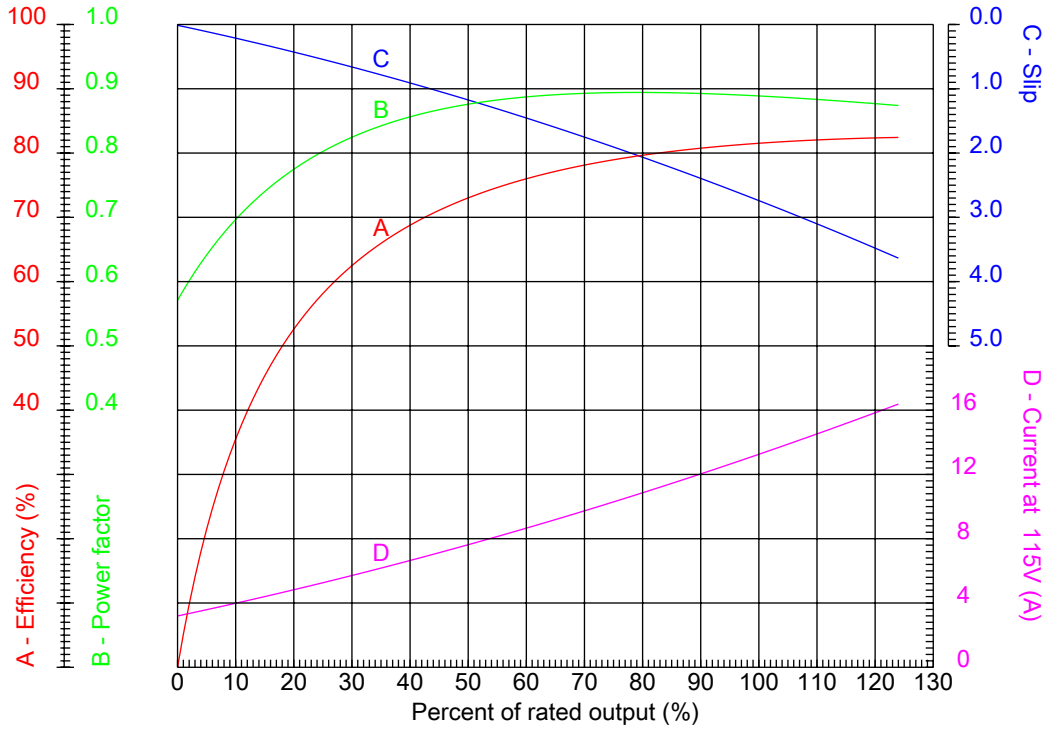
Dealers Industrial Equipment

No.:

Date: 12-SEP-2016

PERFORMANCE CURVES RELATED TO RATED OUTPUT

Single-phase induction motor - Squirrel cage rotor



Customer :
 Product line : Single Phase: W01 (Rolled Steel) - ODP - Premium Efficiency (DOE)

Frame : 56	Locked rotor current (I _L /I _n) : 7.7
Output : 1.5 HP	Duty cycle : S1
Frequency : 60 Hz	Service factor : 1.15
Full load speed : 3500 rpm	Design : ---
Voltage : 115/208-230 V	Locked rotor torque : 260 %
Rated current : 13.3/6.90-6.65 A	Breakdown torque : 270 %
Insulation class : F	

Notes:
 Downloaded from <http://dealerselectric.com>
 Generated for Model #00156OT1B56-S

Performed by

Checked

1 2 3 4 5 6 7 8

A

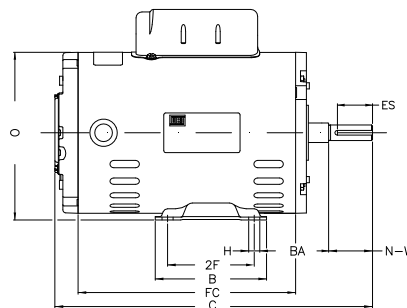
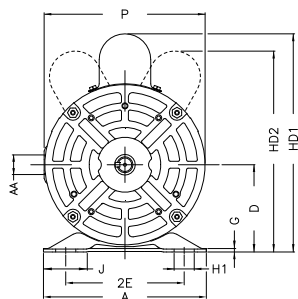
B

C

D

E

F



Notes: Downloaded from <http://dealerselectric.com>
Generated for Model #00156OT1B56-S

Performed by:

Checked:

Customer:

Single Phase: W01 (Rolled Steel) - ODP - Premium Efficiency (DOE)

Single-phase induction motor
Frame 56 - ODP

12-SEP-2016



P	J	2E	A	H
6.456	1.732	4.874	6.535	0.343
G	FC	2F	B	C
0.120	8.268	3.000	4.016	12.284
BA	N-W	ES	d1	S
2.750	1.874	1.417	A 3.15	0.187
U	AA	depth	R	BB
0.625	NPT 1/2"	0.187	0.517	0.004
D	XO	HD2	O	HC2
3.500	0.004	8.150	6.724	4.650