



Dealers Industrial Equipment

No.:

Date: 12-SEP-2016

Customer :

TECHNICAL PROPOSAL

Three-phase induction motor - Squirrel cage rotor

Product line : Three Phase: W01 (Rolled Steel) - ODP - Premium Efficiency (DOE)

Catalog Number : 00136OT3E56-S

List Price : \$355

Notes:

Downloaded from <http://dealerselectric.com>

Generated for Model #00136OT3E56-S

Performed by:

Checked:



# Dealers Industrial Equipment

No.:

Date: 12-SEP-2016

## DATA SHEET Three-phase induction motor - Squirrel cage rotor

Customer :  
 Product line : Three Phase: W01 (Rolled Steel) - ODP - Premium Efficiency (DOE)

Frame : 56  
 Output : 1 HP  
 Frequency : 60 Hz  
 Poles : 2  
 Full load speed : 3470 rpm  
 Slip : 3.61 %  
 Voltage : 208-230/460 V  
 Rated current : 3.34-3.02/1.51 A  
 Locked rotor current : 19.3/9.66 A  
 Locked rotor current (I<sub>L</sub>/I<sub>n</sub>) : 6.4  
 No-load current : 1.90/0.950 A  
 Full load torque : 1.49 lb.ft  
 Locked rotor torque : 230 %  
 Breakdown torque : 260 %  
 Design : A  
 Insulation class : F  
 Temperature rise : 80 K  
 Locked rotor time : 23 s (hot)  
 Service factor : 1.25  
 Duty cycle : S1  
 Ambient temperature : -20°C - +40°C  
 Altitude : 1000 m  
 Degree of Protection : ODP  
 Approximate weight : 20 lb  
 Moment of inertia : 0.05173 sq.ft.lb  
 Noise level : 62 dB(A)

	D.E.	N.D.E.
Bearings	6204 ZZ	6202 ZZ
Regreasing interval	---	---
Grease amount	---	---

Load	Power factor	Efficiency (%)
100%	0.81	77.0
75%	0.73	75.5
50%	0.60	70.0

Notes:  
 Downloaded from <http://dealerselectric.com>  
 Generated for Model #00136OT3E56-S

Performed by

Checked



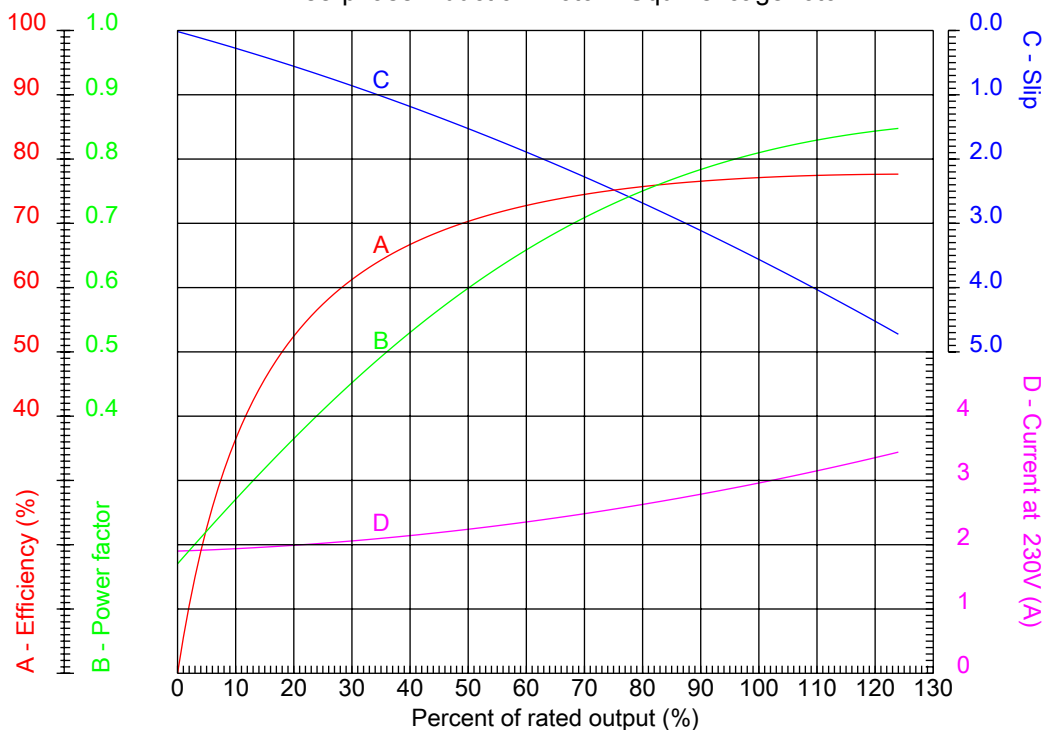
# Dealers Industrial Equipment

No.:

Date: 12-SEP-2016

## PERFORMANCE CURVES RELATED TO RATED OUTPUT

Three-phase induction motor - Squirrel cage rotor



Customer :  
Product line : Three Phase: W01 (Rolled Steel) - ODP - Premium Efficiency (DOE)

Frame	: 56	Locked rotor current (I <sub>l</sub> /I <sub>n</sub> )	: 6.4
Output	: 1 HP	Duty cycle	: S1
Frequency	: 60 Hz	Service factor	: 1.25
Full load speed	: 3470 rpm	Design	: A
Voltage	: 208-230/460 V	Locked rotor torque	: 230 %
Rated current	: 3.34-3.02/1.51 A	Breakdown torque	: 260 %
Insulation class	: F		

Notes:  
Downloaded from <http://dealerselectric.com>  
Generated for Model #00136OT3E56-S

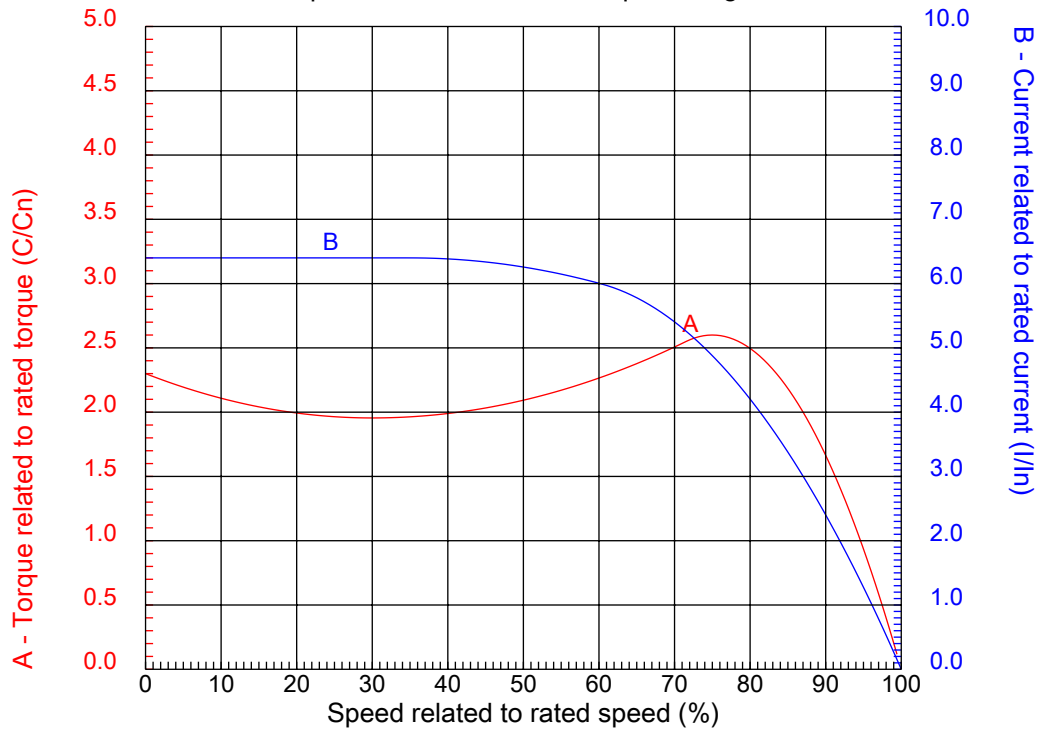
Performed by

Checked



## CHARACTERISTIC CURVES RELATED TO SPEED

Three-phase induction motor - Squirrel cage rotor



Customer :  
Product line : Three Phase: W01 (Rolled Steel) - ODP - Premium Efficiency (DOE)

Frame	: 56	Locked rotor current (I <sub>l</sub> /I <sub>n</sub> )	: 6.4
Output	: 1 HP	Duty cycle	: S1
Frequency	: 60 Hz	Service factor	: 1.25
Full load speed	: 3470 rpm	Design	: A
Voltage	: 208-230/460 V	Locked rotor torque	: 230 %
Rated current	: 3.34-3.02/1.51 A	Breakdown torque	: 260 %
Insulation class	: F		

Notes:  
Downloaded from <http://dealerselectric.com>  
Generated for Model #00136OT3E56-S

Performed by

Checked

1 2 3 4 5 6 7 8

A

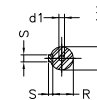
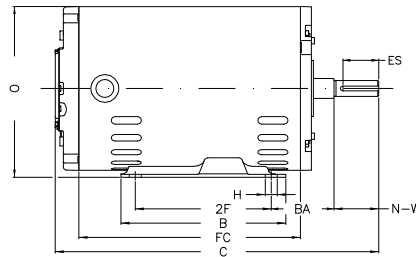
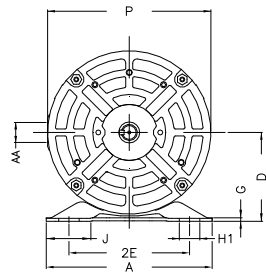
B

C

D

E

F



Notes: Downloaded from <http://dealerselectric.com>  
Generated for Model #00136OT3E56-S

Performed by:

Checked:

Customer:

Three Phase: W01 (Rolled Steel) - ODP - Premium Efficiency (DOE)

Three-phase induction motor  
Frame 56 - ODP

12-SEP-2016



P	AB	J	2E	A
6.456	3.323	1.732	4.874	6.535
H	G	HB	HK	T
0.343	0.120	1.784	2.629	0.004
O	FC	2F	B	C
6.724	6.693	3.000	4.016	10.709
BA	N-W	ES	d1	S
2.750	1.874	1.417	A 3.15	0.187
U	AA	depth	R	LL
0.625	NPT 1/2"	0.187	0.517	4.563
LM	BB	D		
4.090	0.004	3.500		