



Dealers Industrial Equipment

No.:

Date: 12-SEP-2016

Customer :

TECHNICAL PROPOSAL

Single-phase induction motor - Squirrel cage rotor

Product line : Single Phase: W01 (Rolled Steel) - ODP - Premium Efficiency (DOE)

Catalog Number : 00136OT1B56C-S

List Price : \$375

Notes:

Downloaded from <http://dealerselectric.com>

Generated for Model #00136OT1B56C-S

Performed by:

Checked:



Dealers Industrial Equipment

No.:

Date: 12-SEP-2016

DATA SHEET

Single-phase induction motor - Squirrel cage rotor

Customer :
Product line : Single Phase: W01 (Rolled Steel) - ODP - Premium Efficiency (DOE)

Frame : 56
Output : 1 HP
Frequency : 60 Hz
Poles : 2
Full load speed : 3510 rpm
Slip : 2.50 %
Voltage : 115/208-230 V
Rated current : 8.60/4.75-4.30 A
Locked rotor current : 72.2/36.1 A
Locked rotor current (I_L/I_n) : 8.4
No-load current : 2.60/1.30 A
Full load torque : 1.48 lb.ft
Locked rotor torque : 290 %
Breakdown torque : 300 %
Design : ---
Insulation class : F
Temperature rise : 80 K
Locked rotor time : 16 s (hot)
Service factor : 1.25
Duty cycle : S1
Ambient temperature : -20°C - +40°C
Altitude : 1000 m
Degree of Protection : ODP
Approximate weight : 30 lb
Moment of inertia : 0.05505 sq.ft.lb
Noise level : 58 dB(A)

	D.E.	N.D.E.	Load	Power factor	Efficiency (%)
Bearings	6204 ZZ	6202 ZZ	100%	0.94	80.4
Regreasing interval	---	---	75%	0.93	76.0
Grease amount	---	---	50%	0.89	69.0

Notes:

Downloaded from <http://dealerselectric.com>
Generated for Model #00136OT1B56C-S

Performed by

Checked



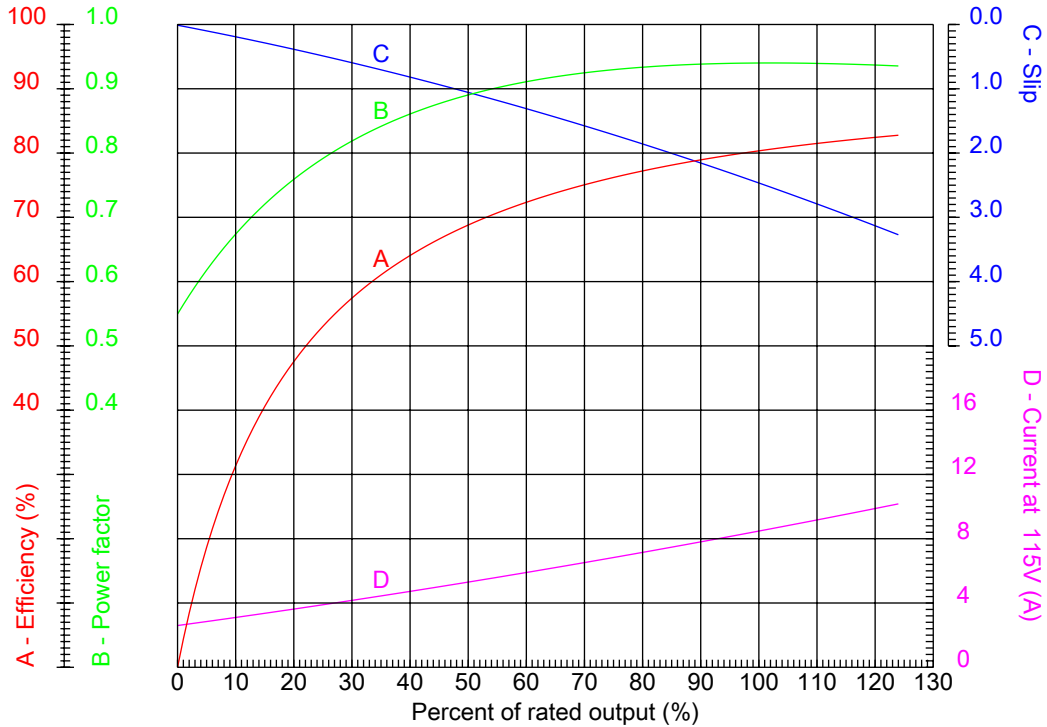
Dealers Industrial Equipment

No.:

Date: 12-SEP-2016

PERFORMANCE CURVES RELATED TO RATED OUTPUT

Single-phase induction motor - Squirrel cage rotor



Customer :
 Product line : Single Phase: W01 (Rolled Steel) - ODP - Premium Efficiency (DOE)

Frame	: 56	Locked rotor current (I _l /I _n)	: 8.4
Output	: 1 HP	Duty cycle	: S1
Frequency	: 60 Hz	Service factor	: 1.25
Full load speed	: 3510 rpm	Design	: ---
Voltage	: 115/208-230 V	Locked rotor torque	: 290 %
Rated current	: 8.60/4.75-4.30 A	Breakdown torque	: 300 %
Insulation class	: F		

Notes:
 Downloaded from <http://dealerselectric.com>
 Generated for Model #00136OT1B56C-S

Performed by	Checked
--------------	---------

1 2 3 4 5 6 7 8

A

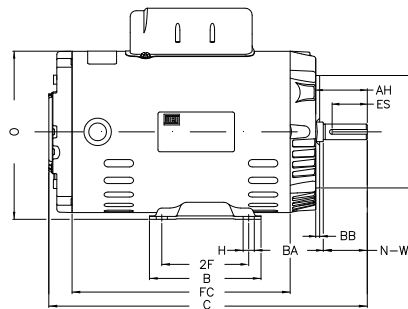
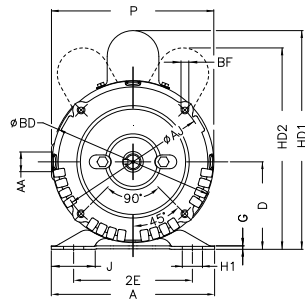
B

C

D

E

F



Notes: Downloaded from <http://dealerselectric.com>
Generated for Model #00136OT1B56C-S

Performed by:

Checked:

Customer:

Single Phase: W01 (Rolled Steel) - ODP - Premium Efficiency (DOE)

Single-phase induction motor
Frame 56 - ODP

12-SEP-2016



P 6.456	J 1.732	2E 4.874	A 6.535	H 0.343
G 0.120	FC 7.874	2F 3.000	B 4.016	C 11.890
BA 2.750	N-W 1.874	ES 1.417	d1 A 3,15	S 0.187
U 0.625	AA NPT 1/2"	depth 0.187	R 0.517	D 3.500
XO 0.004	HD2 8.150	O 6.724	HC2 4.650	Flange FC-149
AJ 5.874	AK 4.500	BD 6.450	BF UNC 3/8"x16-2B	BB 0.157
AH 2.062				