



Dealers Industrial Equipment

No.:

Date: 12-SEP-2016

Customer :

TECHNICAL PROPOSAL

Single-phase induction motor - Squirrel cage rotor

Product line : Single-Phase : NEMA 48 & 56 ODP - Start Capacitor

Catalog Number : 00136OS1BD56

List Price : \$296

Notes:

Downloaded from <http://dealerselectric.com>

Generated for Model #00136OS1BD56

Performed by:

Checked:



Dealers Industrial Equipment

No.:

Date: 12-SEP-2016

DATA SHEET Single-phase induction motor - Squirrel cage rotor

Customer :
Product line : Single-Phase : NEMA 48 & 56 ODP - Start Capacitor

Frame : D56
Output : 1 HP
Frequency : 60 Hz
Poles : 2
Full load speed : 3520 rpm
Slip : 2.22 %
Voltage : 115/208-230 V
Rated current : 13.6/6.80-6.80 A
Locked rotor current : 95.2/47.6 A
Locked rotor current (I_L/I_n) : 7.0
No-load current : 9.80/4.90 A
Full load torque : 1.47 lb.ft
Locked rotor torque : 280 %
Breakdown torque : 290 %
Design : ---
Insulation class : B
Temperature rise : 80 K
Locked rotor time : 6 s (hot)
Service factor : 1.25 (1.00 at 208V)
Duty cycle : S1
Ambient temperature : -20°C - +40°C
Altitude : 1000 m
Degree of Protection : IP21
Approximate weight : 25 lb
Moment of inertia : 0.04153 sq.ft.lb
Noise level : ---

	D.E.	N.D.E.	Load	Power factor	Efficiency (%)
Bearings	6204 ZZ	6203 ZZ	100%	0.71	66.3
Regreasing interval	---	---	75%	0.63	62.1
Grease amount	---	---	50%	0.53	54.5

Notes:
Downloaded from <http://dealerselectric.com>
Generated for Model #00136OS1BD56

Performed by

Checked



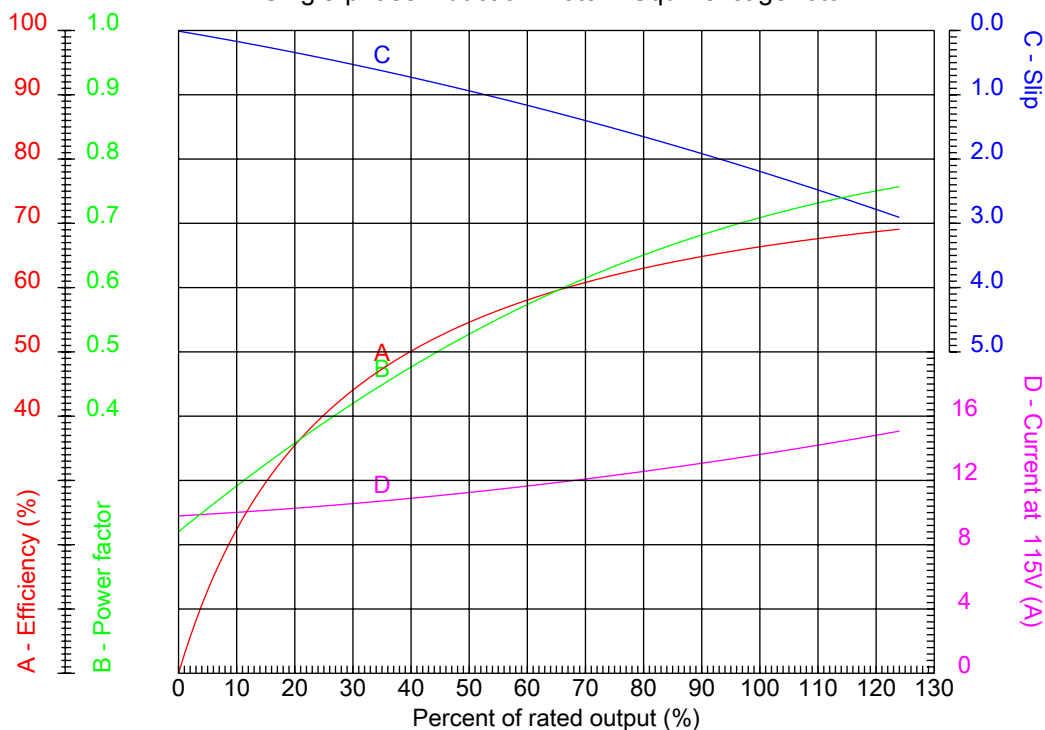
Dealers Industrial Equipment

No.:

Date: 12-SEP-2016

PERFORMANCE CURVES RELATED TO RATED OUTPUT

Single-phase induction motor - Squirrel cage rotor



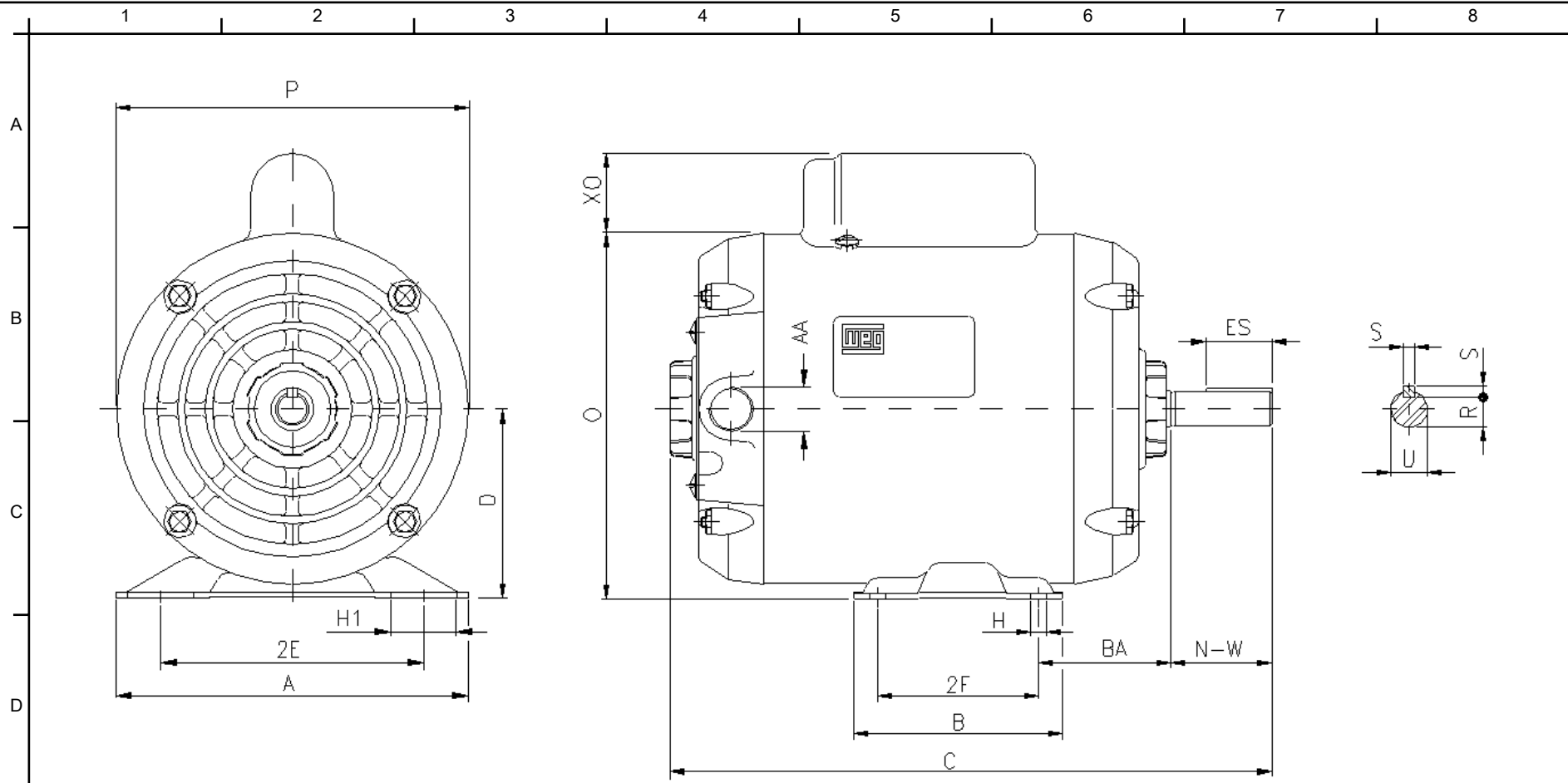
Customer :
Product line : Single-Phase : NEMA 48 & 56 ODP - Start Capacitor

Frame	: D56	Locked rotor current (I _l /I _n)	: 7.0
Output	: 1 HP	Duty cycle	: S1
Frequency	: 60 Hz	Service factor	: 1.25 (1.00 at 208V)
Full load speed	: 3520 rpm	Design	: ---
Voltage	: 115/208-230 V	Locked rotor torque	: 280 %
Rated current	: 13.6/6.80-6.80 A	Breakdown torque	: 290 %
Insulation class	: B		

Notes:
Downloaded from <http://dealerselectric.com>
Generated for Model #00136OS1BD56

Performed by

Checked



Notes: Downloaded from <http://dealerselectric.com>
 Generated for Model #00136OS1BD56

Performed by:

Checked:

Customer:

Single-Phase : NEMA 48 & 56 ODP - Start Capacitor

2E	2F	H	H1	BA
4.874	3.000	0.342	1.220	2.750
A	B	C	D	O
6.535	4.016	12.283	3.500	6.732
XO	P	ES	S	N-W
0.000	6.457	1.102	0.187	1.874
U	R	AA	d1	AH
0.6250	0.517	NPT 1/2"	A 3.15	2.063

Single-phase induction motor
 Frame D56 - IP21

12-SEP-2016

