



Dealers Industrial Equipment

No.:

Date: 12-SEP-2016

Customer :

TECHNICAL PROPOSAL

Three-phase induction motor - Squirrel cage rotor

Product line : Close Coupled Pump: Three-Phase - W01 (Rolled Steel) "JP" Type - ODP - High Efficiency
Catalog Number : 00118OP3E143JP-S
List Price : \$437

Notes:

Downloaded from <http://dealerselectric.com>
Generated for Model #00118OP3E143JP-S

Performed by:

Checked:



Dealers Industrial Equipment

No.:

Date: 12-SEP-2016

DATA SHEET Three-phase induction motor - Squirrel cage rotor

Customer :
 Product line : Close Coupled Pump: Three-Phase - W01 (Rolled Steel) "JP" Type - ODP - High Efficiency

Frame : 143/5JP
 Output : 1 HP
 Frequency : 60 Hz
 Poles : 4
 Full load speed : 1760 rpm
 Slip : 2.22 %
 Voltage : 208-230/460 V
 Rated current : 3.60-3.26/1.63 A
 Locked rotor current : 24.1/12.1 A
 Locked rotor current (I_L/I_n) : 7.4
 No-load current : 2.37/1.18 A
 Full load torque : 2.94 lb.ft
 Locked rotor torque : 280 %
 Breakdown torque : 330 %
 Design : B
 Insulation class : F
 Temperature rise : 80 K
 Locked rotor time : ---
 Service factor : 1.15
 Duty cycle : S1
 Ambient temperature : -20°C - +40°C
 Altitude : 1000 m
 Degree of Protection : ODP
 Approximate weight : 30 lb
 Moment of inertia : 0.09065 sq.ft.lb
 Noise level : 52 dB(A)

| | D.E. | N.D.E. | Load | Power factor | Efficiency (%) |
|---------------------|---------|---------|------|--------------|----------------|
| Bearings | 6206 ZZ | 6203 ZZ | 100% | 0.70 | 82.5 |
| Regreasing interval | --- | --- | 75% | 0.60 | 81.5 |
| Grease amount | --- | --- | 50% | 0.46 | 77.0 |

Notes:
 Downloaded from <http://dealerselectric.com>
 Generated for Model #00118OP3E143JP-S

Performed by

Checked



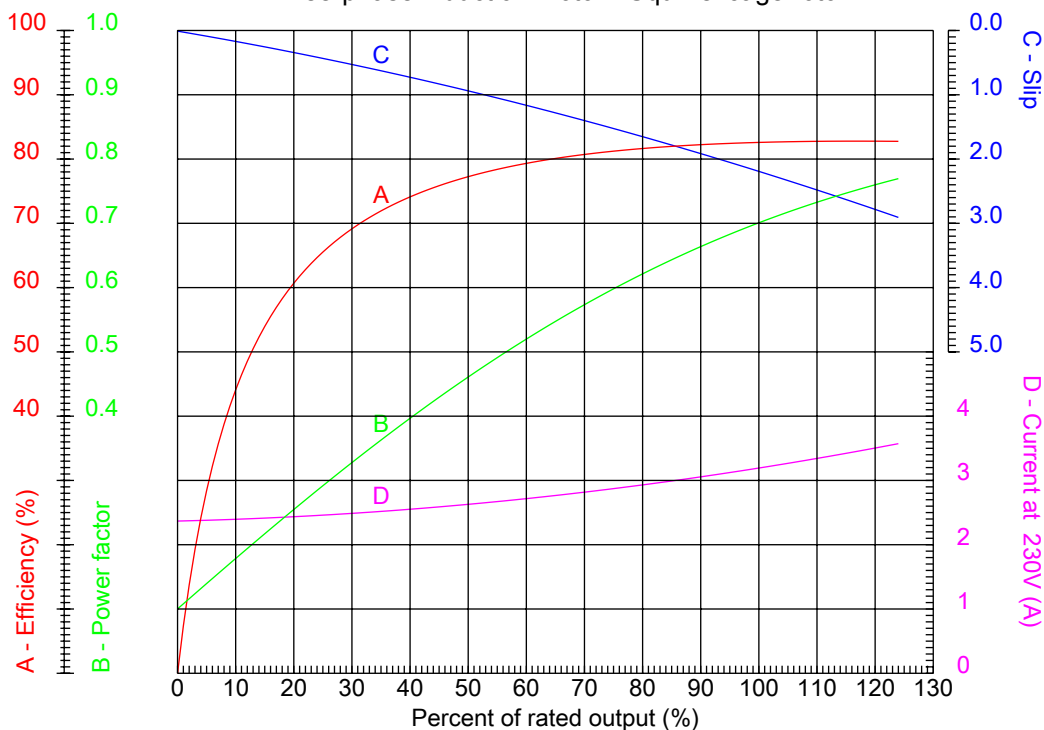
Dealers Industrial Equipment

No.:

Date: 12-SEP-2016

PERFORMANCE CURVES RELATED TO RATED OUTPUT

Three-phase induction motor - Squirrel cage rotor



Customer :
Product line : Close Coupled Pump: Three-Phase - W01 (Rolled Steel) "JP" Type - ODP - High Efficiency

| | | | |
|------------------|--------------------|--|---------|
| Frame | : 143/5JP | Locked rotor current (I _l /I _n) | : 7.4 |
| Output | : 1 HP | Duty cycle | : S1 |
| Frequency | : 60 Hz | Service factor | : 1.15 |
| Full load speed | : 1760 rpm | Design | : B |
| Voltage | : 208-230/460 V | Locked rotor torque | : 280 % |
| Rated current | : 3.60-3.26/1.63 A | Breakdown torque | : 330 % |
| Insulation class | : F | | |

Notes:
Downloaded from <http://dealerselectric.com>
Generated for Model #00118OP3E143JP-S

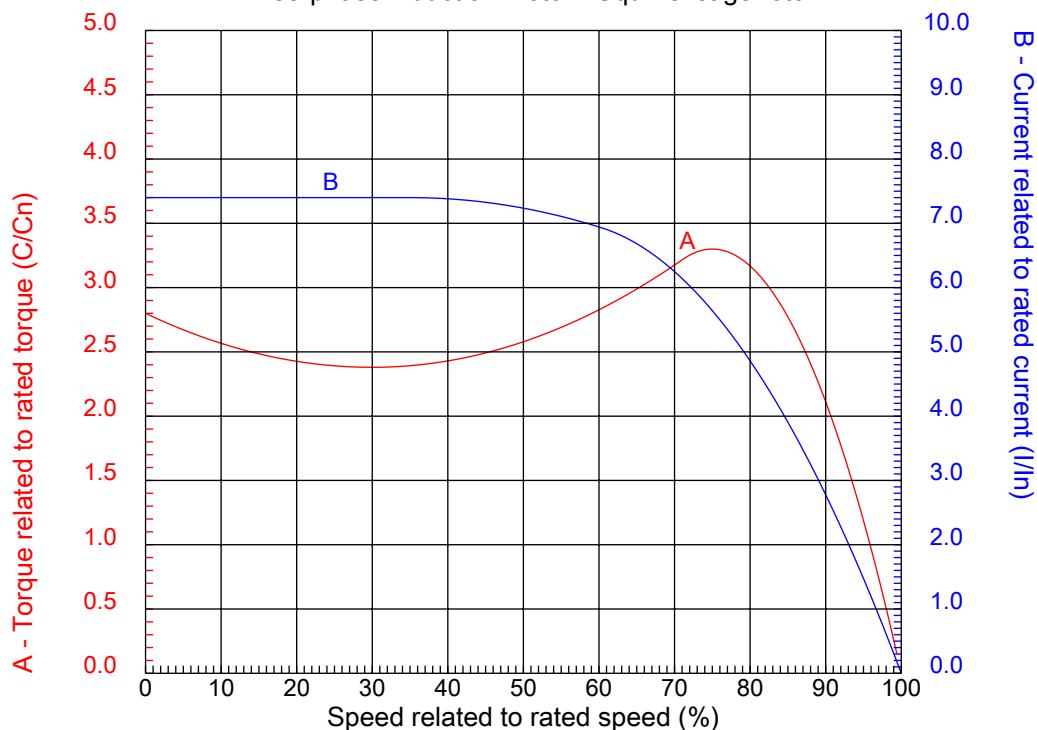
Performed by

Checked



CHARACTERISTIC CURVES RELATED TO SPEED

Three-phase induction motor - Squirrel cage rotor



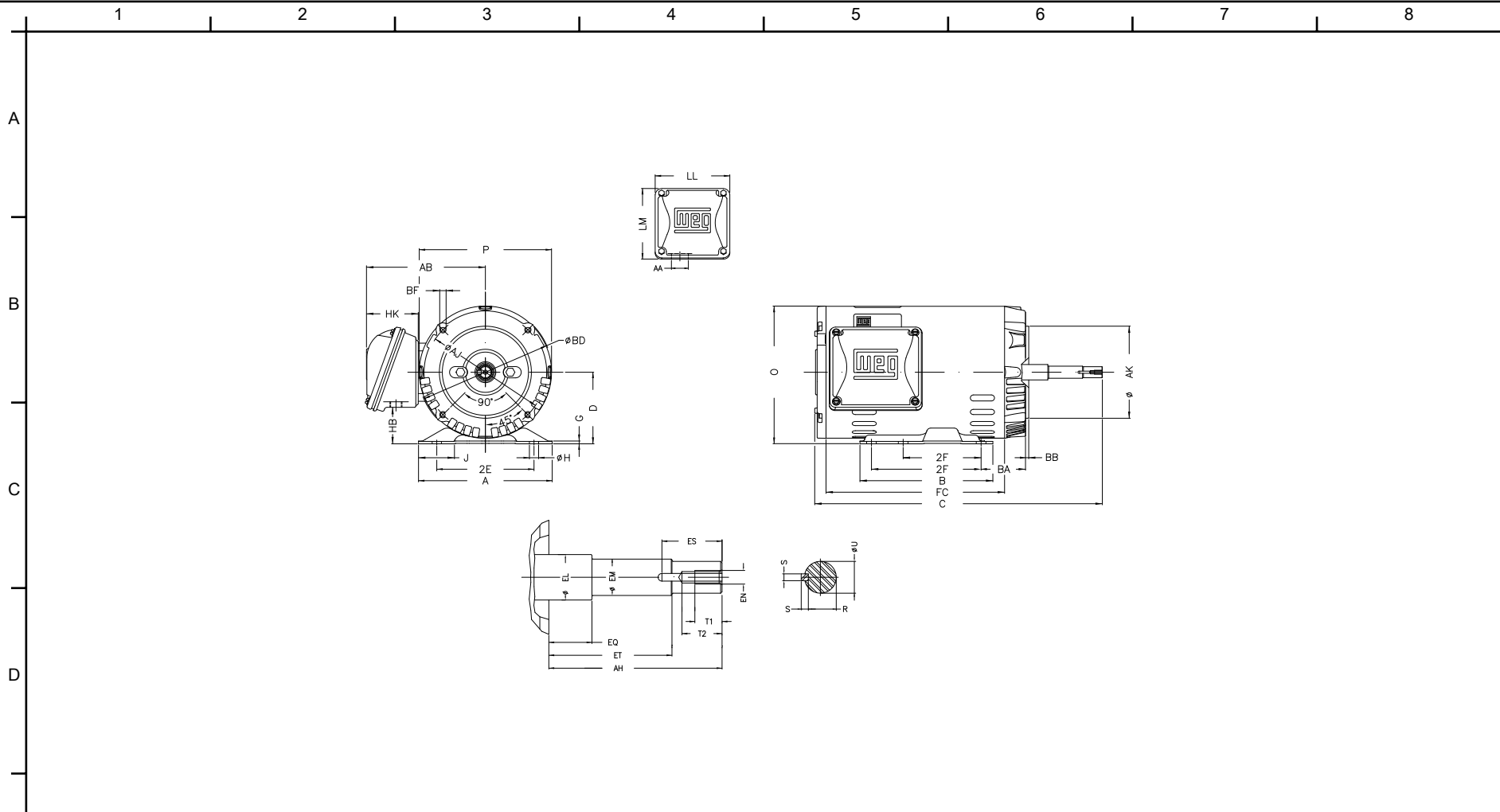
Customer :
Product line : Close Coupled Pump: Three-Phase - W01 (Rolled Steel) "JP" Type - ODP - High Efficiency

| | | | |
|------------------|--------------------|--|---------|
| Frame | : 143/5JP | Locked rotor current (I _l /I _n) | : 7.4 |
| Output | : 1 HP | Duty cycle | : S1 |
| Frequency | : 60 Hz | Service factor | : 1.15 |
| Full load speed | : 1760 rpm | Design | : B |
| Voltage | : 208-230/460 V | Locked rotor torque | : 280 % |
| Rated current | : 3.60-3.26/1.63 A | Breakdown torque | : 330 % |
| Insulation class | : F | | |

Notes:
Downloaded from <http://dealerselectric.com>
Generated for Model #00118OP3E143JP-S

Performed by

Checked



Notes: Downloaded from <http://dealerselectric.com>
 Generated for Model #001180P3E143JP-S

| | | | | |
|-------------------|-------------------|------------------|--------------|-------------|
| 2E 5.500 | J 1.732 | A 6.535 | P 6.456 | AB 5.873 |
| 2F 4.000/5.000 | B 6.496 | BA 2.750 | D 3.500 | G 0.120 |
| O 6.724 | T 0.004 | H 0.343 | AA 1.118" | ER 7.319 |
| EQ 1.563 | ET 5.941 | U 0.8745 | EM 1.000 | EL 1.156 |
| EP 1.179 | ES 1.654 | t1 0.787 | t2 1.102 | C 16.772 |
| CH 1.377 | FC 7.874 | Flange FC-149 | AJ 5.874 | AK 4.500 |
| BD 6.450 | BF UNC 3/8"x16 | BB 0.157 | AH 7.319 | |

Performed by:


Checked:

Customer:

Close Coupled Pump: Three-Phase - W01 (Rolled Steel) "JP" Type - ODP - High

Three-phase induction motor
 Frame 143/5JP - ODP

12-SEP-2016



1 2 3 4 5 6 7 8

A

LOW VOLTAGE

HIGH VOLTAGE

B



C



D

E

F

| | | |
|---|-------------|--|
| Notes: Downloaded from http://dealerselectric.com Generated for Model #00118OP3E143JP-S | | |
| Performed by: | | |
| Checked: | | |
| Customer: | | |
| Close Coupled Pump: Three-Phase - W01 (Rolled Steel) "JP" Type - ODP - High | | |
| Three-phase induction motor Frame 143/5JP - IP21 | 12-SEP-2016 | |