



# Dealers Industrial Equipment

No.:

Date: 12-SEP-2016

Customer :

## TECHNICAL PROPOSAL

### Single-phase induction motor - Squirrel cage rotor

Product line : Single Phase: W01 (Rolled Steel) - ODP - Premium Efficiency (DOE)

Catalog Number : .7536OT1B56C-S

List Price : \$348

#### Notes:

Downloaded from <http://dealerselectric.com>

Generated for Model #.7536OT1B56C-S

Performed by:

Checked:



Dealers Industrial Equipment

No.:

Date: 12-SEP-2016

## DATA SHEET

### Single-phase induction motor - Squirrel cage rotor

Customer :  
Product line : Single Phase: W01 (Rolled Steel) - ODP - Premium Efficiency (DOE)

Frame : 56  
Output : 0.75 HP  
Frequency : 60 Hz  
Poles : 2  
Full load speed : 3510 rpm  
Slip : 2.50 %  
Voltage : 115/208-230 V  
Rated current : 6.80/3.76-3.40 A  
Locked rotor current : 58.5/29.2 A  
Locked rotor current (I<sub>L</sub>/I<sub>n</sub>) : 8.6  
No-load current : 2.40/1.20 A  
Full load torque : 1.11 lb.ft  
Locked rotor torque : 300 %  
Breakdown torque : 300 %  
Design : ---  
Insulation class : F  
Temperature rise : 80 K  
Locked rotor time : 18 s (hot)  
Service factor : 1.25  
Duty cycle : S1  
Ambient temperature : -20°C - +40°C  
Altitude : 1000 m  
Degree of Protection : ODP  
Approximate weight : 25 lb  
Moment of inertia : 0.04343 sq.ft.lb  
Noise level : 58 dB(A)

	D.E.	N.D.E.	Load	Power factor	Efficiency (%)
Bearings	6203 ZZ	6202 ZZ	100%	0.93	76.2
Regreasing interval	---	---	75%	0.92	71.0
Grease amount	---	---	50%	0.88	64.0

#### Notes:

Downloaded from <http://dealerselectric.com>  
Generated for Model #.7536OT1B56C-S

Performed by

Checked



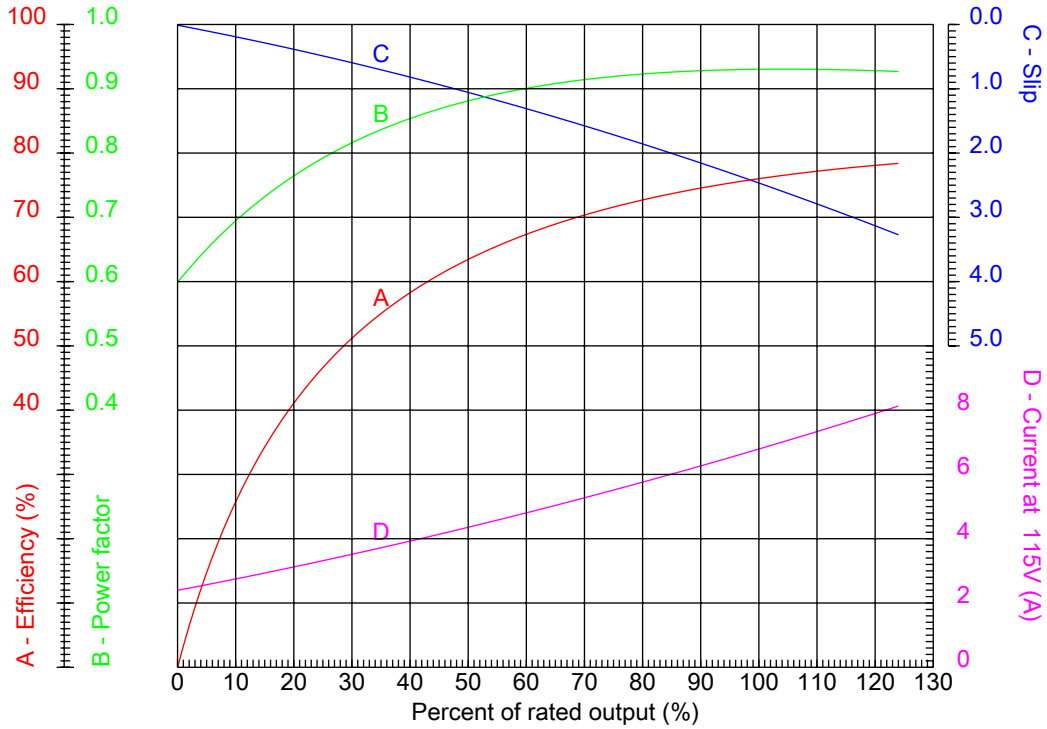
# Dealers Industrial Equipment

No.:

Date: 12-SEP-2016

## PERFORMANCE CURVES RELATED TO RATED OUTPUT

Single-phase induction motor - Squirrel cage rotor



Customer :  
 Product line : Single Phase: W01 (Rolled Steel) - ODP - Premium Efficiency (DOE)

Frame	: 56	Locked rotor current (I <sub>l</sub> /I <sub>n</sub> )	: 8.6
Output	: 0.75 HP	Duty cycle	: S1
Frequency	: 60 Hz	Service factor	: 1.25
Full load speed	: 3510 rpm	Design	: ---
Voltage	: 115/208-230 V	Locked rotor torque	: 300 %
Rated current	: 6.80/3.76-3.40 A	Breakdown torque	: 300 %
Insulation class	: F		

Notes:  
 Downloaded from <http://dealerselectric.com>  
 Generated for Model #.7536OT1B56C-S

Performed by

Checked

1 2 3 4 5 6 7 8

A

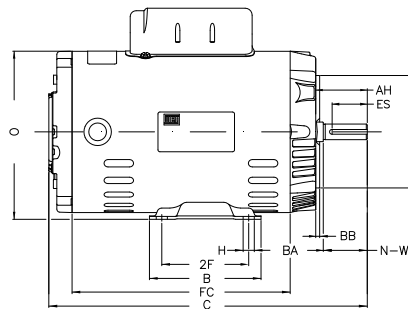
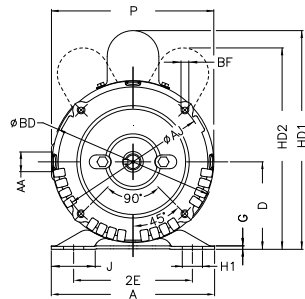
B

C

D

E

F



Notes: Downloaded from <http://dealerselectric.com>  
Generated for Model #.7536OT1B56C-S

Performed by:

Checked:

Customer:

Single Phase: W01 (Rolled Steel) - ODP - Premium Efficiency (DOE)

Single-phase induction motor  
Frame 56 - ODP

12-SEP-2016



P 6.456	J 1.732	2E 4.874	A 6.535	H 0.343
G 0.120	FC 7.874	2F 3.000	B 4.016	C 11.89
BA 2.750	N-W 1.874	ES 1.417	d1 A 3,15	S 0.187
U 0.625	AA NPT 1/2"	depth 0.187	R 0.517	D 3.500
XO 0.004	HD2 8.150	O 6.724	HC2 4.650	Flange FC-149
AJ 5.874	AK 4.500	BD 6.450	BF UNC 3/8"x16-2B	BB 0.157
AH 2.062				