



Dealers Industrial Equipment

No.:

Date: 12-SEP-2016

Customer :

TECHNICAL PROPOSAL

Three-phase induction motor - Squirrel cage rotor

Product line : Jet Pump: Three-Phase - W01 (Rolled Steel) - Keyed - ODP - Standard Efficiency

Catalog Number : .7536OS3EJPR56C-S

List Price : \$257

Notes:

Downloaded from <http://dealerselectric.com>

Generated for Model #.7536OS3EJPR56C-S

Performed by:

Checked:



Dealers Industrial Equipment

No.:

Date: 12-SEP-2016

DATA SHEET Three-phase induction motor - Squirrel cage rotor

Customer :
 Product line : Jet Pump: Three-Phase - W01 (Rolled Steel) - Keyed - ODP - Standard Efficiency

Frame : 56C
 Output : 0.75 HP
 Frequency : 60 Hz
 Poles : 2
 Full load speed : 3475 rpm
 Slip : 3.47 %
 Voltage : 208-230/460 V
 Rated current : 2.74-2.48/1.24 A
 Locked rotor current : 15.4/7.69 A
 Locked rotor current (I_L/I_n) : 6.2
 No-load current : 1.60/0.800 A
 Full load torque : 1.12 lb.ft
 Locked rotor torque : 210 %
 Breakdown torque : 260 %
 Design : A
 Insulation class : F
 Temperature rise : 80 K
 Locked rotor time : 27 s (hot)
 Service factor : 1.50
 Duty cycle : S1
 Ambient temperature : -20°C - +40°C
 Altitude : 1000 m
 Degree of Protection : ODP
 Approximate weight : 19 lb
 Moment of inertia : 0.04532 sq.ft.lb
 Noise level : 62 dB(A)

| | D.E. | N.D.E. |
|---------------------|---------|---------|
| Bearings | 6203 ZZ | 6202 ZZ |
| Regreasing interval | --- | --- |
| Grease amount | --- | --- |

| Load | Power factor | Efficiency (%) |
|------|--------------|----------------|
| 100% | 0.79 | 70.0 |
| 75% | 0.70 | 68.5 |
| 50% | 0.57 | 64.0 |

Notes:
 Downloaded from <http://dealerselectric.com>
 Generated for Model #.7536OS3EJPR56C-S

Performed by

Checked



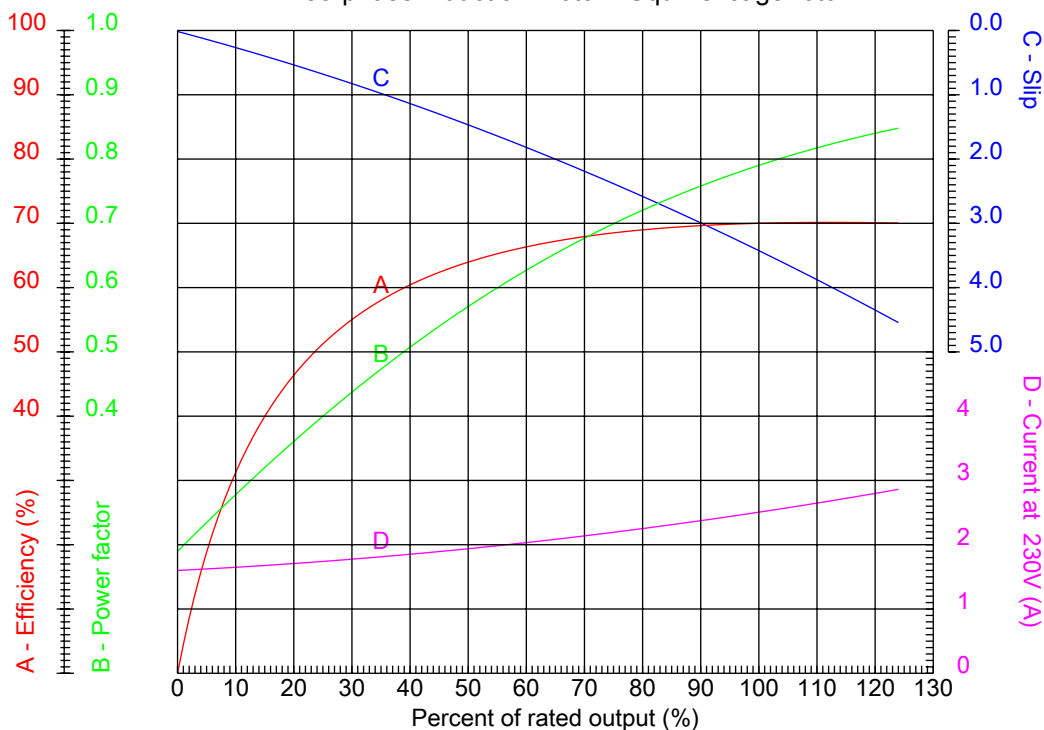
Dealers Industrial Equipment

No.:

Date: 12-SEP-2016

PERFORMANCE CURVES RELATED TO RATED OUTPUT

Three-phase induction motor - Squirrel cage rotor



Customer :
 Product line : Jet Pump: Three-Phase - W01 (Rolled Steel) - Keyed - ODP - Standard Efficiency

| | | | |
|------------------|--------------------|--|---------|
| Frame | : 56C | Locked rotor current (I _l /I _n) | : 6.2 |
| Output | : 0.75 HP | Duty cycle | : S1 |
| Frequency | : 60 Hz | Service factor | : 1.50 |
| Full load speed | : 3475 rpm | Design | : A |
| Voltage | : 208-230/460 V | Locked rotor torque | : 210 % |
| Rated current | : 2.74-2.48/1.24 A | Breakdown torque | : 260 % |
| Insulation class | : F | | |

Notes:
 Downloaded from <http://dealerselectric.com>
 Generated for Model #.7536OS3EJPR56C-S

Performed by

Checked



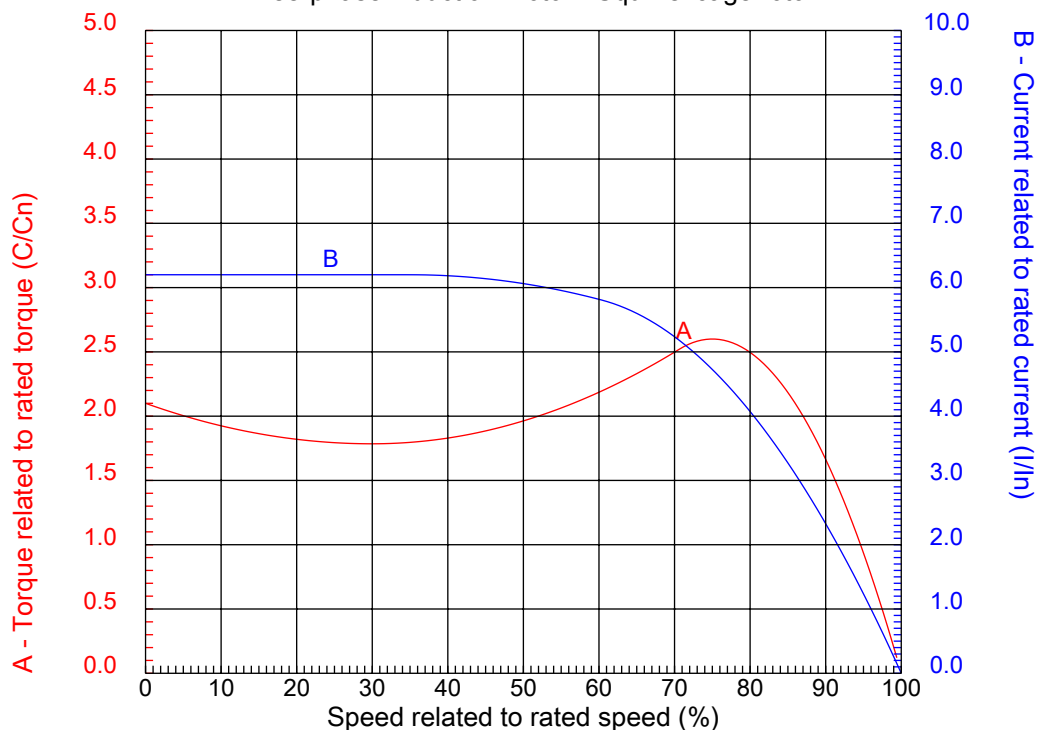
Dealers Industrial Equipment

No.:

Date: 12-SEP-2016

CHARACTERISTIC CURVES RELATED TO SPEED

Three-phase induction motor - Squirrel cage rotor



Customer :
Product line : Jet Pump: Three-Phase - W01 (Rolled Steel) - Keyed - ODP - Standard Efficiency

| | | | |
|------------------|--------------------|--|---------|
| Frame | : 56C | Locked rotor current (I _l /I _n) | : 6.2 |
| Output | : 0.75 HP | Duty cycle | : S1 |
| Frequency | : 60 Hz | Service factor | : 1.50 |
| Full load speed | : 3475 rpm | Design | : A |
| Voltage | : 208-230/460 V | Locked rotor torque | : 210 % |
| Rated current | : 2.74-2.48/1.24 A | Breakdown torque | : 260 % |
| Insulation class | : F | | |

Notes:
Downloaded from <http://dealerselectric.com>
Generated for Model #.7536OS3EJPR56C-S

Performed by

Checked

1 2 3 4 5 6 7 8

A

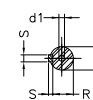
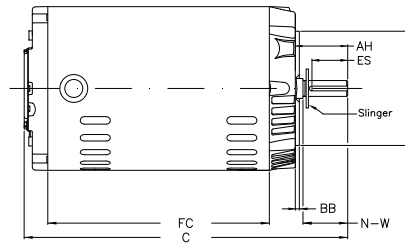
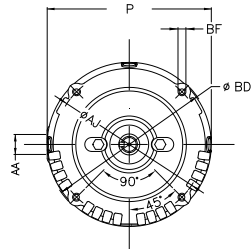
B

C

D

E

F



Notes: Downloaded from <http://dealerselectric.com>
Generated for Model #.7536OS3EJPR56C-S

Performed by:

Checked:

Customer:

Jet Pump: Three-Phase - W01 (Rolled Steel) - Keyed - ODP - Standard Efficiency

| | | | | |
|--------|----------------|----------|-------|-------|
| P | AB | AA | U | ES |
| 6.456 | 5.882 | NPT 1/2" | 0.625 | 1.417 |
| C | FC | Flange | AJ | AK |
| 10.709 | 6.693 | FC-149 | 5.874 | 4.500 |
| BD | BF | BB | AH | |
| 6.450 | UNC 3/8"x16-2B | 0.157 | 2.062 | |

Three-phase induction motor
Frame 56C - ODP

12-SEP-2016

