



Dealers Industrial Equipment

No.:

Date: 12-SEP-2016

Customer :

TECHNICAL PROPOSAL

Three-phase induction motor - Squirrel cage rotor

Product line : Jet Pump: Three-Phase - W01 (Rolled Steel) - Threaded - ODP - Standard  
Efficiency  
Catalog Number : .7536OS3EJP56J-S  
List Price : \$271

Notes:  
Downloaded from <http://dealerselectric.com>  
Generated for Model #.7536OS3EJP56J-S

Performed by:

Checked:



# Dealers Industrial Equipment

No.:

Date: 12-SEP-2016

## DATA SHEET Three-phase induction motor - Squirrel cage rotor

Customer :  
 Product line : Jet Pump: Three-Phase - W01 (Rolled Steel) - Threaded - ODP - Standard Efficiency

Frame : 56J  
 Output : 0.75 HP  
 Frequency : 60 Hz  
 Poles : 2  
 Full load speed : 3475 rpm  
 Slip : 3.47 %  
 Voltage : 208-230/460 V  
 Rated current : 2.74-2.48/1.24 A  
 Locked rotor current : 15.4/7.69 A  
 Locked rotor current (I<sub>L</sub>/I<sub>n</sub>) : 6.2  
 No-load current : 1.60/0.800 A  
 Full load torque : 1.12 lb.ft  
 Locked rotor torque : 210 %  
 Breakdown torque : 260 %  
 Design : A  
 Insulation class : F  
 Temperature rise : 80 K  
 Locked rotor time : 27 s (hot)  
 Service factor : 1.50  
 Duty cycle : S1  
 Ambient temperature : -20°C - +40°C  
 Altitude : 1000 m  
 Degree of Protection : ODP  
 Approximate weight : 19 lb  
 Moment of inertia : 0.04532 sq.ft.lb  
 Noise level : 62 dB(A)

	D.E.	N.D.E.	Load	Power factor	Efficiency (%)
Bearings	6203 ZZ	6202 ZZ	100%	0.79	70.0
Regreasing interval	---	---	75%	0.70	68.5
Grease amount	---	---	50%	0.57	64.0

Notes:  
 Downloaded from <http://dealerselectric.com>  
 Generated for Model #.7536OS3EJP56J-S

Performed by

Checked



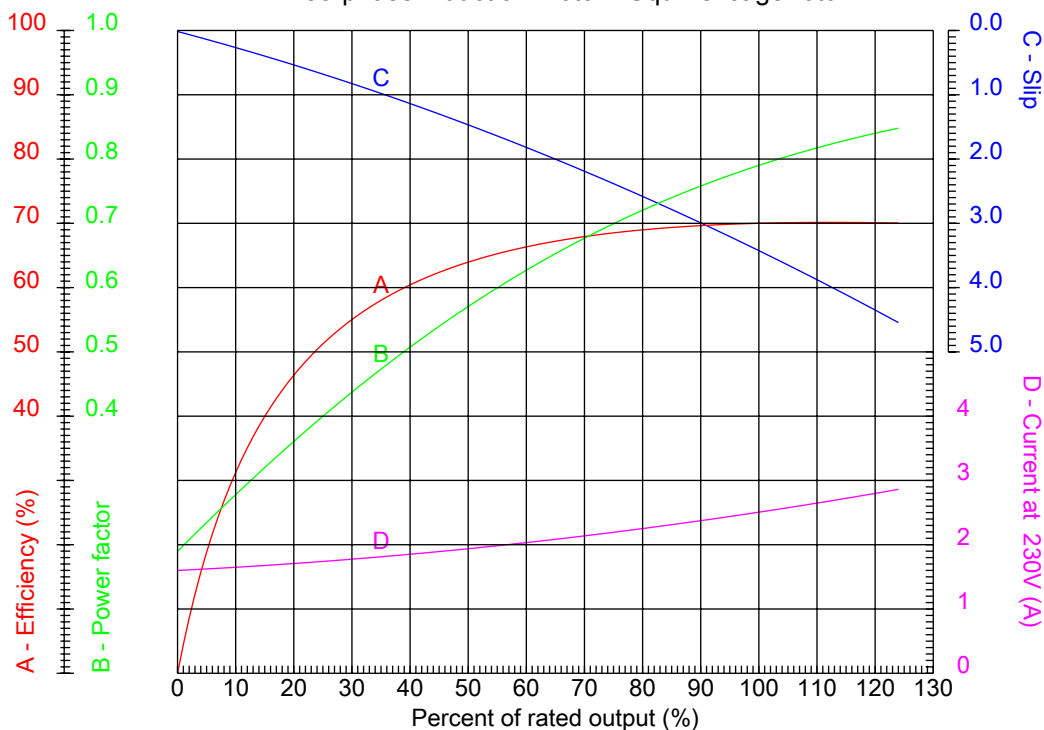
# Dealers Industrial Equipment

No.:

Date: 12-SEP-2016

## PERFORMANCE CURVES RELATED TO RATED OUTPUT

Three-phase induction motor - Squirrel cage rotor



Customer :  
 Product line : Jet Pump: Three-Phase - W01 (Rolled Steel) - Threaded - ODP - Standard Efficiency

Frame : 56J	Locked rotor current (I <sub>L</sub> /I <sub>n</sub> ) : 6.2
Output : 0.75 HP	Duty cycle : S1
Frequency : 60 Hz	Service factor : 1.50
Full load speed : 3475 rpm	Design : A
Voltage : 208-230/460 V	Locked rotor torque : 210 %
Rated current : 2.74-2.48/1.24 A	Breakdown torque : 260 %
Insulation class : F	

Notes:  
 Downloaded from <http://dealerselectric.com>  
 Generated for Model #.7536OS3EJP56J-S

Performed by

Checked



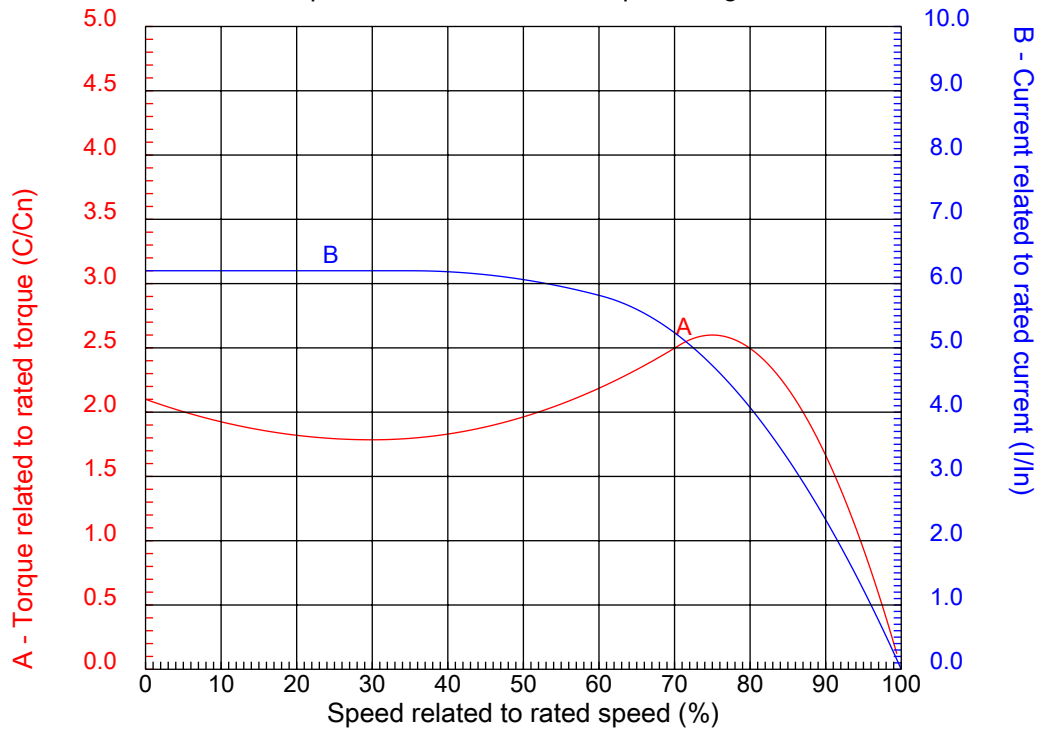
# Dealers Industrial Equipment

No.:

Date: 12-SEP-2016

## CHARACTERISTIC CURVES RELATED TO SPEED

Three-phase induction motor - Squirrel cage rotor



Customer :  
Product line : Jet Pump: Three-Phase - W01 (Rolled Steel) - Threaded - ODP - Standard Efficiency

Frame	: 56J	Locked rotor current (I <sub>l</sub> /I <sub>n</sub> )	: 6.2
Output	: 0.75 HP	Duty cycle	: S1
Frequency	: 60 Hz	Service factor	: 1.50
Full load speed	: 3475 rpm	Design	: A
Voltage	: 208-230/460 V	Locked rotor torque	: 210 %
Rated current	: 2.74-2.48/1.24 A	Breakdown torque	: 260 %
Insulation class	: F		

Notes:  
Downloaded from <http://dealerselectric.com>  
Generated for Model #.7536OS3EJP56J-S

Performed by

Checked

1 2 3 4 5 6 7 8

A

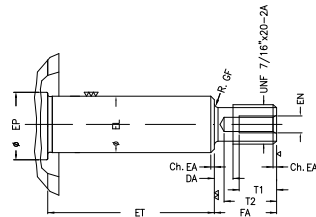
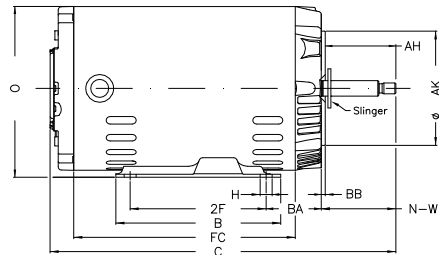
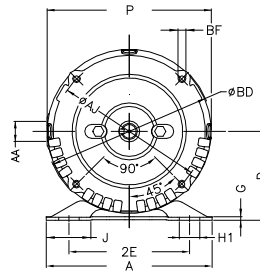
B

C

D

E

F



Notes: Downloaded from <http://dealerselectric.com>  
Generated for Model #.7536OS3EJP56J-S

Performed by:

Checked:

Customer:

Jet Pump: Three-Phase - W01 (Rolled Steel) - Threaded - ODP - Standard

Three-phase induction motor  
Frame 56J - ODP

12-SEP-2016



2E 4.874	J 1.732	A 6.535	P 6.456	AB 5.882
2F 3.000	B 4.016	BA 2.559	D 3.500	G 0.120
O 6.724	T 0.004	H 0.343	AA NPT 1/2"	ET 1.874
U 0.625	EL 0.625	EP 0.665	t1 0.472	t2 0.590
C 11.220	FC 6.693	Flange FC-149	AJ 5.874	AK 4.500
BD 6.450	BF UNC 3/8"x16-2B	BB 0.157	AH 2.562	