



# Dealers Industrial Equipment

No.:

Date: 12-SEP-2016

Customer :

## TECHNICAL PROPOSAL

### Single-phase induction motor - Squirrel cage rotor

Product line : Compressor Duty : Single-Phase - ODP

Catalog Number : .7536OS1BCDC56

List Price : \$237

#### Notes:

Downloaded from <http://dealerselectric.com>

Generated for Model #.7536OS1BCDC56

Performed by:

Checked:



# Dealers Industrial Equipment

No.:

Date: 12-SEP-2016

## DATA SHEET Single-phase induction motor - Squirrel cage rotor

Customer :  
Product line : Compressor Duty : Single-Phase - ODP

Frame : C56  
Output : 0.75 HP  
Frequency : 60 Hz  
Poles : 2  
Full load speed : 3400 rpm  
Slip : 5.56 %  
Voltage : 115/208-230 V  
Rated current : 9.20/5.00-4.60 A  
Locked rotor current : 43.2/21.6 A  
Locked rotor current (I<sub>L</sub>/I<sub>n</sub>) : 4.7  
No-load current : 5.20/2.60 A  
Full load torque : 1.14 lb.ft  
Locked rotor torque : 250 %  
Breakdown torque : 190 %  
Design : ---  
Insulation class : B  
Temperature rise : 80 K  
Locked rotor time : 6 s (hot)  
Service factor : 1.00 (1.00 at 208V)  
Duty cycle : COMPRESSOR  
Ambient temperature : -20°C - +40°C  
Altitude : 1000 m  
Degree of Protection : IP21  
Approximate weight : 24 lb  
Moment of inertia : 0.02326 sq.ft.lb  
Noise level : ---

	D.E.	N.D.E.
Bearings	6203 ZZ	6202 ZZ
Regreasing interval	---	---
Grease amount	---	---

Load	Power factor	Efficiency (%)
100%	0.80	66.0
75%	0.72	65.0
50%	0.61	62.0

Notes:  
Downloaded from <http://dealerselectric.com>  
Generated for Model #.7536OS1BCDC56

Performed by

Checked



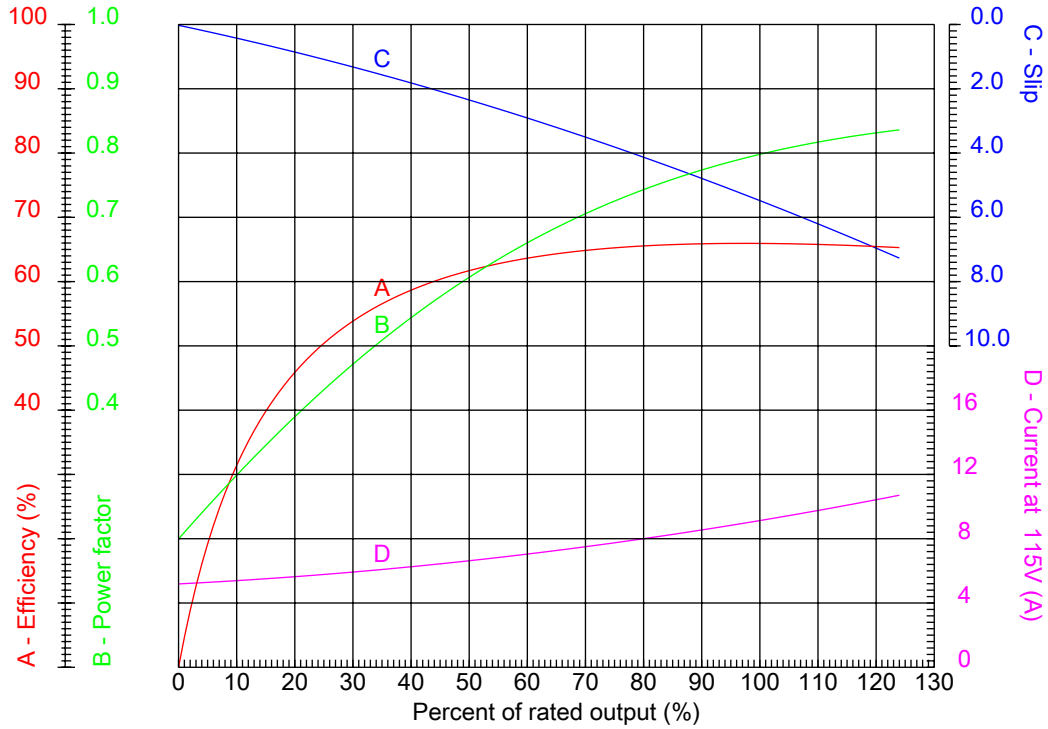
# Dealers Industrial Equipment

No.:

Date: 12-SEP-2016

## PERFORMANCE CURVES RELATED TO RATED OUTPUT

Single-phase induction motor - Squirrel cage rotor



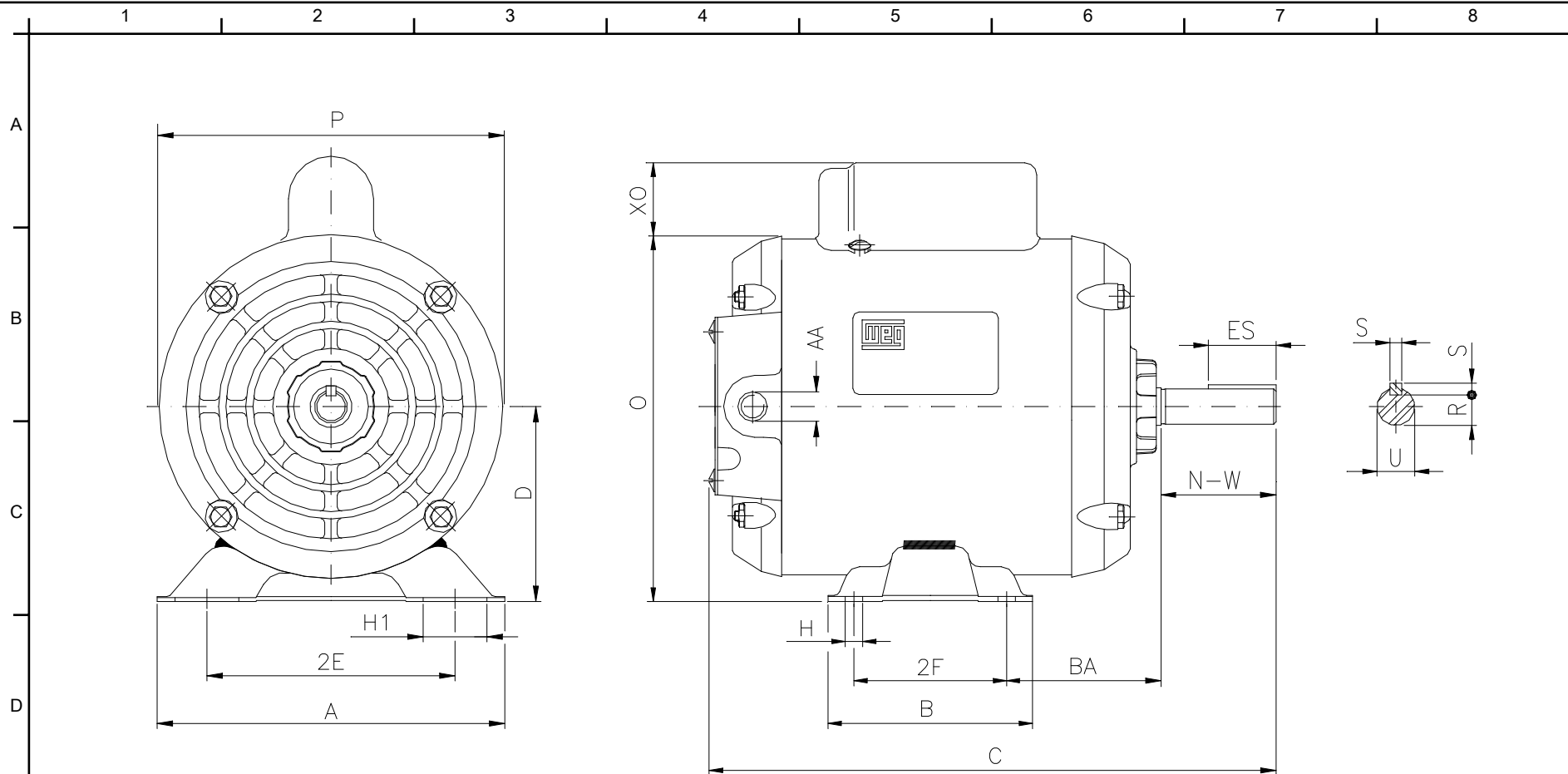
Customer :  
 Product line : Compressor Duty : Single-Phase - ODP

Frame	: C56	Locked rotor current (I <sub>l</sub> /I <sub>n</sub> )	: 4.7
Output	: 0.75 HP	Duty cycle	: COMPRESSOR
Frequency	: 60 Hz	Service factor	: 1.00 (1.00 at 208V)
Full load speed	: 3400 rpm	Design	: ---
Voltage	: 115/208-230 V	Locked rotor torque	: 250 %
Rated current	: 9.20/5.00-4.60 A	Breakdown torque	: 190 %
Insulation class	: B		

Notes:  
 Downloaded from <http://dealerselectric.com>  
 Generated for Model #.7536OS1BCDC56

Performed by

Checked



Notes: Downloaded from <http://dealerselectric.com>  
 Generated for Model #.7536OS1BCDC56

Performed by:

Checked:

Customer:

Compressor Duty : Single-Phase - ODP

2E	2F	H	BA	A
4.874	3.000	0.342	2.748	6.535
B	C	D	J	O
4.016	10.551	3.500	1.220	6.378
P	ES	S	N-W	U
5.709	1.102	0.187	1.874	0.6250
R	AA			
0.517	NPT 1/2"			

Single-phase induction motor  
 Frame C56 - IP21

12-SEP-2016

