



Dealers Industrial Equipment

No.:

Date: 12-SEP-2016

Customer :

TECHNICAL PROPOSAL

Single-phase induction motor - Squirrel cage rotor

Product line : Single-Phase : NEMA 48 & 56 ODP - Start Capacitor

Catalog Number : .7536OS1BB56

List Price : \$274

Notes:

Downloaded from <http://dealerselectric.com>

Generated for Model #.7536OS1BB56

Performed by:

Checked:



Dealers Industrial Equipment

No.:

Date: 12-SEP-2016

DATA SHEET Single-phase induction motor - Squirrel cage rotor

Customer :
 Product line : Single-Phase : NEMA 48 & 56 ODP - Start Capacitor

Frame : B56
 Output : 0.75 HP
 Frequency : 60 Hz
 Poles : 2
 Full load speed : 3525 rpm
 Slip : 2.08 %
 Voltage : 115/208-230 V
 Rated current : 10.5/5.00-5.25 A
 Locked rotor current : 63.0/31.5 A
 Locked rotor current (I_L/I_n) : 6.0
 No-load current : 8.30/4.15 A
 Full load torque : 1.10 lb.ft
 Locked rotor torque : 250 %
 Breakdown torque : 280 %
 Design : ---
 Insulation class : B
 Temperature rise : 80 K
 Locked rotor time : 6 s (hot)
 Service factor : 1.25 (1.00 at 208V)
 Duty cycle : S1
 Ambient temperature : -20°C - +40°C
 Altitude : 1000 m
 Degree of Protection : IP21
 Approximate weight : 28 lb
 Moment of inertia : 0.03322 sq.ft.lb
 Noise level : ---

	D.E.	N.D.E.
Bearings	6204 ZZ	6203 ZZ
Regreasing interval	---	---
Grease amount	---	---

Load	Power factor	Efficiency (%)
100%	0.68	67.2
75%	0.61	64.2
50%	0.52	56.5

Notes:
 Downloaded from <http://dealerselectric.com>
 Generated for Model #.7536OS1BB56

Performed by

Checked



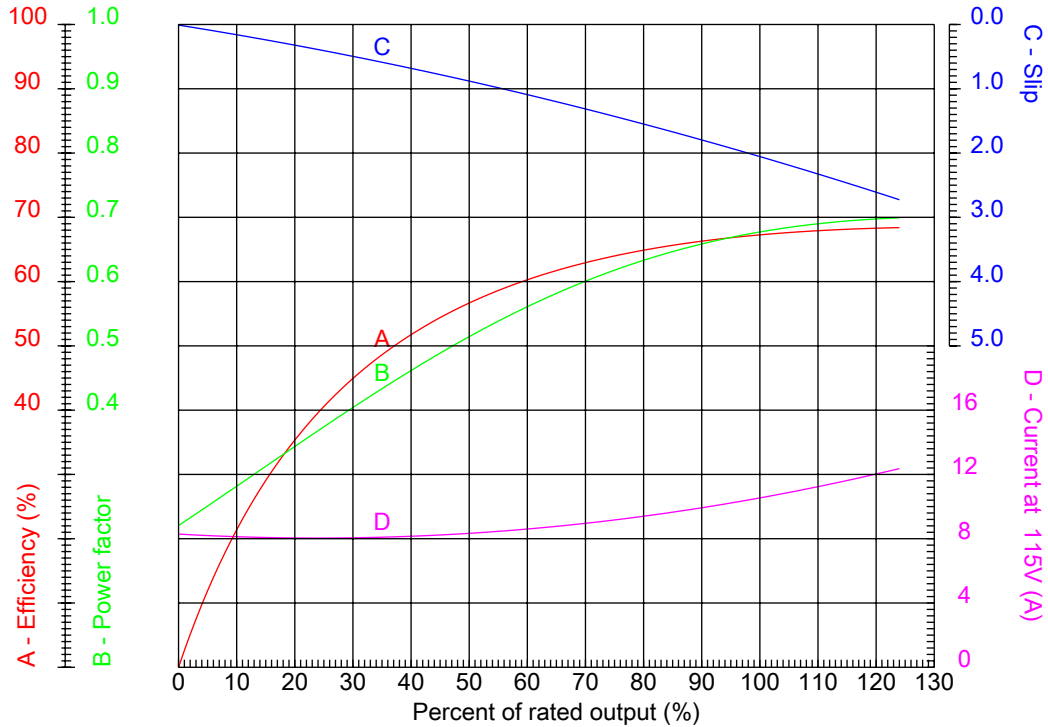
Dealers Industrial Equipment

No.:

Date: 12-SEP-2016

PERFORMANCE CURVES RELATED TO RATED OUTPUT

Single-phase induction motor - Squirrel cage rotor



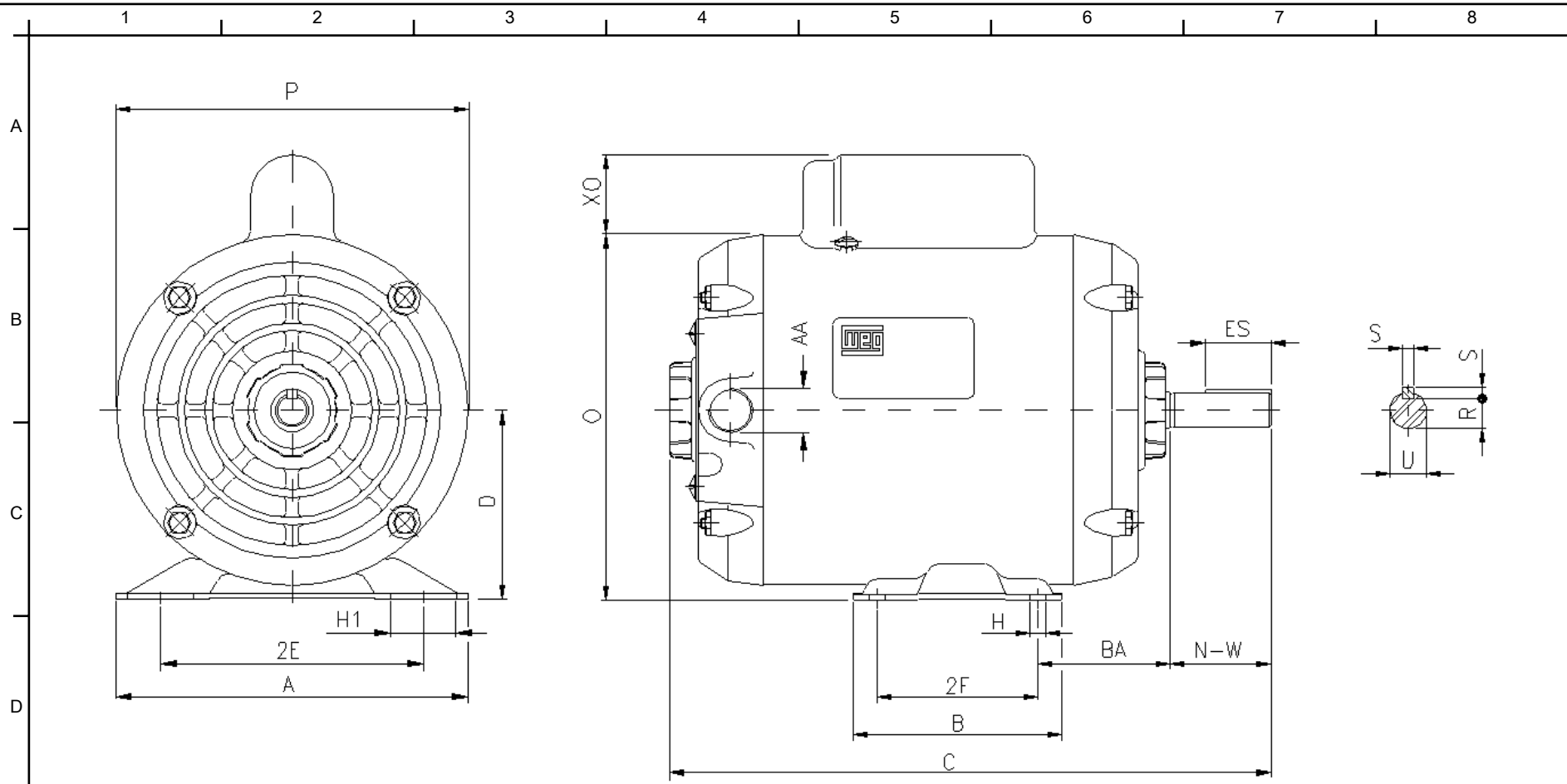
Customer :
 Product line : Single-Phase : NEMA 48 & 56 ODP - Start Capacitor

Frame	: B56	Locked rotor current (I _l /I _n)	: 6.0
Output	: 0.75 HP	Duty cycle	: S1
Frequency	: 60 Hz	Service factor	: 1.25 (1.00 at 208V)
Full load speed	: 3525 rpm	Design	: ---
Voltage	: 115/208-230 V	Locked rotor torque	: 250 %
Rated current	: 10.5/5.00-5.25 A	Breakdown torque	: 280 %
Insulation class	: B		

Notes:
 Downloaded from <http://dealerselectric.com>
 Generated for Model #.7536OS1BB56

Performed by

Checked



Notes: Downloaded from <http://dealerselectric.com>
 Generated for Model #.7536OS1BB56

Performed by:

Checked:

Customer:

Single-Phase : NEMA 48 & 56 ODP - Start Capacitor

2E 4.874	2F 3.000	H 0.342	BA 2.750	A 6.535
B 4.016	C 11.102	D 3.500	O 6.732	XO 0.000
P 6.457	ES 1.102	S 0.187	N-W 1.874	U 0.6250
R 0.517	AA NPT 1/2"	d1 A 3,15	AH 2.063	

Single-phase induction motor
 Frame B56 - IP21

12-SEP-2016

