



Dealers Industrial Equipment

No.:

Date: 12-SEP-2016

Customer :

TECHNICAL PROPOSAL

Single-phase induction motor - Squirrel cage rotor

Product line : Single-Phase : NEMA 48 & 56 ODP - Start Capacitor

Catalog Number : .7518OS1BD56C

List Price : \$349

Notes:

Downloaded from <http://dealerselectric.com>

Generated for Model #.7518OS1BD56C

Performed by:

Checked:



Dealers Industrial Equipment

No.:

Date: 12-SEP-2016

DATA SHEET Single-phase induction motor - Squirrel cage rotor

Customer :
Product line : Single-Phase : NEMA 48 & 56 ODP - Start Capacitor

Frame : D56
Output : 0.75 HP
Frequency : 60 Hz
Poles : 4
Full load speed : 1745 rpm
Slip : 3.06 %
Voltage : 115/208-230 V
Rated current : 11.6/5.78 A
Locked rotor current : 70.5/35.3 A
Locked rotor current (I_L/I_n) : 6.1
No-load current : 8.91/4.46 A
Full load torque : 2.23 lb.ft
Locked rotor torque : 330 %
Breakdown torque : 280 %
Design : ---
Insulation class : B
Temperature rise : 80 K
Locked rotor time : 6 s (hot)
Service factor : 1.25 (1.00 at 208V)
Duty cycle : S1
Ambient temperature : -20°C - +40°C
Altitude : 1000 m
Degree of Protection : IP21
Approximate weight : 30 lb
Moment of inertia : 0.10702 sq.ft.lb
Noise level : ---

	D.E.	N.D.E.
Bearings	6204 ZZ	6203 ZZ
Regreasing interval	---	---
Grease amount	---	---

Load	Power factor	Efficiency (%)
100%	0.62	67.0
75%	0.53	66.0
50%	0.42	59.0

Notes:
Downloaded from <http://dealerselectric.com>
Generated for Model #.7518OS1BD56C

Performed by

Checked



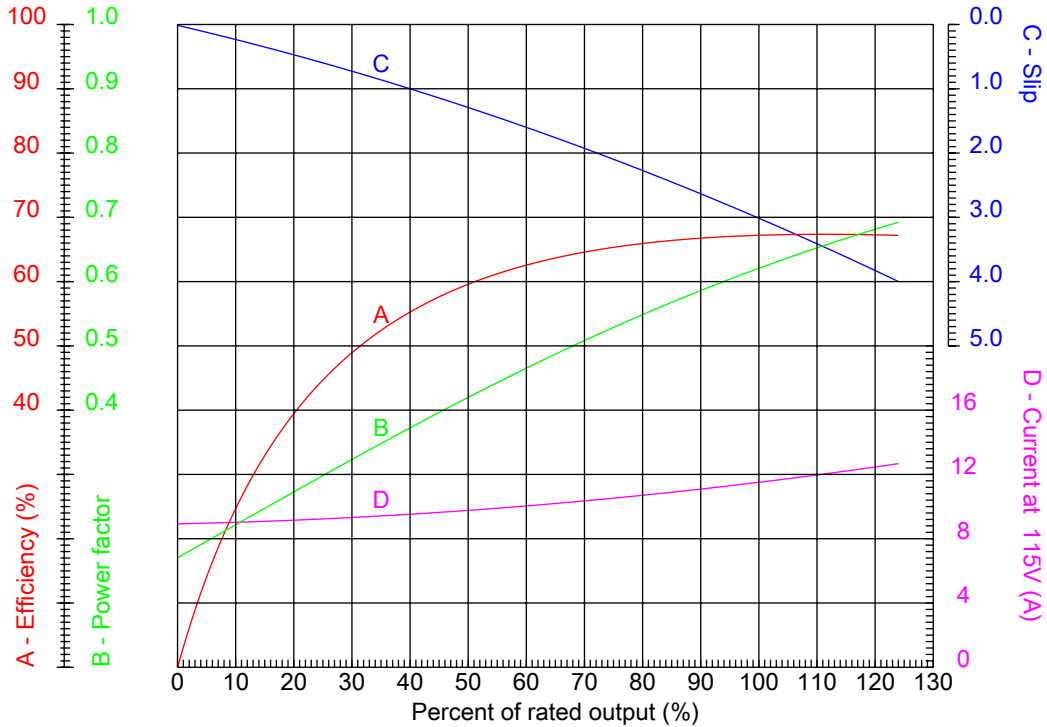
Dealers Industrial Equipment

No.:

Date: 12-SEP-2016

PERFORMANCE CURVES RELATED TO RATED OUTPUT

Single-phase induction motor - Squirrel cage rotor



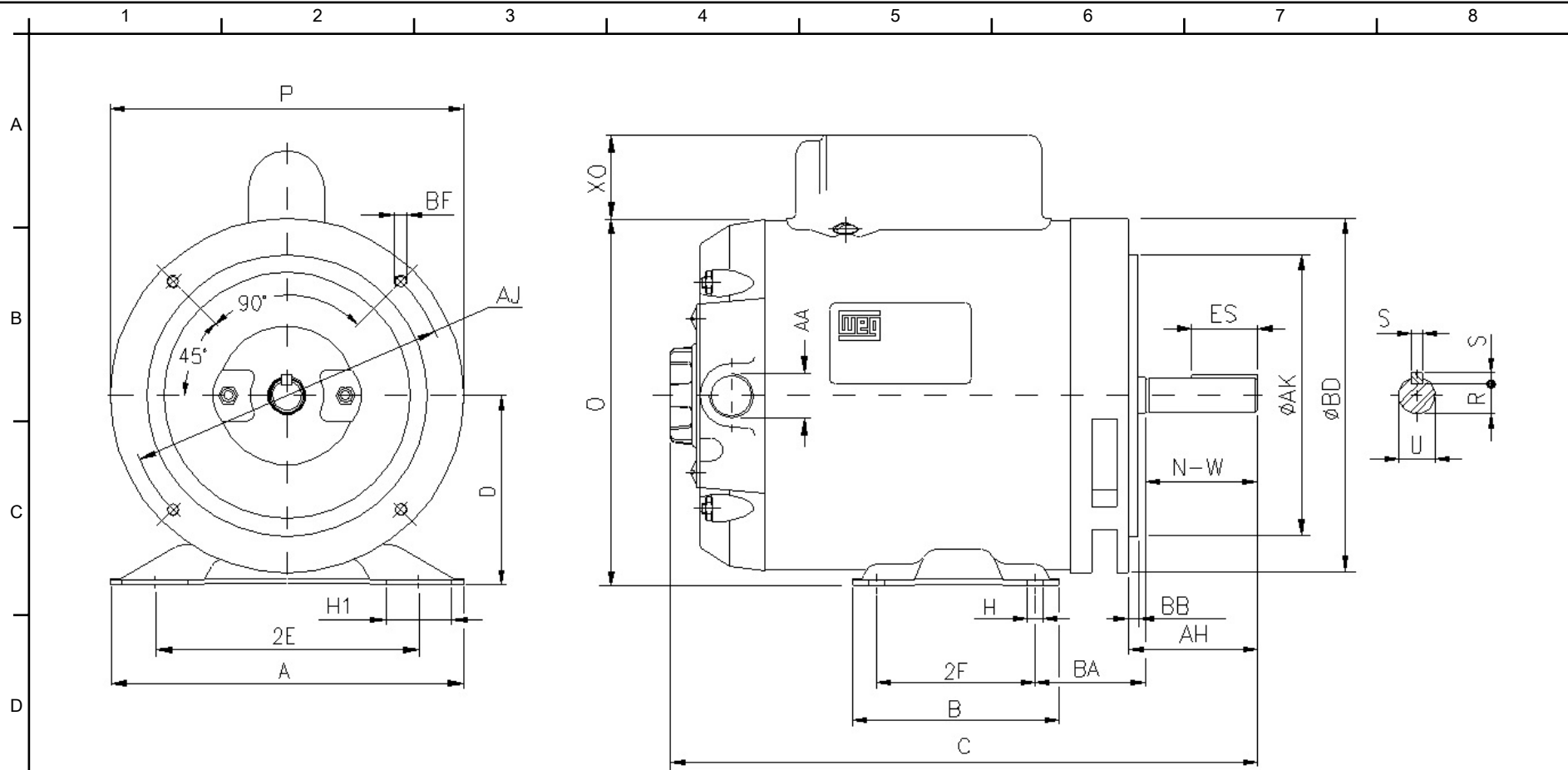
Customer :
 Product line : Single-Phase : NEMA 48 & 56 ODP - Start Capacitor

Frame : D56	Locked rotor current (I _L /I _n) : 6.1
Output : 0.75 HP	Duty cycle : S1
Frequency : 60 Hz	Service factor : 1.25 (1.00 at 208V)
Full load speed : 1745 rpm	Design : ---
Voltage : 115/208-230 V	Locked rotor torque : 330 %
Rated current : 11.6/5.78 A	Breakdown torque : 280 %
Insulation class : B	

Notes:
 Downloaded from <http://dealerselectric.com>
 Generated for Model #.7518OS1BD56C

Performed by

Checked



Notes: Downloaded from <http://dealerselectric.com>
 Generated for Model #.7518OS1BD56C

Performed by:

Checked:

Customer:

Single-Phase : NEMA 48 & 56 ODP - Start Capacitor

Single-phase induction motor

Frame D56 - IP21

12-SEP-2016



2E	2F	H	H1	BA
4.874	3.000	0.342	1.220	2.750
A	B	C	D	O
6.535	4.016	12.283	3.500	6.732
XO	P	ES	S	N-W
0.000	6.457	1.102	0.187	1.874
U	R	AA	d1	AH
0.6250	0.517	NPT 1/2"	A 3.15	2.063
Flange	AJ	AK	BD	BF
FC-149	5.874	4.500	6.500	UNC 3/8"x16-2B
BB				
0.157				