



# Dealers Industrial Equipment

No.:

Date: 12-SEP-2016

Customer :

## TECHNICAL PROPOSAL

### Single-phase induction motor - Squirrel cage rotor

Product line : Single-Phase : NEMA 48 & 56 ODP - Start Capacitor

Catalog Number : .7518OS1BD56

List Price : \$328

#### Notes:

Downloaded from <http://dealerselectric.com>

Generated for Model #.7518OS1BD56

Performed by:

Checked:



Dealers Industrial Equipment

No.:

Date: 12-SEP-2016

## DATA SHEET

### Single-phase induction motor - Squirrel cage rotor

Customer :  
Product line : Single-Phase : NEMA 48 & 56 ODP - Start Capacitor

Frame : D56  
Output : 0.75 HP  
Frequency : 60 Hz  
Poles : 4  
Full load speed : 1745 rpm  
Slip : 3.06 %  
Voltage : 115/208-230 V  
Rated current : 11.6/5.78 A  
Locked rotor current : 70.5/35.3 A  
Locked rotor current (I<sub>L</sub>/I<sub>n</sub>) : 6.1  
No-load current : 8.91/4.46 A  
Full load torque : 2.23 lb.ft  
Locked rotor torque : 330 %  
Breakdown torque : 280 %  
Design : ---  
Insulation class : B  
Temperature rise : 80 K  
Locked rotor time : 6 s (hot)  
Service factor : 1.25 (1.00 at 208V)  
Duty cycle : S1  
Ambient temperature : -20°C - +40°C  
Altitude : 1000 m  
Degree of Protection : IP21  
Approximate weight : 30 lb  
Moment of inertia : 0.10702 sq.ft.lb  
Noise level : ---

	D.E.	N.D.E.	Load	Power factor	Efficiency (%)
Bearings	6204 ZZ	6203 ZZ	100%	0.62	67.0
Regreasing interval	---	---	75%	0.53	66.0
Grease amount	---	---	50%	0.42	59.0

Notes:

Downloaded from <http://dealerselectric.com>  
Generated for Model #.7518OS1BD56

Performed by

Checked



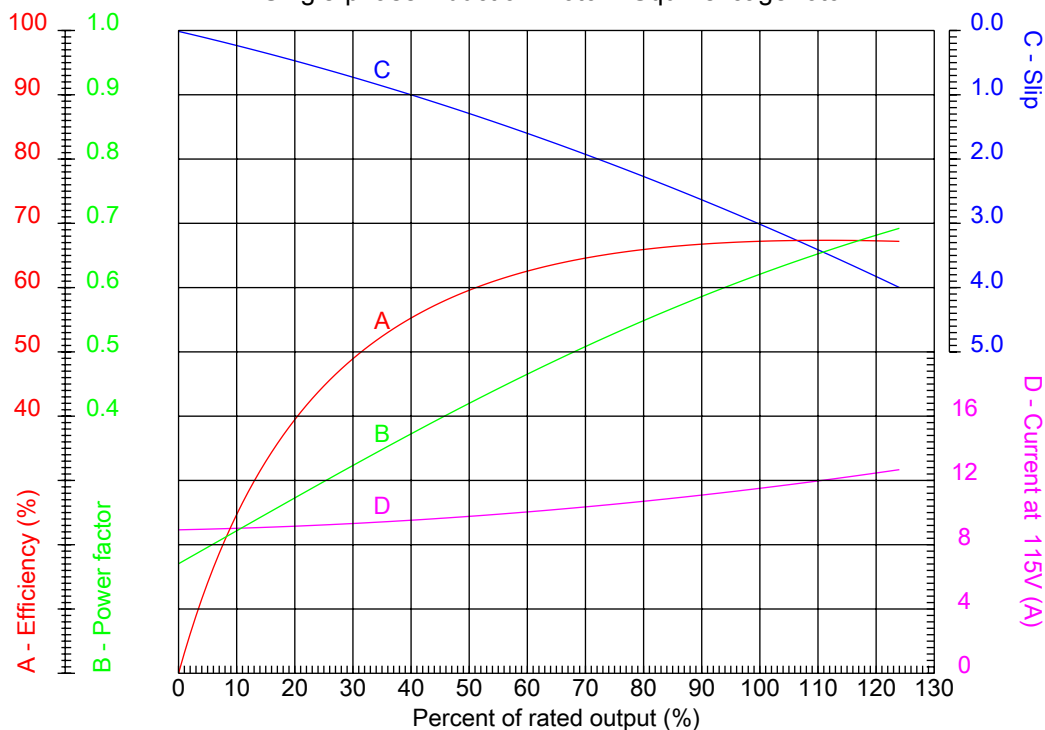
# Dealers Industrial Equipment

No.:

Date: 12-SEP-2016

## PERFORMANCE CURVES RELATED TO RATED OUTPUT

Single-phase induction motor - Squirrel cage rotor



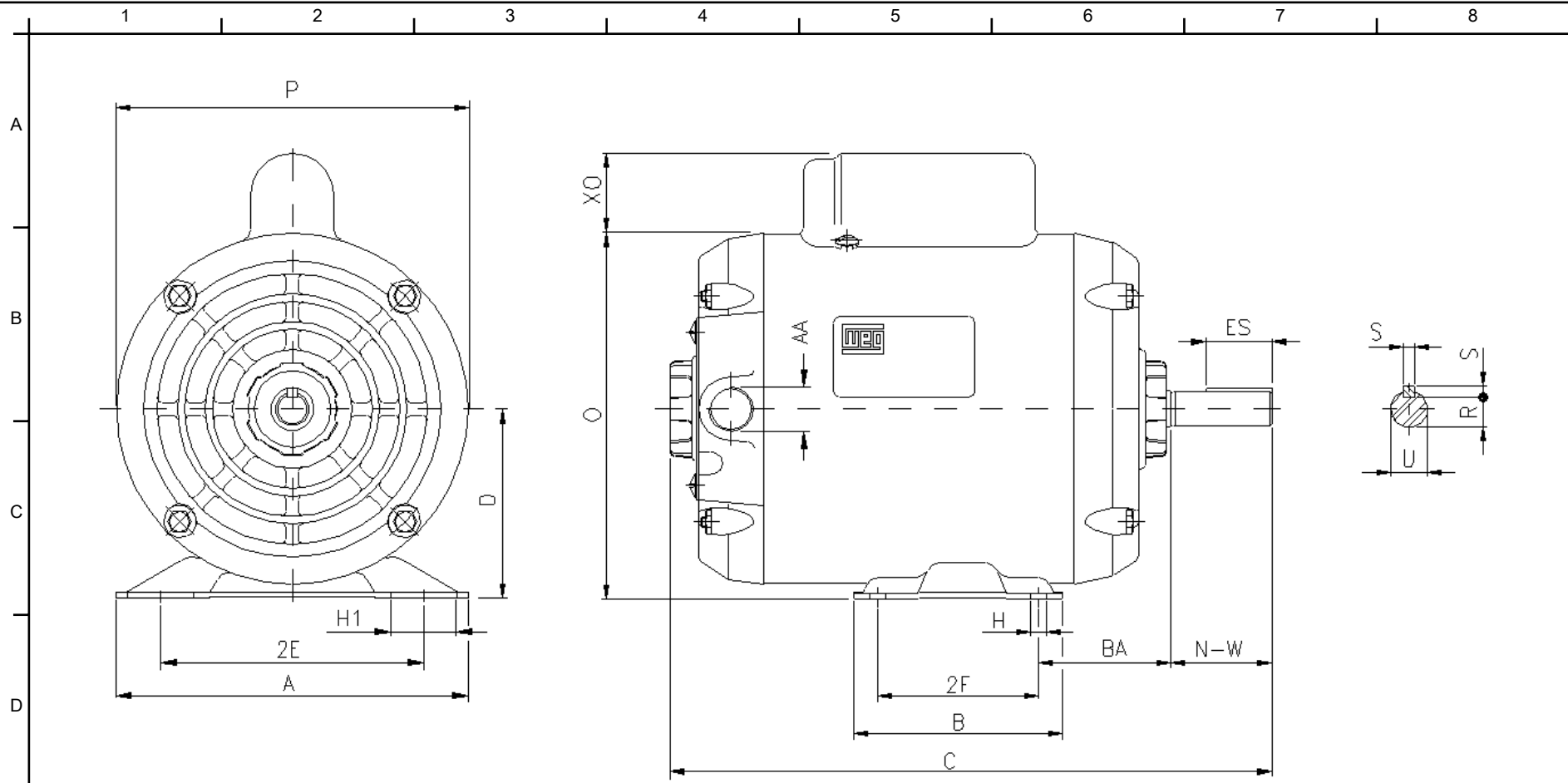
Customer :  
Product line : Single-Phase : NEMA 48 & 56 ODP - Start Capacitor

Frame : D56	Locked rotor current (I <sub>L</sub> /I <sub>n</sub> ) : 6.1
Output : 0.75 HP	Duty cycle : S1
Frequency : 60 Hz	Service factor : 1.25 (1.00 at 208V)
Full load speed : 1745 rpm	Design : ---
Voltage : 115/208-230 V	Locked rotor torque : 330 %
Rated current : 11.6/5.78 A	Breakdown torque : 280 %
Insulation class : B	

Notes:  
Downloaded from <http://dealerselectric.com>  
Generated for Model #.7518OS1BD56

Performed by

Checked



Notes: Downloaded from <http://dealerselectric.com>  
 Generated for Model #.7518OS1BD56

Performed by:

Checked:

Customer:

Single-Phase : NEMA 48 & 56 ODP - Start Capacitor

2E 4.874	2F 3.000	H 0.342	H1 1.220	BA 2.750
A 6.535	B 4.016	C 12.283	D 3.500	O 6.732
XO 0.000	P 6.457	ES 1.102	S 0.187	N-W 1.874
U 0.6250	R 0.517	AA NPT 1/2"	d1 A 3.15	AH 2.063

Single-phase induction motor  
 Frame D56 - IP21

12-SEP-2016

