



Dealers Industrial Equipment

No.:

Date: 12-SEP-2016

Customer :

TECHNICAL PROPOSAL

Three-phase induction motor - Squirrel cage rotor

Product line : Three Phase: W01 (Rolled Steel) - ODP - Standard Efficiency

Catalog Number : .7512OS3E56-S

List Price : \$332

Notes:

Downloaded from <http://dealerselectric.com>

Generated for Model #.7512OS3E56-S

Performed by:

Checked:



Dealers Industrial Equipment

No.:

Date: 12-SEP-2016

DATA SHEET Three-phase induction motor - Squirrel cage rotor

Customer :
 Product line : Three Phase: W01 (Rolled Steel) - ODP - Standard Efficiency

Frame : 56H
 Output : 0.75 HP
 Frequency : 60 Hz
 Poles : 6
 Full load speed : 1150 rpm
 Slip : 4.17 %
 Voltage : 208-230/460 V
 Rated current : 2.85-2.58/1.29 A
 Locked rotor current : 13.9/6.97 A
 Locked rotor current (I_L/I_n) : 5.4
 No-load current : 1.85/0.925 A
 Full load torque : 3.38 lb.ft
 Locked rotor torque : 200 %
 Breakdown torque : 270 %
 Design : A
 Insulation class : F
 Temperature rise : 80 K
 Locked rotor time : 20 s (hot)
 Service factor : 1.15
 Duty cycle : S1
 Ambient temperature : -20°C - +40°C
 Altitude : 1000 m
 Degree of Protection : ODP
 Approximate weight : 26 lb
 Moment of inertia : 0.11533 sq.ft.lb
 Noise level : 50 dB(A)

	D.E.	N.D.E.
Bearings	6204 ZZ	6202 ZZ
Regreasing interval	---	---
Grease amount	---	---

Load	Power factor	Efficiency (%)
100%	0.71	75.5
75%	0.61	74.0
50%	0.48	70.0

Notes:
 Downloaded from <http://dealerselectric.com>
 Generated for Model #.7512OS3E56-S

Performed by

Checked



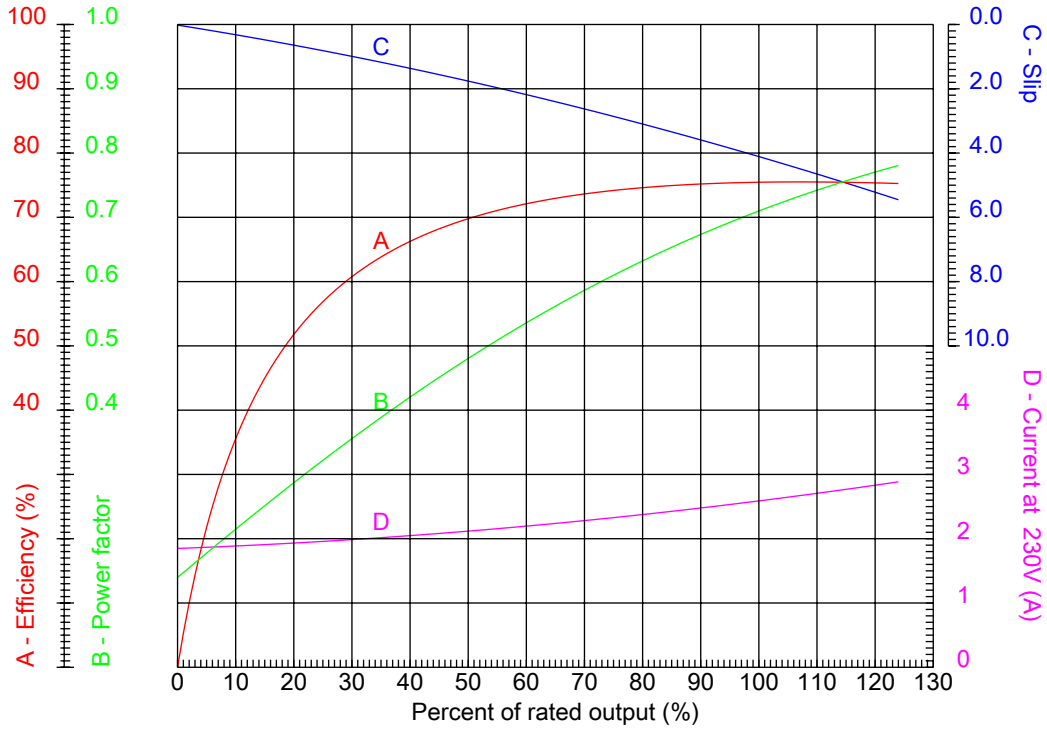
Dealers Industrial Equipment

No.:

Date: 12-SEP-2016

PERFORMANCE CURVES RELATED TO RATED OUTPUT

Three-phase induction motor - Squirrel cage rotor



Customer :
 Product line : Three Phase: W01 (Rolled Steel) - ODP - Standard Efficiency

Frame : 56H	Locked rotor current (I _L /I _n) : 5.4
Output : 0.75 HP	Duty cycle : S1
Frequency : 60 Hz	Service factor : 1.15
Full load speed : 1150 rpm	Design : A
Voltage : 208-230/460 V	Locked rotor torque : 200 %
Rated current : 2.85-2.58/1.29 A	Breakdown torque : 270 %
Insulation class : F	

Notes:
 Downloaded from <http://dealerselectric.com>
 Generated for Model #.7512OS3E56-S

Performed by

Checked



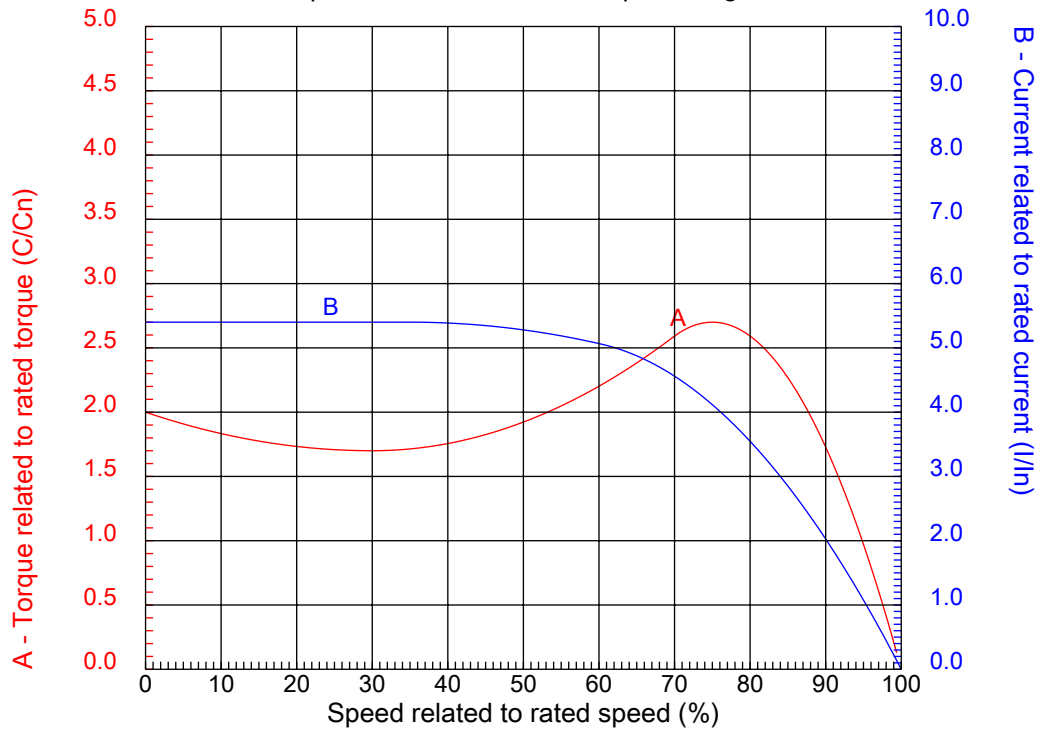
Dealers Industrial Equipment

No.:

Date: 12-SEP-2016

CHARACTERISTIC CURVES RELATED TO SPEED

Three-phase induction motor - Squirrel cage rotor



Customer :
Product line : Three Phase: W01 (Rolled Steel) - ODP - Standard Efficiency

Frame	: 56H	Locked rotor current (I _l /I _n)	: 5.4
Output	: 0.75 HP	Duty cycle	: S1
Frequency	: 60 Hz	Service factor	: 1.15
Full load speed	: 1150 rpm	Design	: A
Voltage	: 208-230/460 V	Locked rotor torque	: 200 %
Rated current	: 2.85-2.58/1.29 A	Breakdown torque	: 270 %
Insulation class	: F		

Notes:
Downloaded from <http://dealerselectric.com>
Generated for Model #.7512OS3E56-S

Performed by

Checked

1 2 3 4 5 6 7 8

A

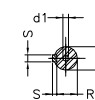
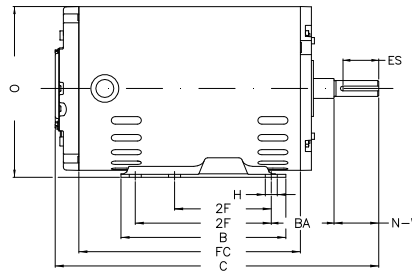
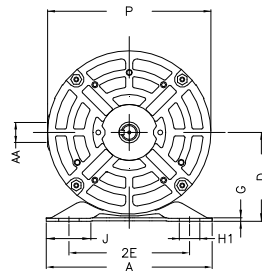
B

C

D

E

F



Notes: Downloaded from <http://dealerselectric.com>
Generated for Model #.7512OS3E56-S

Performed by:

Checked:

Customer:

Three Phase: W01 (Rolled Steel) - ODP - Standard Efficiency

Three-phase induction motor
Frame 56H - ODP

12-SEP-2016



P	AB	J	2E	A
6.456	5.882	1.732	4.874	6.535
H	G	HB	HK	T
0.343	0.120	1.783	2.638	0.004
O	FC	2F	B	C
6.724	7.480	3.000/5.000	6.496	11.496
BA	N-W	ES	d1	S
2.750	1.874	1.417	A 3,15	0.187
U	AA	depth	R	LL
0.625	NPT 1/2"	0.187	0.517	4.543
LM	BB	D		
4.106	0.004	3.500		