



# Dealers Industrial Equipment

No.:

Date: 12-SEP-2016

Customer :

## TECHNICAL PROPOSAL

### Three-phase induction motor - Squirrel cage rotor

Product line : Three Phase: W01 (Rolled Steel) - ODP - Standard Efficiency

Catalog Number : .5036OS3E56CFL-S

List Price : \$242

#### Notes:

Downloaded from <http://dealerselectric.com>

Generated for Model #.5036OS3E56CFL-S

Performed by:

Checked:



# Dealers Industrial Equipment

No.:

Date: 12-SEP-2016

## DATA SHEET Three-phase induction motor - Squirrel cage rotor

Customer :  
 Product line : Three Phase: W01 (Rolled Steel) - ODP - Standard Efficiency

Frame : 56  
 Output : 0.5 HP  
 Frequency : 60 Hz  
 Poles : 2  
 Full load speed : 3495 rpm  
 Slip : 2.92 %  
 Voltage : 208-230/460 V  
 Rated current : 2.10-1.90/0.949 A  
 Locked rotor current : 11.4/5.69 A  
 Locked rotor current (I<sub>L</sub>/I<sub>n</sub>) : 6.0  
 No-load current : 1.32/0.660 A  
 Full load torque : 0.741 lb.ft  
 Locked rotor torque : 240 %  
 Breakdown torque : 280 %  
 Design : A  
 Insulation class : F  
 Temperature rise : 80 K  
 Locked rotor time : 34 s (hot)  
 Service factor : 1.25  
 Duty cycle : S1  
 Ambient temperature : -20°C - +40°C  
 Altitude : 1000 m  
 Degree of Protection : ODP  
 Approximate weight : 16 lb  
 Moment of inertia : 0.03892 sq.ft.lb  
 Noise level : 62 dB(A)

	D.E.	N.D.E.
Bearings	6203 ZZ	6202 ZZ
Regreasing interval	---	---
Grease amount	---	---

Load	Power factor	Efficiency (%)
100%	0.72	68.0
75%	0.62	64.0
50%	0.49	57.5

Notes:  
 Downloaded from <http://dealerselectric.com>  
 Generated for Model #.5036OS3E56CFL-S

Performed by

Checked



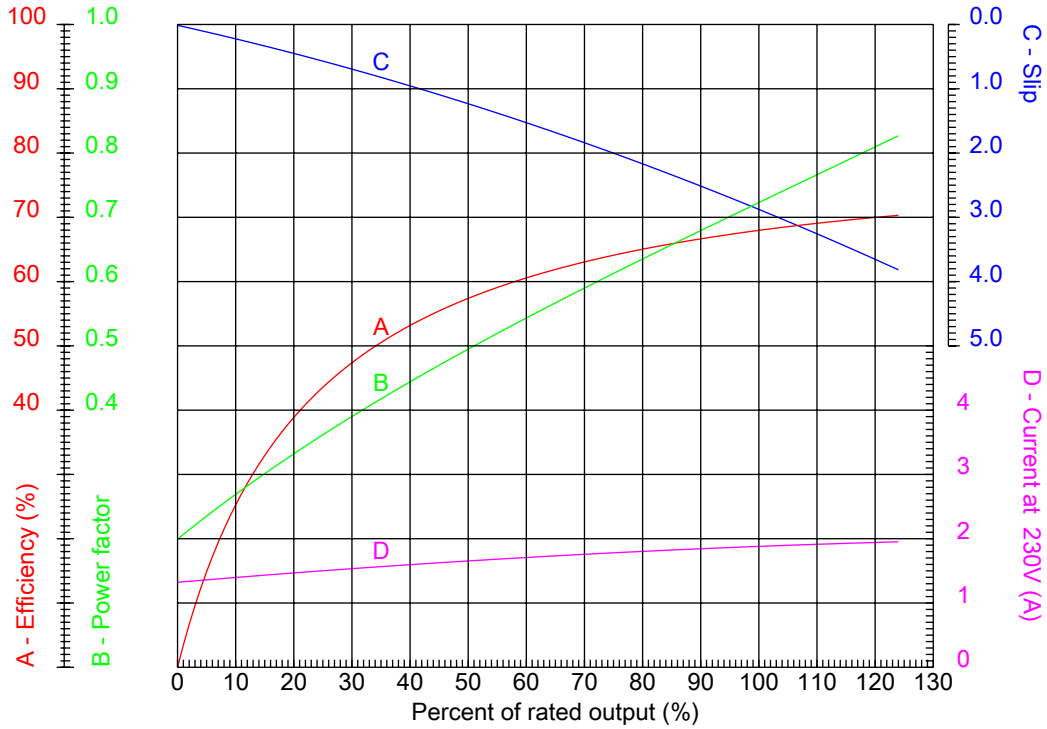
# Dealers Industrial Equipment

No.:

Date: 12-SEP-2016

## PERFORMANCE CURVES RELATED TO RATED OUTPUT

Three-phase induction motor - Squirrel cage rotor



Customer :  
 Product line : Three Phase: W01 (Rolled Steel) - ODP - Standard Efficiency

Frame	: 56	Locked rotor current (I <sub>L</sub> /I <sub>n</sub> )	: 6.0
Output	: 0.5 HP	Duty cycle	: S1
Frequency	: 60 Hz	Service factor	: 1.25
Full load speed	: 3495 rpm	Design	: A
Voltage	: 208-230/460 V	Locked rotor torque	: 240 %
Rated current	: 2.10-1.90/0.949 A	Breakdown torque	: 280 %
Insulation class	: F		

Notes:  
 Downloaded from <http://dealerselectric.com>  
 Generated for Model #.5036OS3E56CFL-S

Performed by

Checked



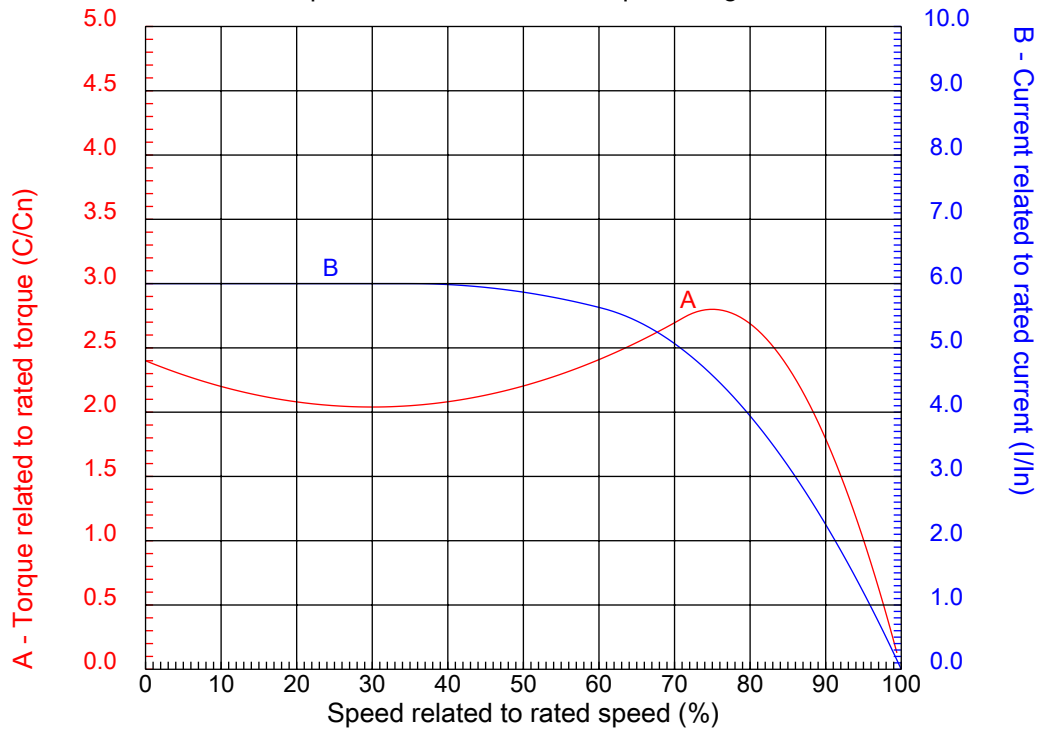
# Dealers Industrial Equipment

No.:

Date: 12-SEP-2016

## CHARACTERISTIC CURVES RELATED TO SPEED

Three-phase induction motor - Squirrel cage rotor



Customer :  
Product line : Three Phase: W01 (Rolled Steel) - ODP - Standard Efficiency

Frame	: 56	Locked rotor current (I <sub>l</sub> /I <sub>n</sub> )	: 6.0
Output	: 0.5 HP	Duty cycle	: S1
Frequency	: 60 Hz	Service factor	: 1.25
Full load speed	: 3495 rpm	Design	: A
Voltage	: 208-230/460 V	Locked rotor torque	: 240 %
Rated current	: 2.10-1.90/0.949 A	Breakdown torque	: 280 %
Insulation class	: F		

Notes:  
Downloaded from <http://dealerselectric.com>  
Generated for Model #.5036OS3E56CFL-S

Performed by

Checked

1 2 3 4 5 6 7 8

A

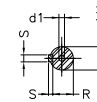
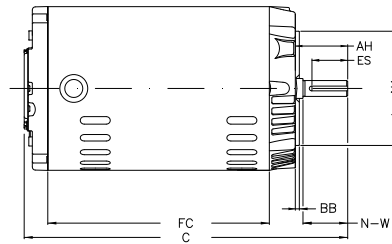
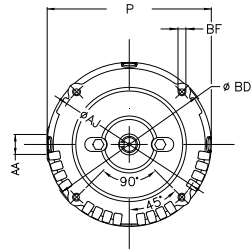
B

C

D

E

F



Notes: Downloaded from <http://dealerselectric.com>  
Generated for Model #.5036OS3E56CFL-S

Performed by:

Checked:

Customer:

Three Phase: W01 (Rolled Steel) - ODP - Standard Efficiency

Three-phase induction motor  
Frame 56 - ODP

12-SEP-2016



P 6.456	AB 3.323	HK 2.629	FC 6.299	C 10.315
N-W 1.874	ES 1.417	d1 A 3.15	S 0.187	U 0.625
AA NPT 1/2"	depth 0.187	R 0.517	LL 4.563	LM 4.090
Flange FC-149	AJ 5.874	AK 4.500	BD 6.450	BF UNC 3/8"x16-2B
BB 0.157	AH 2.062			