



Dealers Industrial Equipment

No.:

Date: 12-SEP-2016

Customer :

TECHNICAL PROPOSAL

Single-phase induction motor - Squirrel cage rotor

Product line : Single-Phase : NEMA 48 & 56 ODP - Start Capacitor

Catalog Number : .5036OS1BC56CFL

List Price : \$266

Notes:

Downloaded from <http://dealerselectric.com>

Generated for Model #.5036OS1BC56CFL

Performed by:

Checked:



Dealers Industrial Equipment

No.:

Date: 12-SEP-2016

DATA SHEET Single-phase induction motor - Squirrel cage rotor

Customer :
 Product line : Single-Phase : NEMA 48 & 56 ODP - Start Capacitor

Frame : C56
 Output : 0.5 HP
 Frequency : 60 Hz
 Poles : 2
 Full load speed : 3470 rpm
 Slip : 3.61 %
 Voltage : 115/208-230 V
 Rated current : 7.20/3.40-3.60 A
 Locked rotor current : 43.2/21.6 A
 Locked rotor current (I_L/I_n) : 6.0
 No-load current : 5.20/2.60 A
 Full load torque : 0.747 lb.ft
 Locked rotor torque : 380 %
 Breakdown torque : 300 %
 Design : ---
 Insulation class : B
 Temperature rise : 80 K
 Locked rotor time : 6 s (hot)
 Service factor : 1.25 (1.00 at 208V)
 Duty cycle : S1
 Ambient temperature : -20°C - +40°C
 Altitude : 1000 m
 Degree of Protection : IP21
 Approximate weight : 23 lb
 Moment of inertia : 0.02326 sq.ft.lb
 Noise level : ---

	D.E.	N.D.E.
Bearings	6203 ZZ	6202 ZZ
Regreasing interval	---	---
Grease amount	---	---

Load	Power factor	Efficiency (%)
100%	0.69	64.4
75%	0.61	60.7
50%	0.52	53.5

Notes:
 Downloaded from <http://dealerselectric.com>
 Generated for Model #.5036OS1BC56CFL

Performed by

Checked

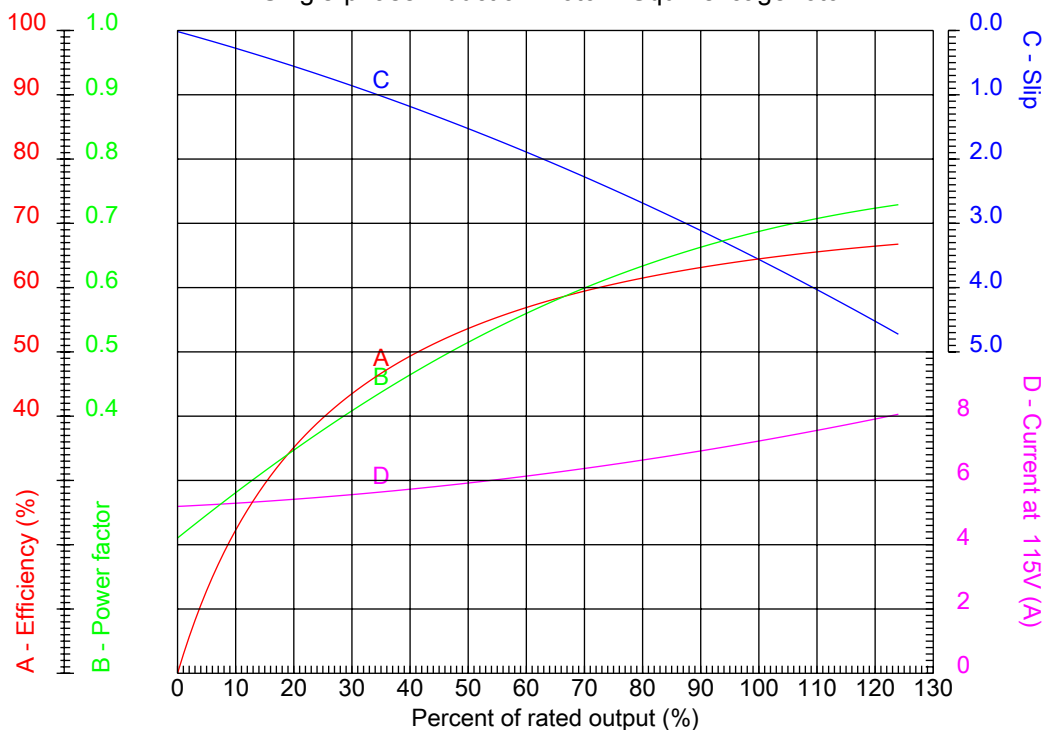


Dealers Industrial Equipment

No.:

Date: 12-SEP-2016

PERFORMANCE CURVES RELATED TO RATED OUTPUT Single-phase induction motor - Squirrel cage rotor



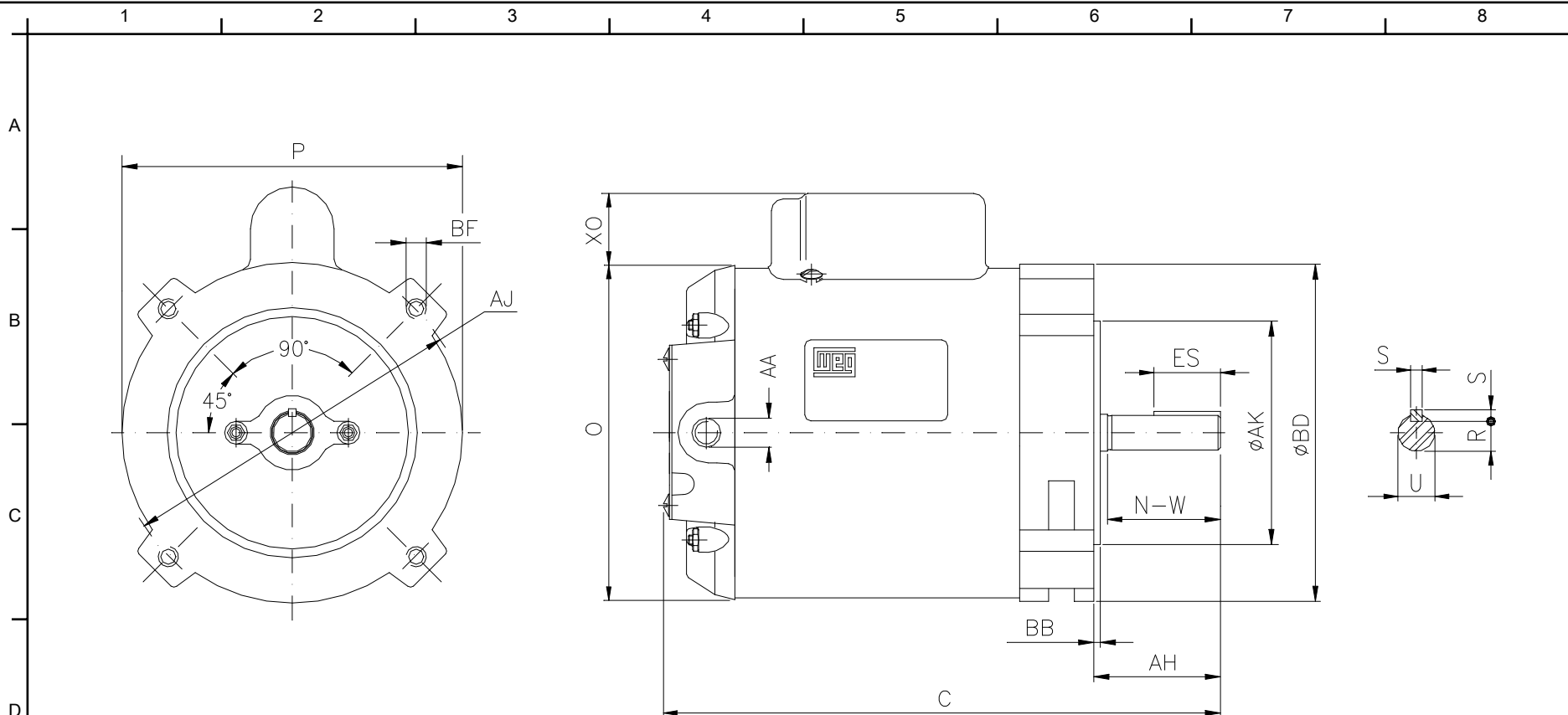
Customer :
 Product line : Single-Phase : NEMA 48 & 56 ODP - Start Capacitor

Frame	: C56	Locked rotor current (I _l /I _n)	: 6.0
Output	: 0.5 HP	Duty cycle	: S1
Frequency	: 60 Hz	Service factor	: 1.25 (1.00 at 208V)
Full load speed	: 3470 rpm	Design	: ---
Voltage	: 115/208-230 V	Locked rotor torque	: 380 %
Rated current	: 7.20/3.40-3.60 A	Breakdown torque	: 300 %
Insulation class	: B		

Notes:
 Downloaded from <http://dealerselectric.com>
 Generated for Model #.5036OS1BC56CFL

Performed by

Checked



Notes: Downloaded from <http://dealerselectric.com>
 Generated for Model #.5036OS1BC56CFL

Performed by:

Checked:

Customer:

Single-Phase : NEMA 48 & 56 ODP - Start Capacitor

C	P	ES	S	N-W
10.551	5.709	1.102	0.187	1.874
U	R	AA	AH	Flange
0.6250	0.517	NPT 1/2"	2.063	FC-149
AJ	AK	BD	BF	BB
5.874	4.500	5.748	UNC 3/8"x16-2B	0.157

Single-phase induction motor
 Frame C56 - IP21

12-SEP-2016

