



Dealers Industrial Equipment

No.:

Date: 12-SEP-2016

Customer :

TECHNICAL PROPOSAL

Single-phase induction motor - Squirrel cage rotor

Product line : Single Phase: W01 (Rolled Steel) - ODP - Premium Efficiency (DOE)

Catalog Number : .5018OT1BW56CFL-S

List Price : \$335

Notes:

Downloaded from <http://dealerselectric.com>

Generated for Model #.5018OT1BW56CFL-S

Performed by:

Checked:



Dealers Industrial Equipment

No.:

Date: 12-SEP-2016

## DATA SHEET Single-phase induction motor - Squirrel cage rotor

Customer :  
Product line : Single Phase: W01 (Rolled Steel) - ODP - Premium Efficiency (DOE)

Frame : W56  
Output : 0.5 HP  
Frequency : 60 Hz  
Poles : 4  
Full load speed : 1745 rpm  
Slip : 3.06 %  
Voltage : 115/208-230 V  
Rated current : 5.50/3.04-2.75 A  
Locked rotor current : 42.3/21.2 A  
Locked rotor current (I<sub>L</sub>/I<sub>n</sub>) : 7.7  
No-load current : 3.60/1.80 A  
Full load torque : 1.48 lb.ft  
Locked rotor torque : 310 %  
Breakdown torque : 300 %  
Design : ---  
Insulation class : F  
Temperature rise : 80 K  
Locked rotor time : 15 s (hot)  
Service factor : 1.25 (1.00 at 208V)  
Duty cycle : S1  
Ambient temperature : -20°C - +40°C  
Altitude : 1000 m  
Degree of Protection : ODP  
Approximate weight : 20 lb  
Moment of inertia : 0.05197 sq.ft.lb  
Noise level : 50 dB(A)

	D.E.	N.D.E.	Load	Power factor	Efficiency (%)
Bearings	6203 ZZ	6202 ZZ	100%	0.77	76.2
Regreasing interval	---	---	75%	0.70	71.0
Grease amount	---	---	50%	0.60	63.0

Notes:

Downloaded from <http://dealerselectric.com>  
Generated for Model #.5018OT1BW56CFL-S

Performed by

Checked



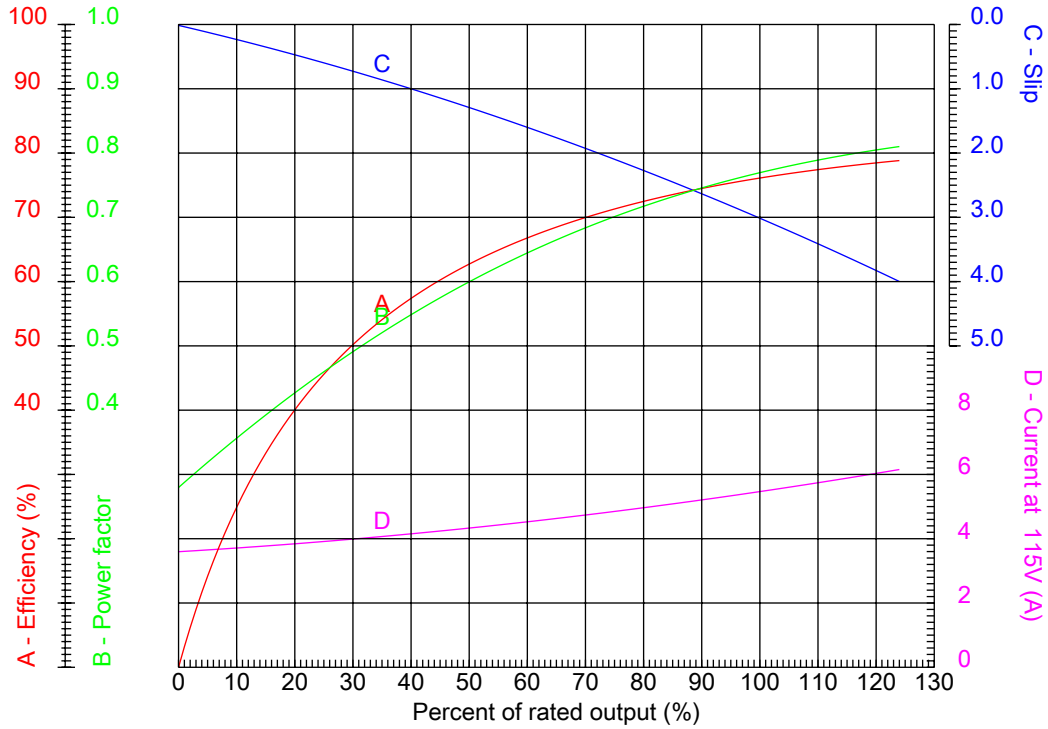
# Dealers Industrial Equipment

No.:

Date: 12-SEP-2016

## PERFORMANCE CURVES RELATED TO RATED OUTPUT

Single-phase induction motor - Squirrel cage rotor



Customer :  
 Product line : Single Phase: W01 (Rolled Steel) - ODP - Premium Efficiency (DOE)

Frame	: W56	Locked rotor current (I <sub>l</sub> /I <sub>n</sub> )	: 7.7
Output	: 0.5 HP	Duty cycle	: S1
Frequency	: 60 Hz	Service factor	: 1.25 (1.00 at 208V)
Full load speed	: 1745 rpm	Design	: ---
Voltage	: 115/208-230 V	Locked rotor torque	: 310 %
Rated current	: 5.50/3.04-2.75 A	Breakdown torque	: 300 %
Insulation class	: F		

Notes:  
 Downloaded from <http://dealerselectric.com>  
 Generated for Model #.5018OT1BW56CFL-S

Performed by

Checked

1 2 3 4 5 6 7 8

A

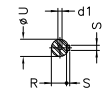
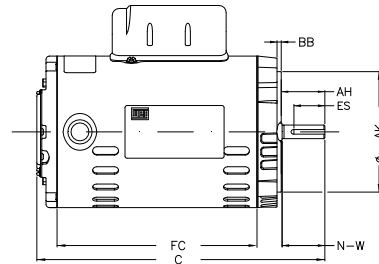
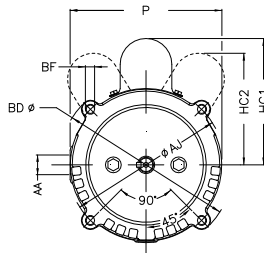
B

C

D

E

F



Notes: Downloaded from <http://dealerselectric.com>  
Generated for Model #.5018OT1BW56CFL-S

Performed by:

Checked:

Customer:

Single Phase: W01 (Rolled Steel) - ODP - Premium Efficiency (DOE)

Single-phase induction motor  
Frame W56 - ODP

12-SEP-2016



P 5.709	AB 5.520	HK 2.650	FC 7.087	C 10.654
N-W 1.874	ES 1.417	d1 A 3.15	S 0.187	U 0.625
AA NPT 1/2"	depth 0.187	R 0.517	LL 3.835	LM 3.697
HC2 4.165	Flange FC-149	AJ 5.874	AK 4.500	BD 6.470
BF UNC 3/8"x16-2B	BB 0.157	AH 2.063		