



Dealers Industrial Equipment

No.:

Date: 12-SEP-2016

Customer :

TECHNICAL PROPOSAL

Single-phase induction motor - Squirrel cage rotor

Product line : Single-Phase : NEMA 48 & 56 ODP - Resilient Base - Split Phase

Catalog Number : .5018OS1BRBOC56

List Price : \$316

Notes:

Downloaded from <http://dealerselectric.com>

Generated for Model #.5018OS1BRBOC56

Performed by:

Checked:



Dealers Industrial Equipment

No.:

Date: 12-SEP-2016

DATA SHEET

Single-phase induction motor - Squirrel cage rotor

Customer :
Product line : Single-Phase : NEMA 48 & 56 ODP - Resilient Base - Split Phase

Frame : C56
Output : 0.5 HP
Frequency : 60 Hz
Poles : 4
Full load speed : 1730 rpm
Slip : 3.89 %
Voltage : 115/208-230 V
Rated current : 8.00/4.00-4.00 A
Locked rotor current : 48.0/24.0 A
Locked rotor current (I_L/I_n) : 6.0
No-load current : 6.00/3.00 A
Full load torque : 1.50 lb.ft
Locked rotor torque : 130 %
Breakdown torque : 220 %
Design : ---
Insulation class : B
Temperature rise : 80 K
Locked rotor time : 6 s (hot)
Service factor : 1.25 (1.00 at 208V)
Duty cycle : S1
Ambient temperature : -20°C - +40°C
Altitude : 1000 m
Degree of Protection : IP21
Approximate weight : 26 lb
Moment of inertia : 0.04817 sq.ft.lb
Noise level : ---

	D.E.	N.D.E.	Load	Power factor	Efficiency (%)
Bearings	6203 ZZ	6202 ZZ	100%	0.63	63.5
Regreasing interval	---	---	75%	0.54	61.0
Grease amount	---	---	50%	0.44	54.5

Notes:

Downloaded from <http://dealerselectric.com>
Generated for Model #.5018OS1BRBOC56

Performed by

Checked

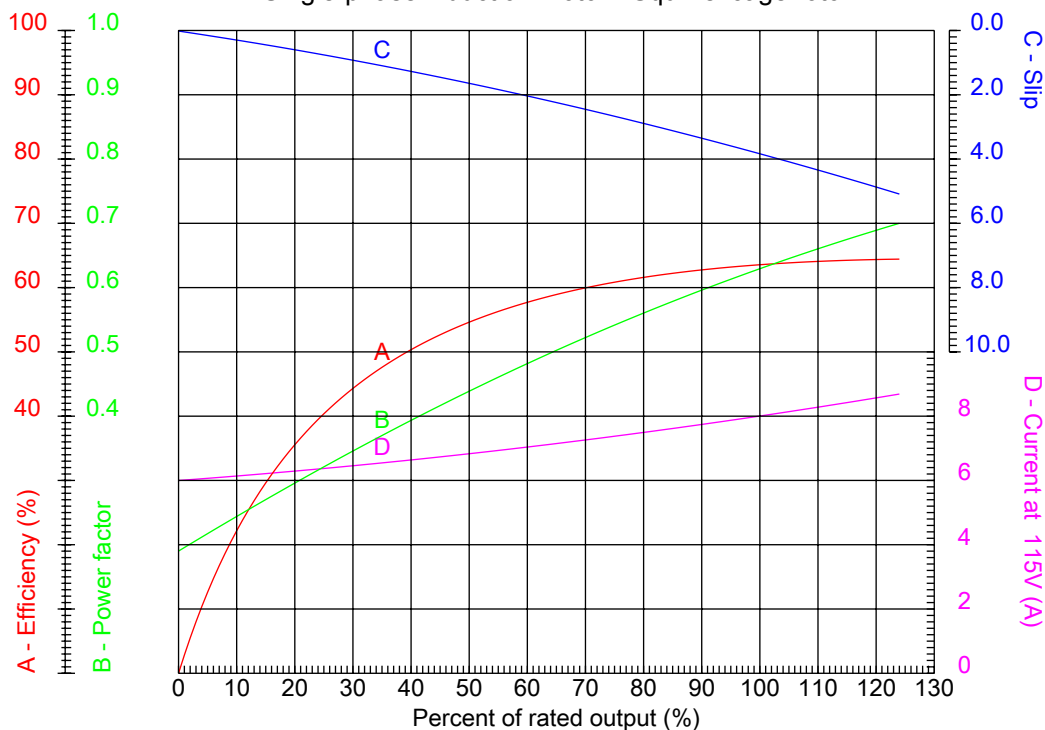


Dealers Industrial Equipment

No.:

Date: 12-SEP-2016

PERFORMANCE CURVES RELATED TO RATED OUTPUT Single-phase induction motor - Squirrel cage rotor



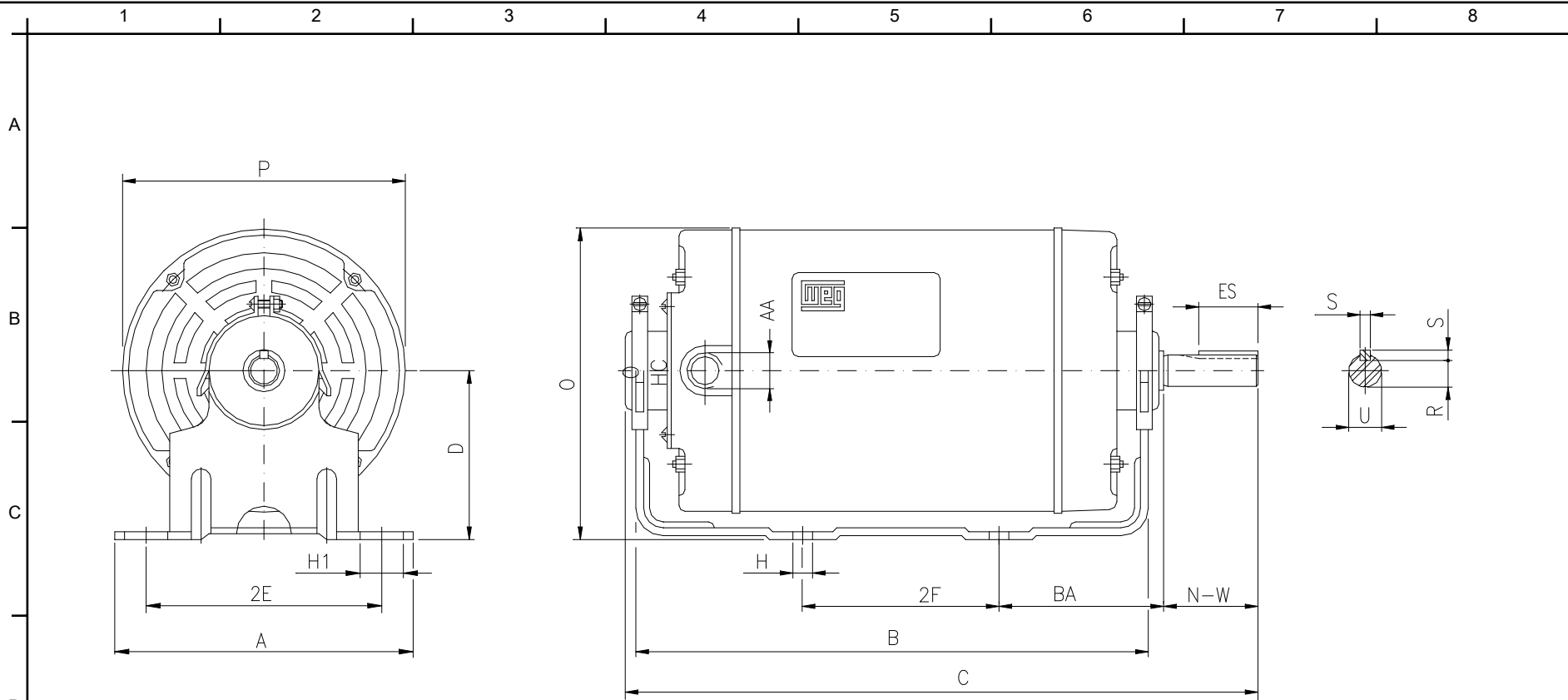
Customer :
 Product line : Single-Phase : NEMA 48 & 56 ODP - Resilient Base - Split Phase

Frame	: C56	Locked rotor current (I _l /I _n)	: 6.0
Output	: 0.5 HP	Duty cycle	: S1
Frequency	: 60 Hz	Service factor	: 1.25 (1.00 at 208V)
Full load speed	: 1730 rpm	Design	: ---
Voltage	: 115/208-230 V	Locked rotor torque	: 130 %
Rated current	: 8.00/4.00-4.00 A	Breakdown torque	: 220 %
Insulation class	: B		

Notes:
 Downloaded from <http://dealerselectric.com>
 Generated for Model #.5018OS1BRBOC56

Performed by

Checked



Notes: Downloaded from <http://dealerselectric.com>
 Generated for Model #.5018OS1BRBOC56

Performed by:

Checked:

Customer:

Single-Phase : NEMA 48 & 56 ODP - Resilient Base - Split Phase

2E	2F	H	BA	A
4.874	3.000	0.342	2.750	6.535
B	D	J	O	P
4.016	3.500	1.220	6.378	5.709
ES	S	N-W	U	R
1.102	0.187	1.874	0.625	0.517
AA				
NPT 1/2"				

Single-phase induction motor
 Frame C56 - IP21

12-SEP-2016

