



Dealers Industrial Equipment

No.:

Date: 12-SEP-2016

Customer :

TECHNICAL PROPOSAL

Three-phase induction motor - Squirrel cage rotor

Product line : Jet Pump: Three-Phase - W01 (Rolled Steel) - Threaded - ODP - Standard
Efficiency
Catalog Number : .3336OS3EJP56J-S
List Price : \$224

Notes:
Downloaded from <http://dealerselectric.com>
Generated for Model #.3336OS3EJP56J-S

Performed by:

Checked:



Dealers Industrial Equipment

No.:

Date: 12-SEP-2016

DATA SHEET

Three-phase induction motor - Squirrel cage rotor

Customer :
 Product line : Jet Pump: Three-Phase - W01 (Rolled Steel) - Threaded - ODP - Standard Efficiency

Frame : 56J
 Output : 0.33 HP
 Frequency : 60 Hz
 Poles : 2
 Full load speed : 3515 rpm
 Slip : 2.36 %
 Voltage : 208-230/460 V
 Rated current : 1.38-1.25/0.624 A
 Locked rotor current : 8.36/4.18 A
 Locked rotor current (I_L/I_n) : 6.7
 No-load current : 0.900/0.450 A
 Full load torque : 0.486 lb.ft
 Locked rotor torque : 240 %
 Breakdown torque : 320 %
 Design : A
 Insulation class : F
 Temperature rise : 80 K
 Locked rotor time : 38 s (hot)
 Service factor : 1.75
 Duty cycle : S1
 Ambient temperature : -20°C - +40°C
 Altitude : 1000 m
 Degree of Protection : ODP
 Approximate weight : 16 lb
 Moment of inertia : 0.03892 sq.ft.lb
 Noise level : 62 dB(A)

	D.E.	N.D.E.	Load	Power factor	Efficiency (%)
Bearings	6203 ZZ	6202 ZZ	100%	0.74	68.0
Regreasing interval	---	---	75%	0.65	66.0
Grease amount	---	---	50%	0.54	57.5

Notes:
 Downloaded from <http://dealerselectric.com>
 Generated for Model #.3336OS3EJP56J-S

Performed by

Checked



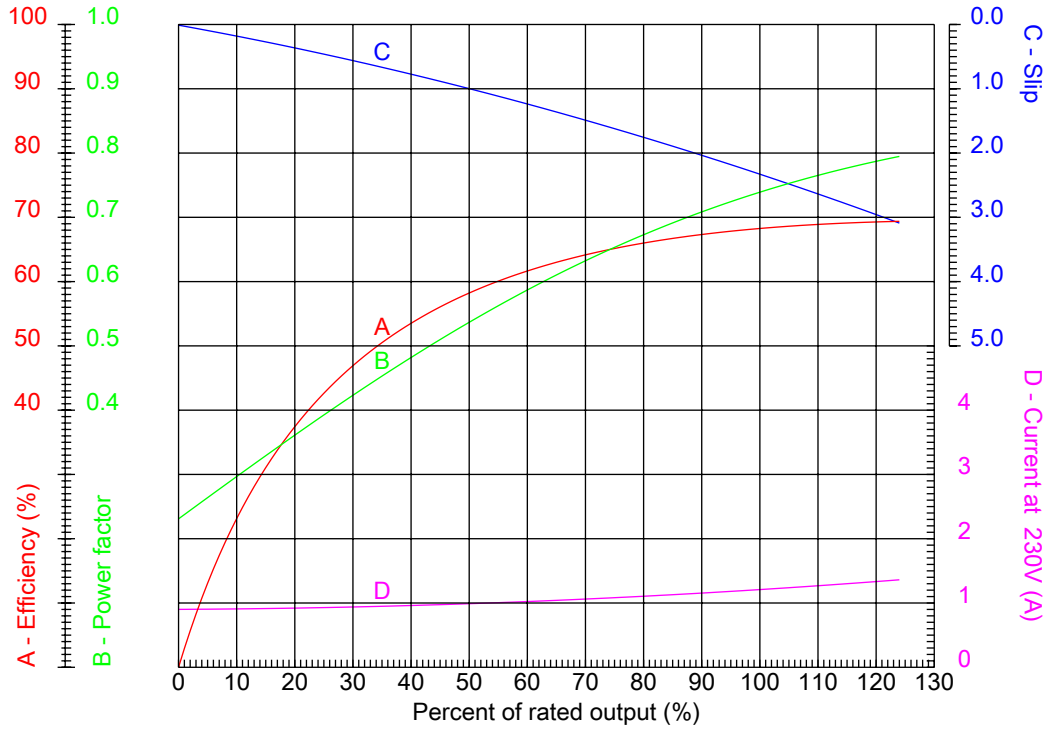
Dealers Industrial Equipment

No.:

Date: 12-SEP-2016

PERFORMANCE CURVES RELATED TO RATED OUTPUT

Three-phase induction motor - Squirrel cage rotor



Customer :
 Product line : Jet Pump: Three-Phase - W01 (Rolled Steel) - Threaded - ODP - Standard Efficiency

Frame	: 56J	Locked rotor current (I _l /I _n)	: 6.7
Output	: 0.33 HP	Duty cycle	: S1
Frequency	: 60 Hz	Service factor	: 1.75
Full load speed	: 3515 rpm	Design	: A
Voltage	: 208-230/460 V	Locked rotor torque	: 240 %
Rated current	: 1.38-1.25/0.624 A	Breakdown torque	: 320 %
Insulation class	: F		

Notes:
 Downloaded from <http://dealerselectric.com>
 Generated for Model #.3336OS3EJP56J-S

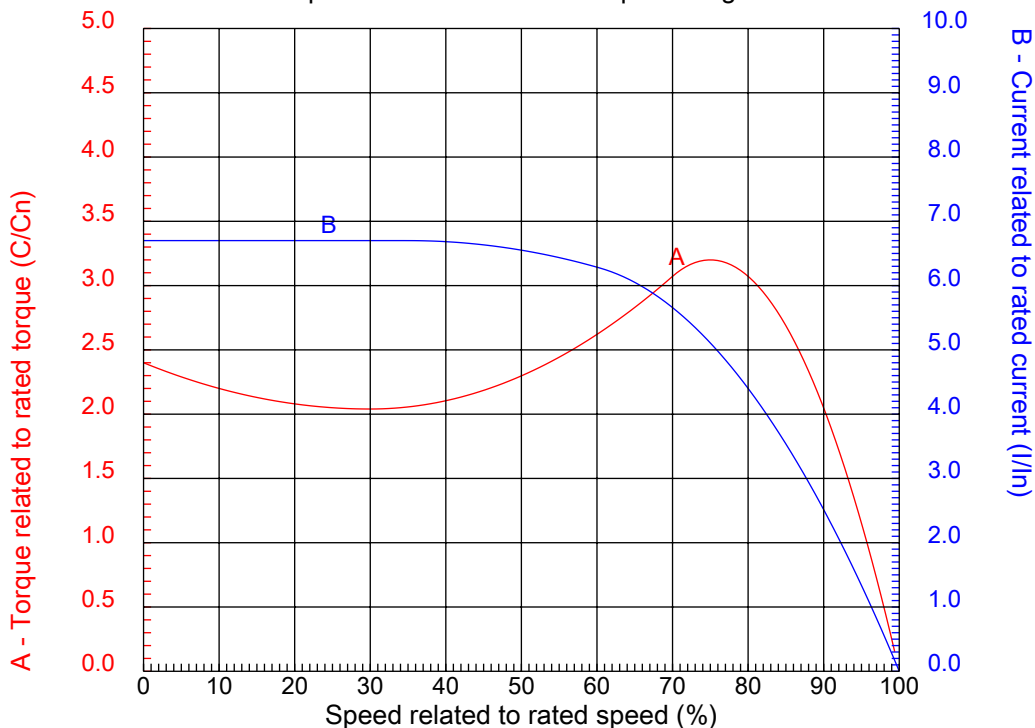
Performed by

Checked



CHARACTERISTIC CURVES RELATED TO SPEED

Three-phase induction motor - Squirrel cage rotor



Customer	:	
Product line	:	Jet Pump: Three-Phase - W01 (Rolled Steel) - Threaded - ODP - Standard Efficiency

Frame	:	56J	Locked rotor current (I _L /I _n)	:	6.7
Output	:	0.33 HP	Duty cycle	:	S1
Frequency	:	60 Hz	Service factor	:	1.75
Full load speed	:	3515 rpm	Design	:	A
Voltage	:	208-230/460 V	Locked rotor torque	:	240 %
Rated current	:	1.38-1.25/0.624 A	Breakdown torque	:	320 %
Insulation class	:	F			

Notes:
 Downloaded from <http://dealerselectric.com>
 Generated for Model #.3336OS3EJP56J-S

Performed by

Checked

1 2 3 4 5 6 7 8

A

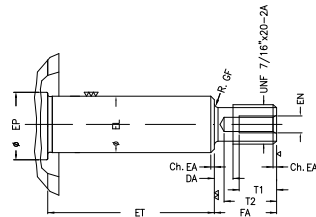
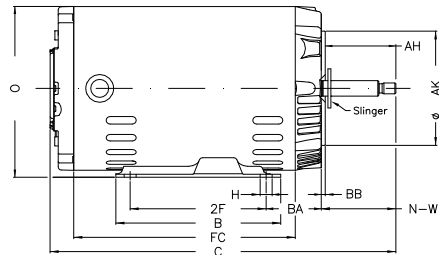
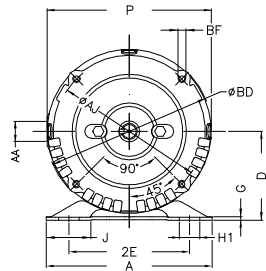
B

C

D

E

F



Notes: Downloaded from <http://dealerselectric.com>
Generated for Model #.3336OS3EJP56J-S

Performed by:

Checked:

Customer:

Jet Pump: Three-Phase - W01 (Rolled Steel) - Threaded - ODP - Standard

Three-phase induction motor
Frame 56J - ODP

12-SEP-2016



2E 4.874	J 1.732	A 6.535	P 6.456	AB 5.882
2F 3.000	B 4.016	BA 2.559	D 3.500	G 0.120
O 6.724	T 0.004	H 0.343	AA NPT 1/2"	ET 1.874
U 0.625	EL 0.625	EP 0.665	t1 0.472	t2 0.590
C 10.827	FC 6.299	Flange FC-149	AJ 5.874	AK 4.500
BD 6.450	BF UNC 3/8"x16-2B	BB 0.157	AH 2.562	