



Dealers Industrial Equipment

No.:

Date: 12-SEP-2016

Customer :

TECHNICAL PROPOSAL

Single-phase induction motor - Squirrel cage rotor

Product line : Single-Phase : NEMA 48 & 56 ODP - Start Capacitor

Catalog Number : .3336OS1BC56C

List Price : \$244

Notes:

Downloaded from <http://dealerselectric.com>

Generated for Model #.3336OS1BC56C

Performed by:

Checked:



Dealers Industrial Equipment

No.:

Date: 12-SEP-2016

DATA SHEET Single-phase induction motor - Squirrel cage rotor

Customer :
Product line : Single-Phase : NEMA 48 & 56 ODP - Start Capacitor

Frame : C56
Output : 0.33 HP
Frequency : 60 Hz
Poles : 2
Full load speed : 3480 rpm
Slip : 3.33 %
Voltage : 115/208-230 V
Rated current : 5.70/2.60-2.85 A
Locked rotor current : 33.6/16.8 A
Locked rotor current (I_L/I_n) : 5.9
No-load current : 4.20/2.10 A
Full load torque : 0.491 lb.ft
Locked rotor torque : 380 %
Breakdown torque : 300 %
Design : ---
Insulation class : B
Temperature rise : 80 K
Locked rotor time : 6 s (hot)
Service factor : 1.35 (1.00 at 208V)
Duty cycle : S1
Ambient temperature : -20°C - +40°C
Altitude : 1000 m
Degree of Protection : IP21
Approximate weight : 21 lb
Moment of inertia : 0.01898 sq.ft.lb
Noise level : ---

	D.E.	N.D.E.	Load	Power factor	Efficiency (%)
Bearings	6203 ZZ	6202 ZZ	100%	0.65	57.6
Regreasing interval	---	---	75%	0.59	54.1
Grease amount	---	---	50%	0.49	46.5

Notes:
Downloaded from <http://dealerselectric.com>
Generated for Model #.3336OS1BC56C

Performed by

Checked



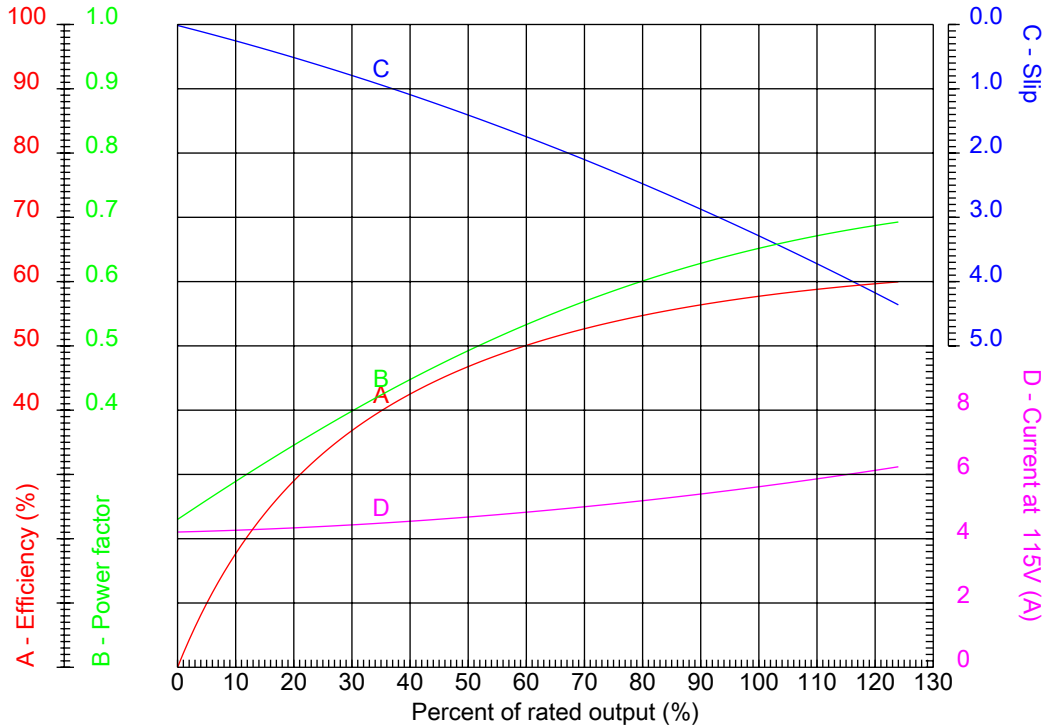
Dealers Industrial Equipment

No.:

Date: 12-SEP-2016

PERFORMANCE CURVES RELATED TO RATED OUTPUT

Single-phase induction motor - Squirrel cage rotor



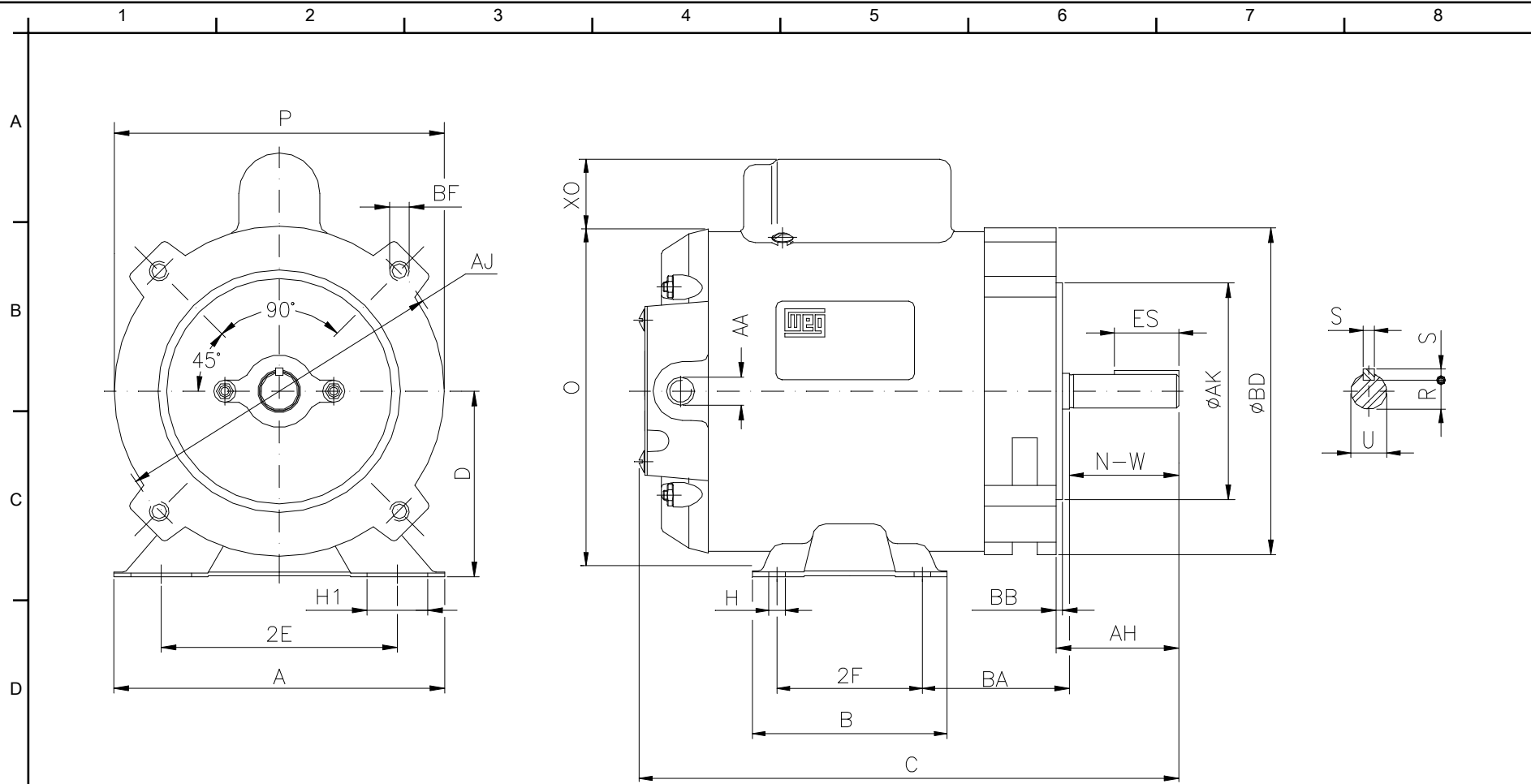
Customer :
 Product line : Single-Phase : NEMA 48 & 56 ODP - Start Capacitor

Frame	: C56	Locked rotor current (I _l /I _n)	: 5.9
Output	: 0.33 HP	Duty cycle	: S1
Frequency	: 60 Hz	Service factor	: 1.35 (1.00 at 208V)
Full load speed	: 3480 rpm	Design	: ---
Voltage	: 115/208-230 V	Locked rotor torque	: 380 %
Rated current	: 5.70/2.60-2.85 A	Breakdown torque	: 300 %
Insulation class	: B		

Notes:
 Downloaded from <http://dealerselectric.com>
 Generated for Model #.3336OS1BC56C

Performed by

Checked



Notes: Downloaded from <http://dealerselectric.com>
 Generated for Model #.3336OS1BC56C

Performed by:

Checked:

Customer:

Single-Phase : NEMA 48 & 56 ODP - Start Capacitor

Single-phase induction motor
 Frame C56 - IP21

12-SEP-2016



2E 4.874	2F 3.000	H 0.342	H1 31	BA 2.750
A 6.535	B 4.016	C 10.551	D 3.500	O 6.378
XO 0.000	P 5.709	ES 1.102	S 0.187	N-W 1.874
U 0.6250	R 0.517	AA NPT 1/2"	AH 2.063	Flange FC-149
AJ 5.874	AK 4.500	BD 5.748	BF UNC 3/8"x16-2B	BB 0.157