



Dealers Industrial Equipment

No.:

Date: 12-SEP-2016

Customer :

TECHNICAL PROPOSAL

Three-phase induction motor - Squirrel cage rotor

Product line : Three Phase: W01 (Rolled Steel) - ODP - Premium Efficiency (DOE)

Catalog Number : .3318OT3E56-S

List Price : \$256

Notes:

Downloaded from <http://dealerselectric.com>

Generated for Model #.3318OT3E56-S

Performed by:

Checked:



# Dealers Industrial Equipment

No.:

Date: 12-SEP-2016

## DATA SHEET Three-phase induction motor - Squirrel cage rotor

Customer :  
 Product line : Three Phase: W01 (Rolled Steel) - ODP - Premium Efficiency (DOE)

Frame : 56  
 Output : 0.33 HP  
 Frequency : 60 Hz  
 Poles : 4  
 Full load speed : 1765 rpm  
 Slip : 1.94 %  
 Voltage : 208-230/460 V  
 Rated current : 1.48-1.34/0.668 A  
 Locked rotor current : 8.28/4.14 A  
 Locked rotor current (I<sub>L</sub>/I<sub>n</sub>) : 6.2  
 No-load current : 1.10/0.550 A  
 Full load torque : 0.969 lb.ft  
 Locked rotor torque : 230 %  
 Breakdown torque : 330 %  
 Design : A  
 Insulation class : F  
 Temperature rise : 80 K  
 Locked rotor time : 36 s (hot)  
 Service factor : 1.35  
 Duty cycle : S1  
 Ambient temperature : -20°C - +40°C  
 Altitude : 1000 m  
 Degree of Protection : ODP  
 Approximate weight : 17 lb  
 Moment of inertia : 0.04532 sq.ft.lb  
 Noise level : 52 dB(A)

|                     | D.E.    | N.D.E.  |
|---------------------|---------|---------|
| Bearings            | 6203 ZZ | 6202 ZZ |
| Regreasing interval | ---     | ---     |
| Grease amount       | ---     | ---     |

| Load | Power factor | Efficiency (%) |
|------|--------------|----------------|
| 100% | 0.64         | 73.4           |
| 75%  | 0.55         | 70.0           |
| 50%  | 0.44         | 62.0           |

Notes:  
 Downloaded from <http://dealerselectric.com>  
 Generated for Model #.3318OT3E56-S

Performed by

Checked

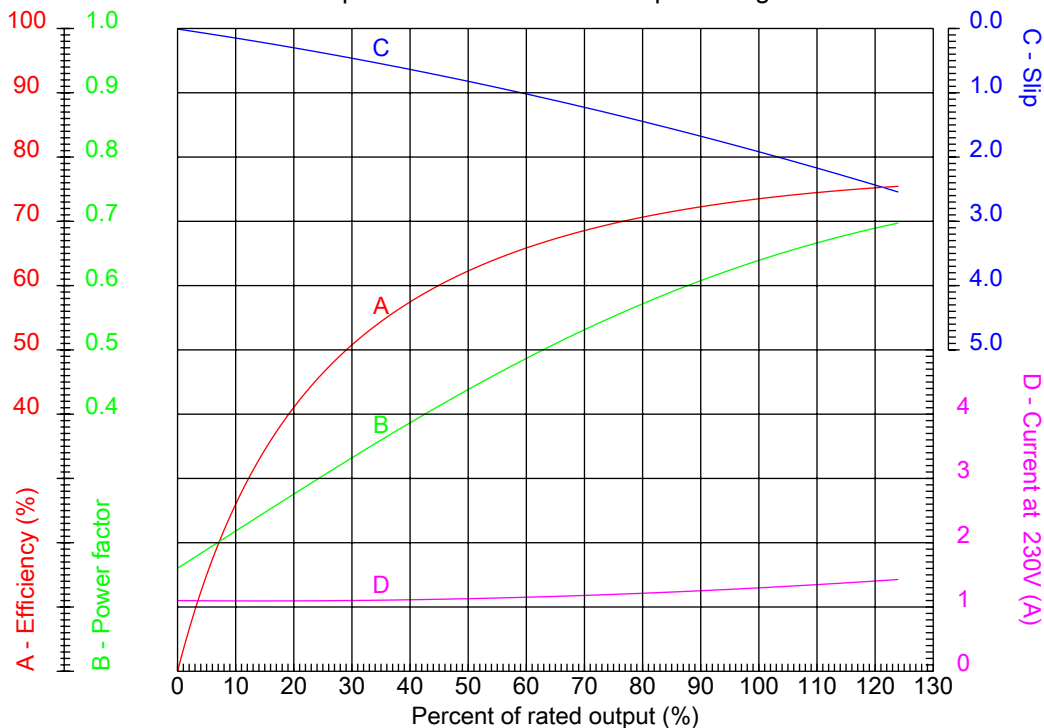


# Dealers Industrial Equipment

No.:

Date: 12-SEP-2016

## PERFORMANCE CURVES RELATED TO RATED OUTPUT Three-phase induction motor - Squirrel cage rotor



Customer :  
Product line : Three Phase: W01 (Rolled Steel) - ODP - Premium Efficiency (DOE)

|                  |                     |  |         |
|------------------|---------------------|--|---------|
| Frame            | : 56                | Locked rotor current (I <sub>l</sub> /I <sub>n</sub> ) | : 6.2   |
| Output           | : 0.33 HP           | Duty cycle   | : S1    |
| Frequency        | : 60 Hz             | Service factor   | : 1.35  |
| Full load speed  | : 1765 rpm          | Design   | : A     |
| Voltage          | : 208-230/460 V     | Locked rotor torque                                    | : 230 % |
| Rated current    | : 1.48-1.34/0.668 A | Breakdown torque                                       | : 330 % |
| Insulation class | : F                 |  |         |

Notes:  
Downloaded from <http://dealerselectric.com>  
Generated for Model #.3318OT3E56-S

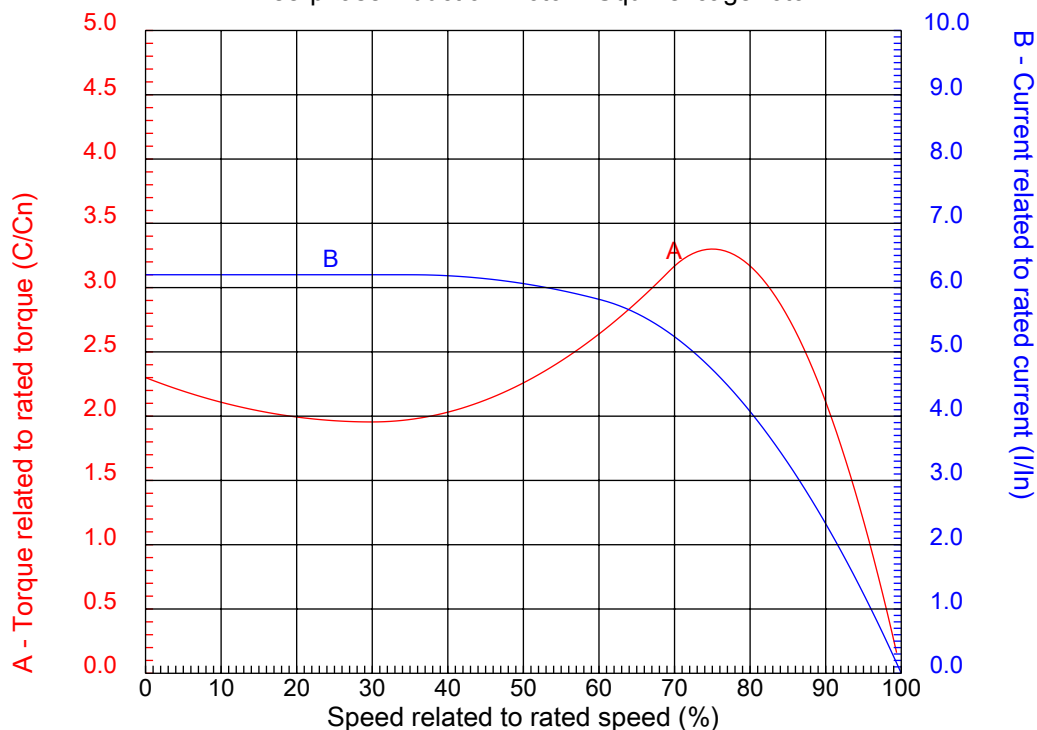
Performed by

Checked



## CHARACTERISTIC CURVES RELATED TO SPEED

Three-phase induction motor - Squirrel cage rotor



Customer :  
Product line : Three Phase: W01 (Rolled Steel) - ODP - Premium Efficiency (DOE)

|                  |                     |  |         |
|------------------|---------------------|--|---------|
| Frame            | : 56                | Locked rotor current (I <sub>l</sub> /I <sub>n</sub> ) | : 6.2   |
| Output           | : 0.33 HP           | Duty cycle   | : S1    |
| Frequency        | : 60 Hz             | Service factor   | : 1.35  |
| Full load speed  | : 1765 rpm          | Design   | : A     |
| Voltage          | : 208-230/460 V     | Locked rotor torque                                    | : 230 % |
| Rated current    | : 1.48-1.34/0.668 A | Breakdown torque                                       | : 330 % |
| Insulation class | : F                 |  |         |

Notes:  
Downloaded from <http://dealerselectric.com>  
Generated for Model #.3318OT3E56-S

Performed by

Checked

1 2 3 4 5 6 7 8

A

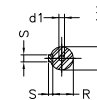
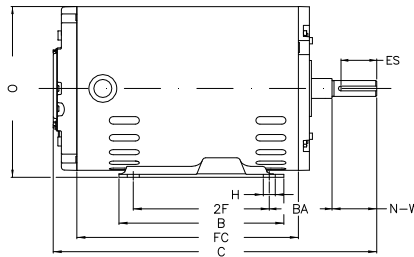
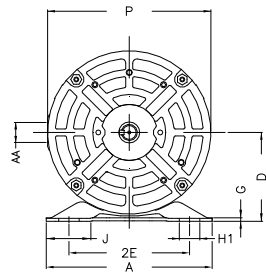
B

C

D

E

F



Notes: Downloaded from <http://dealerselectric.com>  
Generated for Model #.3318OT3E56-S

Performed by:

Checked:

Customer:

Three Phase: W01 (Rolled Steel) - ODP - Premium Efficiency (DOE)

Three-phase induction motor  
Frame 56 - ODP

12-SEP-2016



|       |          |       |        |        |
|-------|----------|-------|--------|--------|
| P     | AB       | J     | 2E     | A      |
| 6.456 | 3.323    | 1.732 | 4.874  | 6.535  |
| H     | G        | HB    | HK     | T      |
| 0.343 | 0.120    | 1.784 | 2.629  | 0.004  |
| O     | FC       | 2F    | B      | C      |
| 6.724 | 6.299    | 3.000 | 4.016  | 10.315 |
| BA    | N-W      | ES    | d1     | S      |
| 2.750 | 1.874    | 1.417 | A 3.15 | 0.187  |
| U     | AA       | depth | R      | LL     |
| 0.625 | NPT 1/2" | 0.187 | 0.517  | 4.563  |
| LM    | BB       | D     |        |        |
| 4.090 | 0.004    | 3.500 |        |        |