



Dealers Industrial Equipment

No.:

Date: 12-SEP-2016

Customer :

TECHNICAL PROPOSAL

Single-phase induction motor - Squirrel cage rotor

Product line : Single-Phase : NEMA 48 & 56 ODP - Resilient Base - Split Phase

Catalog Number : .3318OS1BRBOC56

List Price : \$288

Notes:

Downloaded from <http://dealerselectric.com>

Generated for Model #.3318OS1BRBOC56

Performed by:

Checked:



Dealers Industrial Equipment

No.:

Date: 12-SEP-2016

DATA SHEET Single-phase induction motor - Squirrel cage rotor

Customer :
 Product line : Single-Phase : NEMA 48 & 56 ODP - Resilient Base - Split Phase

Frame : C56
 Output : 0.33 HP
 Frequency : 60 Hz
 Poles : 4
 Full load speed : 1735 rpm
 Slip : 3.61 %
 Voltage : 115/208-230 V
 Rated current : 6.25/3.10-3.13 A
 Locked rotor current : 40.0/20.0 A
 Locked rotor current (I_L/I_n) : 6.4
 No-load current : 5.16/2.58 A
 Full load torque : 0.985 lb.ft
 Locked rotor torque : 190 %
 Breakdown torque : 260 %
 Design : ---
 Insulation class : B
 Temperature rise : 80 K
 Locked rotor time : 6 s (hot)
 Service factor : 1.35 (1.00 at 208V)
 Duty cycle : S1
 Ambient temperature : -20°C - +40°C
 Altitude : 1000 m
 Degree of Protection : IP21
 Approximate weight : 23 lb
 Moment of inertia : 0.04010 sq.ft.lb
 Noise level : ---

	D.E.	N.D.E.	Load	Power factor	Efficiency (%)
Bearings	6203 ZZ	6202 ZZ	100%	0.57	60.0
Regreasing interval	---	---	75%	0.50	55.0
Grease amount	---	---	50%	0.41	48.0

Notes:
 Downloaded from <http://dealerselectric.com>
 Generated for Model #.3318OS1BRBOC56

Performed by

Checked



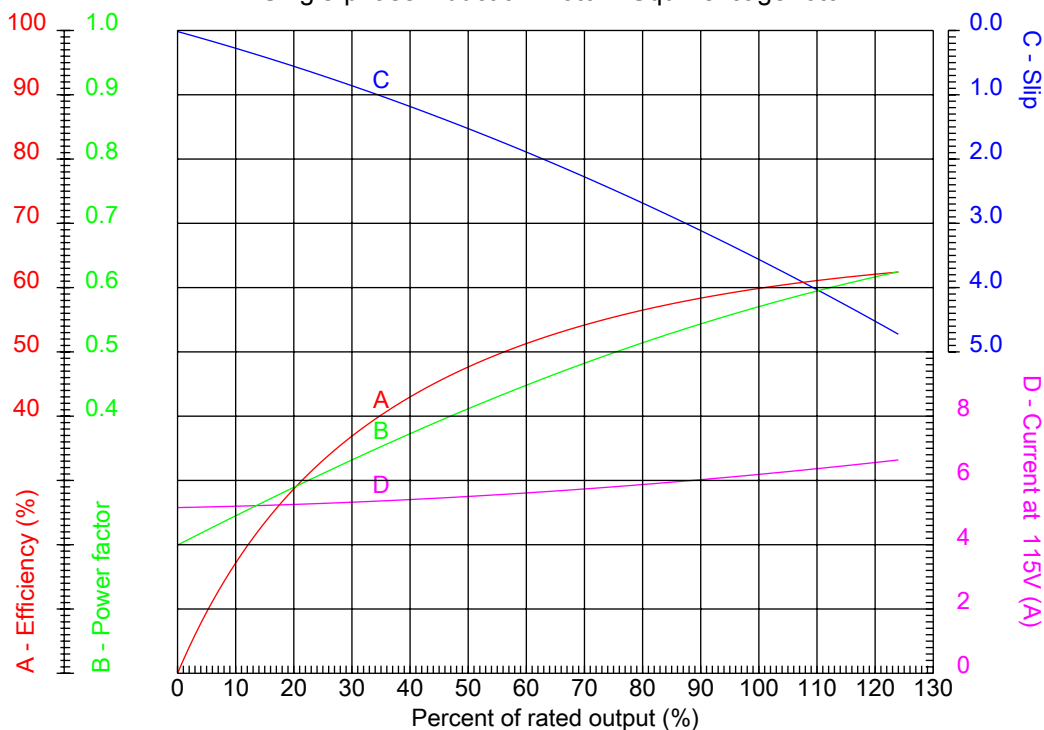
Dealers Industrial Equipment

No.:

Date: 12-SEP-2016

PERFORMANCE CURVES RELATED TO RATED OUTPUT

Single-phase induction motor - Squirrel cage rotor



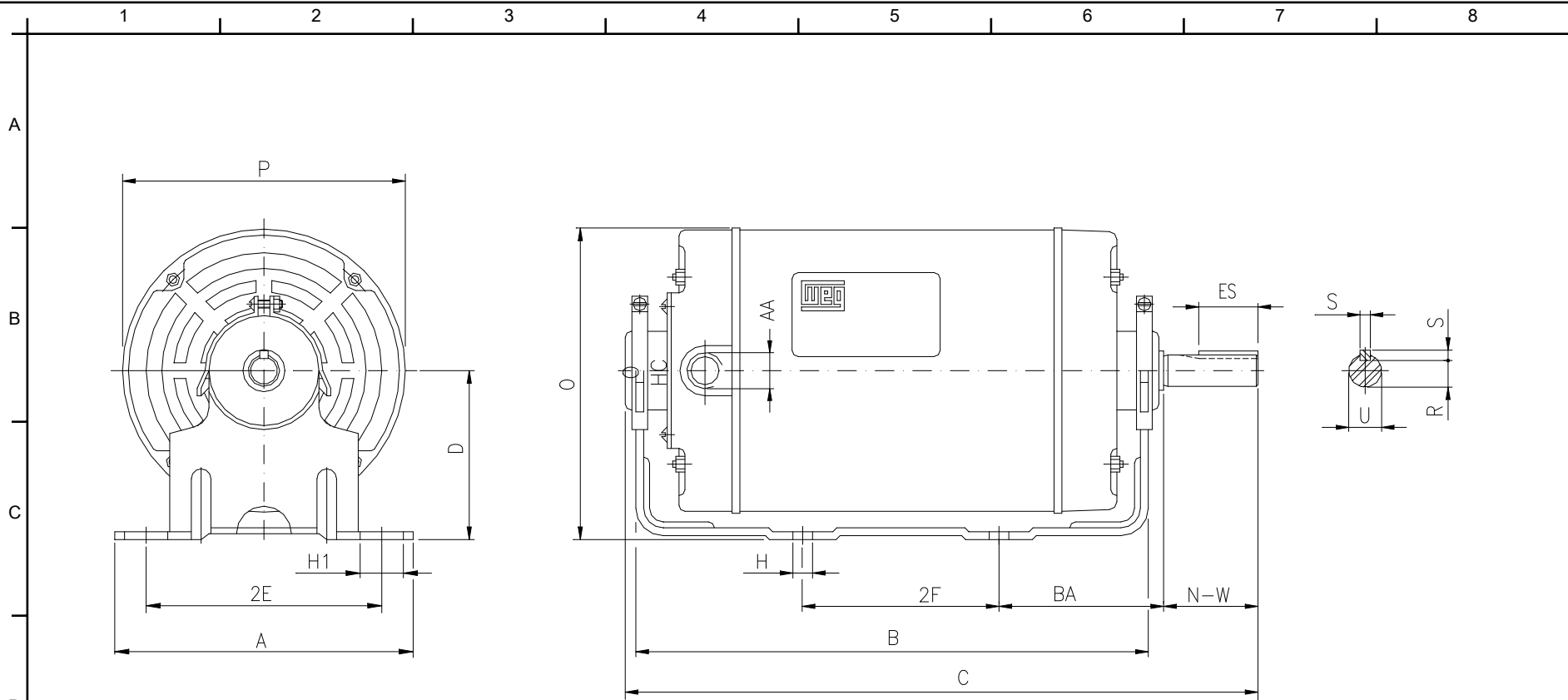
Customer :
Product line : Single-Phase : NEMA 48 & 56 ODP - Resilient Base - Split Phase

Frame : C56	Locked rotor current (I _L /I _n) : 6.4
Output : 0.33 HP	Duty cycle : S1
Frequency : 60 Hz	Service factor : 1.35 (1.00 at 208V)
Full load speed : 1735 rpm	Design : ---
Voltage : 115/208-230 V	Locked rotor torque : 190 %
Rated current : 6.25/3.10-3.13 A	Breakdown torque : 260 %
Insulation class : B	

Notes:
Downloaded from <http://dealerselectric.com>
Generated for Model #.3318OS1BRBOC56

Performed by

Checked



Notes: Downloaded from <http://dealerselectric.com>
 Generated for Model #.3318OS1BRBOC56

Performed by:

Checked:

Customer:

Single-Phase : NEMA 48 & 56 ODP - Resilient Base - Split Phase

2E	2F	H	BA	A
4.874	3.000	0.342	2.750	6.535
B	D	J	O	P
4.016	3.500	1.220	6.378	5.709
ES	S	N-W	U	R
1.102	0.187	1.874	0.625	0.517
AA				
NPT 1/2"				

Single-phase induction motor
 Frame C56 - IP21

12-SEP-2016

