



Dealers Industrial Equipment

No.:

Date: 12-SEP-2016

Customer :

TECHNICAL PROPOSAL

Single-phase induction motor - Squirrel cage rotor

Product line : Single-Phase : NEMA 48 & 56 ODP - Start Capacitor

Catalog Number : .3318OS1BC56C

List Price : \$258

Notes:

Downloaded from <http://dealerselectric.com>

Generated for Model #.3318OS1BC56C

Performed by:

Checked:



Dealers Industrial Equipment

No.:

Date: 12-SEP-2016

DATA SHEET Single-phase induction motor - Squirrel cage rotor

Customer :
Product line : Single-Phase : NEMA 48 & 56 ODP - Start Capacitor

Frame : C56
Output : 0.33 HP
Frequency : 60 Hz
Poles : 4
Full load speed : 1745 rpm
Slip : 3.06 %
Voltage : 115/208-230 V
Rated current : 6.60/3.10-3.30 A
Locked rotor current : 34.3/17.2 A
Locked rotor current (I_L/I_n) : 5.2
No-load current : 5.60/2.80 A
Full load torque : 0.980 lb.ft
Locked rotor torque : 350 %
Breakdown torque : 280 %
Design : ---
Insulation class : B
Temperature rise : 80 K
Locked rotor time : 6 s (hot)
Service factor : 1.35 (1.00 at 208V)
Duty cycle : S1
Ambient temperature : -20°C - +40°C
Altitude : 1000 m
Degree of Protection : IP21
Approximate weight : 22 lb
Moment of inertia : 0.04010 sq.ft.lb
Noise level : ---

	D.E.	N.D.E.
Bearings	6203 ZZ	6202 ZZ
Regreasing interval	---	---
Grease amount	---	---

Load	Power factor	Efficiency (%)
100%	0.55	58.2
75%	0.47	53.5
50%	0.39	45.5

Notes:
Downloaded from <http://dealerselectric.com>
Generated for Model #.3318OS1BC56C

Performed by

Checked



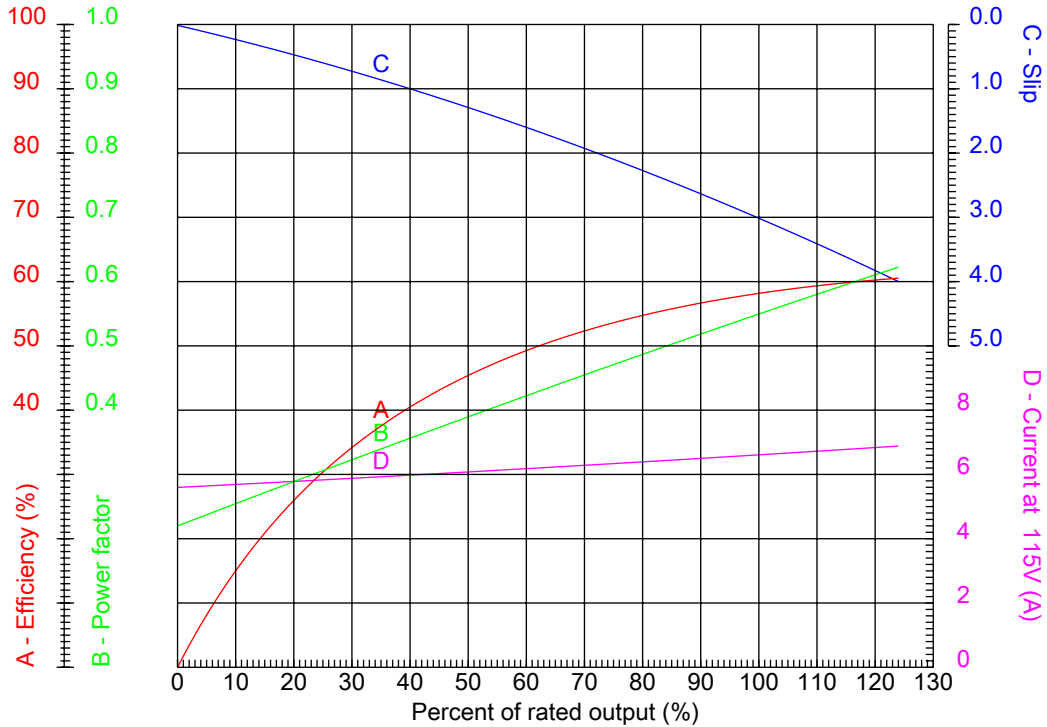
Dealers Industrial Equipment

No.:

Date: 12-SEP-2016

PERFORMANCE CURVES RELATED TO RATED OUTPUT

Single-phase induction motor - Squirrel cage rotor



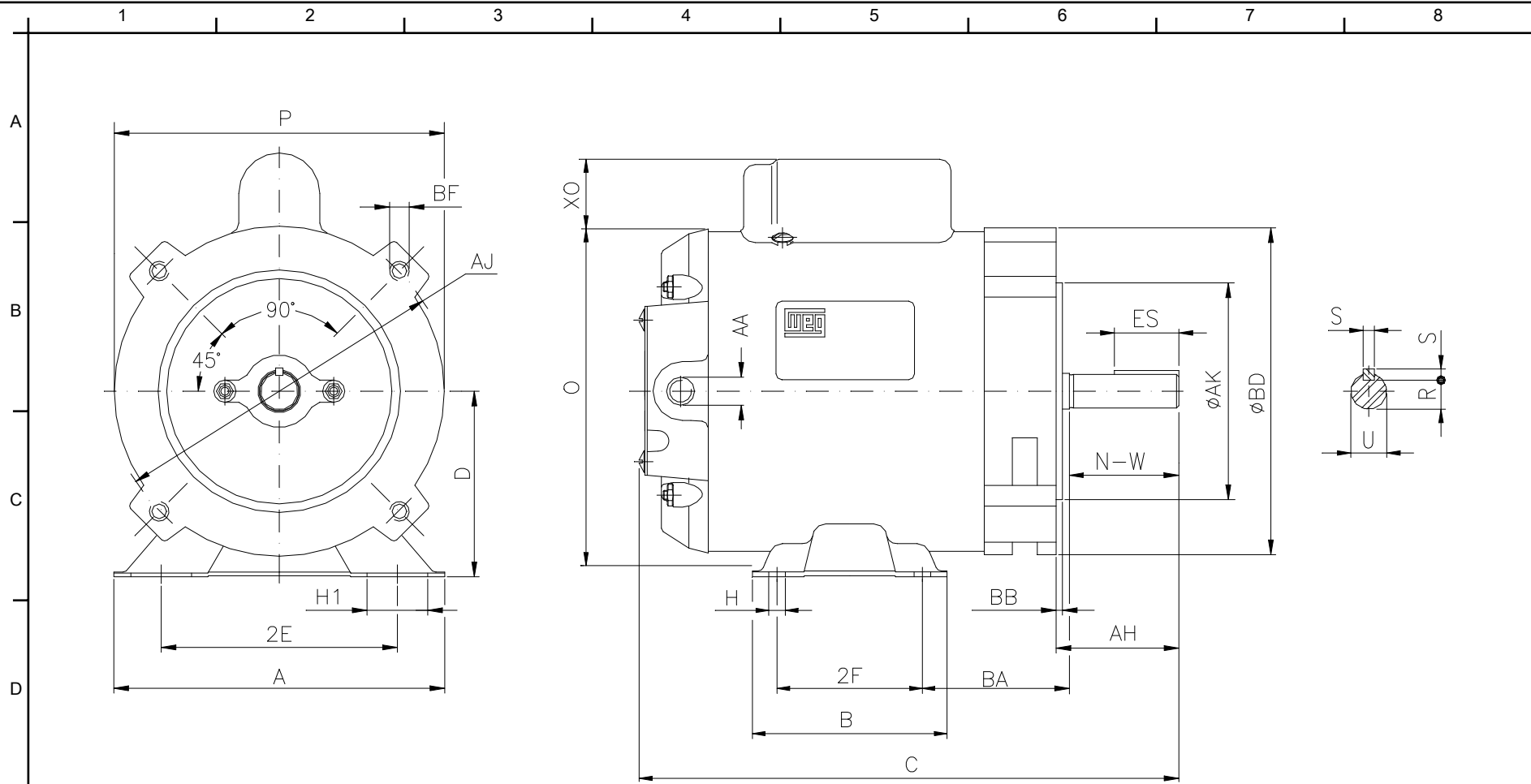
Customer :
 Product line : Single-Phase : NEMA 48 & 56 ODP - Start Capacitor

Frame	: C56	Locked rotor current (I _l /I _n)	: 5.2
Output	: 0.33 HP	Duty cycle	: S1
Frequency	: 60 Hz	Service factor	: 1.35 (1.00 at 208V)
Full load speed	: 1745 rpm	Design	: ---
Voltage	: 115/208-230 V	Locked rotor torque	: 350 %
Rated current	: 6.60/3.10-3.30 A	Breakdown torque	: 280 %
Insulation class	: B		

Notes:
 Downloaded from <http://dealerselectric.com>
 Generated for Model #.3318OS1BC56C

Performed by

Checked



Notes: Downloaded from <http://dealerselectric.com>
 Generated for Model #.3318OS1BC56C

Performed by:

Checked:

Customer:

Single-Phase : NEMA 48 & 56 ODP - Start Capacitor

Single-phase induction motor
 Frame C56 - IP21

12-SEP-2016



2E 4.874	2F 3.000	H 0.342	H1 31	BA 2.750
A 6.535	B 4.016	C 10.551	D 3.500	O 6.378
XO 0.000	P 5.709	ES 1.102	S 0.187	N-W 1.874
U 0.6250	R 0.517	AA NPT 1/2"	AH 2.063	Flange FC-149
AJ 5.874	AK 4.500	BD 5.748	BF UNC 3/8"x16-2B	BB 0.157