



Dealers Industrial Equipment

No.:

Date: 12-SEP-2016

Customer :

TECHNICAL PROPOSAL

Single-phase induction motor - Squirrel cage rotor

Product line : Single-Phase : NEMA 48 & 56 ODP - Start Capacitor

Catalog Number : .2536OS1BB48

List Price : \$220

Notes:

Downloaded from <http://dealerselectric.com>

Generated for Model #.2536OS1BB48

Performed by:

Checked:



Dealers Industrial Equipment

No.:

Date: 12-SEP-2016

DATA SHEET Single-phase induction motor - Squirrel cage rotor

Customer :
Product line : Single-Phase : NEMA 48 & 56 ODP - Start Capacitor

Frame : B48
Output : 0.25 HP
Frequency : 60 Hz
Poles : 2
Full load speed : 3440 rpm
Slip : 4.44 %
Voltage : 115/208-230 V
Rated current : 4.30/2.10-2.15 A
Locked rotor current : 21.9/11.0 A
Locked rotor current (I_L/I_n) : 5.1
No-load current : 3.10/1.55 A
Full load torque : 0.377 lb.ft
Locked rotor torque : 350 %
Breakdown torque : 280 %
Design : ---
Insulation class : B
Temperature rise : 80 K
Locked rotor time : 6 s (hot)
Service factor : 1.35 (1.00 at 208V)
Duty cycle : S1
Ambient temperature : -20°C - +40°C
Altitude : 1000 m
Degree of Protection : IP21
Approximate weight : 18 lb
Moment of inertia : 0.01495 sq.ft.lb
Noise level : ---

	D.E.	N.D.E.
Bearings	6203 ZZ	6202 ZZ
Regreasing interval	---	---
Grease amount	---	---

Load	Power factor	Efficiency (%)
100%	0.68	54.7
75%	0.64	50.5
50%	0.56	42.0

Notes:
Downloaded from <http://dealerselectric.com>
Generated for Model #.2536OS1BB48

Performed by

Checked



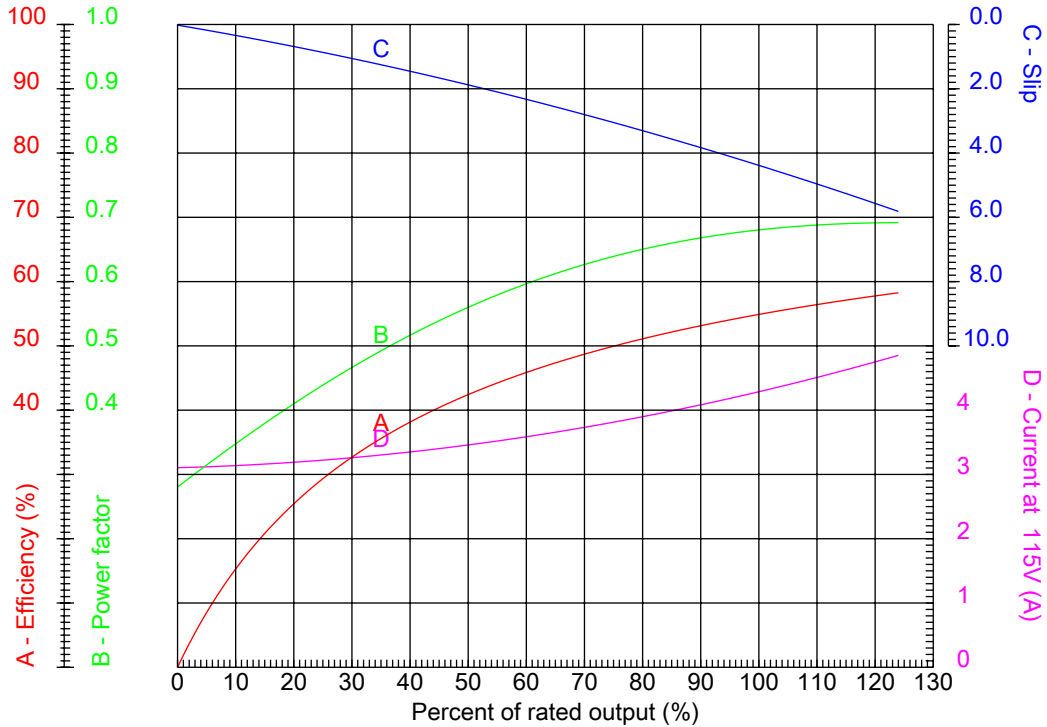
Dealers Industrial Equipment

No.:

Date: 12-SEP-2016

PERFORMANCE CURVES RELATED TO RATED OUTPUT

Single-phase induction motor - Squirrel cage rotor



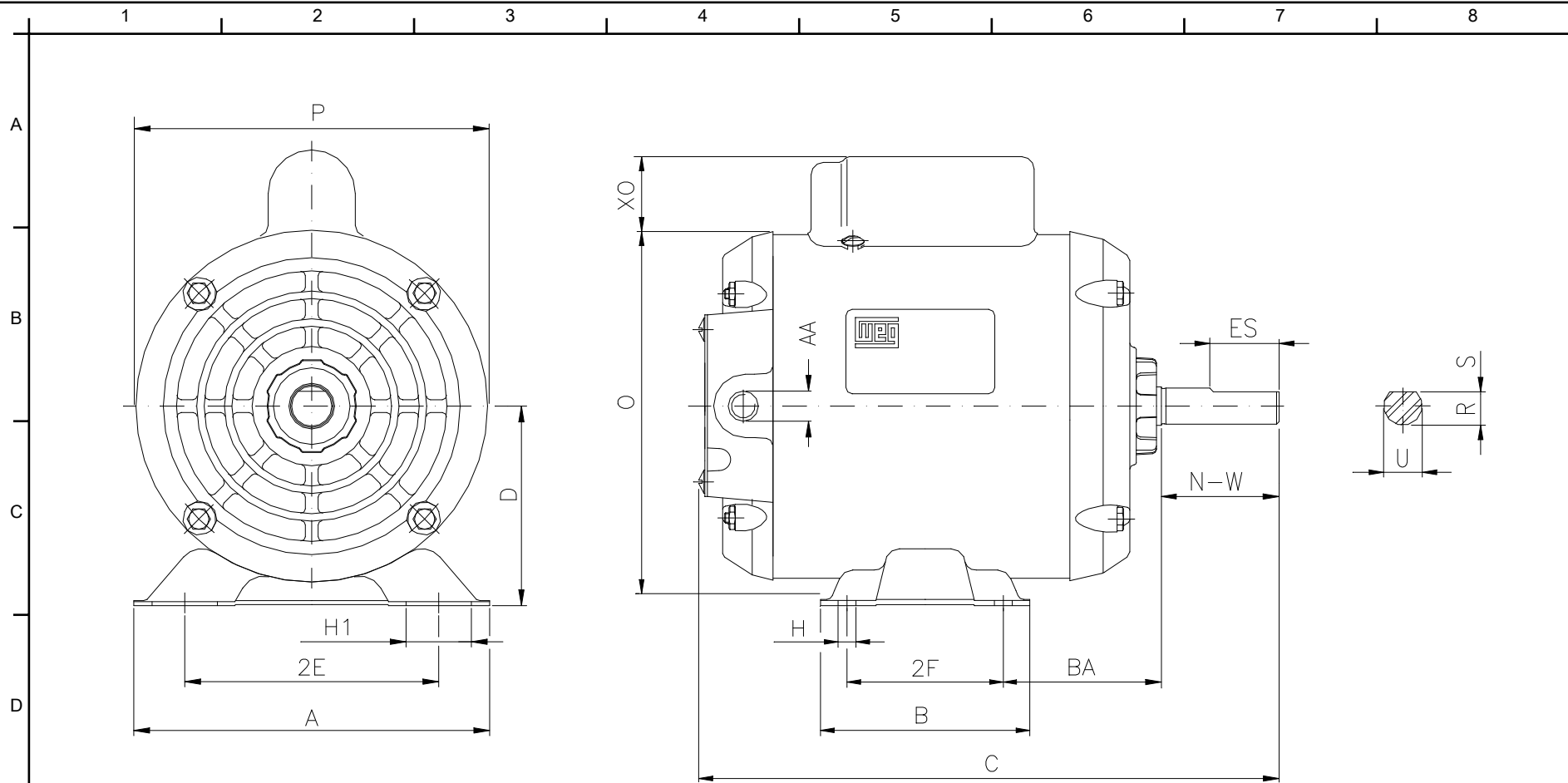
Customer :
 Product line : Single-Phase : NEMA 48 & 56 ODP - Start Capacitor

Frame	: B48	Locked rotor current (I _L /I _n)	: 5.1
Output	: 0.25 HP	Duty cycle	: S1
Frequency	: 60 Hz	Service factor	: 1.35 (1.00 at 208V)
Full load speed	: 3440 rpm	Design	: ---
Voltage	: 115/208-230 V	Locked rotor torque	: 350 %
Rated current	: 4.30/2.10-2.15 A	Breakdown torque	: 280 %
Insulation class	: B		

Notes:
 Downloaded from <http://dealerselectric.com>
 Generated for Model #.2536OS1BB48

Performed by

Checked



Notes: Downloaded from <http://dealerselectric.com>
 Generated for Model #.2536OS1BB48

Performed by:

Checked:

Customer:

Single-Phase : NEMA 48 & 56 ODP - Start Capacitor

2E 4.236	2F 2.748	H 0.342	H1 31	BA 2.500
A 6.142	B 3.543	C 9.409	D 3.000	O 5.905
XO 0.000	P 5.708	ES 1.260	N-W 1.500	U 0.5000
R 0.453	AA NPT 1/2"	AH 1.689		

Single-phase induction motor
 Frame B48 - IP21

12-SEP-2016

