



Dealers Industrial Equipment

No.:

Date: 12-SEP-2016

Customer :

TECHNICAL PROPOSAL

Three-phase induction motor - Squirrel cage rotor

Product line : Three Phase: W01 (Rolled Steel) - ODP - Premium Efficiency (DOE)

Catalog Number : .2518OT3E56CFL-S

List Price : \$263

Notes:

Downloaded from <http://dealerselectric.com>

Generated for Model #.2518OT3E56CFL-S

Performed by:

Checked:



Dealers Industrial Equipment

No.:

Date: 12-SEP-2016

DATA SHEET Three-phase induction motor - Squirrel cage rotor

Customer :
 Product line : Three Phase: W01 (Rolled Steel) - ODP - Premium Efficiency (DOE)

Frame : 56
 Output : 0.25 HP
 Frequency : 60 Hz
 Poles : 4
 Full load speed : 1765 rpm
 Slip : 1.94 %
 Voltage : 208-230/460 V
 Rated current : 1.18-1.07/0.533 A
 Locked rotor current : 6.29/3.14 A
 Locked rotor current (I_L/I_n) : 5.9
 No-load current : 1.00/0.500 A
 Full load torque : 0.734 lb.ft
 Locked rotor torque : 230 %
 Breakdown torque : 330 %
 Design : A
 Insulation class : F
 Temperature rise : 80 K
 Locked rotor time : 38 s (hot)
 Service factor : 1.35
 Duty cycle : S1
 Ambient temperature : -20°C - +40°C
 Altitude : 1000 m
 Degree of Protection : ODP
 Approximate weight : 16 lb
 Moment of inertia : 0.03892 sq.ft.lb
 Noise level : 52 dB(A)

	D.E.	N.D.E.
Bearings	6203 ZZ	6202 ZZ
Regreasing interval	---	---
Grease amount	---	---

Load	Power factor	Efficiency (%)
100%	0.61	69.5
75%	0.52	64.0
50%	0.41	57.5

Notes:
 Downloaded from <http://dealerselectric.com>
 Generated for Model #.2518OT3E56CFL-S

Performed by

Checked



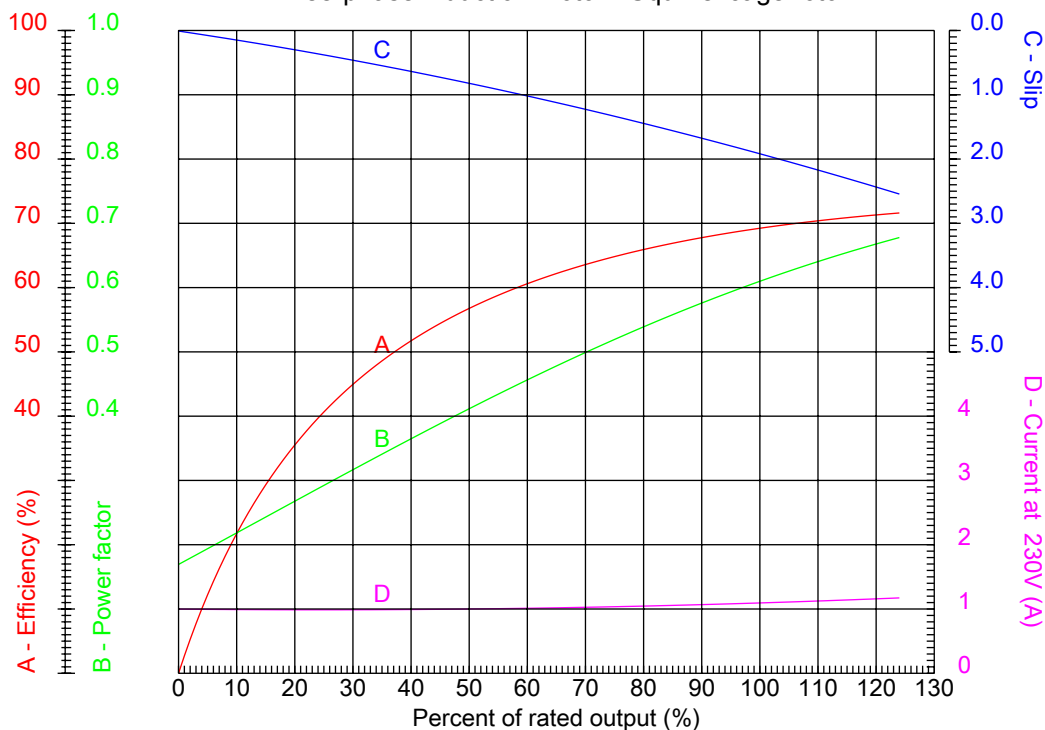
Dealers Industrial Equipment

No.:

Date: 12-SEP-2016

PERFORMANCE CURVES RELATED TO RATED OUTPUT

Three-phase induction motor - Squirrel cage rotor



Customer :
 Product line : Three Phase: W01 (Rolled Steel) - ODP - Premium Efficiency (DOE)

Frame	: 56	Locked rotor current (I _l /I _n)	: 5.9
Output	: 0.25 HP	Duty cycle	: S1
Frequency	: 60 Hz	Service factor	: 1.35
Full load speed	: 1765 rpm	Design	: A
Voltage	: 208-230/460 V	Locked rotor torque	: 230 %
Rated current	: 1.18-1.07/0.533 A	Breakdown torque	: 330 %
Insulation class	: F		

Notes:
 Downloaded from <http://dealerselectric.com>
 Generated for Model #.2518OT3E56CFL-S

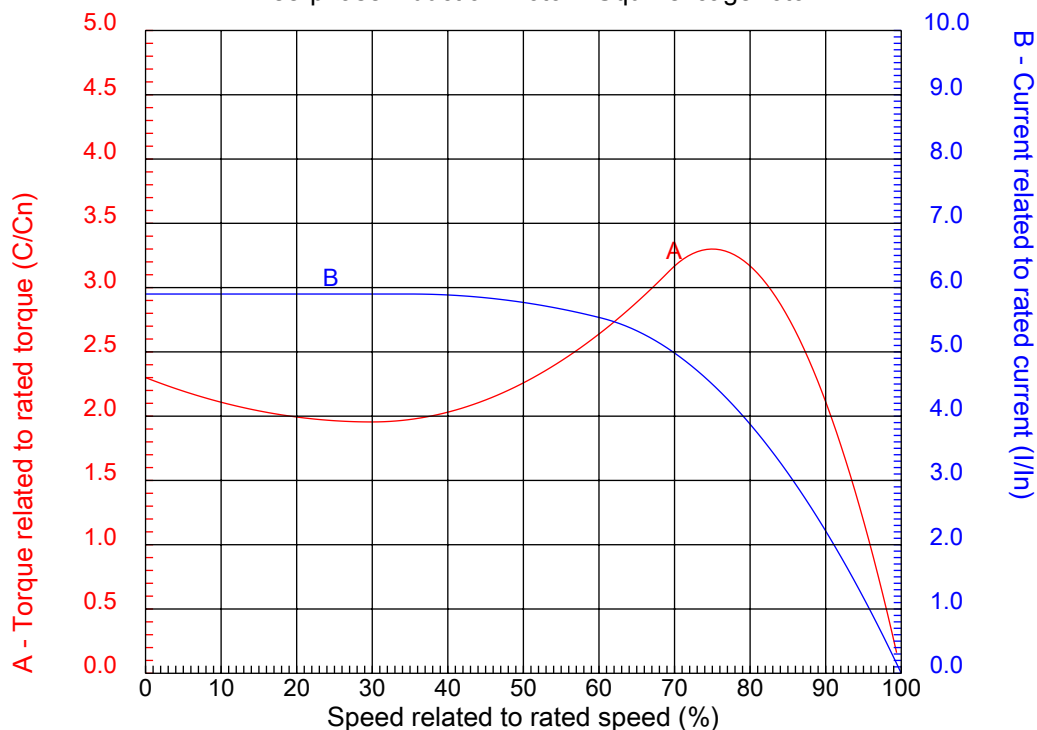
Performed by

Checked



CHARACTERISTIC CURVES RELATED TO SPEED

Three-phase induction motor - Squirrel cage rotor



Customer :
Product line : Three Phase: W01 (Rolled Steel) - ODP - Premium Efficiency (DOE)

Frame	: 56	Locked rotor current (I _l /I _n)	: 5.9
Output	: 0.25 HP	Duty cycle	: S1
Frequency	: 60 Hz	Service factor	: 1.35
Full load speed	: 1765 rpm	Design	: A
Voltage	: 208-230/460 V	Locked rotor torque	: 230 %
Rated current	: 1.18-1.07/0.533 A	Breakdown torque	: 330 %
Insulation class	: F		

Notes:
Downloaded from <http://dealerselectric.com>
Generated for Model #.2518OT3E56CFL-S

Performed by

Checked

1 2 3 4 5 6 7 8

A

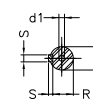
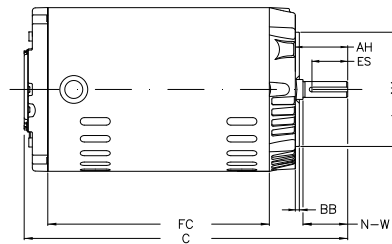
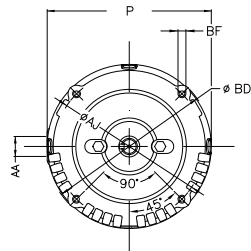
B

C

D

E

F



Notes: Downloaded from <http://dealerselectric.com>
Generated for Model #.2518OT3E56CFL-S

Performed by:

Checked:

Customer:

Three Phase: W01 (Rolled Steel) - ODP - Premium Efficiency (DOE)

Three-phase induction motor
Frame 56 - ODP

12-SEP-2016



P 6.456	AB 3.323	HK 2.629	FC 5.906	C 9.921
N-W 1.874	ES 1.417	d1 A 3.15	S 0.187	U 0.625
AA NPT 1/2"	depth 0.187	R 0.517	LL 4.563	LM 4.090
Flange FC-149	AJ 5.874	AK 4.500	BD 6.450	BF UNC 3/8"x16-2B
BB 0.157	AH 2.062			