



# Dealers Industrial Equipment

No.:

Date: 12-SEP-2016

Customer :

## TECHNICAL PROPOSAL

### Single-phase induction motor - Squirrel cage rotor

Product line : Single-Phase : NEMA 48 & 56 ODP - Start Capacitor

Catalog Number : .1636OS1BB48C

List Price : \$237

#### Notes:

Downloaded from <http://dealerselectric.com>

Generated for Model #.1636OS1BB48C

Performed by:

Checked:



Dealers Industrial Equipment

No.:

Date: 12-SEP-2016

## DATA SHEET

### Single-phase induction motor - Squirrel cage rotor

Customer :  
Product line : Single-Phase : NEMA 48 & 56 ODP - Start Capacitor

Frame : B48  
Output : 0.16 HP  
Frequency : 60 Hz  
Poles : 2  
Full load speed : 3440 rpm  
Slip : 4.44 %  
Voltage : 115/208-230 V  
Rated current : 3.10/1.50-1.55 A  
Locked rotor current : 15.5/7.75 A  
Locked rotor current (I<sub>L</sub>/I<sub>n</sub>) : 5.0  
No-load current : 2.30/1.15 A  
Full load torque : 0.241 lb.ft  
Locked rotor torque : 360 %  
Breakdown torque : 300 %  
Design : ---  
Insulation class : B  
Temperature rise : 80 K  
Locked rotor time : 6 s (hot)  
Service factor : 1.35 (1.00 at 208V)  
Duty cycle : S1  
Ambient temperature : -20°C - +40°C  
Altitude : 1000 m  
Degree of Protection : IP21  
Approximate weight : 17 lb  
Moment of inertia : 0.01281 sq.ft.lb  
Noise level : ---

	D.E.	N.D.E.	Load	Power factor	Efficiency (%)
Bearings	6203 ZZ	6202 ZZ	100%	0.69	49.9
Regreasing interval	---	---	75%	0.60	43.0
Grease amount	---	---	50%	0.55	37.0

Notes:

Downloaded from <http://dealerselectric.com>  
Generated for Model #.1636OS1BB48C

Performed by

Checked



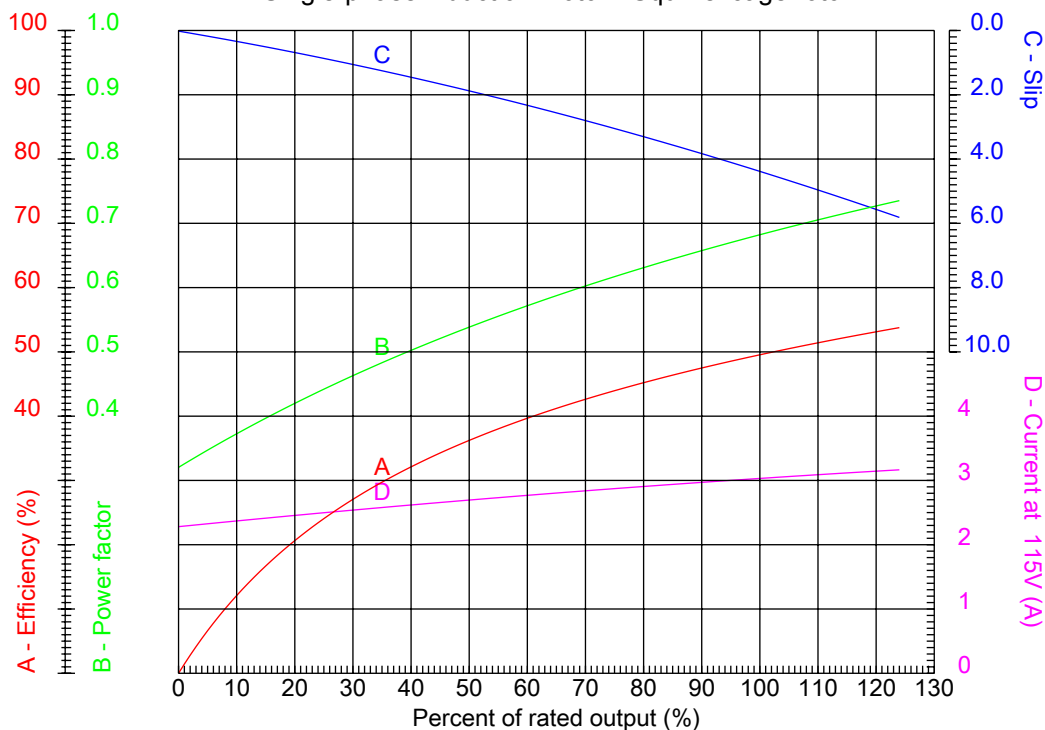
# Dealers Industrial Equipment

No.:

Date: 12-SEP-2016

## PERFORMANCE CURVES RELATED TO RATED OUTPUT

Single-phase induction motor - Squirrel cage rotor



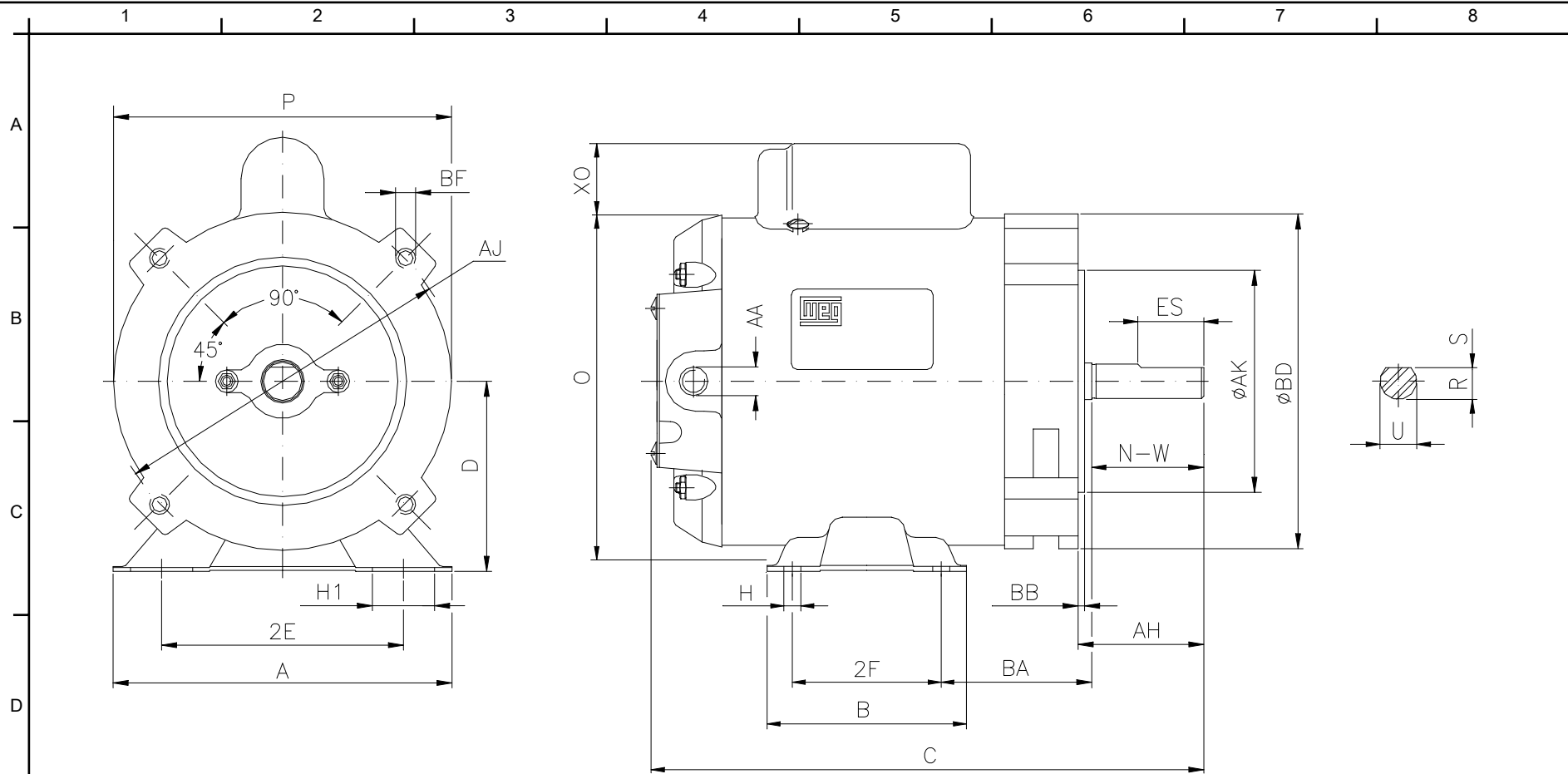
Customer :  
 Product line : Single-Phase : NEMA 48 & 56 ODP - Start Capacitor

Frame	: B48	Locked rotor current (I <sub>L</sub> /I <sub>n</sub> )	: 5.0
Output	: 0.16 HP	Duty cycle	: S1
Frequency	: 60 Hz	Service factor	: 1.35 (1.00 at 208V)
Full load speed	: 3440 rpm	Design	: ---
Voltage	: 115/208-230 V	Locked rotor torque	: 360 %
Rated current	: 3.10/1.50-1.55 A	Breakdown torque	: 300 %
Insulation class	: B		

Notes:  
 Downloaded from <http://dealerselectric.com>  
 Generated for Model #.1636OS1BB48C

Performed by

Checked



Notes: Downloaded from <http://dealerselectric.com>  
 Generated for Model #.1636OS1BB48C

Performed by:

Checked:

Customer:

Single-Phase : NEMA 48 & 56 ODP - Start Capacitor

Single-phase induction motor  
 Frame B48 - IP21

12-SEP-2016



2E 4.236	2F 2.748	H 0.342	H1 31	BA 2.500
A 6.142	B 3.543	C 9.409	D 3.000	O 5.905
XO 0.000	P 5.708	ES 1.260	N-W 1.500	U 0.5000
R 0.453	AA NPT 1/2"	AH 1.689	Flange FC-149	AJ 5.874
AK 4.500	BD 5.748	BF UNC 3/8"x16-2B	BB 0.157	