

1 2 3 4 5 6 7 8

A

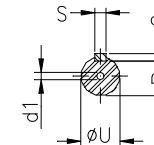
B

C

D

E

F



Notes: Downloaded from <http://dealerselectric.com>  
Generated for Model #12509XP3G504

Performed by:

Checked:

Customer:

Three-Phase : Explosion Proof - High Efficiency

Three-phase induction motor  
Frame 504T - IP54

28-SEP-2016



2E 20.000	A 24.724	2F 16.000/18.000	B 21.969	BA 8.500
J 4.724	K 5.984	P 24.212	ES 8.661	depth 0.875
S 0.875	N-W 10.630	U 3.625	R 3.134	AB 21.850
D 12.500	G 2.146	O 25.197	H 1.250	C 49.445
AA 2xNPT 3"	d1 DUNC 3/4"-10	d2 DUNC 3/4"-10	T 3.543	