

1 2 3 4 5 6 7 8

A

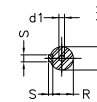
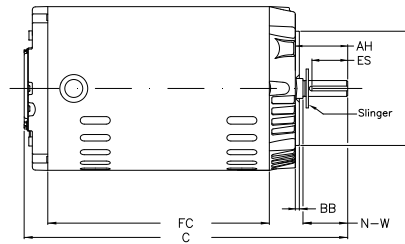
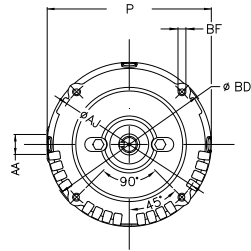
B

C

D

E

F



Notes: Downloaded from <http://dealerselectric.com>  
Generated for Model #00236OS3EJPR56C-S

Performed by:

Checked:

Customer:

Jet Pump: Three-Phase - W01 (Rolled Steel) - Keyed - ODP - Standard Efficiency

P	AB	AA	U	ES
6.456	5.882	NPT 1/2"	0.625	1.417
C	FC	Flange	AJ	AK
11.496	7.480	FC-149	5.874	4.500
BD	BF	BB	AH	
6.450	UNC 3/8"x16-2B	0.157	2.062	

Three-phase induction motor  
Frame 56HC - ODP

12-SEP-2016

