

1 2 3 4 5 6 7 8

A

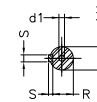
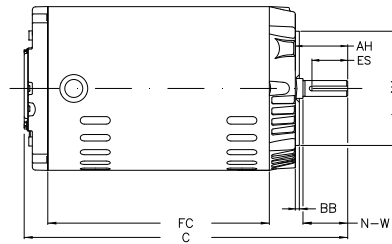
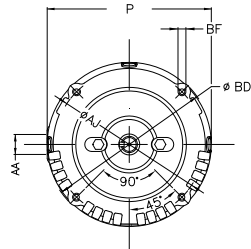
B

C

D

E

F



Notes: Downloaded from <http://dealerselectric.com>
Generated for Model #.7518OS3E56CFL-S

Performed by:

Checked:

Customer:

Three Phase: W01 (Rolled Steel) - ODP - Standard Efficiency

Three-phase induction motor
Frame 56 - ODP

12-SEP-2016



P 6.456	AB 3.323	HK 2.629	FC 6.693	C 10.709
N-W 1.874	ES 1.417	d1 A 3.15	S 0.187	U 0.625
AA NPT 1/2"	depth 0.187	R 0.517	LL 4.563	LM 4.090
Flange FC-149	AJ 5.874	AK 4.500	BD 6.450	BF UNC 3/8"x16-2B
BB 0.157	AH 2.062			