

1 2 3 4 5 6 7 8

A

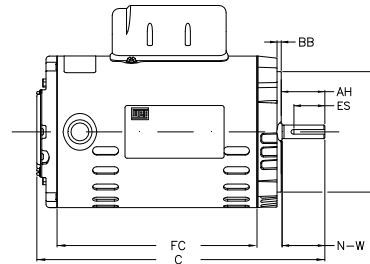
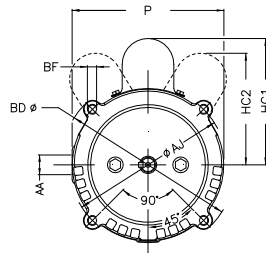
B

C

D

E

F



Notes: Downloaded from <http://dealerselectric.com>
Generated for Model #.5018OT1BW56CFL-S

Performed by:

Checked:

Customer:

Single Phase: W01 (Rolled Steel) - ODP - Premium Efficiency (DOE)

Single-phase induction motor
Frame W56 - ODP

12-SEP-2016



| | | | | |
|----------------------|------------------|--------------|-------------|-------------|
| P 5.709 | AB 5.520 | HK 2.650 | FC 7.087 | C 10.654 |
| N-W 1.874 | ES 1.417 | d1 A 3.15 | S 0.187 | U 0.625 |
| AA NPT 1/2" | depth 0.187 | R 0.517 | LL 3.835 | LM 3.697 |
| HC2 4.165 | Flange FC-149 | AJ 5.874 | AK 4.500 | BD 6.470 |
| BF UNC 3/8"x16-2B | BB 0.157 | AH 2.063 | | |