

1 2 3 4 5 6 7 8

A

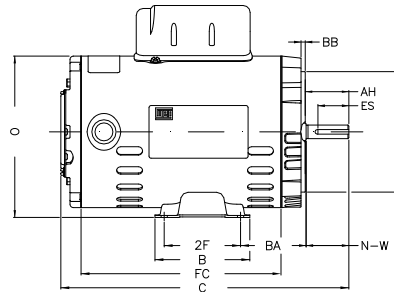
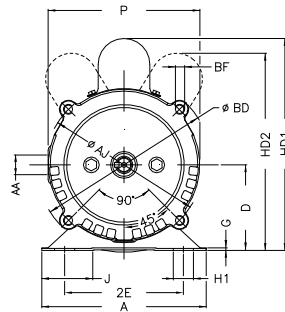
B

C

D

E

F



Notes: Downloaded from <http://dealerselectric.com>
Generated for Model #.3336OT1BW56C-S

P	AB	J	2E	A
5.709	5.520	1.620	4.874	6.535
H	G	HB	HK	FC
0.343	0.075	2.055	2.650	6.693
2F	B	C	BA	N-W
3.000	4.016	10.260	2.750	1.874
ES	d1	S	U	AA
1.417	A 3.15	0.187	0.625	NPT 1/2"
depth	R	LL	LM	D
0.187	0.517	3.835	3.697	3.500
XO	HD2	O	HC2	Flange
0.524	7.677	6.330	4.165	FC-149
AJ	AK	BD	BF	BB
5.874	4.500	6.470	UNC 3/8"x16-2B	0.157
AH				
2.063				

Performed by:

Checked:

Customer:

Single Phase: W01 (Rolled Steel) - ODP - Premium Efficiency (DOE)

Single-phase induction motor
Frame W56 - ODP

12-SEP-2016

