

1 2 3 4 5 6 7 8

A

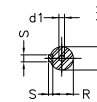
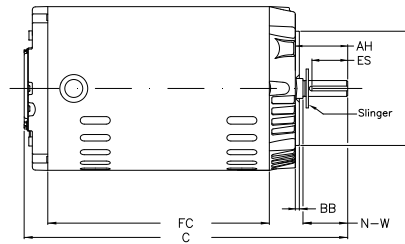
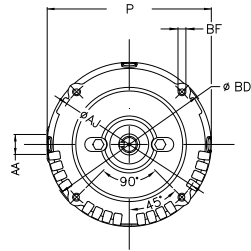
B

C

D

E

F



Notes: Downloaded from <http://dealerselectric.com>
Generated for Model #.3336OS3EJPR56C-S

Performed by:

Checked:

Customer:

Jet Pump: Three-Phase - W01 (Rolled Steel) - Keyed - ODP - Standard Efficiency

P 6.456	AB 5.882	AA NPT 1/2"	U 0.625	ES 1.417
C 10.315	FC 6.299	Flange FC-149	AJ 5.874	AK 4.500
BD 6.450	BF UNC 3/8"x16-2B	BB 0.157	AH 2.062	

Three-phase induction motor
Frame 56C - ODP

12-SEP-2016

